



Acquisition of the Advanced, High-Grade Omeo Gold Project

May 2026



ASX:RKB

www.rokebyresources.com.au

Cautionary Statement

Important Notice and Disclaimer



This presentation should be considered in its entirety. If you do not understand the material contained in this presentation, you should consult your professional advisors. The sole purpose of this presentation is to provide shareholders with an update on current activities of the Company.

Any statements which may be considered forward-looking statements relate only to the date of this presentation document. Such forward-looking statements involve known and unknown risks, uncertainties and other important factors beyond the Company's control that could cause actual results, performance or achievements of the Company to be materially different from future results, performance, or achievements expressed or implied by such forward-looking statements. As a result of these factors, the events described in the forward-looking statements in this document may not occur.

Notwithstanding the material in this presentation, shareholders should consider that any investment in the Company is highly speculative and should consult their professional advisers – whether scientific, business, financial or legal – before deciding whether to make any investment in the Company.

The Company may at its absolute discretion, but without being under any obligation to do so, update, amend or supplement this presentation or any other information to the recipient. No person has been authorised to give any information or make any representation other than contained in this document and if given or made, such information or representation must not be relied on as having been so authorised.

Competent Person Statement

The information in this ASX announcement that relates to Historical Resource Estimates is an accurate representation of the available data and studies for the Omeo Project in Victoria. It is based on information compiled by Mr Mathew Perrot who is a Member of The Australian Institute of Geoscientists, MAIG, RPGeo. He has sufficient experience, which is relevant to the exploration activities, style of mineralisation and types of deposits under consideration, and to the activity which has been undertaken, to qualify as a Competent Person as defined in the 2012 Edition of the "Australasian Code for Reporting of Exploration Results, Mineral Resources and Ore Reserves". Mr. Perrot is a fulltime employee of Rokeby Resources Limited and consents to the announcement being issued in the form and context in which it appears.

The information in this report that relates to previously reported Exploration Results is extracted from ASX announcements as set out in Schedule 1 to this announcement and separately referenced in the body of this announcement.

The announcements referred to in Schedule 1 were prepared and first disclosed under the JORC Code (2004) and have not been updated to JORC (2012) and, therefore, should not be relied upon as compliant with the current JORC (2012) code.

The Company confirms that:

- It is not aware of any new information or data that materially affects the information included in the original announcements; and
- All material assumptions and technical parameters underpinning the estimates continue to apply and have not materially changed.

The Company confirms that the form and context in which the Competent Person's findings are presented have not been materially modified.

Highlights

Rokeby to acquire the high-grade and advanced Omeo Gold Project in Victoria

- The Omeo Gold Project is a high-grade, scalable exploration and development asset, underpinned by a **Historical Estimate of 2.4 Mt at 4.02 g/t Au for 320,000 ounces of gold¹**
- Following a period of due diligence and site visits, the Rokeby Board believes **Omeo provides the Company with a unique and exciting gold asset, underpinned by compelling exploration upside, resource growth and multi-value creation options**
- **Rokeby is committed to investing in the drill bit and completing aggressive exploration across Omeo** to significantly grow the size and scale of the current Historical Mineral Resource Estimate
- Historical drilling has intersected several high-grade holes, **including 6m @ 18.9g/t, 11m @ 13.3g/t, 15.9m @ 52.3g/t, 14.5m @ 10.1g/t and 3.1m @ 39.5g/t²**
- **Mineralisation has yet to be closed off along the 5.8 km mineralised zone with the Sunnyside deposit a high-priority target**
- Proposed leadership changes with **Richard Beazley** to become **Managing Director** and **Tim Pallas Non-Executive Chairman**. Tim is one of Victoria's most experienced and respected politicians, having served in Victorian Parliament for ~20 years

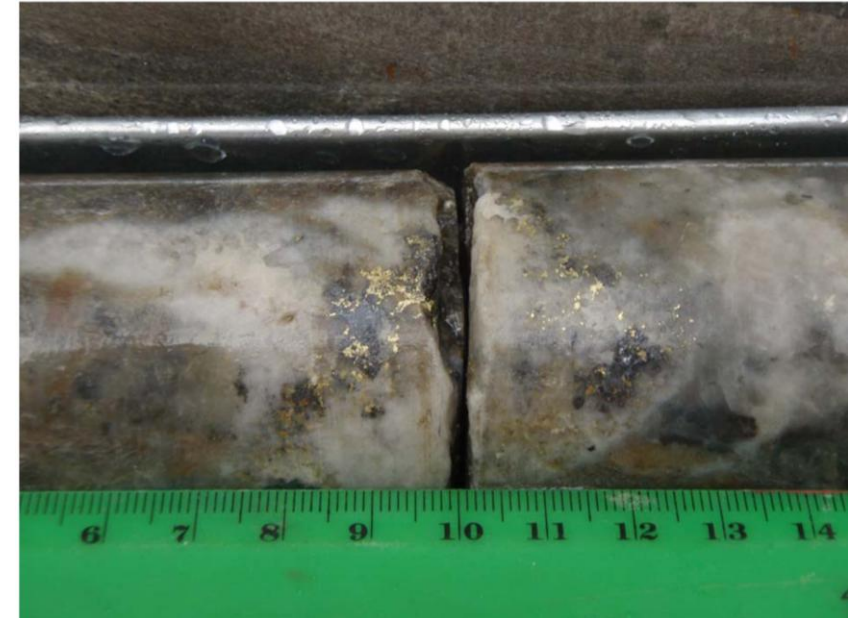


Figure 1: Drill hole SSDH045; interval 199.05-199.14 (down hole depth) reported visible gold

1. Refer RKB ASX Announcement 24 April 2026
2. Refer Schedule 1, items 1, 5, 7, 10 & 12

Omeo Gold Project Summary

Low cost, high-grade, scalable gold project in Eastern Victoria



Substantial resource growth and high-grade exploration upside

- Historical Estimate of 2.4Mt at 4.02 g/t Au for 320,000 ounces of gold at Mt Wills¹
- Major underground development opportunity at the Glen Wills deposits
- **Historical resource and successful exploration work provide a strong platform to rapidly expand the Omeo Project**



A Platform for Immediate Exploration Work and Growth

- Committed to ongoing exploration, with an aggressive 12-month work program
- Unique position to leverage historical workings that require minimal work to be accessible – No 5 adit at Maude open and accessible for 900m



Local community opportunity

- Omeo provides access to suitable local skilled labour, providing a cost-effective workforce with limited fly-in, fly-out (FIFO) required
- Rokeby is committed to working constructively with stakeholders to support sustainable regional development and long-term economic outcomes for the Omeo community



Strong Government and regional support

- Supportive stakeholders, including the Government, aiding in approvals and permits and an environmental management plan
- Tim Pallas, Non-Executive Chairman of Rokeby Resources, is one of Victoria's most experienced and respected politicians, having served in the Victorian Parliament for ~20 years

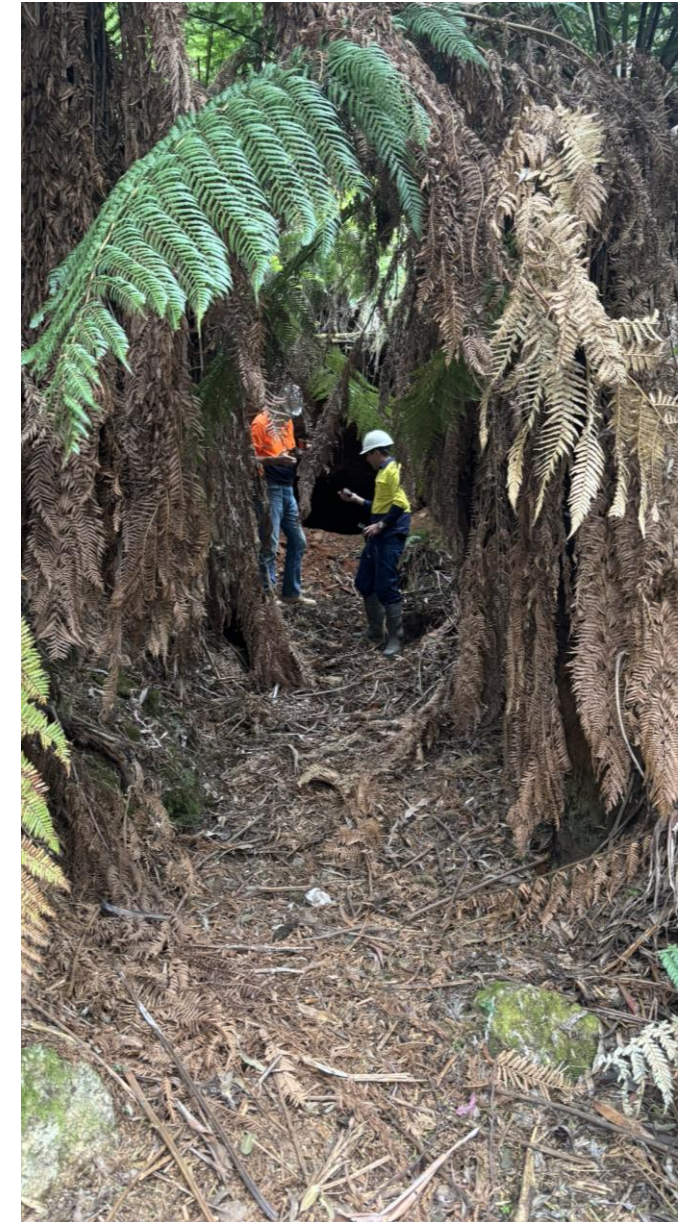


Figure 2: Portal entrance to Adit 4 Maude

1. Refer RKB ASX Announcement 24 April 2026

A Team with Leading Mining and Victoria Experience

Proposed Management and Board



Tim Pallas (Proposed Non-Executive Chairman)

One of Victoria's most experienced and respected politicians, having served in Victorian Parliament for ~20 years. First elected as the member for Tarneit in 2006, Tim was the longest-standing Treasurer in the history of the Victorian government, holding the position from 2014-2024. He also served as the Minister for Resources, Minister for Economic Growth, Minister for Major Projects, Minister for Industrial Relations and Minister for Roads and Ports during his tenure.

Richard Beazley (Proposed Managing Director)

Richard is an experienced mining engineer with 35+ years of experience. He has a strong corporate, operational and technical background. Richard is currently the Director of Altair Mining Consultancy and Non-Exec Chair for Nova Minerals Ltd. Recent past roles include the Exec Director for Troy Resources Ltd, Non-Exec Chair of MetalsGrove Mining Ltd and Non-Exec Director of Catalina Resources Ltd.

Trevor Benson (Executive Director)

Trevor brings significant experience across roles as CEO, Chairman and Director, within the resources and finance sector. Having worked for resource companies, investment banks and finance houses, he has completed many mergers and acquisitions and capital market transactions across a range of natural resources and related industries.

Bradley Marwood (Non-Executive Director)

Brad is an experienced mining and exploration executive with 40+ years' experience, and has held the roles of CEO, Managing Director and Director in several companies, including Middle Island Resources, Yari Minerals, and Tiger Resources. An engineer by training, he has been responsible for over 50 feasibility studies and has secured \$500,000,000 in debt and equity funding for project development.

Andrew Haythorpe (Non-Executive Director)

Andrew has 30+ years of experience in the resources and investment industries - a geologist with CRA, a Mining Analyst with Suncorp, County Natwest and Hartleys and a fund Manager / Analyst with Bankers Trust, which grew to manage over \$40 billion. Andrew was a top 12-rated Gold Analyst and considered a global leader in mineral sands analysis.

Corporate Overview

	Pre-transaction	Post-transaction
Shares on issue (billion)	1.8	3.595
Market capitalisation at \$0.004	\$7.3m	\$14.4m
Cash at bank (Dec 2025)	\$0.8m	\$1.45m
Enterprise Value	\$6.5m	\$12.9m
Board and Management	14%	
Top 10 shareholders	31%	
Top 20 shareholders	44%	

Omeo Project: High-Grade Exploration Upside

Historical Estimate Underpins Future Growth

Strong potential for near-term upgrade through historical results and data

✓ Significant, high-grade gold resource¹

- 320 koz of predominantly inferred gold resources – Strong potential for near-term increase in resources through assessment of historical results and data

	Indicated			Inferred			Total		
	Tonnes (t)	Grade (g/t Au)	Ounces (oz Au)	Tonnes (t)	Grade (g/t Au)	Ounces (oz Au)	Tonnes (t)	Grade (g/t Au)	Ounces (oz Au)
Sunnyside	112,660	8.84	32,000	930,400	3.54	105,850	1,055,100	4.06	137,850
Maude	414,300	5.21	69,390	998,800	3.50	112,270	1,413,100	4.00	181,670
Total	526,960	5.99	101,390	1,929,200	3.52	218,120	2,470,700	4.02	319,520

The estimates set out in the table above are historical estimates and are not reported in accordance with the JORC Code. A competent person has not done sufficient work to classify the historical estimate as mineral resources or ore reserves in accordance with the JORC Code and it is uncertain that following evaluation and/or further exploration work that the historical estimates will be able to be reported as mineral resources or ore reserves in accordance with the JORC Code.

The Company confirms that the supporting information provided in the initial market announcement made on 24 April 2026 continues to apply and has not materially changed.

✓ Impressive resource growth potential

- Cassilis project area currently has no defined Mineral Resource, 155 hard rock mines are recorded on the properties

✓ Exploration and growing Omeo in size and scale is a key focus

- Several advanced and high-priority targets to be tested
- Previously reported exploration results demonstrate the substantial exploration potential. Intercepts are reported as downhole lengths; true widths are not known.

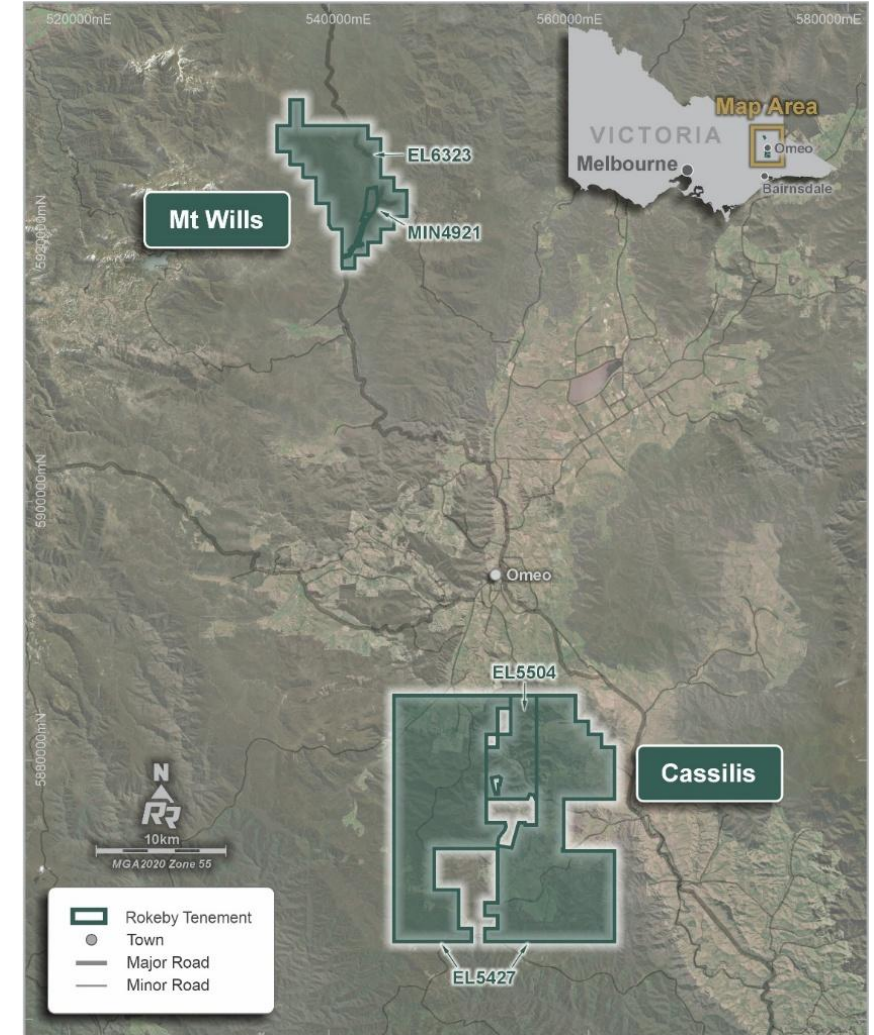


Figure 3: Omeo Gold Project location

1. Refer RKB ASX Announcement 24 April 2026

High-Grade Historical Results

Historical drilling results with outstanding grade and width¹



HOLE	From	To	Length	Au g/t	Ag g/t	Summary	Schedule 1 Reference
Maude Area							
GWDH023	177.1	182.9	5.8	18.9		6m @ 18.9g/t Au	1
GWDH024	220.7	232.6	11.9	8.86		12m @ 8.86/t Au	2
GWDH037	89	94.2	5.2	5.46		5m @ 5.4 g/t Au	3
GWDH038	80.7	83	2.3	31.17		2.3m @ 31.1 g/t Au	13
MSUGDH028	114.2	119.2	5	13.78		5m @ 13.8/t Au	4
MSUGDH046	200.5	211.6	11.1	13.31	8.54	11m @ 13.3 g/t Au 8.54 g/t Ag	5
MSUGDH048 incl	129.65 129.65	136.85 131.2	7.2 1.55	15.11 61.53	60.39 221.42	7.2m @ 15.11 g/t Au 60.39 g/t Ag	6
MSUGDH049 Incl Incl Incl	215.0 216.5 222.85 227	230.7 218.35 225.55 228	15.7 1.85 2.7 1.0	6.69 10.73 21.43 7.56	125.8 16.1 452.33 61.45	15.7m @ 6.7 g/t Au 95.4 g/t Ag	6
Sunnyside Area							
SSDH017 Incl Incl incl	190.2 196.5 196.8 204.8	206.1 196.8 197.2 206.1	15.9 0.3 0.4 1.3	52.36 150.0 900.0 243.4		15.9m @ 52.3 g/t Au	7
SSDH026	152.6	153.4	0.8	208.9		0.8m @ 208.9 g/t Au	8
SSDH038 Incl incl	147.9 147.9 151.1	153.1 148.06 151.7	5.2 0.16 0.6	17.39 406.5 28.71		5.2m @ 17.39g/t Au	9
SSDH040	159	173.5	14.5	10.13		14.5m @ 10.13g/t Au	10
SSDH045 Incl incl	198 198 200.5	201.3 199 201.3	3.3 1.0 0.8	17.63 27.92 33.77		3.3m @ 17.63 g/t Au	16
SSDH052	230.4	233.6	3.5	8.18		3.5m @ 8.37 g/t Au	12
SSDH053 incl	164.5 164.5	167.6 165.7	3.1 1.2	39.56 100.28		3.1m @ 39.56 g/t Au	12

1. Refer RKB ASX Announcement 24 April 2026 and Schedule 1

Historical Background

High-grade and shallow historical gold production

- Extensive gold mining occurred in the Mt Wills - Sunnyside area north of Omeo from the 1890s until after the Second World War
- Peak mining occurred from the 1890s to World War I, with renewed activity during the 1930s–1950s
- Total historical production exceeded 235,000 oz at exceptional average grades of > 18 g/t (*Crohn 1958*)
- Mineralisation was largely extracted from shallow underground workings, typically less than ~100 m depth
- Most prominent operations were the Yellow Girl and Maude mines within the Mt Wills Goldfield, both recognised as historical high-grade producers
- Extensive historic mining and exploration programs generated a substantial geological and production dataset
- Rokeby is well-positioned to leverage this historical information to guide targeting and support the expansion of project scale, grade and resource potential



Figure 4: Existing infrastructure on freehold land at Mt Wills. Note the extensive core library of historical drilling

Mt Wills Resource – Huge Zone of Underexplored Mineralisation

- **Historical Estimate of 2.4Mt at 4.02 g/t Au for 320,000 ounces of gold¹**
- Mt Wills comprises the Maude and Sunnyside deposits
- **5.8 km mineralised zone open along strike in each direction**
- Significant underground exploration growth opportunity
- Multiple high-grade lodes not closed off and will be the initial focus for exploration work

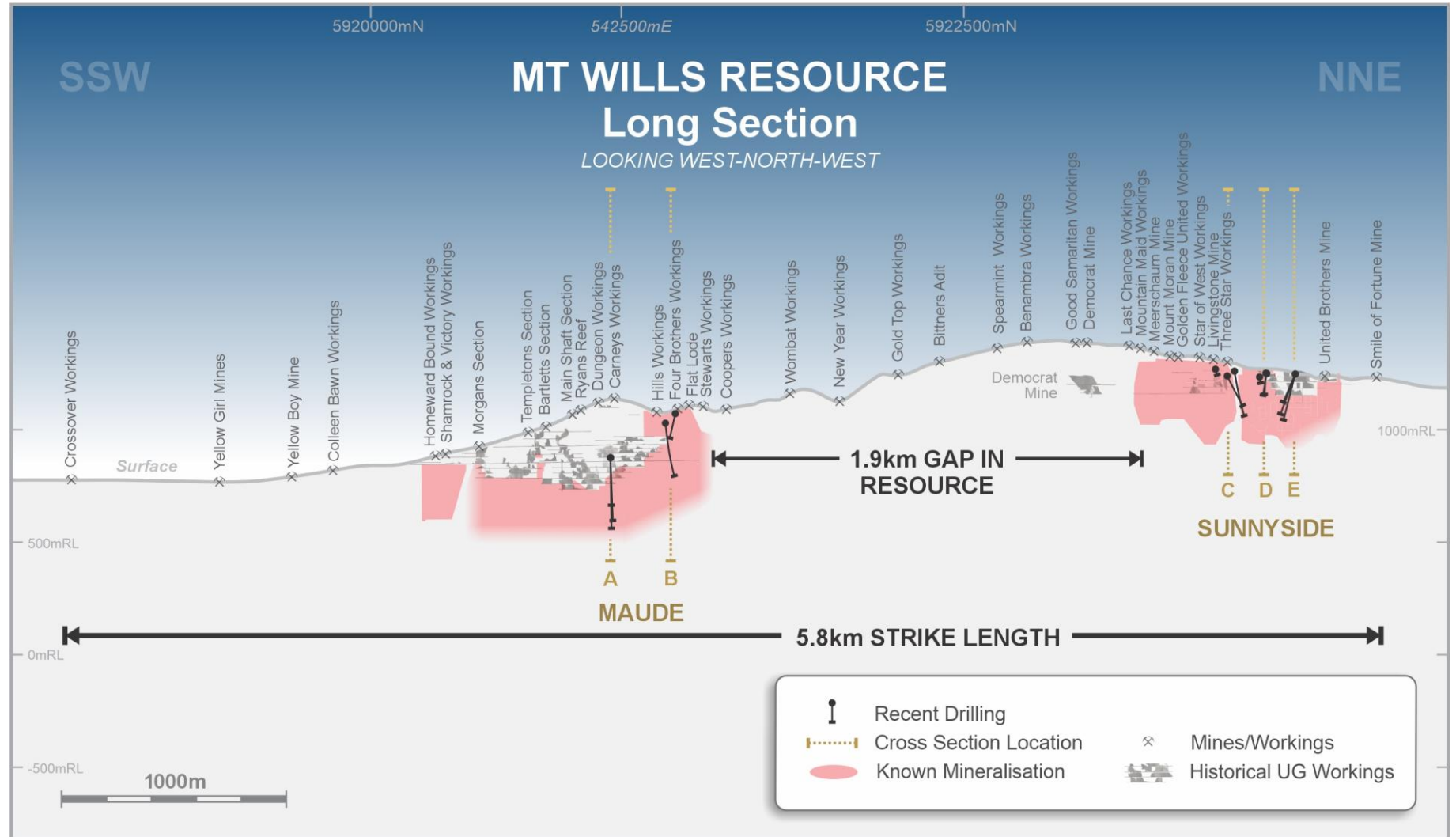
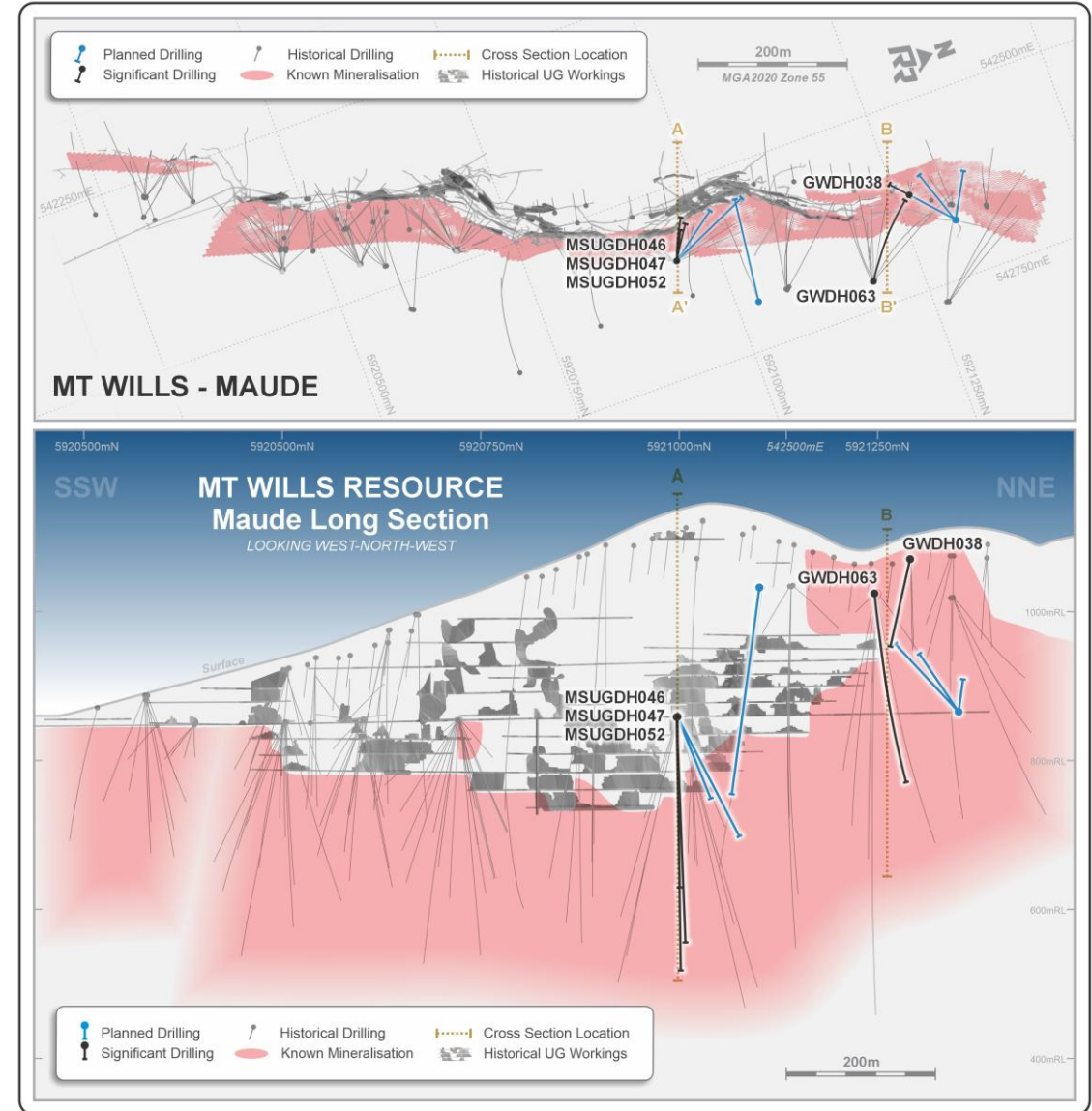


Figure 5: Long section of the Mt Wills Gold deposits with the extent of resource modelling to date. Note the large gap in the middle of the two resource areas and the extensive Democrat mine workings that have yet to be adequately drilled to be able to include in a resource estimate

Mt Wills – Maude Deposit

- **Historical Estimate of 181,670 oz at 4.0 g/t Au with mineralisation open in all directions¹**
- Significant silver not incorporated into resource - opportunity to add value through modelling of silver mineralisation within the existing resource
- No 5 adit open and accessible for 900m to facilitate underground drilling programs - refurbishing the number 5 adit through to 1200m will allow year-round drilling, shorter holes and hence quicker turn around
- Opening up of No 5 adit also allows for collection of bulk sample for metallurgical testing
- Diamond drilling program designed to add confidence to existing modelled high-grade shoots, anticipated to be drilled later in the year once adit refurbished



1. Refer RKB ASX Announcement 24 April 2026

Figure 6: Plan and long section of the Maude deposit at Mt Wills, including planned resource drilling.

Mt Wills – Maude Deposit

- Planning for infill and extensional drilling underway
- Drill program consists of underground and surface drilling
- Program is designed to test two high grade shoots down dip and remnant material in the upper historical mine area
- In the diagram, drilling beneath the Maude workings demonstrates high grades at depth and remains open
- Cross-section B is located 260m north of section A. Section B is located at the Northern end of the Maude mineralisation zone and remains open
- Drilling demonstrates that the high-grade ore zones continue beyond the resource extents and continue toward the Sunnyside resource

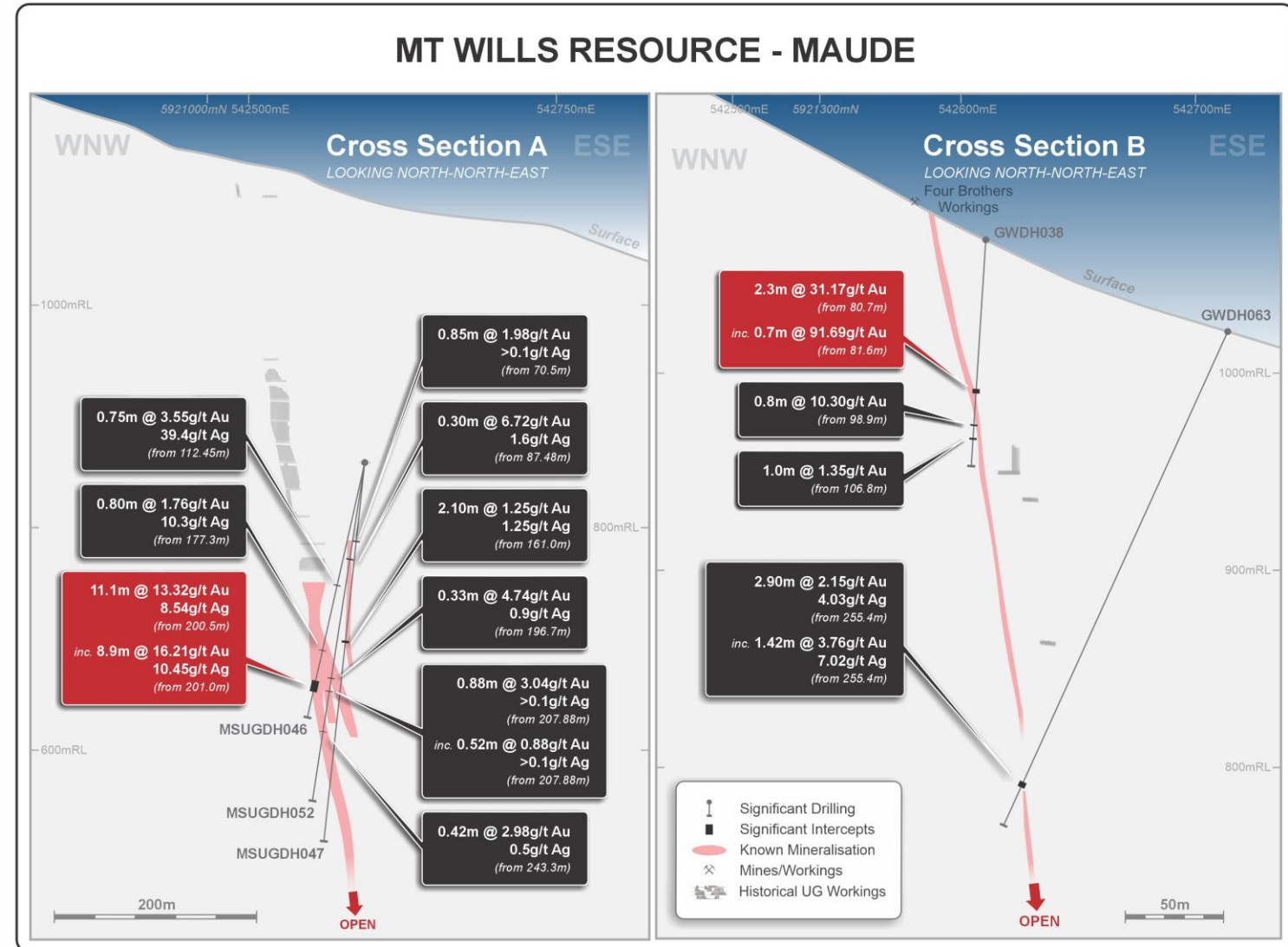
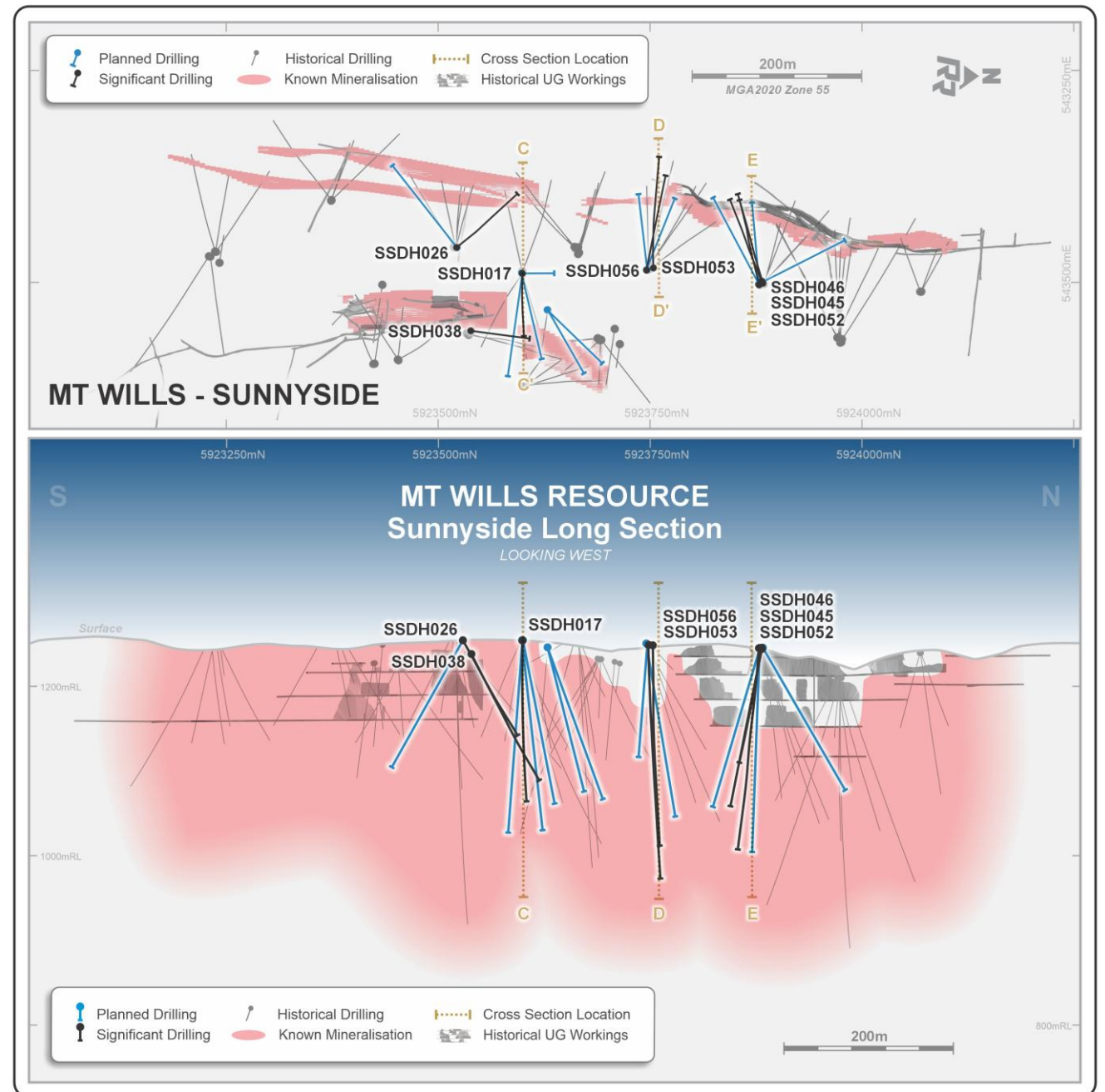


Figure 7: Selected cross sections through the Maude deposit (refer Schedule 1, items 11, 14, 15)

Sunnyside - Drill Ready

- **Historical Estimate of 137,850 oz at 4.06 g/t Au¹**
- Resource defined by two main lodes
- The western lode has only been tested for 930 meters and remains open in all directions
- The eastern lode has only been tested over 320 meters and remains open in all directions. The eastern lode also hosts the best intercept of the project (SSDH017)
- There is considerable upside to exploration – for example the Democrat mine (see Project Long Section) located 220m to the south of the Sunnyside resources has not been drilled



1. Refer RKB ASX Announcement 24 April 2026

Figure 8: Plan and long section of the Sunnyside deposit at Mt Wills, including planned resource drilling. 14

Sunnyside

- The initial drilling program is designed to test high grade mineralisation shoots identified by holes SSDH017, SSDH026, SSDH053 and SSDH045
- The drilling is planned to utilise existing tracks and qualify for a low impact drilling and consequently quick approval from Government

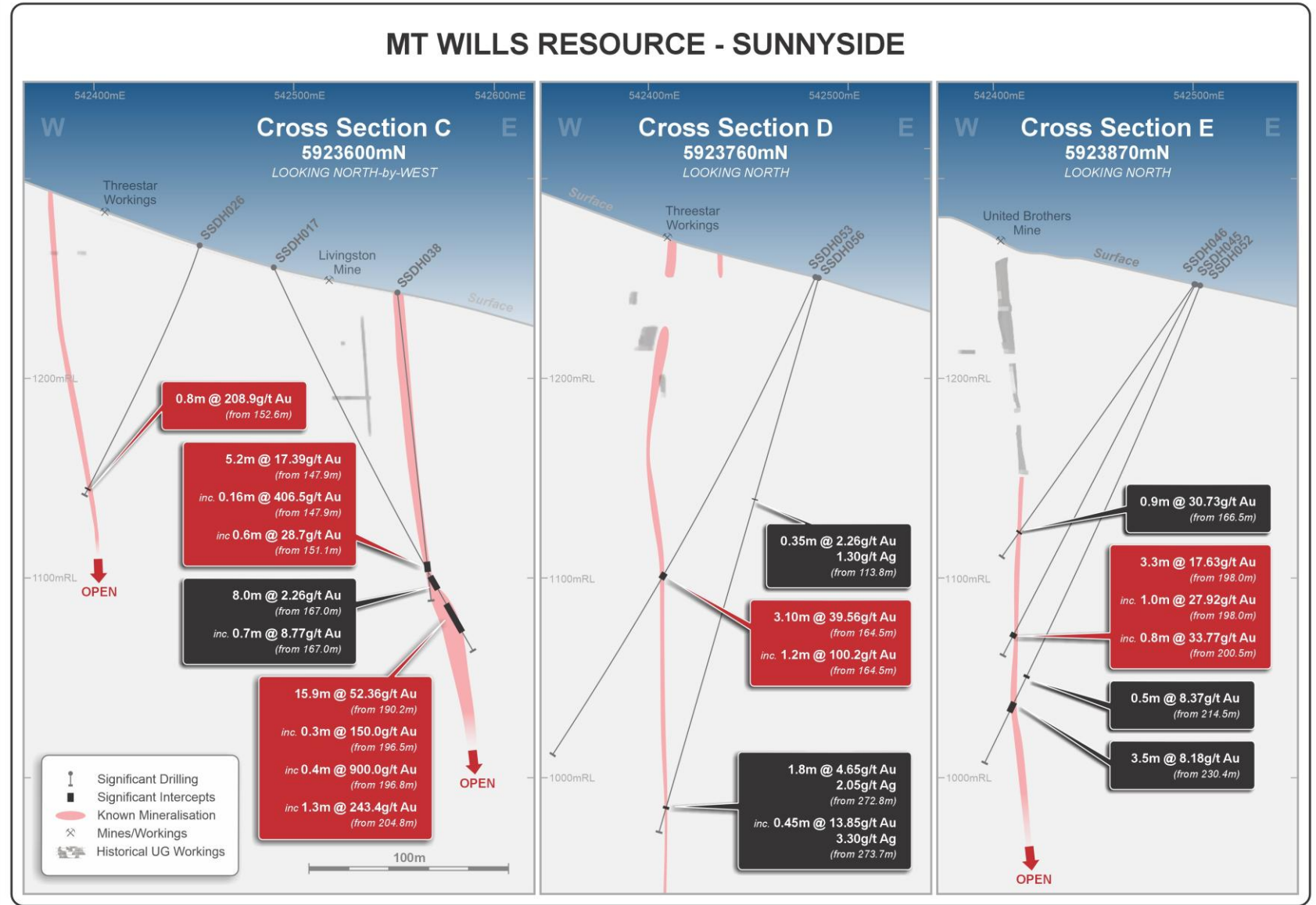


Figure 9: Stacked cross sections of Sunnyside. Note that only one lode was tested in sections D and E. Section D is located 160m North, and section E is located 270m north of section C (refer Schedule 1, items 7, 8, 9, 15 and 16)

Omeo Project: Looking Ahead

Key Exploration and Development Workstreams

Rokeby's current intention is to carry out the following work programs

Activity	Budget	Q4 Apr-Jun	Q1 Jul-Sep	Q2 Oct-Dec	Q3 Jan-Mar
Exploration & infill/extensional resource drilling	\$450,000	→			
Update Historic Resource to JORC (2012) Compliant	\$50,000	→			
Update Resource following drilling campaign	\$50,000		→		
Structural analysis & review geological interpretations	\$50,000	→			
Metallurgical test work	\$40,000			→	
Initial scoping studies on completion of drilling and metallurgical testwork	\$40,000				→
Environmental surveys	\$20,000	→		→	
	\$700,000				

It is important to note that these programs may change depending on results.

Developing Victoria's Next High-Grade Gold Project

Grade and ounces in ground. Scale potential. Near-term growth catalysts



High-grade foundation with a Historical Estimate of 4.2 Mt @ 4.02 g/t Au for 320,000 ounces of gold¹



Mineralisation open across 5.8 km, targeting 500,000 oz to 1 Moz



Proven high grades - wide intercepts up to 15.9m @ 52.3 g/t Au and 11m @ 13.3 g/t Au
- exceptional grades 0.8m @ 238.5 g/t Au and 0.13m @ 588.0 g/t Au²



Development stage, high-grade assets like Omeo are rare in this current gold environment



Strategic addition to management with the appointment of Richard Beazley, and former VIC Resources Minister and Treasurer Tim Pallas

1. Refer RKB ASX Announcement 24 April 2026
2. Refer Schedule 1 – References and past ASX announcements

SCHEDULE 1

References and Past ASX Announcements Referred to in this Presentation



1. GWDH023: refer to ASX announcement Synergy Metals Ltd (ASX: SML) "High grade gold discovered at Glen Wills Gold Project" 15 January 2005, sourced <https://announcements.asx.com.au/asxpdf/20050429/pdf/3qq3qhybw5lqh.pdf>
2. GWDH024: refer to ASX announcement Synergy Metals Ltd (ASX: SML) "Further Substantial High-Grade Gold Intersected at Glen Wills" 10 March 2005, sourced <https://announcements.asx.com.au/asxpdf/20050310/pdf/3q2qjjzwh4t8h.pdf>
3. GWDH037: refer to ASX announcement Synergy Metals Ltd (ASX: SML) "Encouraging Results at Glen Wills Confirm Northern Extension" 23 July 2007, sourced <https://announcements.asx.com.au/asxpdf/20070723/pdf/313kd0dbhds0mm.pdf>
4. MSUGDH028: refer to ASX announcement Synergy Metals Ltd (ASX: SML) "Report for the December 2008 quarter" 30 January 2009, sourced <https://announcements.asx.com.au/asxpdf/20090130/pdf/31fthctwgq2s0f.pdf>
5. MSUGDH046: refer to ASX announcement Synergy Metals Ltd (ASX: SML) "Underground Results Continue to Impress" 17 May 2012, sourced <https://announcements.asx.com.au/asxpdf/20120517/pdf/426b47r40n2w05.pdf>
6. MSUGDH048 and MSUGDH049: refer to ASX announcement Synergy Metals Ltd (ASX: SML) "Further Success from Underground Drill Program" 15 June 2012, sourced <https://announcements.asx.com.au/asxpdf/20120615/pdf/426v7n50c7l04d.pdf>
7. SSDH017: refer to ASX announcement Synergy Metals Ltd (ASX: SML) "Special Announcement – Sunnyside Drilling Results" 21 June 2005, sourced <https://announcements.asx.com.au/asxpdf/20050622/pdf/3r8xxtnj6c74t.pdf>
8. SSDH026: refer to ASX announcement Synergy Metals Ltd (ASX: SML) "More high-grade hits at Sunnyside Gold Project", 4 October 2005, sourced <https://announcements.asx.com.au/asxpdf/20051004/pdf/3sm5lhhsf9vlj.pdf>
9. SSDH038: refer to ASX announcement Synergy Metals (ASX: SML) "High grade mineralised structure confirmed at Sunnyside", 13 December 2007, sourced <https://announcements.asx.com.au/asxpdf/20071213/pdf/316g69z0hh1rhj.pdf>
10. SSDH040: refer to ASX announcement Synergy Metals (ASX: SML) "Sunnyside - high grade intersection confirmed" 14 February 2008, sourced <https://announcements.asx.com.au/asxpdf/20080214/pdf/317fxc9jqb14b0.pdf>
11. SSDH046: refer to ASX announcement Synergy Metals (ASX: SML) "Report for the June 2008 quarter" 31 July 2008, sourced <https://announcements.asx.com.au/asxpdf/20080731/pdf/31bg8xzf78srqp.pdf>
12. SSDH052, 053: refer to ASX announcement Synergy Metals (ASX: SML) "Report for the December 2008 quarter" 30 January 2009, sourced <https://announcements.asx.com.au/asxpdf/20090130/pdf/31fthctwgq2s0f.pdf>
13. GWDH038: refer to ASX announcement Synergy Metals Ltd (ASX: SML) "Encouraging Results at Glen Wills Confirm Northern Extension", 23 July 2007, sourced <https://announcements.asx.com.au/asxpdf/20070723/pdf/313kd0dbhds0mm.pdf>
14. MSUGDH047: refer to ASX announcement Synergy Metals Ltd (ASX: SML) "Further Success from Underground Drill Program", 15th June 2012, sourced <https://announcements.asx.com.au/asxpdf/20120615/pdf/426v7n50c7l04d.pdf>
15. MSUGDH052, 053: refer to ASX announcement Synergy Metals Ltd (ASX: SML) "Glen Wills Goldfield Drilling - Final 2012 drilling programme Assay Results", 3 October 2012, sourced <https://announcements.asx.com.au/asxpdf/20121003/pdf/429440m6dgm8vm.pdf>
16. SSDH045: refer to ASX announcement Synergy Metals (ASX: SML) "Positive assay results received", 27 May 2008, sourced <https://announcements.asx.com.au/asxpdf/20080527/pdf/319b6z1rnpqk24.pdf>

With reference to the table on page 9 and elsewhere:

All intersections are reported as downhole lengths; true widths have not been determined. No lower or upper cut-offs have been applied to these results and results have been released in full.

Note:

The exploration results referenced in the table on page 9 and elsewhere in this presentation and set out in Schedule 1 were originally reported under JORC Code (2004) and have not been updated to comply with JORC Code (2012). They should not be relied upon as JORC (2012) compliant. The Company is not aware of any new information or data that materially affects those results.

ASX:RKB

Rokeby Resources Limited

Thank You



www.rokebyresources.com.au



info@rokebyresources.com.au