



## 175m @ 2.5% Copper from 7.6m, hole ends in 4.46% Copper & open at depth Danvers drilling delivers a globally significant Copper intersection

White Cliff Minerals Limited (“WCN” or the “Company”) (ASX: WCN; OTCQB: WCMLF) is pleased to announce further assay results from the reverse circulation drilling campaign at the Company’s 100% owned Rae Copper Project in Nunavut, Canada.

- Further assay results confirm and validate the strategy to explore previously untested high-grade zones and vertical depth extension of mineralisation at Danvers
- Highlights from **DAN25008**:
  - **175m @ 2.5% Cu** & 8.66g/t silver (Ag) from 7.6m, including **14m @ 7.55% Cu & 25.8g/t Ag** from 138m
  - **the last 60m of the hole averaged 3.9% Cu & 14.96g/t Ag** to final depth of 182.88m
  - hole ended in mineralisation with the last 1.5m sample recording **4.46% Cu & 11.58g/t Ag, open at depth**
- **DAN25001** returned **52m @ 1.16% Cu** & 3.43g/t Ag from surface, including **7.6m at 3% Cu & 9.5g/t Ag** from 18.28m
- Drilling demonstrates **potential for significant expansion to historic non-compliant resource**. With the initial objectives of Danvers drilling achieved, to begin to understand the significance of this discovery, new drilling data will feed into a maiden JORC compliant mineral resource
- **Mineralisation remains open in all directions**. Follow up diamond drilling now being planned to drill out the mineralisation boundaries at Danvers and begin testing of the massive sedimentary structure at Hulk
- The next five (5) assays along strike from DAN25008 are due in the coming weeks

*“DAN25008 was prioritised for assay due to the abundance of visual sulphides observed during drilling, and these results have underpinned our confidence in those visuals prevalent in the Company’s prior work. We believe this drill hole ranks among the most significant copper intersections globally within the last 50 years and comfortably sits within the top 10 globally reported “grade-metre” copper results.*

*This discovery and outstanding results from Danvers is a clear testament to our technical team’s expertise and geological understanding, in particular the professionalism and persistence of Olga Solovieva and Sam Vaughan.*

*Our improved geological understanding of the Danvers area indicates a mineralised system that extends from surface over more than 175m vertically and potentially 7km in strike length - both to the northeast and southwest, providing scope for further high-impact intercepts from upcoming drilling. With our work updating the geological understanding at Danvers, we adapted our drill targets and DAN25008 resulted in mineralisation at least 30 metres below historical limits, with the hole terminating in high-grade copper mineralisation - suggesting considerable additional potential at depth. The increase in grade toward the bottom of the hole is encouraging and is validation of our methodology.*

*To illustrate the magnitude of this result, the DAN25001 intercept of 52m at 1.2% Cu - a strong result in its own right - now appears modest when viewed alongside the 175m @ 2.5% Cu from DAN25008. In the context of global copper supply constraints, the Company is well positioned to leverage these results with mineralisation from surface, supporting potential open pit mining activities and an open water port less than 80km from the deposit.*

**Troy Whittaker - Managing Director**

This announcement has been approved by the Board of White Cliff Minerals Limited.

## FURTHER INFORMATION

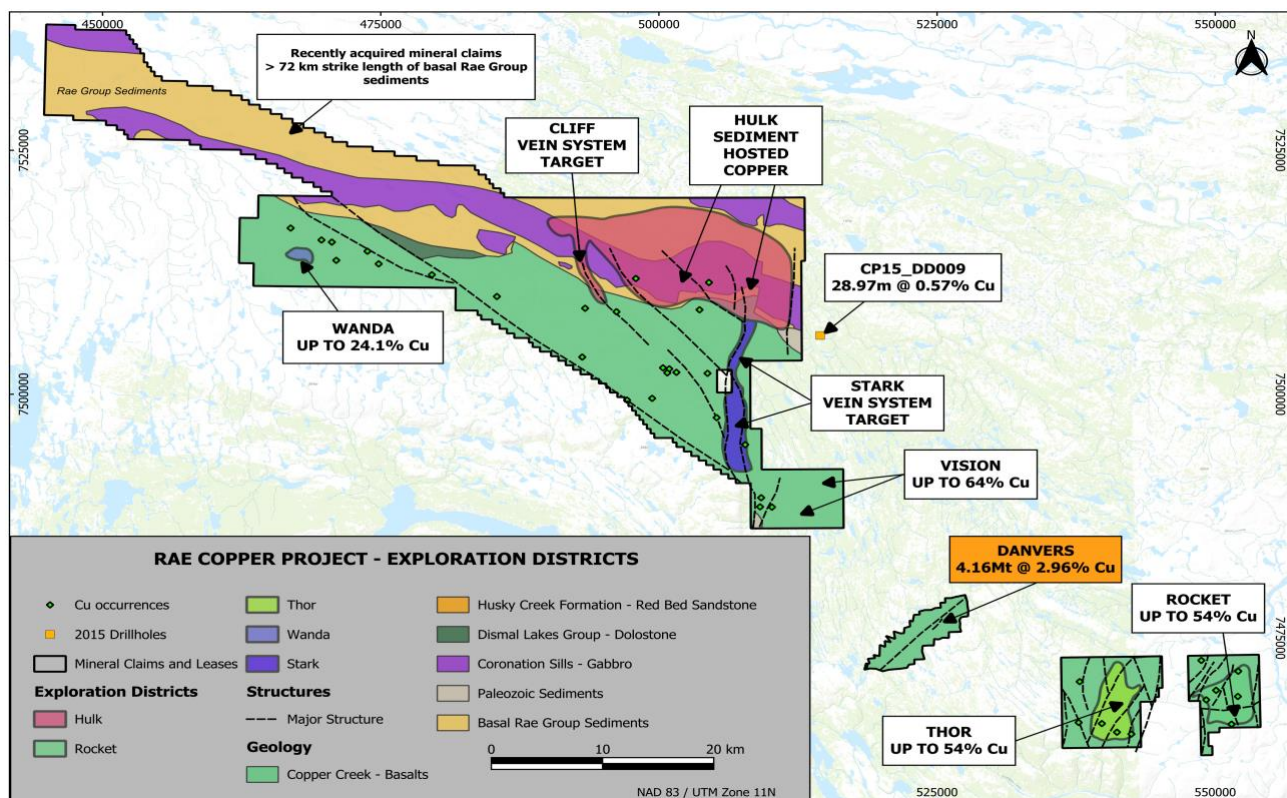


Figure 1 - White Cliff's Rae Copper Project Area.

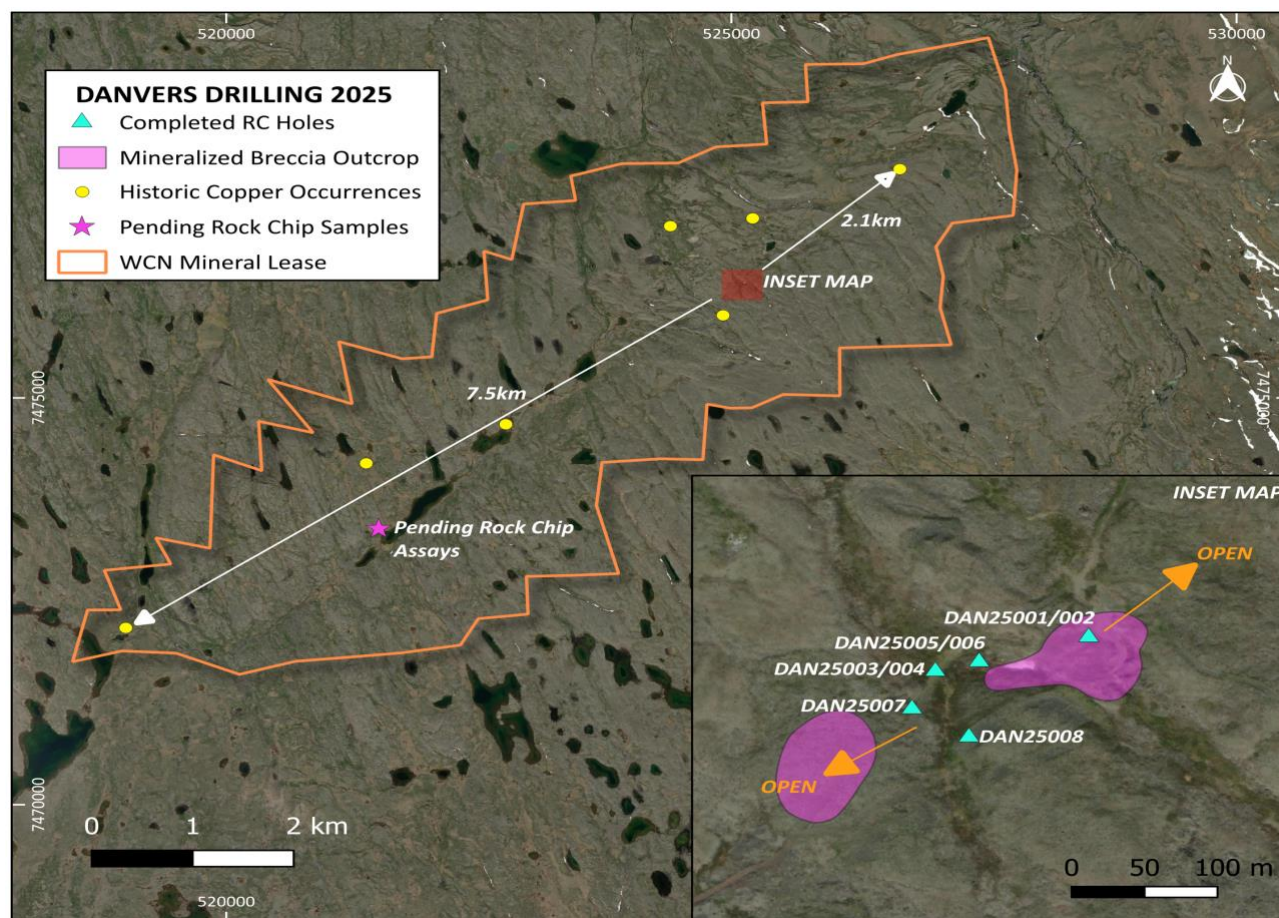
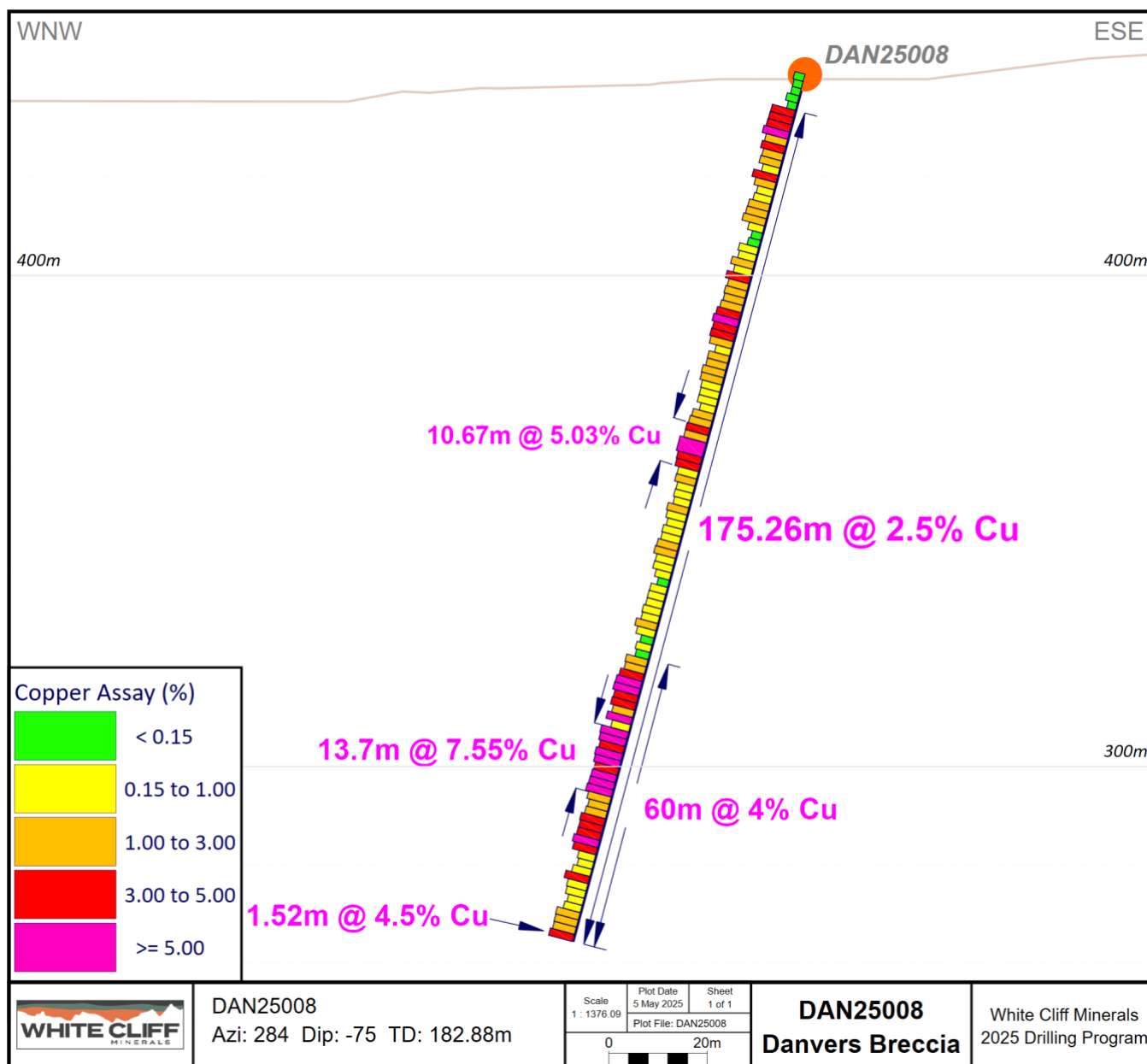


Figure 2 - Danvers Project. High grade historic copper occurrences present along a regional NE/SW trending fault zone for 7.5km's. Inset map shows drillhole collars, covering only a fraction of the wider prospective corridor. See ASX announcement dated 23 April 2025 "Extensive sulphides observed in step out drilling at Rae Copper Project" for observations relating to the field samples/rock chips.



**Table 1** - Table of rock sample locations in Figure 2 for pending rock chip assay results. See ASX announcement dated 23 April 2025 "Extensive sulphides observed in step out drilling at Rae Copper Project" for observations relating to the field samples/rock chips.

Sample ID	Datum	CRS	Easting	Northing	Elevation	Sample Type
V749907	NAD83	UTM Zone 11N	521476.5	7473355	625.9775	Outcrop
V749908	NAD83	UTM Zone 11N	521494.5	7473377	623.962	Outcrop
V749909	NAD83	UTM Zone 11N	521507.5	7473394	622.7024	Outcrop
V749910	NAD83	UTM Zone 11N	521507.5	7473397	621.6293	Outcrop
V749911	NAD83	UTM Zone 11N	521510.6	7473404	618.7275	Outcrop
V749912	NAD83	UTM Zone 11N	521526.2	7473494	618.6622	Subcrop



**Figure 3** - Drill section of DAN25008. Reported intervals are considered drilled thicknesses until true thickness can be proved.

Drillhole DAN25008 is an important step in the development of the Danvers copper deposit. An intercept of 175.26m at 2.5% copper is an outstanding result illustrating the continuous mineralisation which commences just below surface at 7.62m downhole. **The final 30m of DAN25008 which averages 2.37% Cu and 10.51g/t Ag exists below the trace of historic drilling, effectively extending the known high-grade mineralisation.**

This drillhole (DAN25008) in combination with the 2003/2005 drilling efforts by Coronation Minerals Inc. depict clear expansion potential of the Danvers breccia system.

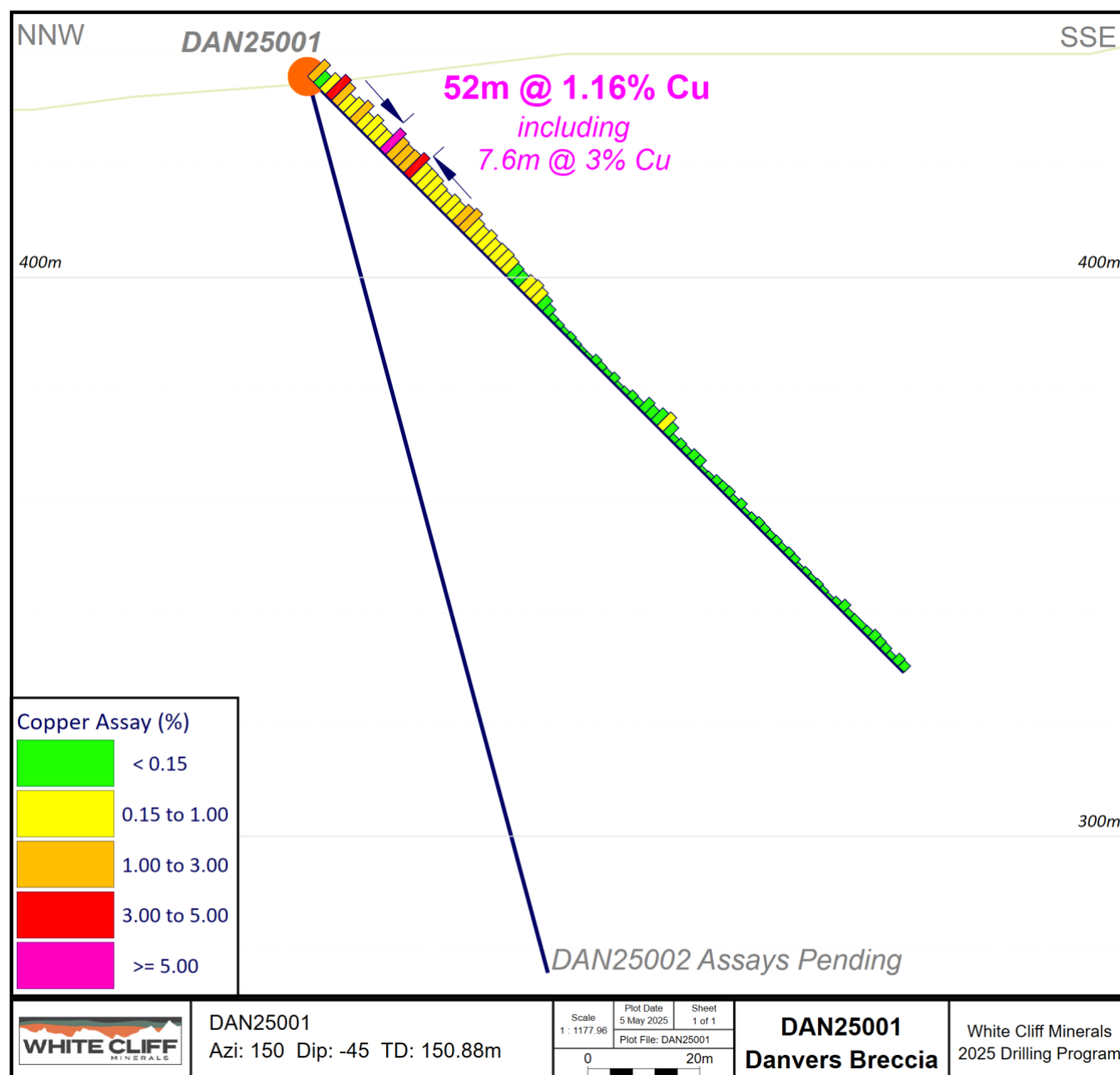
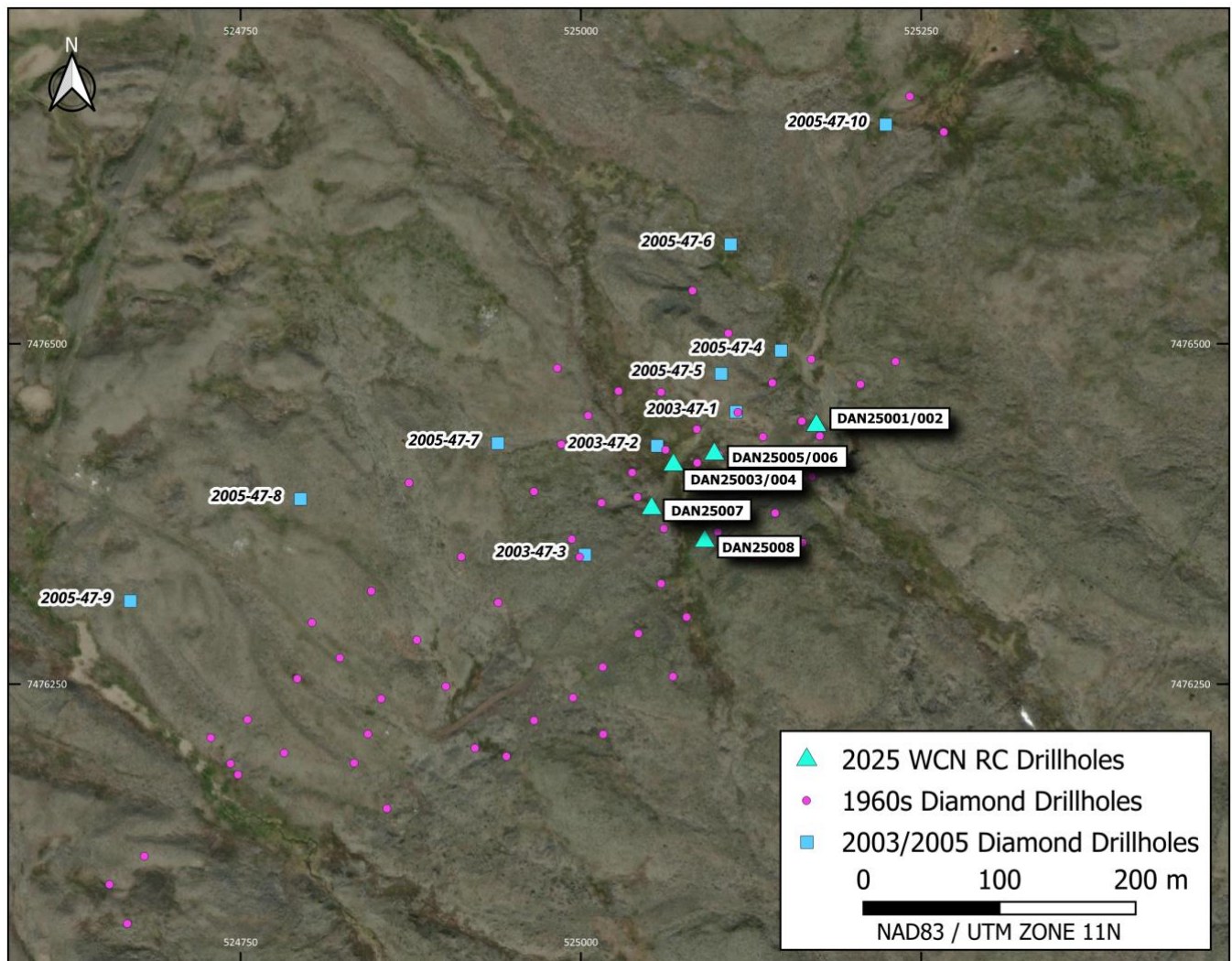


Figure 4 - Section of drillhole DAN25001. Reported interval is drilled thickness, not true thicknesses.



**Figure 5** - Plan view of the Danvers licence area, showing drill hole collars of 1. (in cyan triangles) the RC drilling undertaken by the Company in 2025; 2. (in pink circles) the historic drilling that depicts the historic resource outline; and 3. (in blue squares) 2003 and 2005 drilling by Coronation that was designed to commence lateral step out and down dip drilling.

**Table 2.** Collar information for the Company's reported reverse circulation drillholes.

Hole ID	Datum	CRS	Easting	Northing	Elevation	Azimuth	Dip	Depth (m)
DAN25001	NAD83	UTM Zone 11N	525173	7476440	436	150	-45	150.876
DAN25003	NAD83	UTM Zone 11N	525068	7476411	435	150	-45	150.876
DAN25008	NAD83	UTM Zone 11N	525091	7476355	441	284	-75	182.88

**Table 3.** Collar information for reported 2003/2005 diamond drillholes undertaken by Coronation Minerals.

Hole ID	Datum	CRS	Easting	Northing	Elevation	Azimuth	Dip	Depth (m)
2003-47-1	NAD83	UTM Zone 11N	525114	7476450	436	150	-65	122
2003-47-2	NAD83	UTM Zone 11N	525056	7476425	435	150	-60	155
2003-47-3	NAD83	UTM Zone 11N	525003	7476345	442	150	-60	200
2005-47-4	NAD83	UTM Zone 11N	525147	7476495	432	150	-60	244
2005-47-5	NAD83	UTM Zone 11N	525103	7476478	432	150	-60	258
2005-47-6	NAD83	UTM Zone 11N	525110	7476573	429	150	-60	498
2005-47-7	NAD83	UTM Zone 11N	524939	7476427	435	150	-60	500
2005-47-8	NAD83	UTM Zone 11N	524794	7476386	434	150	-60	509
2005-47-9	NAD83	UTM Zone 11N	524669	7476311	433	150	-60	473
2005-47-10	NAD83	UTM Zone 11N	525224	7476661	429	150	-60	494

**Table 4.** Rock chip information for samples included in Figure 1.

Sample ID	Easting	Northing	District	Ag (g/t)	Cu (%)
F005965	512291	7486880	Vision	152	64.02
F005950	552872	7466464	Rocket	14	54.12
F005921	541649	7468525	Thor	34	54.02
F005996	468678	7514161	Wanda	4	24.1

**Table 5.** Assay results for DAN25001 and DAN25008 (DAN25002 assays pending).

Hole ID	From (m)	To (m)	Ag (g/t)	Cu (%)
DAN25001	0.00	1.52	2.45	<b>1.365</b>
DAN25001	1.52	3.05	0.24	0.144
DAN25001	3.05	4.57	1.84	0.791
DAN25001	4.57	6.10	15.9	<b>4.770</b>
DAN25001	6.10	7.62	4.36	<b>2.220</b>
DAN25001	7.62	9.14	0.73	0.223
DAN25001	9.14	10.67	2.58	0.660
DAN25001	10.67	12.19	8.61	2.290
DAN25001	12.19	13.72	0.79	0.201
DAN25001	13.72	15.24	3.13	0.896
DAN25001	15.24	16.76	0.82	0.299
DAN25001	16.76	18.29	0.66	0.269
DAN25001	18.29	19.81	<b>20.4</b>	<b>5.940</b>
DAN25001	19.81	21.34	6.31	<b>1.710</b>
DAN25001	21.34	22.86	3.91	<b>1.110</b>
DAN25001	22.86	24.38	4.63	<b>1.405</b>
DAN25001	24.38	25.91	12.25	<b>4.950</b>
DAN25001	25.91	27.43	2.53	0.964
DAN25001	27.43	28.96	3.11	0.920
DAN25001	28.96	30.48	2.6	0.759
DAN25001	30.48	32.00	0.84	0.299
DAN25001	32.00	33.53	0.61	0.181
DAN25001	33.53	35.05	1.57	0.515
DAN25001	35.05	36.58	0.97	0.342
DAN25001	36.58	38.10	2.87	<b>1.030</b>
DAN25001	38.10	39.62	6.51	<b>2.550</b>
DAN25001	39.62	41.15	1.14	0.499
DAN25001	41.15	42.67	0.49	0.272
DAN25001	42.67	44.20	1.25	0.612
DAN25001	44.20	45.72	0.44	0.247
DAN25001	45.72	47.24	0.63	0.355
DAN25001	47.24	48.77	0.73	0.383
DAN25001	48.77	50.29	0.5	0.234
DAN25001	50.29	51.82	0.31	0.142
DAN25001	51.82	53.34	0.3	0.094
DAN25001	53.34	54.86	0.49	0.198
DAN25001	54.86	56.39	0.63	0.299
DAN25001	56.39	57.91	0.35	0.152
DAN25001	57.91	59.44	0.17	0.075

Hole ID	From (m)	To (m)	Ag (g/t)	Cu (%)
DAN25001	59.44	60.96	0.04	0.023
DAN25001	60.96	62.48	0.04	0.006
DAN25001	62.48	64.01	0.06	0.005
DAN25001	64.01	65.53	0.05	0.004
DAN25001	65.53	67.06	0.02	0.005
DAN25001	67.06	68.58	0.03	0.003
DAN25001	68.58	70.10	0.02	0.003
DAN25001	70.10	71.63	0.05	0.003
DAN25001	71.63	73.15	0.03	0.009
DAN25001	73.15	74.68	0.06	0.006
DAN25001	74.68	76.20	0.06	0.005
DAN25001	76.20	77.72	0.04	0.010
DAN25001	77.72	79.25	0.08	0.003
DAN25001	79.25	80.77	0.07	0.004
DAN25001	80.77	82.30	0.06	0.011
DAN25001	82.30	83.82	0.06	0.008
DAN25001	83.82	85.34	0.19	0.074
DAN25001	85.34	86.87	0.12	0.037
DAN25001	86.87	88.39	0.32	0.148
DAN25001	88.39	89.92	0.65	0.321
DAN25001	89.92	91.44	0.16	0.061
DAN25001	91.44	92.96	0.05	0.006
DAN25001	92.96	94.49	0.04	0.011
DAN25001	94.49	96.01	0.05	0.008
DAN25001	96.01	97.54	0.05	0.020
DAN25001	97.54	99.06	0.03	0.021
DAN25001	99.06	100.58	0.03	0.003
DAN25001	100.58	102.11	0.08	0.004
DAN25001	102.11	103.63	0.04	0.009
DAN25001	103.63	105.16	0.07	0.010
DAN25001	105.16	106.68	0.05	0.012
DAN25001	106.68	108.20	0.05	0.005
DAN25001	108.20	109.73	0.06	0.012
DAN25001	109.73	111.25	0.04	0.003
DAN25001	111.25	112.78	0.02	0.006
DAN25001	112.78	114.30	0.12	0.010
DAN25001	114.30	115.82	0.06	0.008
DAN25001	115.82	117.35	0.03	0.007
DAN25001	117.35	118.87	0.06	0.008
DAN25001	118.87	120.40	0.06	0.005
DAN25001	120.40	121.92	0.04	0.009

Hole ID	From (m)	To (m)	Ag (g/t)	Cu (%)
DAN25001	121.92	123.44	0.04	0.008
DAN25001	123.44	124.97	0.03	0.003
DAN25001	124.97	126.49	0.01	0.005
DAN25001	126.49	128.02	0.03	0.004
DAN25001	128.02	129.54	0.04	0.005
DAN25001	129.54	131.06	0.01	0.003
DAN25001	131.06	132.59	<0.01	0.002
DAN25001	132.59	134.11	0.03	0.006
DAN25001	134.11	135.64	0.04	0.020
DAN25001	135.64	137.16	0.05	0.006
DAN25001	137.16	140.21	0.03	0.007
DAN25001	140.21	141.73	0.01	0.008
DAN25001	141.73	143.26	0.05	0.020
DAN25001	143.26	144.78	0.02	0.015
DAN25001	144.78	146.30	0.05	0.012
DAN25001	146.30	147.83	<0.01	0.006
DAN25001	147.83	149.35	0.02	0.021
DAN25001	149.35	150.88	0.05	0.015
DAN25008	0.00	1.52	0.13	0.034
DAN25008	1.52	3.05	0.11	0.022
DAN25008	3.05	4.57	0.07	0.022
DAN25008	4.57	6.10	0.22	0.064
DAN25008	6.10	7.62	0.1	0.021
DAN25008	7.62	9.14	9.17	<b>3.140</b>
DAN25008	9.14	10.67	11.25	<b>3.460</b>
DAN25008	10.67	12.19	12.85	<b>3.890</b>
DAN25008	12.19	13.72	<b>26.1</b>	<b>7.590</b>
DAN25008	13.72	15.24	6.22	<b>1.735</b>
DAN25008	15.24	16.76	12.6	<b>3.450</b>
DAN25008	16.76	18.29	3.99	<b>1.150</b>
DAN25008	18.29	19.81	5.07	<b>1.535</b>
DAN25008	19.81	21.34	0.99	0.322
DAN25008	21.34	22.86	17.35	<b>4.620</b>
DAN25008	22.86	24.38	4.17	<b>1.155</b>
DAN25008	24.38	25.91	0.97	0.268
DAN25008	25.91	27.43	1.66	0.445
DAN25008	27.43	28.96	5.27	<b>1.350</b>
DAN25008	28.96	30.48	5.31	<b>1.555</b>
DAN25008	30.48	32.00	8.89	<b>2.630</b>
DAN25008	32.00	33.53	0.59	0.188
DAN25008	33.53	35.05	0.15	0.032
DAN25008	35.05	36.58	0.2	0.061
DAN25008	36.58	38.10	1.85	0.692
DAN25008	38.10	39.62	1.17	0.392
DAN25008	39.62	41.15	6.65	<b>2.420</b>
DAN25008	41.15	42.67	1.49	0.496
DAN25008	42.67	44.20	10.5	<b>3.730</b>
DAN25008	44.20	45.72	3.42	<b>1.045</b>

Hole ID	From (m)	To (m)	Ag (g/t)	Cu (%)
DAN25008	45.72	47.24	5.89	<b>1.625</b>
DAN25008	47.24	48.77	4.29	<b>1.160</b>
DAN25008	48.77	50.29	6.89	<b>1.835</b>
DAN25008	50.29	51.82	13.45	<b>3.820</b>
DAN25008	51.82	53.34	<b>24.7</b>	<b>6.840</b>
DAN25008	53.34	54.86	12.6	<b>3.320</b>
DAN25008	54.86	56.39	15.2	<b>4.050</b>
DAN25008	56.39	57.91	8.96	<b>2.360</b>
DAN25008	57.91	59.44	0.71	0.192
DAN25008	59.44	60.96	5.14	<b>1.250</b>
DAN25008	60.96	62.48	4.75	<b>1.120</b>
DAN25008	62.48	64.01	10.9	<b>2.550</b>
DAN25008	64.01	65.53	7.6	<b>2.100</b>
DAN25008	65.53	67.06	3.23	0.861
DAN25008	67.06	68.58	2.13	0.694
DAN25008	68.58	70.10	2.24	0.721
DAN25008	70.10	71.63	0.61	0.179
DAN25008	71.63	73.15	3.72	<b>1.315</b>
DAN25008	73.15	74.68	4.85	<b>2.030</b>
DAN25008	74.68	76.20	6.36	<b>3.070</b>
DAN25008	76.20	77.72	6.39	<b>2.820</b>
DAN25008	77.72	80.77	<b>20.5</b>	<b>9.360</b>
DAN25008	80.77	82.30	10.05	<b>4.700</b>
DAN25008	82.30	83.82	8.25	<b>3.860</b>
DAN25008	83.82	85.34	1.89	0.981
DAN25008	85.34	86.87	2.07	<b>1.125</b>
DAN25008	86.87	88.39	0.78	0.365
DAN25008	88.39	89.92	0.94	0.420
DAN25008	89.92	91.44	0.49	0.261
DAN25008	91.44	92.96	2.5	<b>1.295</b>
DAN25008	92.96	94.49	1.7	0.827
DAN25008	94.49	96.01	0.86	0.361
DAN25008	96.01	97.54	1.93	0.842
DAN25008	97.54	99.06	1.39	0.664
DAN25008	99.06	100.58	3.66	<b>1.450</b>
DAN25008	100.58	102.11	4.64	<b>1.935</b>
DAN25008	102.11	103.63	1.33	0.581
DAN25008	103.63	105.16	1.58	0.694
DAN25008	105.16	106.68	0.55	0.187
DAN25008	106.68	108.20	0.11	0.044
DAN25008	108.20	109.73	0.79	0.286
DAN25008	109.73	111.25	0.83	0.311
DAN25008	111.25	112.78	0.95	0.294
DAN25008	112.78	114.30	1.65	0.522
DAN25008	114.30	115.82	1.5	0.383
DAN25008	115.82	117.35	7.8	<b>1.650</b>
DAN25008	117.35	118.87	2.81	0.556
DAN25008	118.87	120.40	0.38	0.071



Hole ID	From (m)	To (m)	Ag (g/t)	Cu (%)
DAN25008	120.40	121.92	0.95	0.186
DAN25008	121.92	123.44	0.59	0.104
DAN25008	123.44	124.97	8.3	<b>1.695</b>
DAN25008	124.97	126.49	5.89	<b>1.225</b>
DAN25008	126.49	128.02	14.75	<b>3.660</b>
DAN25008	128.02	129.54	<b>26.8</b>	<b>6.820</b>
DAN25008	129.54	131.06	<b>30.3</b>	<b>8.010</b>
DAN25008	131.06	132.59	13.5	<b>3.540</b>
DAN25008	132.59	134.11	16.7	<b>4.650</b>
DAN25008	134.11	135.64	4.39	<b>1.550</b>
DAN25008	135.64	137.16	18.6	<b>5.890</b>
DAN25008	137.16	138.68	1.91	0.561
DAN25008	138.68	140.21	<b>37.6</b>	<b>12.450</b>
DAN25008	140.21	141.73	<b>27.9</b>	<b>9.460</b>
DAN25008	141.73	143.26	15.65	<b>4.900</b>
DAN25008	143.26	144.78	<b>35.7</b>	<b>10.500</b>
DAN25008	144.78	146.30	<b>27.1</b>	<b>7.550</b>
DAN25008	146.30	147.83	13.25	<b>3.630</b>
DAN25008	147.83	149.35	<b>20.2</b>	<b>5.310</b>
DAN25008	149.35	150.88	<b>22.7</b>	<b>6.020</b>
DAN25008	150.88	152.40	<b>32.1</b>	<b>8.200</b>
DAN25008	152.40	153.92	9.95	<b>2.680</b>

Hole ID	From (m)	To (m)	Ag (g/t)	Cu (%)
DAN25008	153.92	155.45	4.1	<b>1.045</b>
DAN25008	155.45	156.97	6.31	<b>1.560</b>
DAN25008	156.97	158.50	19.3	<b>4.340</b>
DAN25008	158.50	160.02	14.2	<b>3.250</b>
DAN25008	160.02	161.54	15.5	<b>3.510</b>
DAN25008	161.54	163.07	<b>33.3</b>	<b>7.370</b>
DAN25008	163.07	164.59	16.1	<b>3.670</b>
DAN25008	164.59	166.12	1.62	0.332
DAN25008	166.12	167.64	0.94	0.188
DAN25008	167.64	169.16	3.75	0.634
DAN25008	169.16	170.69	<b>25.9</b>	<b>4.250</b>
DAN25008	170.69	172.21	5.97	0.968
DAN25008	172.21	173.74	4.09	0.707
DAN25008	173.74	175.26	1.31	0.212
DAN25008	175.26	176.78	2.15	0.403
DAN25008	176.78	178.31	15.9	<b>2.990</b>
DAN25008	178.31	179.83	10.7	<b>2.560</b>
DAN25008	179.83	181.36	7.26	<b>2.230</b>
DAN25008	181.36	182.88	11.85	<b>4.460</b>

### Competent Persons Statement

The information in this report that relates to exploration results, mineral resources or ore reserves is based on information compiled by Roderick McIlree, who is a Fellow of the Australasian Institute of Mining and Metallurgy. Mr McIlree is an employee of White Cliff Minerals. Mr McIlree has sufficient experience which is relevant to the style of mineralisation and type of deposits under consideration and to the activity that he is undertaking to qualify as a Competent Person as defined in the 2012 edition of the 'Australian Code for Reporting Exploration Results, Mineral Resources and Ore Reserves' (the JORC Code). Mr McIlree consents to the inclusion of this information in the form and context in which it appears in this report.

### JORC Compliance Statement

Where statement in this announcement refer to exploration results which previously been reported, the Company confirms that it is not aware of any new information or data that materially affects the information included in the original announcements. The Company confirms that the form and context in which the Competent Person's findings are presented have not materially modified from the original market announcements.

### Caution Regarding Forward-Looking Statements

This document may contain forward-looking statements concerning White Cliff Minerals. Forward-looking statements are not statements of historical fact and actual events and results may differ materially from those described in the forward-looking statements because of a variety of risks, uncertainties and other factors. Forward-looking statements are inherently subject to business, economic, competitive, political and social uncertainties and contingencies. Many factors could cause the Company's actual results to differ materially from those expressed or implied in any forward-looking information by White Cliff Minerals, or, on behalf of the Company.

Forward-looking statements in this document are based on White Cliff Minerals' beliefs, opinions and estimates of the Company as of the dates the forward-looking statements are made, and no obligation is assured to update forward-looking statements if these beliefs, opinions and estimates should change or to reflect future developments.





## About White Cliff Minerals

The **Great Bear Lake** area is Identified as having Canada's highest probability for the hosting of iron-oxide-copper-gold uranium plus silver-style mineralisation in the Country. Results from the Company's maiden exploration include **42.6% Cu**, **39.5% Cu** and **38.2g/t Au** from the Phoenix prospect and the **highest-grade silver rock chip** assays in recent history **7.54% Ag** and **5.35% Ag** from Slider

The **Rae Cu-Ag project** contains numerous high grade Cu mineralisation occurrences and hosts all first-order controls for a sediment-hosted copper deposit and includes a historic resource estimate of **4.16 million tons at a grade of 2.96% Cu<sup>1</sup>**. Highlights from the maiden exploration campaign include **64.02% Cu & 62.02% Cu** from DON and **55.01% Cu & 46.07% Cu** from PAT within the Vision district, and **54.12%, 53.82%** from Rocket, and **54.02%** from Thor.

The historic resource estimate at the Danvers Prospect, is a historic estimate and not in accordance with the JORC Code. The Company notes that the estimate and historic drilling results dated 1967 and 1968 are not reported in accordance with the NI 43-101 or JORC Code 2012. A competent person has not done sufficient work to disclose the estimate/results in accordance with the JORC Code 2012. It is possible that following further evaluation and/or exploration work that the confidence in the estimate and reported exploration results may be reduced when reported under the JORC Code 2012. The supporting information provided in the announcement dated 26 November 2024 continues to apply and has not materially changed.

## Enquiries

**Troy Whittaker**  
Managing Director  
P: +61 8 9486 4036  
E: [info@wcminerals.com.au](mailto:info@wcminerals.com.au)

<sup>1</sup> See ASX Announcement dated 26 November 2024 "WCN Acquires Highly Prospective and Proven Copper Project"

## APPENDIX 1.

The following Tables are provided to ensure compliance with the JORC Code (2012 Edition) requirements for the reporting of Exploration Results at the Rae Copper Project.

### Section 1: Sampling Techniques and Data

(Criteria in this section applies to all succeeding sections)

CRITERIA	JORC CODE EXPLANATION	COMMENTARY
Sampling techniques	<ul style="list-style-type: none"> <li><i>Nature and quality of sampling (e.g., cut channels, random chips, or specific specialised industry standard measurement tools appropriate to the minerals under investigation, such as downhole gamma sondes, handheld XRF instruments, etc.). These examples should not be taken as limiting the broad meaning of sampling.</i></li> <li><i>Include reference to measures taken to ensure sample representivity and the appropriate calibration of any measurement tools or systems used.</i></li> <li><i>Aspects of the determination of mineralisation that are Material to the Public Report.</i></li> <li><i>In cases where 'industry standard' work has been done this would be relatively simple (e.g., 'reverse circulation drilling was used to obtain 1 m samples from which 3 kg was pulverised to produce a 30 g charge for fire assay'). In other cases, more explanation may be required, such as where there is coarse gold that has inherent sampling problems. Unusual commodities or mineralisation types (e.g., submarine nodules) may warrant disclosure of detailed information.</i></li> </ul>	<ul style="list-style-type: none"> <li>Reverse circulation (RC) drilling has been conducted in 2025. The drillholes were sampled in their entirety on 5-foot (1.52m) intervals. Returned material was passed through a level 3-tier riffle splitter, producing a 12.5% sample split and a retention sample. Representative chips for logging were taken from the retention sample by sieving from the retention sample. Chips are washed at the camp location, prior to storage in chip trays.</li> <li>Samples from the RC drilling are sent to ALS Yellowknife for preparation under code PREP-31B, which entails crushing to 70% less than 2mm, riffle splitting 1kg, with the split pulverised to better than 85% passing 75 microns. Followed by multi-element ICP-MS analysis after 4-acid digestion (ME-MS61) and fire assay gold (Au-ICP21).</li> <li>2024 rock chip samples from the Nunavut based Rae Copper Project were sent to Yellowknife via secure air freight, and received by an employee of Aurora Geosciences Ltd., who ensured sample security and maintained custody until delivered to ALS laboratories, Yellowknife for preparation. Samples are prepared under code PREP-31D and analysed by ME-ICPORE, an analysis package designed for massive sulphides. Overassay (&gt;40% Cu) are undertaken by Cu-VOL61. Samples with visible native copper were analysed by Cu-SCR21. All samples from Danvers target area underwent gold analysis by 30g fire assay and ICP-AES under code Au-ICP21, samples from Hulk undergo the same process however, without Au-ICP21. Final assay results and certificates are sent by ALS directly to both the WCN senior geologist and country manager to undertake independent quality control before release of results.</li> <li>2025 rock chip samples from the Nunavut based Rae Copper Project will be shipped to Yellowknife via secure air freight, and received by an employee of Aurora Geosciences Ltd., who ensures sample security and maintains custody until delivered to ALS laboratories, Yellowknife for preparation. Samples will be prepared under code PREP-31B, which entails crushing to 70% less than 2mm, riffle splitting 1kg, with the split pulverised to better than 85% passing 75 microns. Followed by multi-element ICP-MS analysis after 4-acid digestion (ME-MS61) and fire assay gold (Au-ICP21).</li> <li>Historic drilling completed by Kaizen Discovery Corp. Diamond drillhole CP15-DD009, half core samples were sent to ALS Minerals preparatory lab in Yellowknife, N.T., followed by secure transport to and multi element assay at ALS's laboratory in North Vancouver, B.C. Analytical procedures consisted of 33 Element Four Acid ICP-AES, followed by automatic Ore Grade Four Acid ICP-AES for all copper over limits.</li> <li>2003/2005 diamond drilling completed by Coronation Minerals produced half core samples which were flown to Loring Laboratories Inc. of Calgary for assay in the 2005 campaign, 2003 samples were sent to ALS Chemex (Vancouver). The entire sample was crushed to 2mm using a primary jaw and secondary cone crusher. The sample was homogenized and a split of 250-350 grams is taken and pulverized using a TM ring and puck pulverizer to 95 % -150 mesh. The pulp is then rolled 100 times to ensure complete homogenization placed in a sample bag ready for analysis. 0.5 g was digested by HCl, HNO3 and HClO4 and analysed for copper and nickel by ICP. Silver was analysed after HNO3 and HCl digestion followed by atomic absorption, with samples greater than 30 ppm silver re-analysed with fire assay with gravimetric finish. Gold and PGMs were analysed by a 30 g split by fire assay followed by ICP analysis.</li> </ul>

CRITERIA	JORC CODE EXPLANATION	COMMENTARY
<b>Drilling techniques</b>	<ul style="list-style-type: none"> <li>Drill type (e.g., core, reverse circulation, open-hole hammer, rotary air blast, auger, Bangka, sonic etc.) and details (e.g., core diameter, triple or standard tube, depth of diamond tails, face-sampling bit or other type, whether core is orientated and if so, by what method, etc.).</li> </ul>	<ul style="list-style-type: none"> <li>2025 drilling was completed by reverse circulation (RC) drilling methods by Northspan Explorations Ltd. utilising a heli-portable hornet machine. 5-foot rod intervals with a 3.5-inch face sampling hammer with inner-tube assembly and 3.5-inch string diameter.</li> <li>Historic drilling completed by Kaizen Discovery Corp. in 2015 utilised a diamond drilling rig operated by Peak Drilling contractors. NQ2 diameter was used. Core-orientation procedure is unknown. Standard or triple tube drilling is unknown.</li> <li>2003/2005 conventional diamond drilling (LY 38 drill model) of NQ core diameter.</li> </ul>
<b>Drill sample recovery</b>	<ul style="list-style-type: none"> <li>Method of recording and assessing core and chip sample recoveries and results assessed.</li> <li>Measures taken to maximise sample recovery and ensure representative nature of the samples.</li> <li>Whether a relationship exists between sample recovery and grade and whether sample bias may have occurred due to preferential loss/gain of fine/coarse material.</li> </ul>	<ul style="list-style-type: none"> <li>2025 RC drilling by White Cliff Minerals changes sample recovery and sample condition at the rig site during drilling operation. An estimation (qualitative) of recovery was completed on the sample returned from the complete drill interval if loss is believed to have occurred. Reasons for loss discussed between rigsite geologist and driller. Wet samples have not been encountered. Sample bias is believed to be negligible due to a preferential loss of fine/coarse material. Riffle splitting of the returned material to generate a sample produces a homogenous sample for the interval, ensuring representative sampling. Field duplicate samples are taken by spearing the homogenised retention sample, post riffle splitting.</li> <li>2015 Kaizen Discovery Corp - Core recovery was calculated as the difference between drilled intervals between drillers core blocks and the length of recovered core. Representative core samples were taken by sampling half core, cutting the core along the long axis with an electric powered core saw. No relationship is observed between recovery and grade for drillhole CP15_DD009 which returned 99.5% core recovery.</li> <li>2003/2005 diamond drilling completed by Coronation Minerals - No note of core recovery within source publication for Coronation Minerals' program. Representative half core samples were taken for assay. No relationship between grade and recovery can be commented on due to lack of recovery information.</li> </ul>
<b>Logging</b>	<ul style="list-style-type: none"> <li>Whether core and chip samples have been geologically and geotechnically logged to a level of detail to support appropriate Mineral Resource estimation, mining studies and metallurgical studies.</li> <li>Whether logging is qualitative or quantitative in nature. Core (or costean, channel, etc) photography.</li> <li>The total length and percentage of the relevant intersections logged.</li> </ul>	<ul style="list-style-type: none"> <li>2025 RC drilling by White Cliff Minerals - All intervals returned are logged for lithology and mineralisation at the camp location.</li> <li>2024 and 2025 rock chip sampling by White Cliff Minerals - sampling was undertaken on surface alongside lithologic, alteration and mineralisation logging. Data input presented in tabulated form alongside coordinates and sample numbers.</li> <li>High resolution photographs are available for RC chips from the 2025 program.</li> <li>2015 Kaizen Discovery Corp – core was logged for lithology, alteration, mineralisation and structure. All recovered intervals were logged.</li> <li>2015 Kaizen Discovery Corp – core photography is not available. Photographs of select intervals are available.</li> <li>2003/2005 diamond drilling completed by Coronation Minerals - Core intervals were logged within a core shack at the Hope Lake Airstrip. Descriptive notes are recorded including note of rock type, alteration and mineralised intersections. No geotechnical logging is available. The level of detail would not be sufficient for inclusion in a Mineral Resource estimation to JORC standards. All recovered core was logged. No photographs of the drillcore are available.</li> </ul>
<b>Sub-sampling techniques and sample preparation</b>	<ul style="list-style-type: none"> <li>If core, whether cut or sawn and whether quarter, half or all core taken.</li> <li>If non-core, whether riffled, tube sampled, rotary split, etc and whether sampled wet or dry.</li> <li>For all sample types, the nature, quality and appropriateness of the sample preparation technique.</li> </ul>	<ul style="list-style-type: none"> <li>2025 RC drilling by White Cliff Minerals – Holes were sampled in full using 1.52m intervals as per the 5-foot rod lengths of the rig. Assay samples were collected as a 12.5% split from a 3-tier riffle splitter used to ensure a homogenous and representative sample of the drilled interval.</li> <li>2025 RC drilling by White Cliff Minerals – sample size is deemed appropriate to the base metal mineralisation which is hosted by fine to medium grained copper sulphides and their associated secondary minerals (malachite, azurite)</li> <li>2024 and 2025 rock chip sampling by White Cliff Minerals - Rock chip sample sizes are deemed appropriate for the style of mineralisation targeted and able to quantify the precious and base metal content. A range of 0.56-1.96 kg of material was assayed with an average of 1.1kg for 2024 samples. Sample weights are to be determined for 2025</li> </ul>



CRITERIA	JORC CODE EXPLANATION	COMMENTARY
	<ul style="list-style-type: none"> <li><i>Quality control procedures adopted for all sub-sampling stages to maximise representivity of samples.</i></li> <li><i>Measures taken to ensure that the sampling is representative of the in-situ material collected, including for instance results for field duplicate/second-half sampling.</i></li> <li><i>Whether sample sizes are appropriate to the grain size of the material being sampled.</i></li> </ul>	<p>samples.</p> <ul style="list-style-type: none"> <li>2015 Kaizen Discovery Corp – Standard half core intervals were assayed. Quarter core duplicate samples were taken at specified intervals downhole as part of the quality assurance and control protocols. A total of 6 quarter core samples were taken within the reported drillhole.</li> <li>2003/2005 diamond drilling completed by Coronation Minerals - Half core samples taken, split by hand on site. The nature of sample preparation is deemed fit for purpose for the target mineralisation style. No note of field duplicates are recorded by Coronation Minerals. Loring Laboratories conducted lab duplicate analyses. Sampling of half core is deemed appropriate for the mineralization being targeted.</li> </ul>
<b>Quality of assay data and laboratory tests</b>	<ul style="list-style-type: none"> <li><i>The nature, quality and appropriateness of the assaying and laboratory procedures used and whether the technique is considered partial or total.</i></li> <li><i>For geophysical tools, spectrometers, handheld XRF instruments, etc., the parameters used in determining the analysis including instrument make and model, reading times, calibrations factors applied and their derivation, etc.</i></li> <li><i>Nature of quality control procedures adopted (e.g., standards, blanks, duplicates, external laboratory checks) and whether acceptable levels of accuracy (i.e., lack of bias) and precision have been established.</i></li> </ul>	<ul style="list-style-type: none"> <li>2025 RC drilling by White Cliff Minerals – Samples are sent to ALS Yellowknife for preparation under code PREP-31B, which entails crushing to 70% less than 2mm, riffle splitting 1kg, with the split pulverised to better than 85% passing 75 microns. Followed by multi-element ICP-MS analysis after 4-acid digestion (ME-MS61) and fire assay gold (Au-ICP21). 4-acid digestion is considered a near-total digestion except for barite, rare earth oxides, columbite-tantalite, and titanium, tin and tungsten minerals, which may not be fully digested.</li> <li>2025 RC drilling by White Cliff Minerals – A schedule of quality control samples is inserted into the sample stream at a rate of 7%, including field duplicates and coarse blanks (OREAS C26e). Field duplicates were taken from the retention sample by spearing the homogenised chips after riffle splitting.</li> <li>Further to the inserted quality control samples ALS Laboratories conducts their own QC including reference materials during the analyses, matching the element concentrations to those observed in the analysis dataset, ensuring quality in reported assay results.</li> <li>2025 rock chip sampling - will be shipped to Yellowknife via secure air freight, and received by an employee of Aurora Geosciences Ltd., who ensures sample security and maintains custody until delivered to ALS laboratories, Yellowknife for preparation. Samples will be prepared under code PREP-31B, which entails crushing to 70% less than 2mm, riffle splitting 1kg, with the split pulverised to better than 85% passing 75 microns. Followed by multi-element ICP-MS analysis after 4-acid digestion (ME-MS61) and fire assay gold (Au-ICP21).</li> <li>2025 rock chip sampling by White Cliff Minerals – Blanks are inserted at a rate of 4% (OREAS C26e), no field duplicates of certified reference materials are inserted into the sample stream.</li> <li>2024 rock chip sampling by White Cliff Minerals - Sent to Yellowknife via secure air freight, and received by an employee of Aurora Geosciences Ltd., who ensured sample security and maintained custody until delivered to ALS laboratories, Yellowknife for preparation. Samples are prepared under code PREP-31D and analysed by ME-ICPORE, an analysis package designed for massive sulphides. Overassay (&gt;40% Cu) are undertaken by Cu-VOL61. Samples with visible native copper were analysed by Cu-SCR21. All samples underwent gold analysis by 30g fire assay and ICP-AES under code Au-ICP21.</li> <li>2024 rock chip sampling by White Cliff Minerals - Blanks (BL-10 CDN Laboratories) were inserted at a rate of 4 %. No field duplicates or certified reference materials were inserted into the sample stream.</li> <li>2015 Kaizen Discovery Corp – Samples were analysed by ALS laboratories Vancouver using prep code PREP-31B which entails crushing to 70% less than 2mm, riffle splitting 1kg, with the split pulverised to better than 85% passing 75 microns. Analysis by ME-ICP61, a four-acid (near total) digestion followed by multi-element ICP-AES finish. A total of 6 quarter core samples were taken within the reported drillhole.</li> <li>2003/2005 diamond drilling completed by Coronation Minerals -0.5 g was digested by HCl, HNO3 and HClO4 and analysed for copper and nickel by ICP. Silver was analysed after HNO3 and HCl digestion followed by atomic absorption, with samples greater than 30 ppm silver re-analysed with fire assay with gravimetric finish. Gold and PGMs were analysed by a 30 g split by fire assay followed by ICP analysis. Digestion for copper and nickel is noted</li> </ul>

CRITERIA	JORC CODE EXPLANATION	COMMENTARY
		to be a partial digestion. No geophysical tools were used. No note of insertion of quality control samples, including blanks, standards or duplicates were noted by Coronation Minerals. Loring Laboratories conducted lab duplicate analyses.
<b>Verification of sampling and assaying</b>	<ul style="list-style-type: none"> <li><i>The verification of significant intersections by either independent or alternative company personnel.</i></li> <li><i>The use of twinned holes.</i></li> <li><i>Documentation of primary data, data entry procedures, data verification, data storage (physical and electronic) protocols.</i></li> <li><i>Discuss any adjustment to assay data.</i></li> </ul>	<ul style="list-style-type: none"> <li>2025 RC drilling by White Cliff Minerals – Primary data collection is completed by White Cliff Minerals employees or contracting geologists from Aurora Geosciences Ltd. Data is entered into Excel logging templates and reviewed by White Cliff Minerals senior geologist. Data is then stored on a cloud server with 2-factor authorisation. All received results are reviewed by the senior geologist, country manager and designated competent person.</li> <li>No independent review of the historic drilling (2003/2005) has been completed by personnel independent to White Cliff Minerals. Documentation of primary data in historic programs is unknown.</li> <li>2015 Kaizen Discovery Corp – Data was entered into Excel logging templates. No information regarding data verification and storage protocols are known.</li> <li>No adjustment to assay data, reported intervals are calculated by weighted average accounting for sample length and reported concentration. 2025 RC drilling by White Cliff Minerals – drilled intervals are recorded on site in feet (Imperial) and later converted to metres (metric) as per 1 foot = 0.3048 metres.</li> <li>No twin holes are reported.</li> </ul>
<b>Location of data points</b>	<ul style="list-style-type: none"> <li><i>Accuracy and quality of surveys used to locate drill holes (collar and down-hole surveys), trenches, mine workings and other locations used in Mineral Resource estimation.</i></li> <li><i>Specification of the grid system used.</i></li> <li><i>Quality and adequacy of topographic control.</i></li> </ul>	<ul style="list-style-type: none"> <li>2025 RC drilling by White Cliff Minerals – Collar locations were pegged out using a Garmin GPSMAP 66sr (Multiband) with foresight and backsight stakes demarcating the azimuth.</li> <li>2024 and 2025 rock chip sampling by White Cliff Minerals - Locations of reported rock chip assay results are in NAD83 / UTM Zone 11 N. Positions of samples determined in the field by handheld Garmin GPSMAP 66sr or Garmin GPSMAP 65 units.</li> <li>2015 Kaizen Discovery Corp – No note of collar survey method or method of downhole surveying.</li> <li>Coordinates of drillholes from the 2003/2005 Coronation Minerals program are presented in NAD83 UTM Zone 11N. Location of collars was determined by handheld GPS.</li> <li>Topographic control is provided by a DTM created from the Canvec data series, an open-source dataset from the Government of Canada, Natural Resources. Data provided as ESRI shapefile with 10m contours.</li> </ul>
<b>Data spacing and distribution</b>	<ul style="list-style-type: none"> <li><i>Data spacing for reporting of Exploration Results.</i></li> <li><i>Whether the data spacing, and distribution is sufficient to establish the degree of geological and grade continuity appropriate for the Mineral Resource and Ore Reserve estimation procedure(s) and classifications applied.</i></li> <li><i>Whether sample compositing has been applied.</i></li> </ul>	<ul style="list-style-type: none"> <li>2025 RC drilling by White Cliff Minerals – Maiden drilling program spacing of collars between 28 and 60 m at the Danvers target area. Drilling at the Hulk target is planned on a regional scale with kilometres between holes. Additional work will be required at all targets to establish continuity for inclusion in estimation to JORC standards.</li> <li>2024 and 2025 rock chip sampling by White Cliff Minerals - Reported rock chip results are spaced based on locations of prospective lithologies, alterations and visible mineralisation.</li> <li>2015 Kaizen Discovery Corp – Drillhole CP15_DD009 formed part of a regional drilling campaign, with drillhole CP15_DD008 located 10 km east. This drilling does not have sufficient data density to inform geological or grade continuity.</li> <li>2003/2005 diamond drilling completed by Coronation Minerals – drillholes cover 656 m NE/SW dimension with spacing of between 30 and 150m between adjacent drillholes. The drilling completed by Coronation Minerals is not sufficient for a mineral resource estimation to JORC standards.</li> <li>No sample compositing applied.</li> </ul>
<b>Orientation of data in relation to geological structure</b>	<ul style="list-style-type: none"> <li><i>Whether the orientation of sampling achieves unbiased sampling of possible structures and the extent to which this is known, considering the deposit type.</i></li> <li><i>If the relationship between the drilling orientation and the orientation of key mineralised structures is</i></li> </ul>	<ul style="list-style-type: none"> <li>2025 RC drilling by White Cliff Minerals – Mineralisation at Danvers is hosted within a breccia/vein system which strikes NE/SW with a variable dip to the NW inferred. Drilling completed with azimuth towards the SSE, perpendicular to the strike of the inferred mineralisation. Oblique intersections of the hole and the mineralisation is expected, and thus all reported intervals are drilled widths, not true thicknesses. More work will be required to understand the trend of mineralisation at Danvers and report true thicknesses.</li> <li>2024 and 2025 rock chip sampling by White Cliff Minerals - Grab sampling is conducted where mineralisation or alteration of interest is observed. Sampling is conducted as a composite of the outcrop to produce a</li> </ul>

CRITERIA	JORC CODE EXPLANATION	COMMENTARY
	<i>considered to have introduced a sampling bias, this should be assessed and reported if material.</i>	<p>representative sample.</p> <ul style="list-style-type: none"> <li>2015 Kaizen Discovery Corp – Reported drillhole is vertical, this is deemed appropriate to test the shallow north dipping sediments.</li> <li>The 2003/2005 drillholes were conducted at inclinations of between -60 and -65. The intersection angle with the known mineralisation is unknown, therefore a drilled interval length is presented, the assay intervals are not treated as true thicknesses. All drillholes were towards 150 azimuth (SSE) to intersect the NE/SW trending zone perpendicular to strike.</li> </ul>
<b>Sample security</b>	<ul style="list-style-type: none"> <li><i>The measures taken to ensure sample security.</i></li> </ul>	<ul style="list-style-type: none"> <li>2025 RC drilling by White Cliff Minerals – Samples are bagged at the rig site with the corresponding sample tag placed inside the bag and secured by cable ties. Samples were placed into larger rice sacks, which were labelled and cable tied closed. Samples were stored at the sample farm in a remote field camp before transporting to Yellowknife by chartered flight where the samples are met by an employee of Aurora Geosciences Ltd and delivered directly to ALS preparation laboratory Yellowknife.</li> <li>ALS Laboratory conduct checks to ensure the delivered samples match the list of samples sent for assay as per the submittal form and all are accounted for.</li> <li>2015 Kaizen Discovery Corp – No note of measures taken to ensure sample security.</li> <li>2003/2005 diamond drilling completed by Coronation Minerals - Samples were stored in self-locking, cable tied sample bags, before being batched into rice sacks, which were also cable tied. Transport from the remote field camp to the laboratory was completed by freighting services.</li> </ul>
<b>Audits or reviews</b>	<ul style="list-style-type: none"> <li><i>The results of any audits or reviews of sampling techniques and data.</i></li> </ul>	<ul style="list-style-type: none"> <li>No independent site visit or audit/review of the procedures/assay results has been conducted.</li> </ul>

## Section 2: Reporting of Exploration Results

(Criteria listed in the preceding section also apply to this section)

Criteria	JORC Code explanation	Commentary
<b>Mineral tenement and land tenure status</b>	<ul style="list-style-type: none"> <li><i>Type, reference name/number, location and ownership including agreements or material issues with third parties such as joint ventures, partnerships, overriding royalties, native title interests, historical sites, wilderness or national park and environmental settings.</i></li> <li><i>The security of the tenure held at the time of reporting along with any known impediments to obtaining a licence to operate in the area.</i></li> </ul>	<ul style="list-style-type: none"> <li>The Rae Copper Project is made up of 93 mineral claims in 3 blocks and 1 mineral lease in the Kitikmeot region of Nunavut, northern Canada. The claims and lease cover a total area of 1228 km<sup>2</sup>.</li> <li>All mineral claims are in good standing.</li> <li>In November 2024 White Cliff Minerals acquired mineral lease L-2797 from Victoria Copper Inc. granting 100% ownership of the project. Victoria Copper Inc. retained a 1% net smelter royalty (NSR) over production from the lease. White Cliff Minerals can buy back 50% of the NSR for CAD \$1 million in cash and has right of first refusal with respect to the sale of the remaining 50% of the NSR (0.5% NSR).</li> <li>White Cliff Minerals is in possession of a type B water license issued by the Nunavut Water Board and a Class A Land Use Permit granted by the Crown-Indigenous Relations and Northern Affairs Canada allowing the completion of exploration drilling and camp establishment.</li> <li>White Cliff Minerals have obtained permission from the Kitikmeot Inuit Association to conduct exploration on this property.</li> </ul>



Criteria	JORC Code explanation	Commentary
Exploration done by other parties	<ul style="list-style-type: none"> <li>Acknowledgment and appraisal of exploration by other parties.</li> </ul>	<ul style="list-style-type: none"> <li>Tools and idols, made from native copper found in the Coppermine Region have been worked and traded by the local Inuit population going back centuries.</li> <li>The area first came to the attention of European and English explorers in the 17<sup>th</sup> century. In 1771 Samuel Hearne reported finding a four-pound native copper nugget at surface.</li> <li>The Coppermine River area was first staked in 1929 and continued slowly until 1966 when, due to the discovery of several high-grade surface deposits of copper. By late 1967 over 40,000 claims were lodged by more than 70 different companies (E.D. Kindle, 1972). In his report, Kindle locates and gives a brief description of over 80 high grade copper occurrences.</li> <li>The largest copper deposit in the area is called Area 47 or the DOT 47 Lode in a vertical, tabular body 1,500 feet long and 35 feet wide along one of the faults of the Teshierpi fault zone (Kindle, 1972). The DOT 47 deposit was estimated to host 4,162,000 tons grading 2.96 % copper remaining open at depth and to the southwest. The definition of this deposit by Coppermine River Limited marked the largest exploration effort to date.</li> <li>Mapping and exploration in the area were conducted over several campaigns by regional workers and individual companies until 1970, when the area was mapped in detail by W.A. Barager and J.A. Donaldson. During this time, Barager conducted a litho-geochemical study of the Coppermine River basalts. E.D. Kindle followed this work and produced the first major collaboration of mineralisation, geology, and geologic history in 1972. Following this, Ross and Kerans (1989) mapped Middle Proterozoic sediments of the Hornby Bay and Dismal Lake Groups to the south and west of the region.</li> <li>Exploration and development persisted sporadically between 1990 - 2010, when companies started to utilise geophysics at the Area 47 and Muskox Intrusion to the southeast of the project area, the latter of which witnessed drilling for several years.</li> <li>Mineral claims in the region continued to lapse because of depressed economic conditions, until most of the Coppermine area was free and available for staking.</li> <li>Exploration 2013-2015 was conducted by Tundra Copper Corporation, with work from 2013-2014 detailed in Assessment Report 086024. The work completed included geological mapping, rock chip sampling and later diamond drilling in 2015 consisting of 2060 m.</li> <li>Of importance is the result of a regional drilling program, testing the basal portion of the Rae Group Sediments. A series of 7 vertical drillholes tested the Rae Group – Coppermine River Group unconformity, targeting sediment-hosted copper deposits for a total of 1949 m. The final drillhole of the program, furthest to the west, drillhole CP15_DD009 intercepted 29 m at 0.57 % Cu from 197 m depth and noted a zonation of copper sulphides of chalcocite-bornite-chalcopyrite upwards from the unconformity. This interval and zonation of copper sulphides is a significant proof of concept for sediment hosted copper deposits within the Rae Group, possessing similarities with the Central African Copperbelt and Kupferschiefer districts.</li> </ul>
Geology	<ul style="list-style-type: none"> <li>Deposit type, geological setting and style of mineralisation.</li> </ul>	<ul style="list-style-type: none"> <li>The Rae Copper Project is located within the north dipping Coppermine Homocline. It unconformably rests on the metamorphic and plutonic rocks of the ca. 1.88-1.84 Ga Wopmay Orogen (Barager et al, 1996). The Hornby Bay Group consists of continental sedimentary and volcanic strata overlain by transitional marine sedimentary rocks of the Dismal Lakes Group. The Coppermine River Group overlie these older sedimentary groups and form a thick sequence of continental flood basalts capped by red bed sandstones. A further unconformity is present where the Rae Group, a sedimentary package sits above the Coppermine River Group, defining a return to marine conditions with a possible age of sedimentation onset of 1070 Ma (Rainbird et al, 2020). Crosscutting the Coppermine River Group and overlying Rae Group are the Coronation Sills, gabbroic composition and believed to have been emplaced at 723 +/- 4Ma (Heaman et al, 1992).</li> <li>Mineralisation in the Rae Copper Project comprises a variety of styles within both the Copper Creek Formation basalts and the overlying basal Rae Group sediments. Chalcocite dominant vein and breccia systems, flow top</li> </ul>

Criteria	JORC Code explanation	Commentary
		replacements and sedimentary hosted stratiform copper. Specifically, the reduced-facies sub type of sediment hosted copper deposits, akin to the Central African Copperbelt.
<b>Drill hole Information</b>	<ul style="list-style-type: none"> <li>A summary of all information material to the understanding of the exploration results including a tabulation of the following information for all Material drill holes: <ul style="list-style-type: none"> <li>easting and northing of the drill hole collar</li> <li>elevation or RL (Reduced Level – elevation above sea level in metres) of the drill hole collar</li> <li>dip and azimuth of the hole, down hole length and interception depth, hole length.</li> </ul> </li> <li>If the exclusion of this information is justified on the basis that the information is not Material and this exclusion does not detract from the understanding of the report, the Competent Person should clearly explain why this is the case.</li> </ul>	<ul style="list-style-type: none"> <li>Collar information for the relevant drillholes is included in table form in this release.</li> </ul>
<b>Data aggregation methods</b>	<ul style="list-style-type: none"> <li>In reporting Exploration Results, weighting averaging techniques, maximum and/or minimum grade truncations (e.g., cutting of high grades) and cut-off grades are usually Material and should be stated.</li> <li>Where aggregate intercepts incorporate short lengths of high-grade results and longer lengths of low-grade results, the procedure used for such aggregation should be stated and some typical examples of such aggregations should be shown in detail.</li> <li>The assumptions used for any reporting of metal equivalent values should be clearly stated.</li> </ul>	<ul style="list-style-type: none"> <li>Reported copper intervals were calculated using a length weighted average. No cutting of high grades or cut off grades have been used in the reporting of drilled thickness intervals.</li> <li>A cut of grade of 2% Cu was utilised for the historic estimate.</li> <li>No data aggregation techniques have been applied.</li> <li>No metal equivalent values are being used.</li> </ul>
<b>Relationship between mineralisation widths and intercept lengths</b>	<ul style="list-style-type: none"> <li>These relationships are particularly important in the reporting of Exploration Results.</li> <li>If the geometry of the mineralisation with respect to the drill hole angle is known, its nature should be reported.</li> <li>If it is not known and only the down hole lengths are reported, there should be a clear statement to this effect (e.g., 'down hole length, true width not known').</li> </ul>	<ul style="list-style-type: none"> <li>2025 RC drilling by White Cliff Minerals – Reported results are treated as drilled widths not true thicknesses. Mineralisation at Danvers is hosted within a breccia/vein system which strikes NE/SW with a variable dip to the NW inferred. Drilling completed with azimuth towards the SSE, perpendicular to the strike of the inferred mineralisation. Oblique intersections of the hole and the mineralisation is expected, and thus all reported intervals are drilled widths, not true thicknesses. More work will be required to understand the trend of mineralisation at Danvers and report true thicknesses.</li> <li>2015 Kaizen Discovery Corp – The downhole width is reported for CP15_DD009, which is interpreted to be very close to true width given the near horizontal orientation of sedimentary bedding which is controlling copper mineralisation. The vertical drillhole is fit for purpose.</li> <li>2003/2005 diamond drilling completed by Coronation Minerals - Downhole interval thicknesses are presented. At this stage true widths are not known. Holes drilled in 2003/2005 were inclined between -60 and -65 degrees and</li> </ul>

Criteria	JORC Code explanation	Commentary
		have variably oblique intersections with the interpreted mineralisation outline.
<b>Diagrams</b>	<ul style="list-style-type: none"> <li>Appropriate maps and sections (with scales) and tabulations of intercepts should be included for any significant discovery being reported These should include but not be limited to a plan view of drill hole collar locations and appropriate sectional views.</li> </ul>	<ul style="list-style-type: none"> <li>Location maps and sections provided within the release with relevant exploration information contained.</li> </ul>
<b>Balanced reporting</b>	<ul style="list-style-type: none"> <li>Where comprehensive reporting of all Exploration Results is not practicable, representative reporting of both low and high grades and/or widths should be practiced avoiding misleading reporting of Exploration Results.</li> </ul>	<ul style="list-style-type: none"> <li>All exploration results have been reported.</li> <li>The reporting of exploration results is considered balanced by the competent person.</li> </ul>
<b>Other substantive exploration data</b>	<ul style="list-style-type: none"> <li>Other exploration data, if meaningful, should be reported including geological observations; geophysical survey results; geochemical survey results; bulk samples – size and method of treatment; metallurgical test results; bulk density, groundwater, geotechnical and rock characteristics; potential deleterious or contaminating substances.</li> </ul>	<ul style="list-style-type: none"> <li>2,427 line-km of MobileMT airborne geophysics was completed during the 2024 field program at the Rae Copper Project. The survey was conducted by Expert Geophysics using an AS 350 B2 SD2 helicopter of Capital Helicopters. The survey lines were oriented E/W and spaced at 400m intervals, with tie lines running N/S and spaced 4000m apart. The average survey speed was 23m/s with a helicopter terrain clearance of 152m. The magnetometer was on average 81m above terrain and 62m for the EM sensor. Data was controlled for quality, interpolated and underwent 2D inversion, completed by Expert Geophysics.</li> </ul>
<b>Further work</b>	<ul style="list-style-type: none"> <li>The nature and scale of planned further work (e.g., tests for lateral extensions or depth extensions or large-scale step-out drilling).</li> <li>Diagrams clearly highlighting the areas of possible extensions, including the main geological interpretations and future drilling areas, provided this information is not commercially sensitive.</li> </ul>	<ul style="list-style-type: none"> <li>Drilling at the Rae Project is ongoing and will continue to test the Danvers target area, and the Hulk target for sediment hosted copper mineralisation.</li> <li>Further work may involve reassessment of the geophysics data provided by the 2024 MobileMT survey, using the drilling data and new subsurface knowledge to refine geophysical targets.</li> <li>A detailed surface sampling campaign will also be conducted when conditions allow, focusing on the basal Rae formation and the wider area around the Danvers deposit.</li> <li>Additional drilling will be planned throughout 2025 which will aid in delivering a maiden JORC compliant mineral resource estimate</li> </ul>

### Section 3: Estimation and Reporting of Mineral Resources

(Criteria listed in section 1, and where relevant in section 2, also apply to this section)

Criteria	JORC Code explanation	Commentary
<b>Database integrity</b>	<ul style="list-style-type: none"> <li>Measures taken to ensure that data has not been corrupted by, for example, transcription or keying errors, between its initial collection and its use for Mineral Resource estimation purposes.</li> <li>Data validation procedures used.</li> </ul>	<ul style="list-style-type: none"> <li>No information is available regarding the transcription of data from data collection to estimation given the historic nature of the estimate.</li> <li>Certain drillhole locations, included in the historic estimate were verified by Coronation Minerals' personnel in 2003/2005.</li> </ul>



Criteria	JORC Code explanation	Commentary
Site visits	<ul style="list-style-type: none"> <li>Comment on any site visits undertaken by the Competent Person and the outcome of those visits.</li> <li>If no site visits have been undertaken indicate why this is the case.</li> </ul>	<ul style="list-style-type: none"> <li>The JORC Competent Person has not visited the site which hosts the historic estimation as the project has been recently acquired.</li> </ul>
Geological interpretation	<ul style="list-style-type: none"> <li>Confidence in (or conversely, the uncertainty of) the geological interpretation of the mineral deposit.</li> <li>Nature of the data used and of any assumptions made.</li> <li>The effect, if any, of alternative interpretations on Mineral Resource estimation.</li> <li>The use of geology in guiding and controlling Mineral Resource estimation.</li> <li>The factors affecting continuity both of grade and geology.</li> </ul>	<ul style="list-style-type: none"> <li>The project is an epigenetic, fault breccia hosted copper-silver deposit. It also hosts intervals of replacement style mineralization within vesicular flow tops of basalt flows. The deposit style is well recognized within the Copper Creek Basalt Formation.</li> <li>Due to the historic nature of the estimate and lack of review of drill core or other evidence an assumption is made that the assay and geological interpretation is fit for purpose within the historic estimate.</li> <li>Alternative interpretations of the deposit style are not believed to have altering effects on the historic estimation.</li> <li>The orientation of the main breccia body, in line with the major NE/SW trending Teshierpi Fault Zone guided the orientation of historic drilling which was used during the historic estimate. Knowledge of the shallow NE dipping basalt flows informed the drilling and estimation of the flow-top replacement style mineralization.</li> <li>Continuity in the breccia and host structure depend on the intersection of major and minor faults and fracture zones. Continuity of grade within the flow top replacement bodies is dependent on the primary porosity of the basalt flow tops and their proximity to feeder structures/the main breccia zone.</li> </ul>
Dimensions	<ul style="list-style-type: none"> <li>The extent and variability of the Mineral Resource expressed as length (along strike or otherwise), plan width, and depth below surface to the upper and lower limits of the Mineral Resource.</li> </ul>	<ul style="list-style-type: none"> <li>The historic estimate covers an average of 40 to 45 ft width with local swelling to over 100 ft. The top of the body appears to have a horizontal attitude along strike with the bottom of defined zones gently plunging to the southwest. The estimate covered 1528 ft strike length with a vertical depth of 600 ft.</li> </ul>
Estimation and modelling techniques	<ul style="list-style-type: none"> <li>The nature and appropriateness of the estimation technique(s) applied and key assumptions, including treatment of extreme grade values, domaining, interpolation parameters and maximum distance of extrapolation from data points. If a computer assisted estimation method was chosen include a description of computer software and parameters used.</li> <li>The availability of check estimates, previous estimates and/or mine production records and whether the Mineral Resource estimate takes appropriate account of such data.</li> <li>The assumptions made regarding recovery of by-products.</li> <li>Estimation of deleterious elements or other non-grade variables of economic significance (e.g. sulphur for acid mine drainage characterisation).</li> <li>In the case of block model interpolation, the block size in relation to the average sample spacing and the search employed.</li> <li>Any assumptions behind modelling of selective mining units.</li> <li>Any assumptions about correlation between</li> </ul>	<ul style="list-style-type: none"> <li>The historic estimate did not use computer software and was completed using plan view and 2D sections along completed drill fences. The estimation technique is deemed appropriate for the historic nature of the estimate.</li> <li>The areas within the outlined blocks were calculated by taking 3 measurements of each block with a planimeter and averaging the readings.</li> <li>Drill-indicated reserves were computed from specific measurements based on the following: <ul style="list-style-type: none"> <li>a) The length of copper bearing diamond drill core intersections</li> <li>b) The weighted average grade of the above intersections</li> <li>c) The area of influence of diamond drill core intersections (see No. 5)</li> <li>d) The horizontal projection of the area of influence (see No. 6)</li> <li>e) A calculated tonnage factor (see No. 2)</li> <li>f) A total of 30,337 feet of diamond drilling on the 47 Zone and its southwest extension with the holes on the average 100 feet apart on section</li> </ul> </li> <li>Inferred reserves were calculated in the same manner as indicated reserves but are based on evidence of continuity as suggested by diamond drilling and/or longitudinal projection</li> <li>The area of grade influence of each diamond drill hole intersection on a particular section was extended one half-way to adjacent holes on the same section of 50 feet beyond the top and bottom hole unless geological evidence suggested that longer projections were justified</li> <li>The horizontal distance of grade and area projection was taken as half the distance to adjoining sections. The ore was projected beyond the last sections on each end of the deposit a distance equal to half the distance to the last adjoining section</li> </ul>

Criteria	JORC Code explanation	Commentary
	<p><i>variables.</i></p> <ul style="list-style-type: none"> <li><i>Description of how the geological interpretation was used to control the resource estimates.</i></li> <li><i>Discussion of basis for using or not using grade cutting or capping.</i></li> <li><i>The process of validation, the checking process used, the comparison of model data to drill hole data, and use of reconciliation data if available.</i></li> </ul>	<ul style="list-style-type: none"> <li>The grade for the inferred reserve blocks was calculated from the average grade or grades of the adjoining block or blocks</li> <li>The elevations to which reserves were projected on each section were determined from a longitudinal projection of the orebody</li> <li>On both plan and sections of copper bearing diamond drill holes straight wall ore limits are assumed to prevail between each drill intersection</li> <li>There are no available check estimates.</li> <li>The by-product silver was estimated for each 10% contained copper there is approximately 1 oz of silver. This was determined by metallurgical testwork on diamond drill core samples conducted by Lakefield Research, silver was not routinely assayed during drilling and thus not included in the estimate.</li> <li>The geological model, created in 2D sections along drill fences influenced the estimate through creation of blocks controlled by either the breccia zone or flow top replacement, which correlated to the drillhole intersections. These blocks were then combined per section.</li> <li>A 2% copper cut of grade was applied.</li> </ul>
<b>Moisture</b>	<ul style="list-style-type: none"> <li><i>Whether the tonnages are estimated on a dry basis or with natural moisture, and the method of determination of the moisture content.</i></li> </ul>	<ul style="list-style-type: none"> <li>The moisture content for tonnage calculations is unknown. No note of dry basis estimation is recorded, and given the historic nature of the estimate it is assumed a natural moisture basis was used.</li> </ul>
<b>Cut-off parameters</b>	<ul style="list-style-type: none"> <li><i>The basis of the adopted cut-off grade(s) or quality parameters applied.</i></li> </ul>	<ul style="list-style-type: none"> <li>A 2 % copper cut-off grade was included in the estimate.</li> </ul>
<b>Mining factors or assumptions</b>	<ul style="list-style-type: none"> <li><i>Assumptions made regarding possible mining methods, minimum mining dimensions and internal (or, if applicable, external) mining dilution. It is always necessary as part of the process of determining reasonable prospects for eventual economic extraction to consider potential mining methods, but the assumptions made regarding mining methods and parameters when estimating Mineral Resources may not always be rigorous. Where this is the case, this should be reported with an explanation of the basis of the mining assumptions made.</i></li> </ul>	<ul style="list-style-type: none"> <li>Mining parameters detailed in this section were taken from the report “A Preliminary Feasibility Report on the Hope Lake Copper Deposit, Mackenzie. Assessment Report INAC (Exploration Report), Bracken, J M; Seasor, R W; Neal, H E; Leslie, C A; Pullen, T C. April 1, 1968”. The report defines a 1000 – 1500 ton per day plant size operating 350 days per year. The mining method is described as consisting of open stope for the vertical breccia body and room and pillar methods through the flow top replacement bodies.</li> <li>A dilution of 10% was accounted for in the historic estimate, adding in material calculated to be 0.6% Cu.</li> <li>A case for open pit mining was not pursued in any detail.</li> </ul>
<b>Metallurgical factors or assumptions</b>	<ul style="list-style-type: none"> <li><i>The basis for assumptions or predictions regarding metallurgical amenability. It is always necessary as part of the process of determining reasonable prospects for eventual economic extraction to consider potential metallurgical methods, but the assumptions regarding metallurgical treatment processes and parameters made when reporting Mineral Resources may not always be rigorous. Where this is the case, this should be reported with</i></li> </ul>	<ul style="list-style-type: none"> <li>The use of the term “ore” in the following section is not taken by White Cliff Minerals to imply economic extraction of metal contents, however, is used to describe the processing outlined in the referenced report. The completion of additional work and evaluation may not define JORC compliant resources/reserves. The report “A Preliminary Feasibility Report on the Hope Lake Copper Deposit, Mackenzie. Assessment Report INAC (Exploration Report), Bracken, J M; Seasor, R W; Neal, H E; Leslie, C A; Pullen, T C. April 1, 1968” defines a mining scenario of a 1500 ton per day mill. The report notes similarities of the “ore” with that treated at Roan Antelope in northern Rhodesia (operated since 1931 to date of 1968 report) with the successful operations at Mufulira and Roan Antelope adding support and confidence to the present preliminary design. Testwork completed by Lakefield Research and detailed in the 1968 Preliminary Feasibility Report conducted 43 bench scale grinding and flotation tests on 5 composites</li> </ul>

Criteria	JORC Code explanation	Commentary
	<i>an explanation of the basis of the metallurgical assumptions made</i>	from 1967 drillcore totalling 2462 feet of material and found no other metals apart from copper and silver in significant quantities. Metallurgical testwork outlined 55-66% copper concentrates with copper recoveries of 85-95% depending on the grind and flowsheet. Silver content in the concentrate varies from 4.5 to 5.5 oz/t with recoveries in the range of 82 – 95% Ag. The concentrate is chiefly chalcocite with considerable bornite, minor chalcopyrite, covellite and pyrite. Very little to no pyrrhotite has been detected. An excerpt from the report states “The chalcocite and bornite are readily floated with preliminary indications that a coarse high-grade concentrate can be removed after the rod mill or ball mill. The very low pyrite and pyrrhotite content helps the flotation and does not require a depressant for these sulphides. Flotation time is considered normal to fast for this ore”. A processing flowsheet is presented with the following components, conveying of ore to primary jaw crusher, followed by crushing to a fine ore storage unit, grinding of ore to 50% minus 325 mesh before flotation by ball/rod mills, with possibility of a coarse copper concentrate “scalp off”, 2 banks of floatation equipment each consisting of 4 rougher and 5 scavenger cells before movement into thickening and filtering systems.
<b>Environmental factors or assumptions</b>	<ul style="list-style-type: none"> <li>Assumptions made regarding possible waste and process residue disposal options. It is always necessary as part of the process of determining reasonable prospects for eventual economic extraction to consider the potential environmental impacts of the mining and processing operation. While at this stage the determination of potential environmental impacts, particularly for a greenfields project, may not always be well advanced, the status of early consideration of these potential environmental impacts should be reported. Where these aspects have not been considered this should be reported with an explanation of the environmental assumptions made.</li> </ul>	<ul style="list-style-type: none"> <li>The historic estimate and associated pre-feasibility study notes the use of a tailings thickener, which will allow for recirculation of process water, limiting required extraction from nearby water sources. An area, to the north of the deposit was highlighted for use as a tailings area within a natural depression.</li> <li>The deposit is dominated by chalcocite and bornite, zoning outwards to chalcopyrite and pyrite sulphide assemblages. Given the acid generating potential of pyrite when exposed to the atmosphere this should be mitigated when designing waste storage (tailings) facilities.</li> <li>The arctic environment, and presence of well-established permafrost will also be accounted for in future studies.</li> </ul>
<b>Bulk density</b>	<ul style="list-style-type: none"> <li>Whether assumed or determined. If assumed, the basis for the assumptions. If determined, the method used, whether wet or dry, the frequency of the measurements, the nature, size and representativeness of the samples.</li> <li>The bulk density for bulk material must have been measured by methods that adequately account for void spaces (vugs, porosity, etc), moisture and differences between rock and alteration zones within the deposit.</li> <li>Discuss assumptions for bulk density estimates used in the evaluation process of the different materials.</li> </ul>	<ul style="list-style-type: none"> <li>Bulk density measurements were conducted on historic drill core samples during metallurgical testwork completed by Lakefield Research. The number of drill core samples tested and their locations within the deposit or representativeness is unknown.</li> <li>A bulk density of 11 sq ft per ton was used.</li> <li>No details are available regarding the method of determination of the bulk density value. It is unknown if vugs, porosity or other void spaces were accounted for.</li> </ul>



Criteria	JORC Code explanation	Commentary
<b>Classification</b>	<ul style="list-style-type: none"> <li><i>The basis for the classification of the Mineral Resources into varying confidence categories.</i></li> <li><i>Whether appropriate account has been taken of all relevant factors (i.e. relative confidence in tonnage/grade estimations, reliability of input data, confidence in continuity of geology and metal values, quality, quantity and distribution of the data).</i></li> <li><i>Whether the result appropriately reflects the Competent Person's view of the deposit</i></li> </ul>	<ul style="list-style-type: none"> <li>The historic estimate was classified as ore reserves comprising indicated and inferred resources. These are non JORC compliant terms and White Cliff Minerals is not treating the estimate as a current JORC compliant resource estimate.</li> <li>The estimate is classified as historic, non JORC compliant.</li> </ul>
<b>Audits or reviews</b>	<ul style="list-style-type: none"> <li><i>The results of any audits or reviews of Mineral Resource estimates.</i></li> </ul>	<ul style="list-style-type: none"> <li>No official/independent audits or reviews of the historic estimate have been completed. White Cliff Minerals has conducted proof reading and cross-referencing data where possible to minimize transcription errors when reporting details of the historic estimate.</li> </ul>
<b>Discussion of relative accuracy/confidence</b>	<ul style="list-style-type: none"> <li><i>Where appropriate a statement of the relative accuracy and confidence level in the Mineral Resource estimate using an approach or procedure deemed appropriate by the Competent Person. For example, the application of statistical or geostatistical procedures to quantify the relative accuracy of the resource within stated confidence limits, or, if such an approach is not deemed appropriate, a qualitative discussion of the factors that could affect the relative accuracy and confidence of the estimate.</i></li> <li><i>The statement should specify whether it relates to global or local estimates, and, if local, state the relevant tonnages, which should be relevant to technical and economic evaluation. Documentation should include assumptions made and the procedures used.</i></li> <li><i>These statements of relative accuracy and confidence of the estimate should be compared with production data, where available.</i></li> </ul>	<ul style="list-style-type: none"> <li>The method of estimation is deemed appropriate for the historic nature of the estimate.</li> <li>The weighted averaging of copper in drillhole intersections is well established and the resulting estimation is constrained by the geology and mineralisation with both the breccia zone and flow top replacements.</li> <li>Given the historic nature of the exploration work which informed the historic estimate the drill core has not been viewed by the Competent Person and thus not been re-assayed or validated at this time.</li> <li>The assay procedures are also unknown, with details of the detection limits and digestion efficiency (partial or total digestion) unknown, which may influence the copper assay results. No standards, blanks or field duplicates are noted to have been included in the sample stream which generated the assays included in the estimate, however, check assays are noted to have been completed by a second laboratory.</li> <li>The historic nature of the estimate can only be deemed accurate through the re-drilling of previously reported holes. Further exploration work would include the industry standard diamond and/or reverse circulation methods with a robust quality control program of blanks, standards and duplicates inserted into the sample stream for assay. Initial work would aim to confirm the geological model outlined in historic sections and through twinned holes understand the difference in historically reported intercepts and modern assay results. Bulk density measurements would be taken during diamond drilling activities, covering both mineralisation and host rock/alteration domains for inclusion in possible future resource estimations. This would increase the confidence in the historic results which informed the historic estimate where a comparison of modern and historic data/results can be completed.</li> <li>Verification work is planned to commence in 2025, and White Cliff Minerals is in possession of the required funding to commence this work.</li> </ul>