

BARLEE GOLD PROJECT

WESTERN AUSTRALIA



NOVEMBER 2009

COMPANY OVERVIEW

BOARD OF DIRECTORS:

Chairman	Paul Lloyd
Managing Director	Darryl Harris
Non Exec Director	Matthew Egan
Consult Geologist	Lyle Thorne

SHARE INFORMATION:

(30 June 2009)

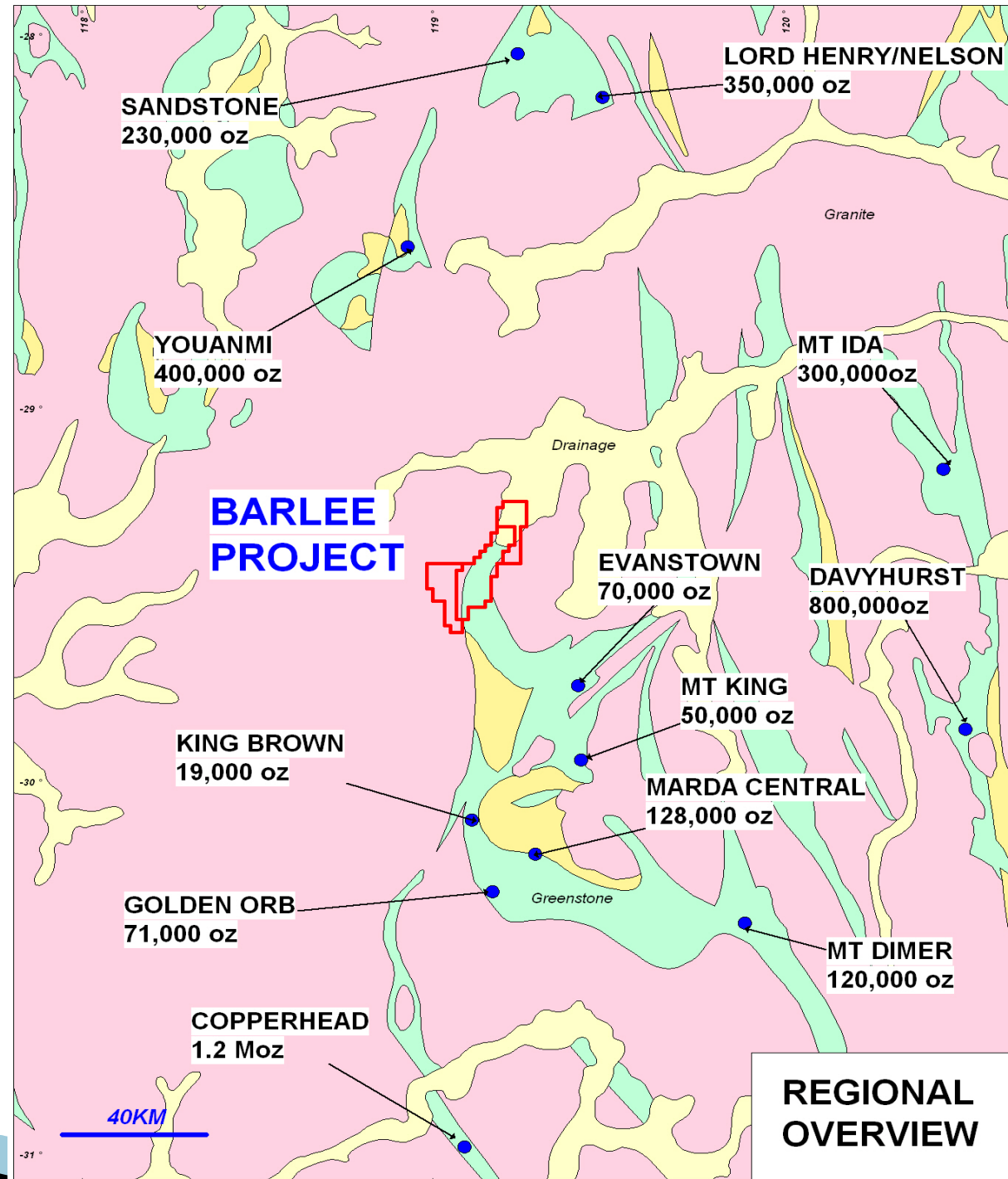
ASX Codes:	BCN, BCNOA, BCNO
Cash at Hand:	\$5,000,000
Shares on Issue BCN:	587,259,054
Current Market Cap:	\$17.5 million @ 2.7 cents
Listed Options	
BCNOA (Aug 2010):	229,712,690 @ 1c
BCNO (Aug 2010):	16,587,934 @ 20c
Unlisted Options	
(May 2011):	6,000,000 @ 20c
(Aug 2010):	45,283,580 @ 30c

CORPORATE GROWTH STRATEGY

- **Single project focus**
- **Small, experienced management team**
- **Expedite near term resource increases at the Barlee Gold Project**
- **To become an Australian gold producer in a known mineralised belt**
- **Regional acquisitions**

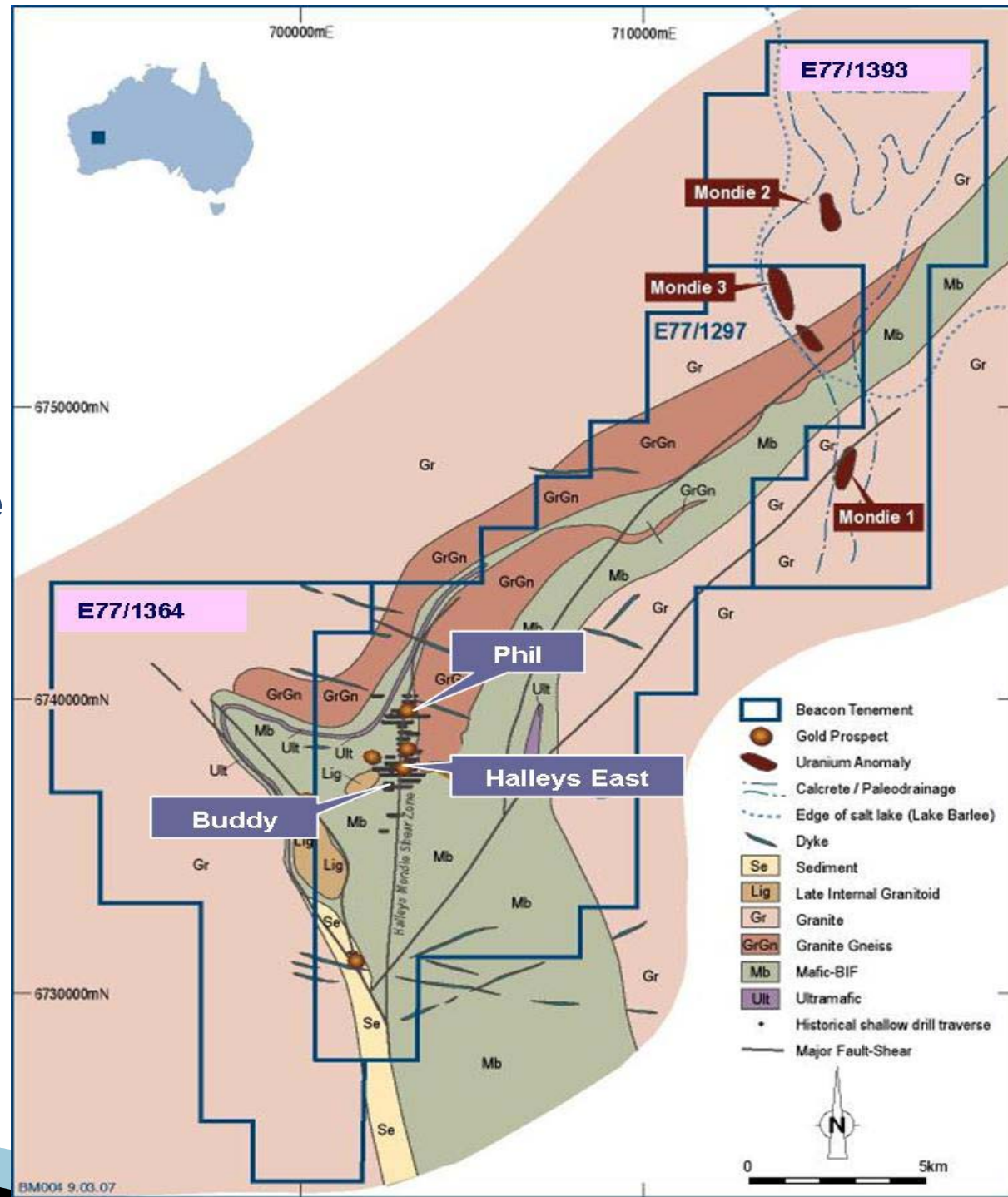
PROJECT OVERVIEW

- Three contiguous Exploration Licenses with combined area in excess of 300 km²
- BCN holds 100% interest in E77/1364 & E77/1392 and 80% interest in E77/1297
- Under explored - only 10 km² area drilled within project area
- Shallow drilling - only 5% of all holes drilled >100 m depth
- Significant, shallow RC results achieved to date
- Aggressive regional exploration program



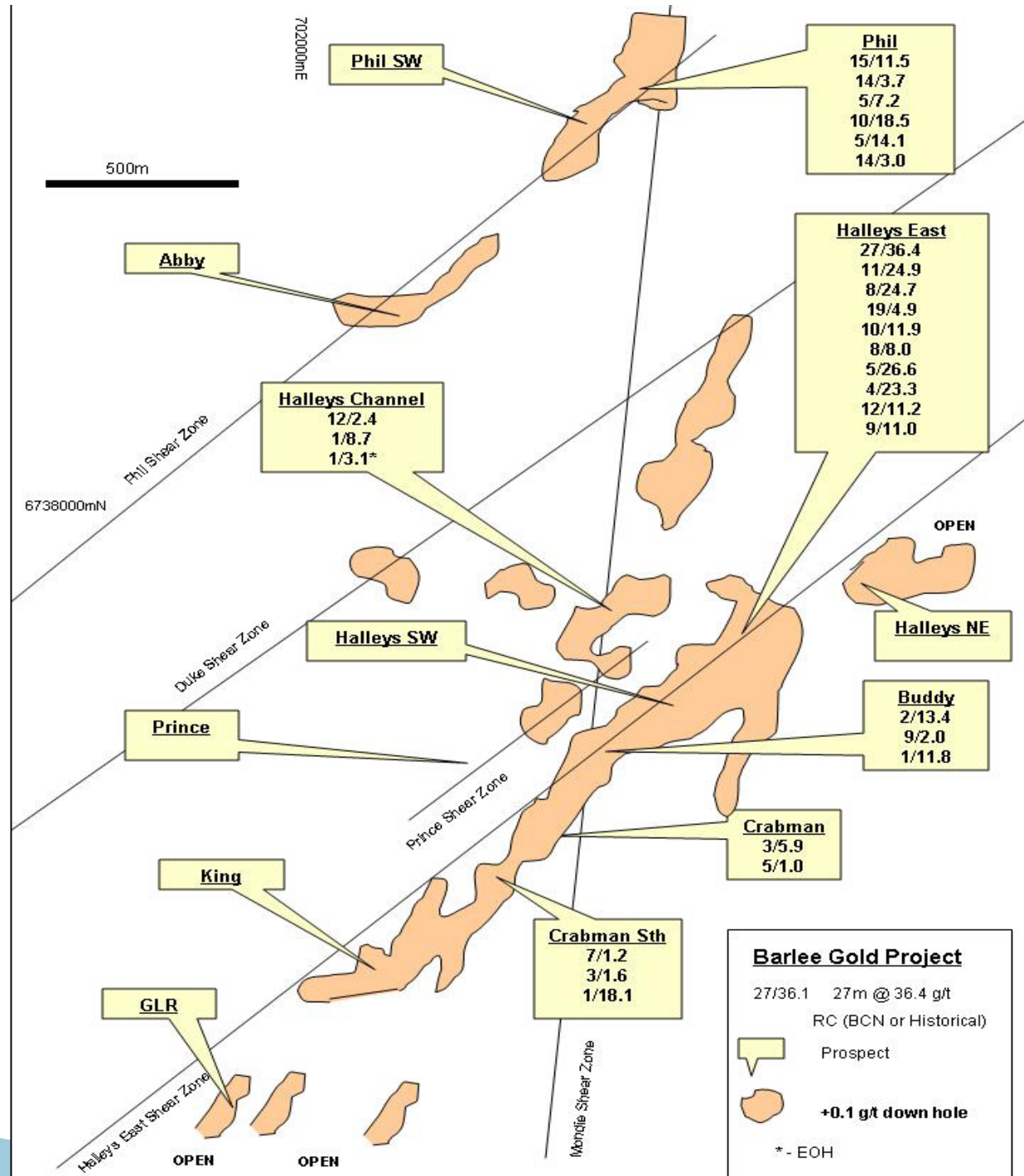
REGIONAL GEOLOGY

- Regional historic production provides strong opportunities
- Easily accessible in North Yilgarn greenstone belt, Western Australia
- Large unexplored greenstone belt
- Shallow depth, high grade gold mineralisation already encountered
- Mineralisation open at depth and along strike
- Large scale target potential

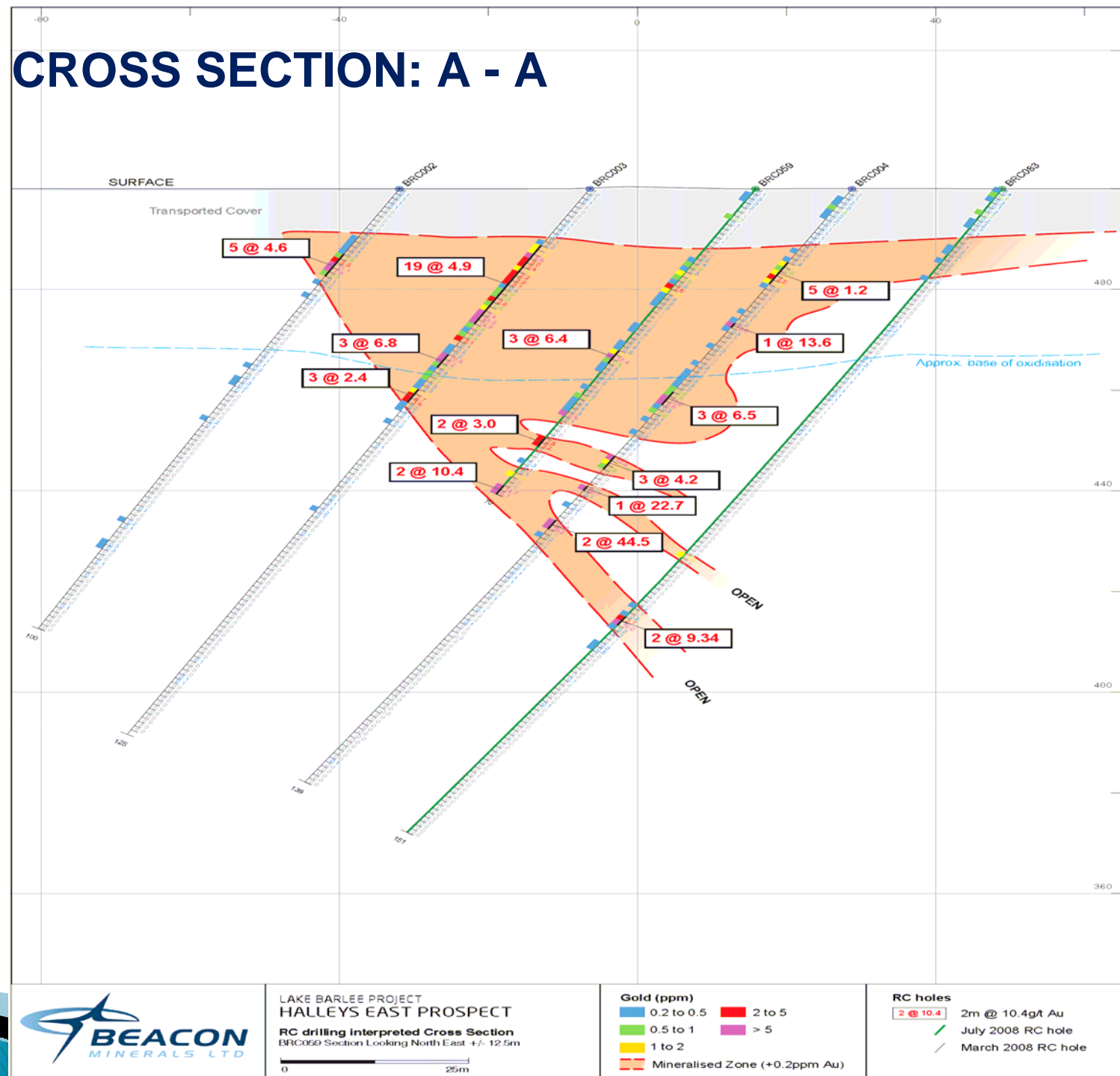


BARLEE – RESULTS

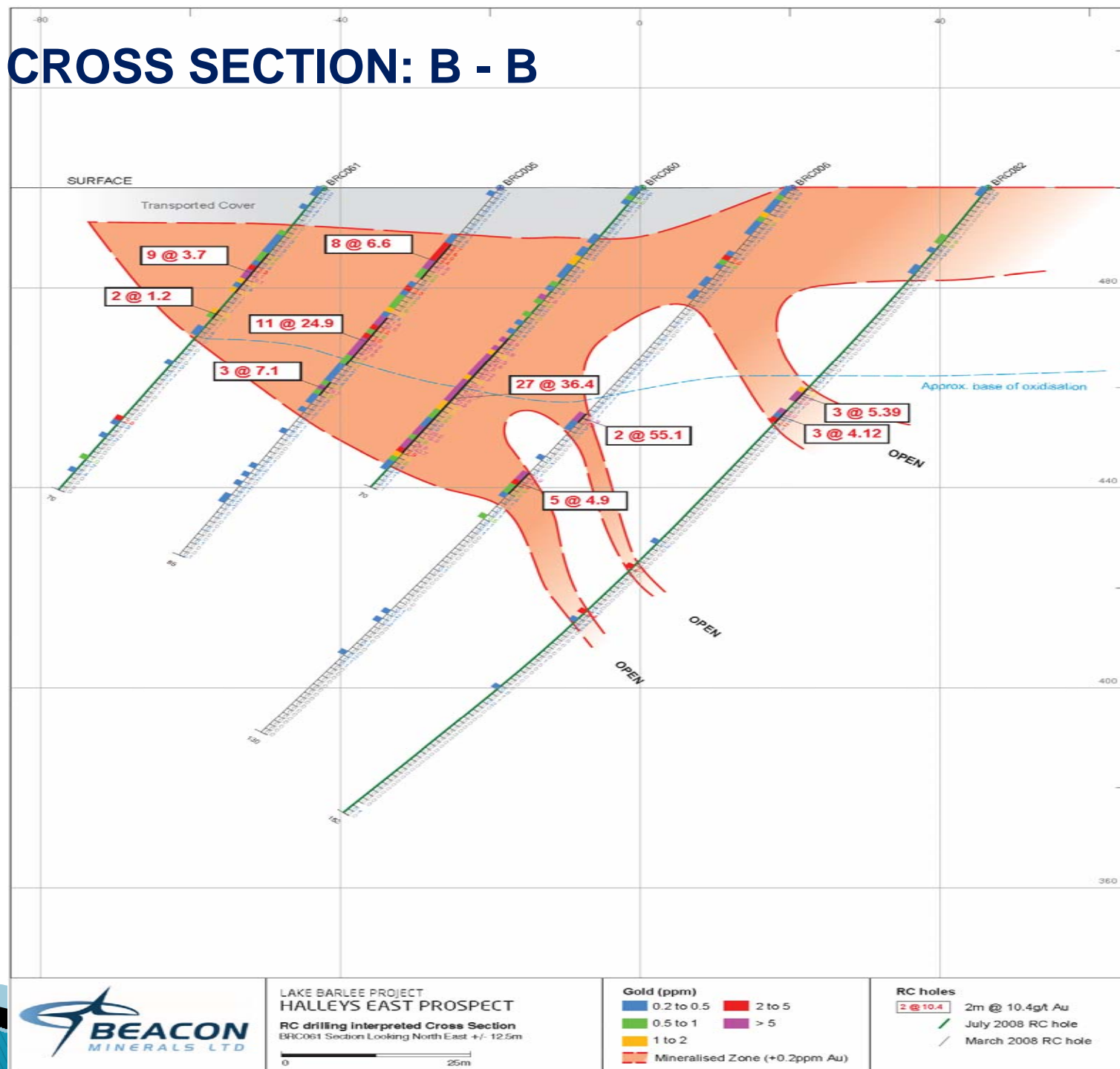
- Initial focus to be on 2.5km of mineralised strike along the Halleys Shear Zone
- Encouraging RC drilling results at Halleys East, including
 - 27 m @ 35.4 g/t Au
 - 11 m @ 24.9 g/t Au
 - 10 m @ 11.9 g/t Au
- November drilling program includes;
 - 4,000 m RC drilling
 - 6,000 m RAB drilling
- Initial JORC compliant resource being completed by end November for Halleys East



HALLEYS EAST CROSS SECTION: A - A



HALLEYS EAST CROSS SECTION: B - B

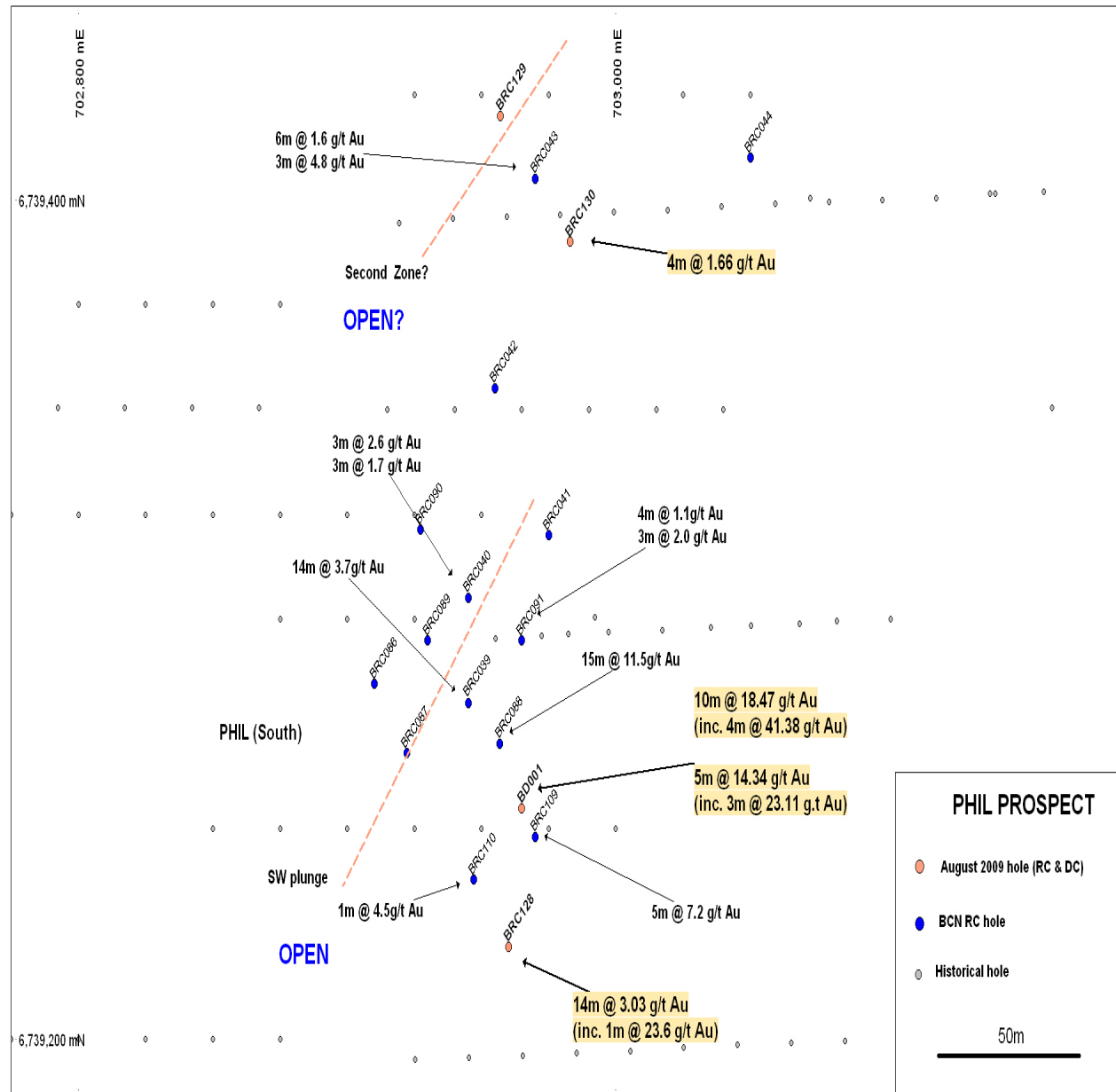


ONGOING DRILL PROGRAMS

➤ Further definition RC drilling of existing targets and extension along the highly prospective Halleys East Shear Zone

➤ In fill RAB drill testing of geochemical anomalies between known mineralised zones

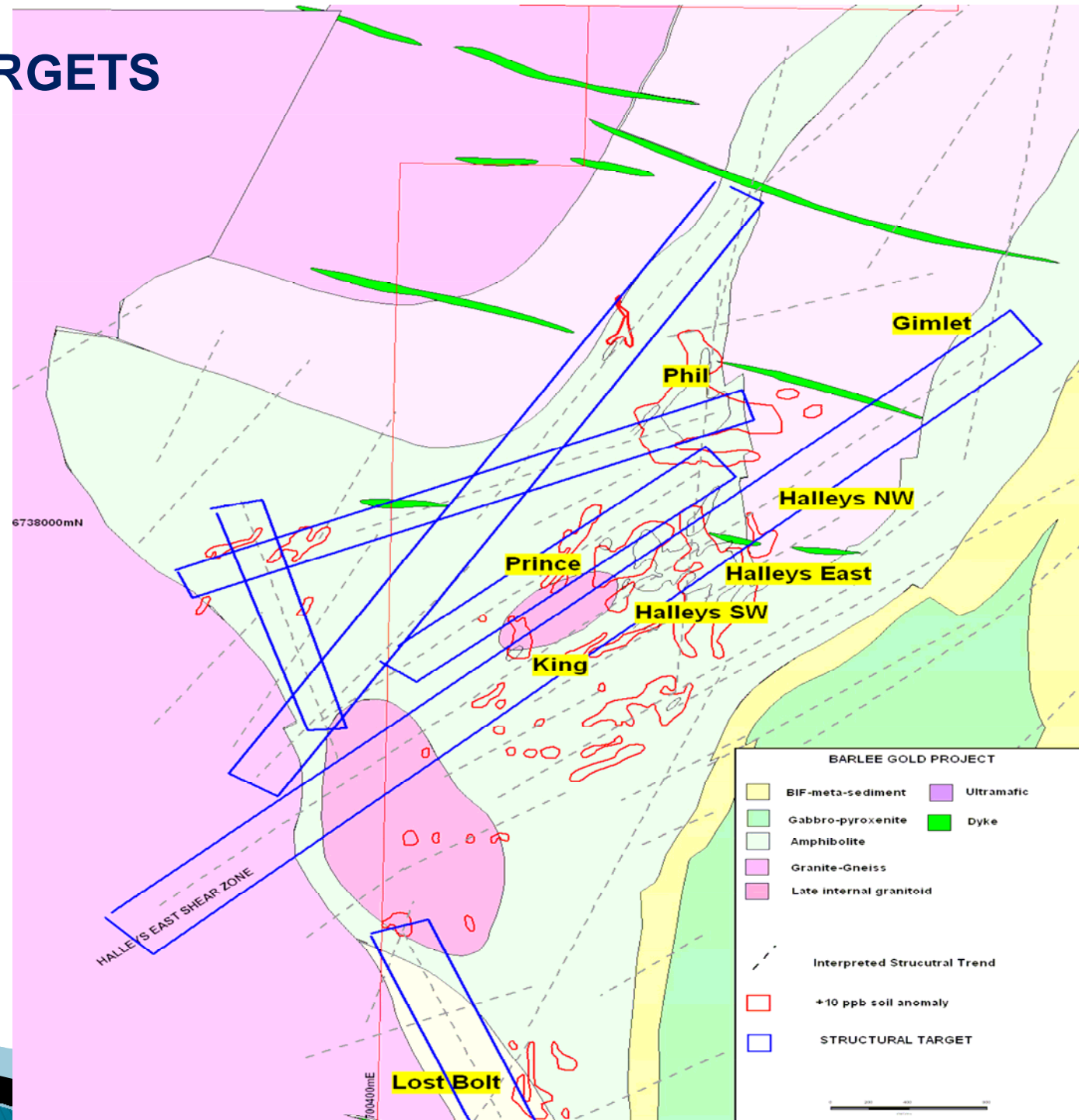
➤ Regional RAB drill testing of identified priority targets defined by aeromag survey and soil geochemistry

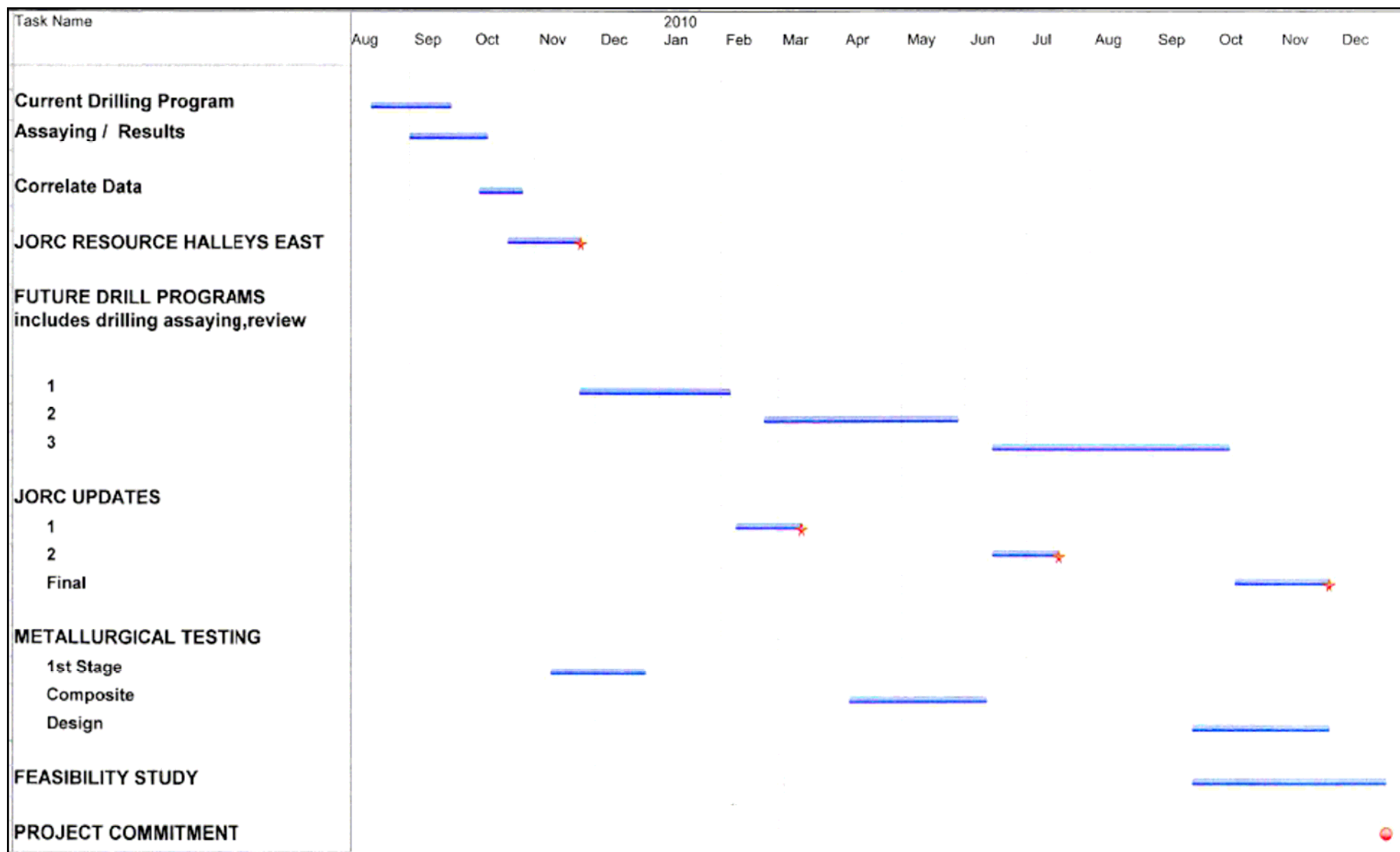


REGIONAL DRILL TARGETS

Geophysical Data Review completed:

- 23 Regional drill ready targets identified, including 6 high priority targets
- Extensions to known mineralised structures along Halleys East Shear Zone and other untested NE structural trends identified
- NE structural trends interpreted as important controls to gold mineralisation





BARLEE DEVELOPMENT SCHEDULE

DISCLAIMER

This presentation includes predictive information that is intended to be made as “forward-looking” within the safe harbor protections of the Private Securities Litigation Reform Act of 1995. Although the Company believes that its forward-looking information is based on reasonable assumptions, such information is subject to risks and uncertainties, which could cause materially different results.

It is not a disclosure document nor does it constitute the provision of financial product advice. None of Beacon Minerals Limited (“Beacon”), its related bodies corporate, officers, employees and advisors makes or gives any representation, warranty or guarantee in relation to this presentation (whether orally, in document form or in any form whatsoever) (the “Information”) to the recipient of this presentation (“Recipient”) or any of its related bodies corporate, officers, employees and advisors. The Information is provided expressly on the basis that the Recipient will carry out its own independent inquiries into the Information and make its own independent decisions about the affairs, financial position or prospects of Beacon. Beacon reserves the right to update/amend or supplement the Information at any time in its absolute discretion (without incurring any obligation to do so).

COMPETENT PERSONS STATEMENT

In accordance with Listing Rules 5.6 of the Australian Securities Exchange, the technical information contained in this report has been compiled by Mr. Darryl Harris, Managing Director of Beacon Minerals Ltd, and Mr. Lyle Thorne, an independent consultant.

Mr. Harris and Mr. Thorne are Members of the Australasian Institute of Mining and Metallurgy (AusIMM) and have the relevant experience with the mineralisation reported on to qualify as a Competent Person as defined by the Australasian Code for Reporting of Mineral Resources and Reserves. Mr. Harris and Mr. Thorne consent to the inclusion in the report of the matters based on the information in the form and context in which it appears.