

**Salanie**

**An Emerging High-Grade Gold Discovery**



November 2023

ASX:AON

ABN: 96 125 222 924



# Salanie – An Emerging High-Grade Gold Discovery

## 12km of Greenstone Trend

- Similar style and age to Western Australian gold deposits which host multi-million-ounce deposits
- Multiple parallel mineralised structures identified

## Historical gold mine (1942-1953) which mined 20g/t gold

- Untested by modern exploration for over 70 years

## Alluvial workings mapped over 12km

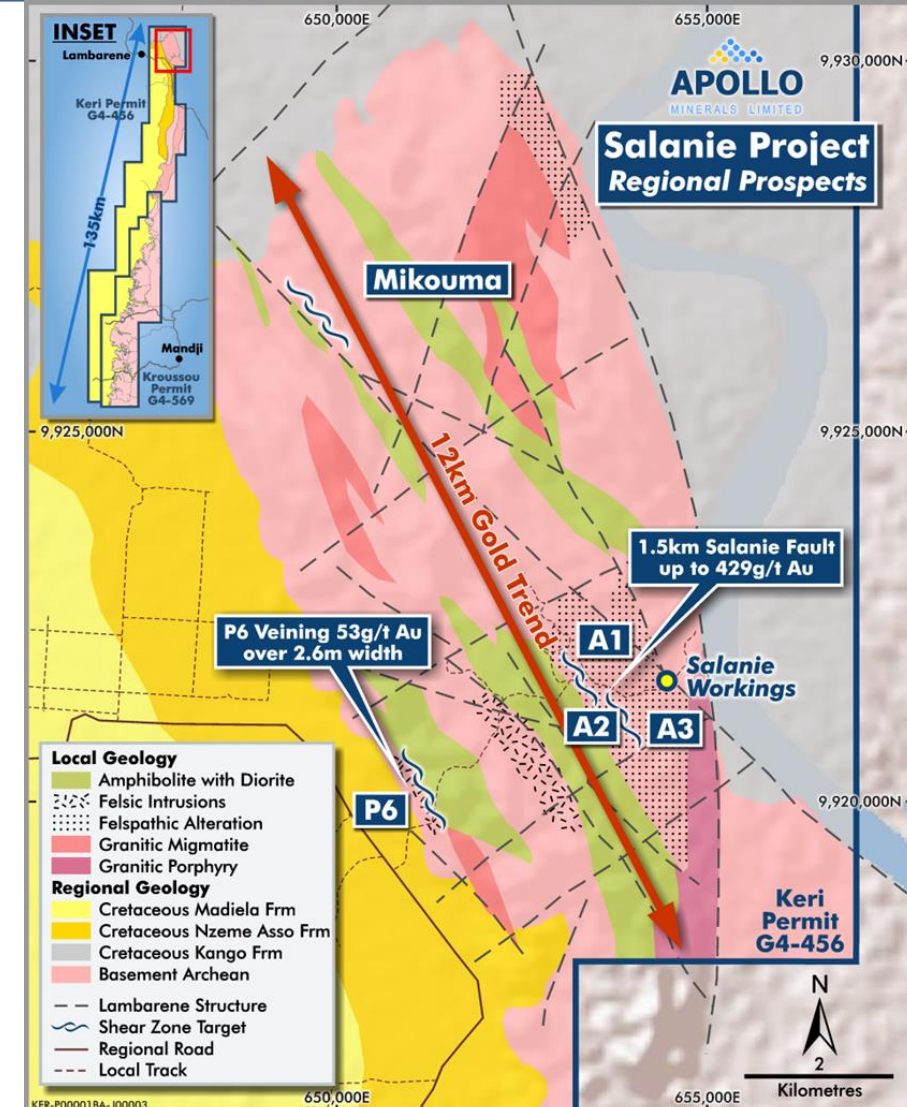
- Indicates strong potential for system extents

## Visible Gold hosted in Quartz veining

- Amenable to gravity separation

## Only 20km from the major town of Lambarene

- Sealed highway to project entrance
- Excellent local infrastructure



# Salanie – Impressive first stage exploration results

## Key Prospects defined at A1 to A5

### Multiple occurrences of visible gold

- Up to **429g/t** rock chips and **53g/t** over +2.5m wide in veining

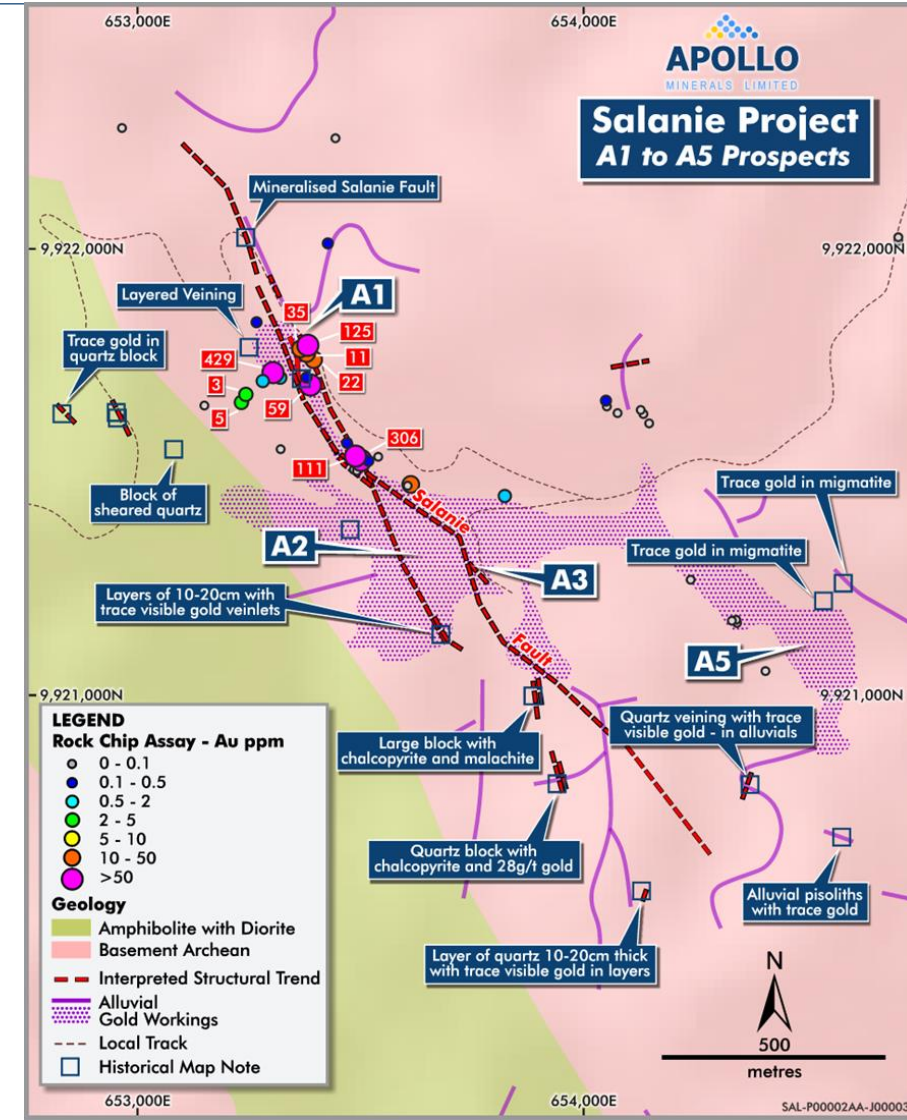
### Field work confirms strong, broad structure at A1

- Visible gold located in multiple locations across 22m trench (SATR001)
- Trench results include:
  - 2m @ 17g/t Au** within 10.3m @ 3.4g/t Au; and separately
  - 1.4m @ 15.7g/t Au**
- Mapping indicates **20m+ wide zone that extends for over 250m**

### 1.5km controlling structure identified

- Numerous rock chips > 10g/t along trend
- Visible gold noted in multiple locations along trend

### Historical A3 Pit target yet to be tested





# Salanie Gold Mine – Untouched since 1953



Crusher footings discovered in 2022 reconnaissance mapping



**RICHESSSES MINIÈRES : Mines d'or de la Salanié (Gabon).** — L'A.E.F. se trouve actuellement, pour la production de l'or, en tête des territoires français d'Afrique avec une production de 1.750 kilos en 1950. La production du Gabon représente la moitié de la production aurifère totale (or alluvionnaire surtout et or en filon). L'exploitation en est difficile : les gisements alluvionnaires se trouvent dans les vallées de marigots à régime torrentiel, situés généralement dans des régions boisées ou montagneuses. D'abord très rudimentaires, les méthodes d'exploitation de l'or, comme celles du diamant (1), se sont améliorées. Déjà, sur plusieurs chantiers, l'exploitation est en partie mécanisée.

(1) 111.000 carats en 1950.

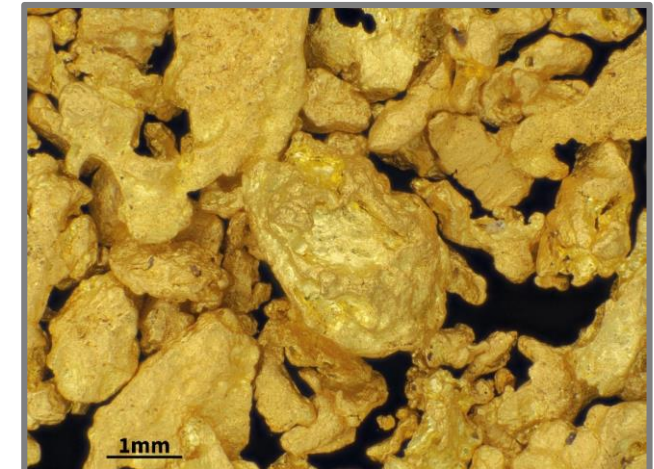
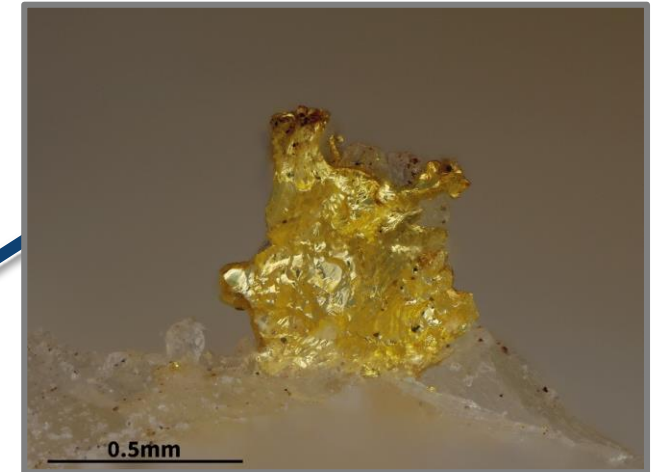
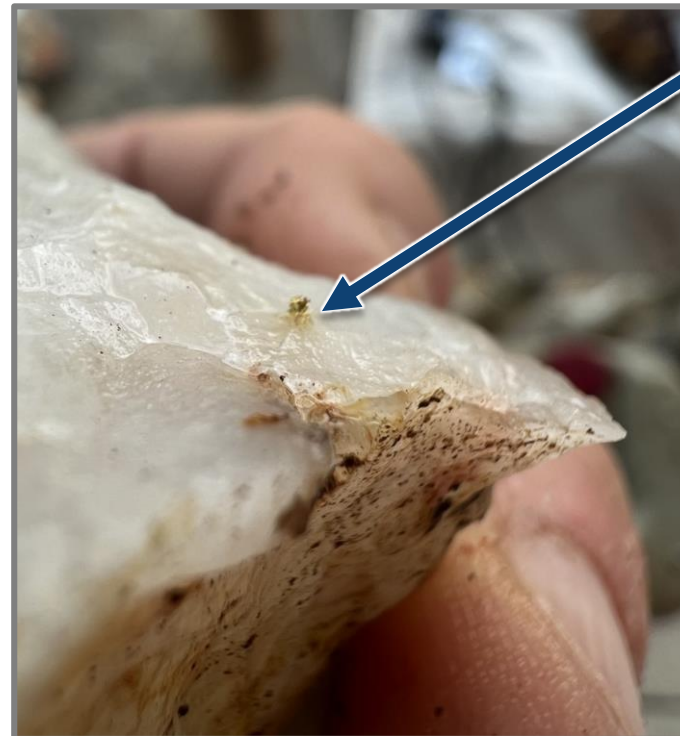


# A1 Prospect - Visible Gold in Veining at Surface

Numerous gold occurrences associated with quartz veining alluvial workings down-hill



Visible Gold in A1 SATR001 trench



Alluvial gold from A3

Sample R0357 - 429g/t Au  
70m along strike from SATR001

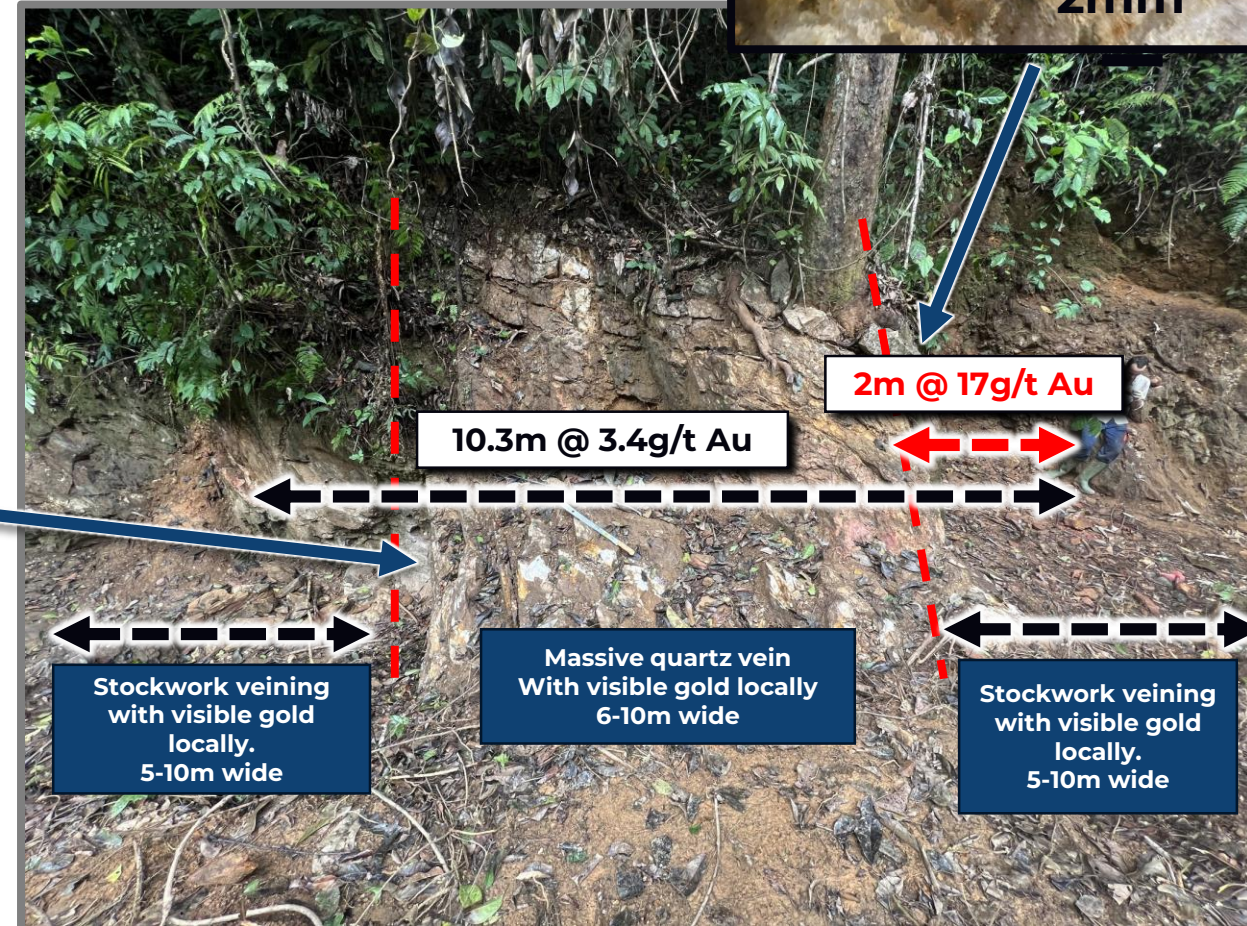
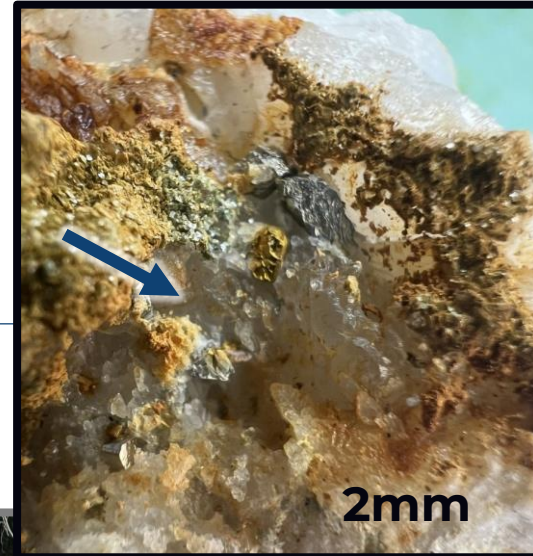


# A1 Mineralised Vein System +20m Wide

Extends for >250m to the West

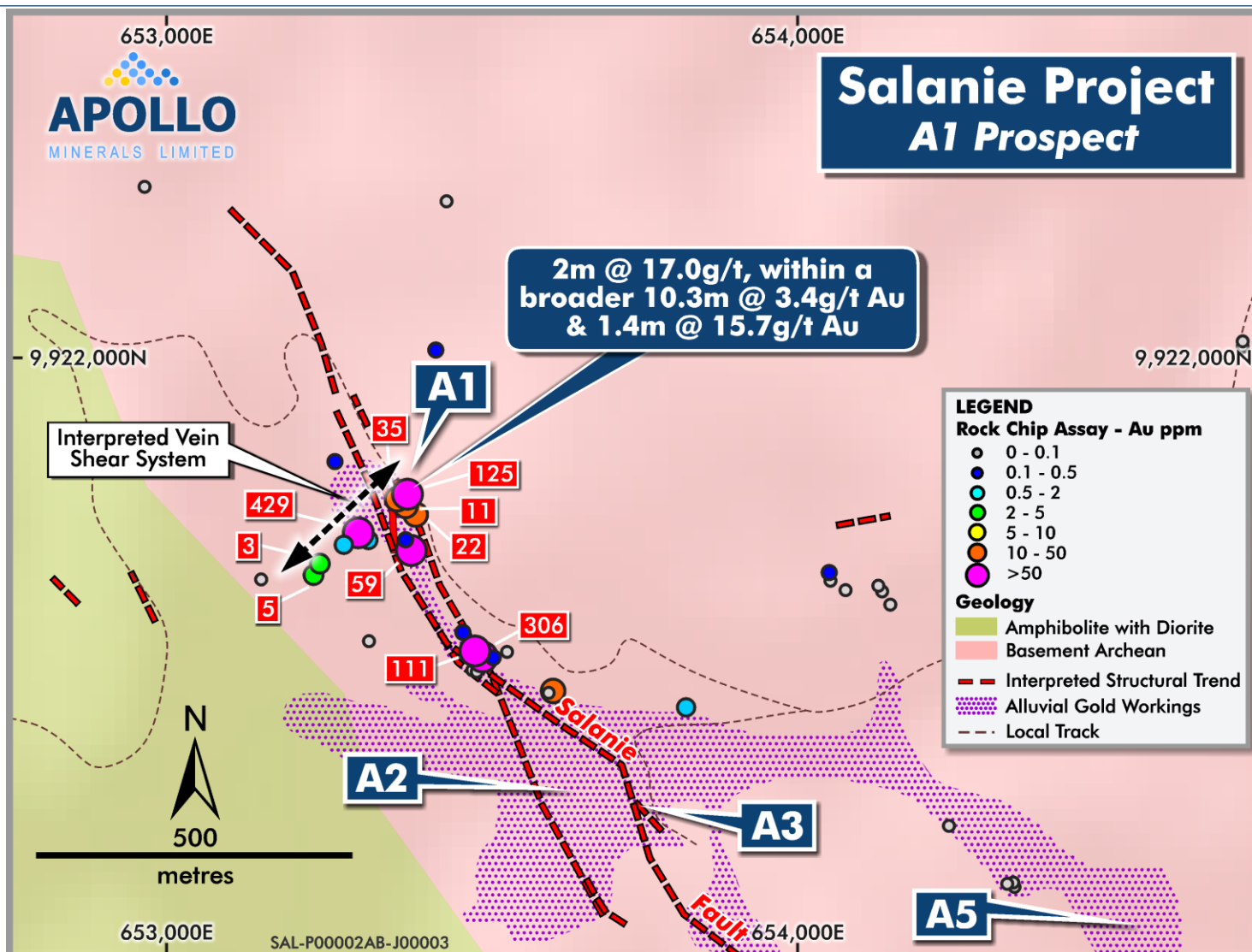
## Numerous Visible Gold occurrences over 22m in SATR001 Trench

- Outcropping at surface
- Thick (+20m) vein system, trending over hundreds of metres
- Chip samples up to **430g/t Au** 80m along strike trend
- Never drill tested
- Priority drill target



# A1 Prospect

+250m Trend Identified by trenching





# P6 Prospect – Drill ready target

**Separate Structure – 2.7km to the west of A1 Prospect**

**Historical Mining > 10g/t Au**

**AON face sampling – 53g/t Au over 2.6m width** (Sept '23)

- Newly excavated to be 6.2m wide

**Open Along Strike and Dip Extents**

- Broad shear system 6-10m wide
- Field mapping indicates significant trend potential

**Never drill tested, priority drill target**





# Salanie - Next Steps

## **Mechanical trenching**

- Expand A1 trends
- First trenching at A3 Pit and trend, A2 Prospect – visible gold in significant veining noted in historical reports

## **Track access**

- Re-establishing existing logging roads
- Pads for drilling

## **Target drilling for early in the new year**

- A1 and P6 Prospects as a priority
- A3 pit after trenching

## **Expand existing regional soils**

- 60% of greenstone belt covered already

## **Airborne magnetics and LIDAR over greenstone trend**

- Maiden geophysics over the greenstone trend

## **Continued Government and Community Engagement**

- Building on the strong relationships already established





# Gabon

Strong Mining History



## Australian and Major Mining Companies



**Eramet (Comilog)**



**Fortescue Metals Group (ASX: FMG)**



**Genmin Limited (ASX: GEN)**



**Armada Metals (ASX: AMM)**

## Positive Mining Jurisdiction

- 2019 Mining Code and tax exemptions introduced to boost foreign investment
- World leader (#2) for Manganese mining
- One of the largest ports in Africa<sup>1</sup>
- Extensive road and rail network
- Business as usual under Transitional Government



**>50% Hydropower  
75% planned by 2025**



**Newest Member of  
the Commonwealth  
June 2022**

<sup>1</sup>Source: African Development Bank; <sup>1</sup><https://www.istanbulafrika.com/top-25-largest-ports-in-africa/>



# Executive & Management

Extensive Development and Mining Experience Across Africa



## Ian Middlemas

Non-Executive Chairman

Mr Middlemas was a Senior Group Executive for Normandy Mining for more than ten years, which was Australia's largest gold miner before merging with Newmont Mining. He is currently Chairman of a number of ASX listed resource companies and was previously Chairman of Papillon Resources Limited and Mantra Resources Limited.



## Neil Inwood

Managing Director

Mr Inwood is a Geologist with over 25 years' international experience in the exploration and mining industry, particularly in base metals, gold and uranium. He has had significant management, consulting, and venture capital experience, and was previously Managing Director of Berkut Minerals Limited, Executive Geologist with Verona Capital, Principal Resource Geologist with the international mining consultancy Coffey Mining and held senior site positions with Barrick Gold.



## Paul Roberts

Non-Executive Director

Mr Roberts has a long and successful history in mineral exploration management and mine geology in Australia, Africa, and South America. Mr Roberts was the Founder and Managing Director of African focussed gold explorer Predictive Discovery Limited (ASX:PDI) for over a decade, where he was responsible for the discovery of the world class Bankan Gold Project in Guinea, West Africa.



## Robert Behets

Non-Executive Director

Mr Behets is a geologist with over 30 years' experience in the mineral exploration and mining industry in Australia and internationally. Mr Behets was instrumental in the founding, growth and development of Mantra, an African-focused uranium company, through to its acquisition by ARMZ for approximately A\$1 billion in 2011.



## Ajay Kejriwal

Non-Executive Director

Mr Kejriwal has over 25 years' experience in finance and commerce, and is currently a consultant to Juniper Capital, a natural resource investment and advisory business. Prior to Juniper Capital, he was a banker leading many investment transactions across oil and gas, mining, real estate and asset management sectors.



# Corporate Overview

ASX: AON – Apollo Minerals



**557M**

Ordinary shares on issue



**A\$0.027**

Share price 16 Nov-2023



**AU \$15.0M**

Market cap 16-Nov-2023



**\$1.6M** Incl. Cash at 30-Sep-23  
and \$0.3M in shares

## Ownership Structure



**Board & Management**

10%

**Top 20 Shareholders**

54%





# Disclaimer

## Forward Looking Statements

This presentation may include forward-looking statements. These forward-looking statements are based on Apollo Minerals Limited's (Apollo Minerals) expectations and beliefs concerning future events. Forward looking statements are necessarily subject to risks, uncertainties and other factors, many of which are outside the control of Apollo Minerals, which could cause actual results to differ materially from such statements. Apollo Minerals makes no undertaking to subsequently update or revise the forward-looking statements made in this announcement, to reflect the circumstances or events after the date of that announcement.

## Cautionary Statements & Important Information

This presentation has been prepared by Apollo Minerals as a summary only, and does not contain all information about Apollo Minerals' assets and liabilities, financial position and performance, profits and losses, prospects, and the rights and liabilities attaching to Apollo Minerals' securities. Any investment in Apollo Minerals should be considered speculative and there is no guarantee that they will make a return on capital invested, that dividends would be paid, or that there will be an increase in the value of the investment in the future. Apollo Minerals does not purport to give financial or investment advice. No account has been taken of the objectives, financial situation or needs of any recipient of this presentation. Recipients of this presentation should carefully consider whether the securities issued by Apollo Minerals are an appropriate investment for them in light of their personal circumstances, including their financial and taxation position.

In relation to the disclosure of visual information and rock chip descriptions, the Apollo Minerals cautions that the images displayed are for general illustrative purposes only, and that the samples displayed, and visual methods of visible gold or sulphide identification and estimation of mineral abundance should not be considered as a proxy for laboratory analysis, and that laboratory analysis is required to determine the grades of the rock chip samples. The rock chip samples are point samples (typically 10-15cm in diameter) taken in the field and do not represent true trends or widths of mineralisation. Apollo Minerals will update the market when the laboratory samples are received.

## Competent Persons Statement

The information in this presentation that relates to Exploration Results is extracted from ASX announcements on 18 October 2022, 19 July 2023, 29 August 2023, 13 September 2023 and 15 November 2023 which are available to view at [www.apollominerals.com](http://www.apollominerals.com).

The Company confirms that (a) it is not aware of any new information or data that materially affects the information included in the original announcements; (b) all material assumptions and technical parameters underpinning the content in the relevant announcements continue to apply and have not materially changed; and (c) the form and context in which the Competent Person's findings are presented have not been materially modified from the original announcements.







# Kroussou - Major Zinc Sulphide Discovery

Emerging Globally Significant Base Metal Project

## Province-scale sedimentary hosted base metal system

- Apollo Minerals discovery drilling since April 2021

## >300km of prospective embayment contacts over a 135km trend

- Less than 12% of embayment trends drill tested

## 23 defined base metal Target Prospects

- only 6 broadly drilled to-date, **all mineralised**
- Shallow mineralisation – averages 15m from surface

## Three Target Styles – Embayment, Structural and Classic MVT

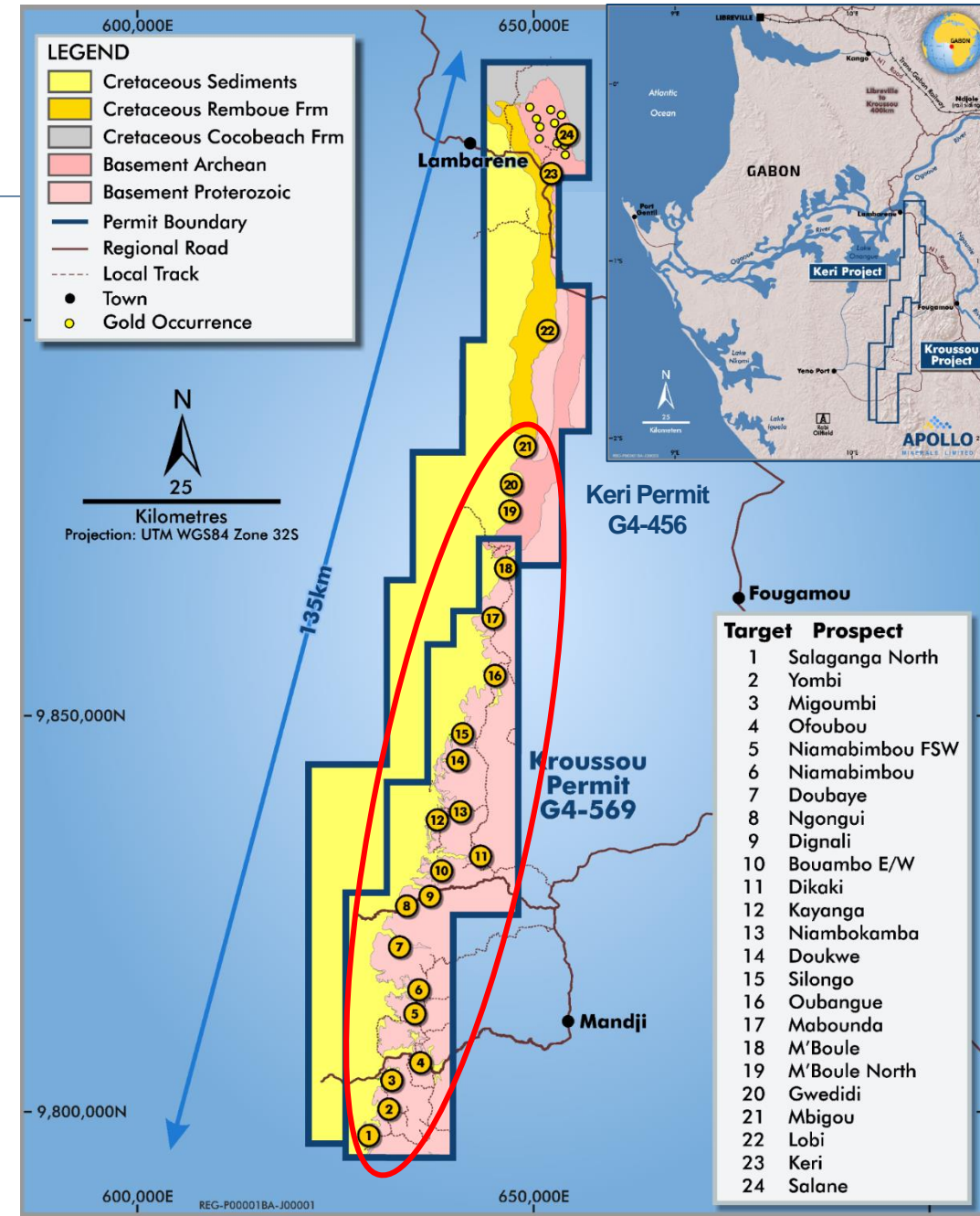
- World class potential
- Multiple target horizons

## Massive sulphide discovery at TP13 (Niambokamba)

- **40% Zn+Pb over 3.5m** from 4m - **open along trend**
- **New structural style now also mapped at TP1** over 11km trend – 40km to the south of TP13

## Zinc-sulphide dominant

- Zinc averages ~72% of the reported Zn+Pb grades





# Belgrade Copper Project - Serbia

Newly Acquired, High Quality European Copper Project



**Excellent potential for discoveries of world class sedimentary-hosted copper** similar to the Kupferschiefer style in Poland

**More than 70km of untested prospective contacts.**

**Rock chip samples up to 20% copper and 1,540ppm silver**

**Only 80km from Zijin's world-class Bor copper mines.**

**Hosted within the same Province which host the world class copper deposits of Bor and Cukaru Peki (30Mt contained copper - Zijin) - Serbia's prolific Carpatho-Balkanian Metallogenic**

**Field work commenced**

