



ASX / KRR

April 2025

AGES PRESENTATION

AGES – RESOURCING THE TERRITORY
PRESENTATION

9 April 2025, Alice Springs, NT

Gold Exploration in the East Tennant and Barkly Region

Targets in Warramunga-equivalent units under
Cambrian cover, and in the Ooradidgee Group

Photo from Hopeful Star old workings looking east towards KRR's Tennant East Project

Important Notices



Disclaimer & Competent Persons Declaration

The purpose of this presentation is to provide an update on the business of King River Resources Ltd (ASX: KRR) ('Company'). These slides are intended solely as a presentation aid, and the information contained within may require further explanation and/or clarification. The slides should be read in conjunction with past and future announcements made by King River Resources Ltd and should not be relied upon as an independent source of information.

This presentation does not constitute a recommendation or forecast by King River Resources Ltd. Nothing in this presentation should be construed as either an offer to sell, or solicitation of an offer to buy or sell shares, in any jurisdiction.

Cautionary Statement regarding forward looking information

This presentation contains forward-looking statements concerning King River Resources Ltd. Forward-looking statements are not statements of historical fact, and actual events and results may differ materially from those described in the forward-looking statements as a result of a variety of risks, uncertainties and other factors. Forward-looking statements are subject to inherent risks related to business, economic, competitive, political and social uncertainties. Many factors could cause the Company's actual results to differ materially from those expressed or implied in any forward-looking information provided by, or behalf of, the Company. Forward looking statements in this release reflect the Company's beliefs, opinions and estimates as of the dates the statements are made. The Company assumes no obligation to update forward looking statements if these beliefs, opinions and estimates should change or to reflect other future developments.

Competent Persons Statement

The information in this presentation that relates to Exploration Results is based on information compiled by Andrew Chapman. Mr. Chapman is a Consulting Geologist contracted with the Company and a member of the Australian Institute of Geoscientists (AIG). Mr. Chapman has sufficient experience of relevance to the styles of mineralisation and the types of deposits under consideration, and to the activities undertaken, to qualify as a Competent Person as defined in the 2012 Edition of the Joint Ore Reserves Committee (JORC) Australasian Code for Reporting of Exploration Results, Mineral Resources and Ore Reserves. Mr Chapman consents to the inclusion in this report of the matters based on information in the form and context in which it appears.

ASX Listing Rules Compliance Statement

The Company confirms that it is not aware of any new information or data that materially affects the information in the relevant ASX releases previously made. The Company confirms that the presentation of the Competent Person's findings remains consistent in both form and context with the original market announcements, with no material changes.

This announcement has been approved for release by the Board of King River Resources Limited.

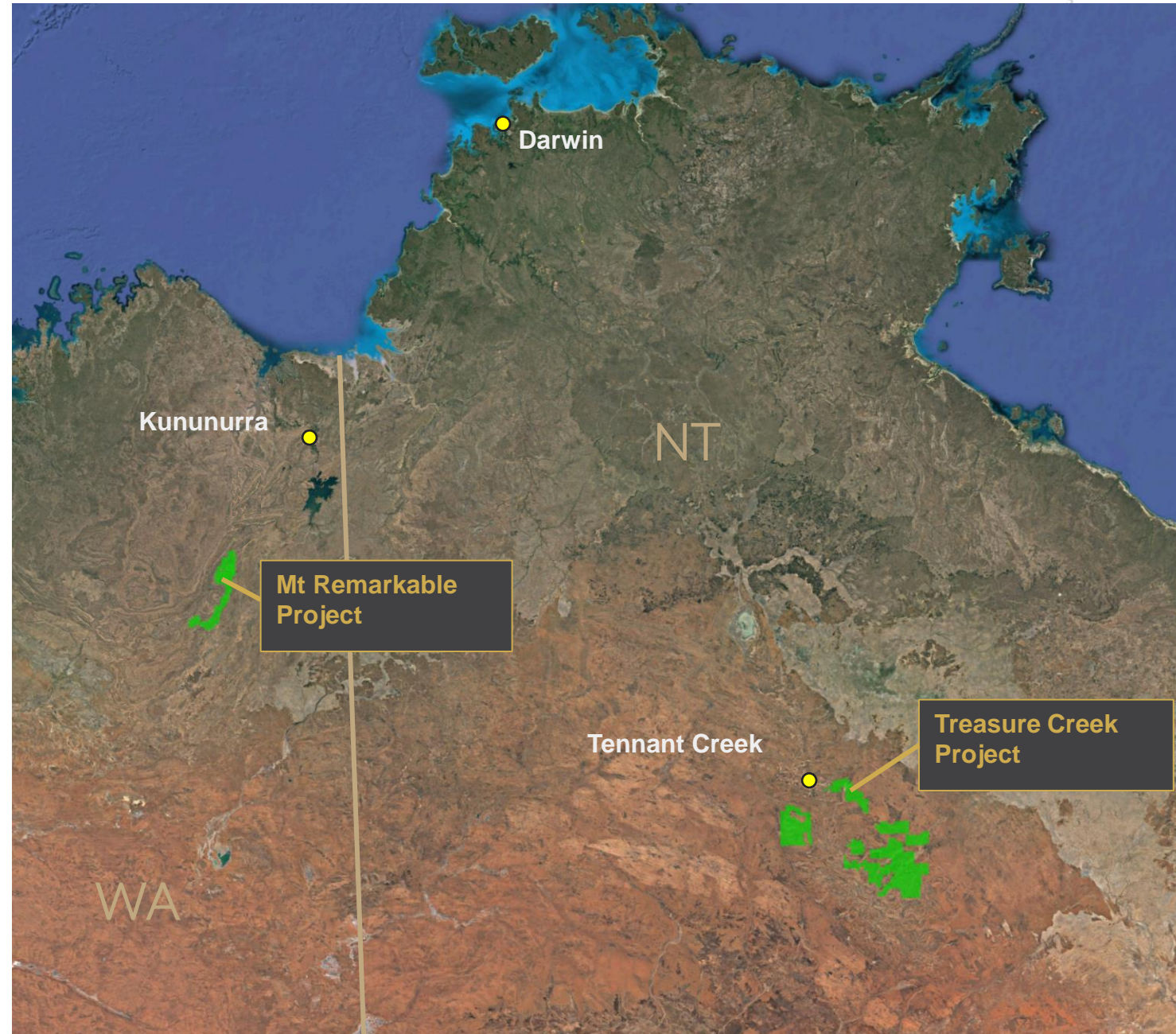
King River Resources Limited (KRR)

(NT wholly owned subsidiary Treasure Creek Pty Ltd)

(WA wholly owned subsidiary White Water Minerals Pty Ltd)

Acknowledgements:

- Tony Barton (Chair)
- Greg MacMillan (Director/Company Secretary)
- Leonid Charuckyj (Non Executive Director)
- Ken Rogers (Chief Geologist/Research Scientist)
- Kathrin Gerstmayr (Joint Company Secretary)



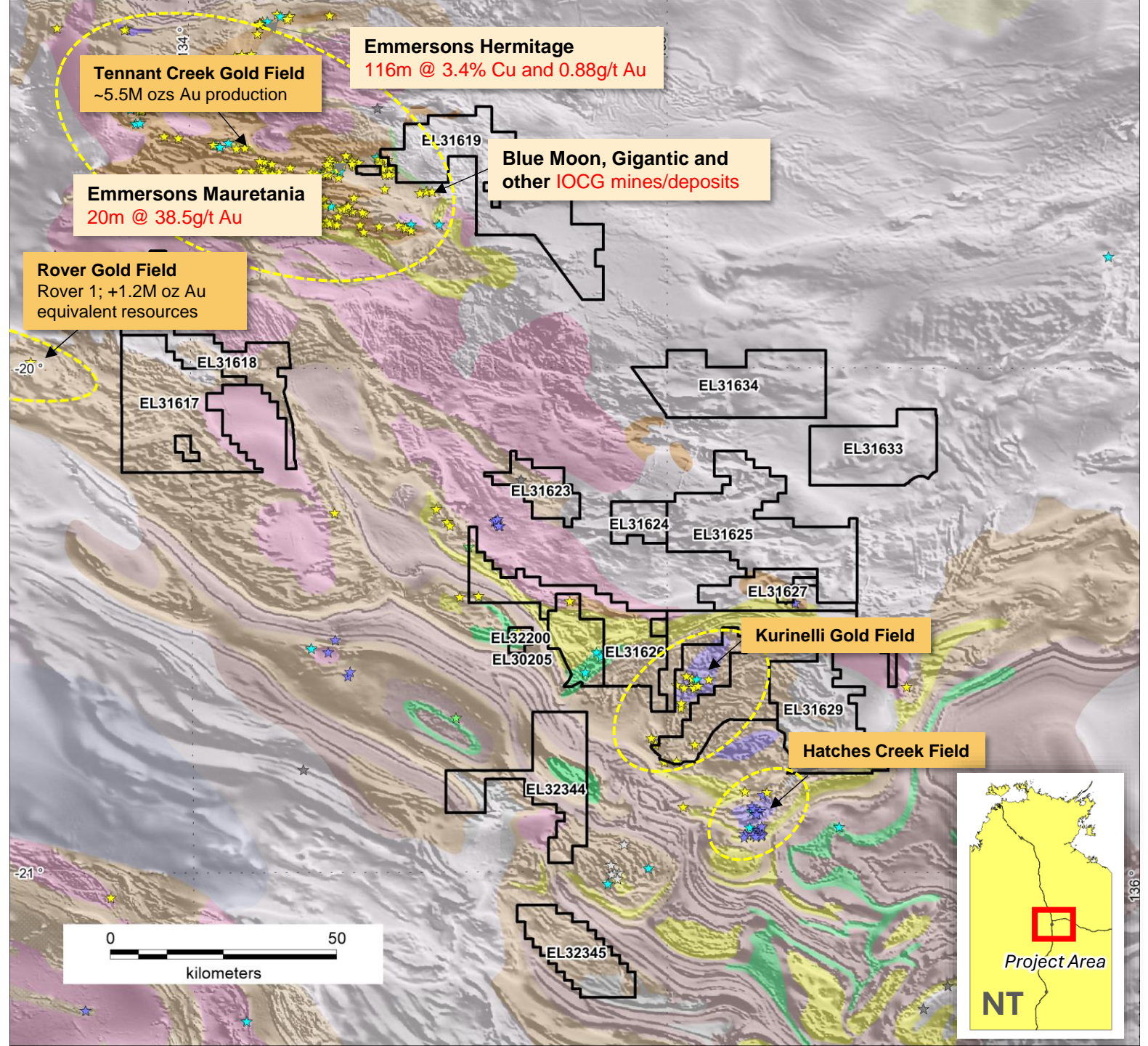
Tenement Holdings:

KRR's Treasure Creek Holdings:

- 16 exploration licences (Treasure Creek Pty Ltd)
- ~5,000km²

Tennant Creek, Rover, Kurinelli, Hatches Creek Minearal Fields

- There have been exciting exploration results from the area in recent years
- Tennant Creek is known for bonanza-style gold/copper intersections



Main projects:

Tennant East,
Barkly,
Rover East,
Kurundi

Emmersons Hermitage
116m @ 3.4% Cu and 0.88g/t Au

Emmersons Mauretania
20m @ 38.5g/t Au

Blue Moon, Gigantic and other IOCG mines/deposits

Tennant Creek Gold Field
~5.5M ozs Au production

Rover Gold Field
Rover 1; +1.2M oz Au equivalent resources

**Langrenus
Providence
Commitment**

**Kuiper
Pioneer**

Tennant Minerals Bluebird
63m @ 2.1% Cu copper and 4.6gpt Au

Tennant East Project

- Shallow cover east of main Tennant Gold Field.
- Langrenus, Providence, Commitment, Kuiper, Pioneer targets.
- Warramunga Formation, Ironstones and iron alteration zones discovered at 3 new locations in KRR's RC drilling.

Barkly Project

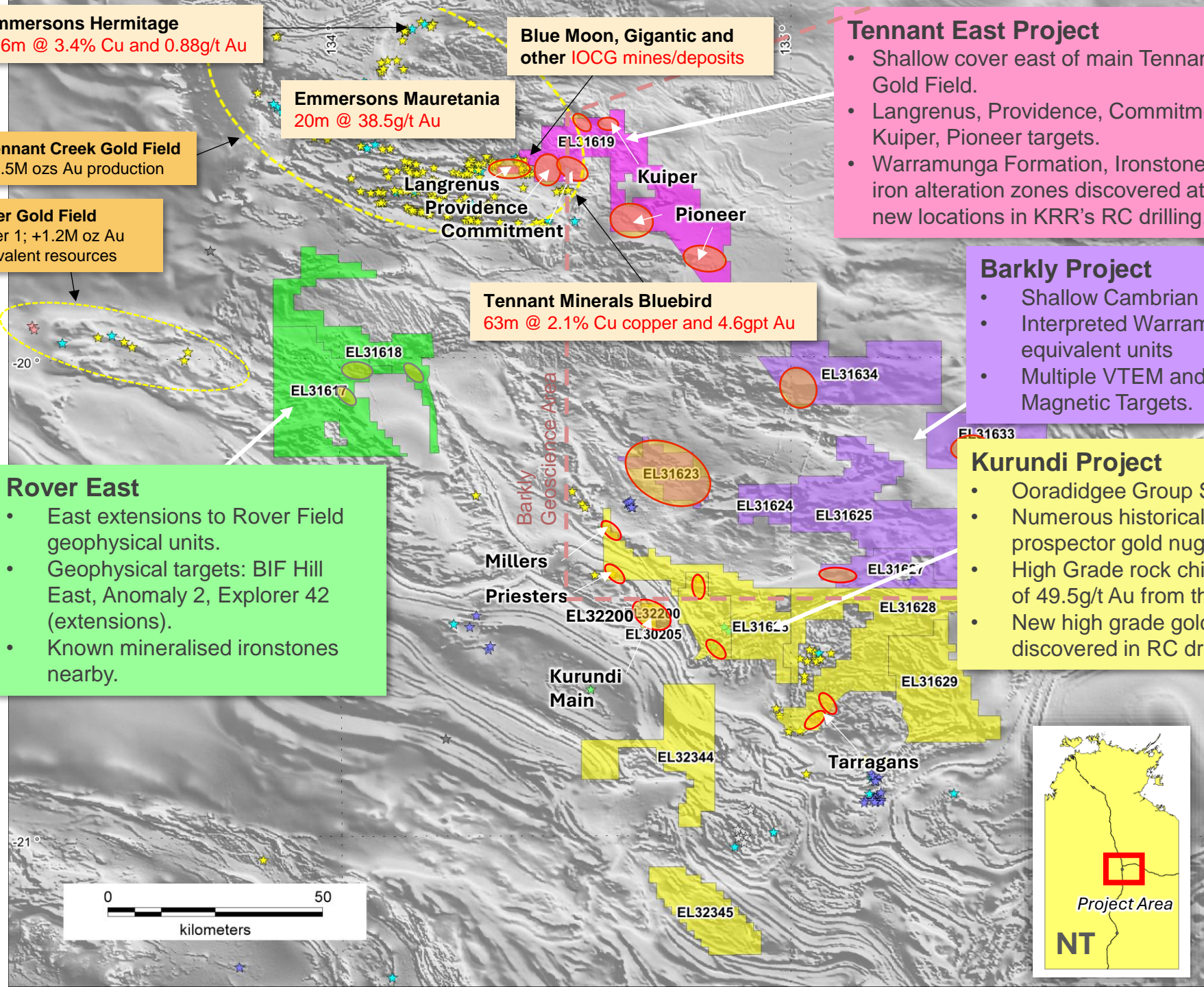
- Shallow Cambrian Cover
- Interpreted Warramunga equivalent units
- Multiple VTEM and Magnetic Targets.

Kurundi Project

- Ooradidgee Group Stratigraphy
- Numerous historical diggings and prospector gold nugget finds.
- High Grade rock chip best result of 49.5g/t Au from the Priesters.
- New high grade gold zones discovered in RC drilling.

Rover East

- East extensions to Rover Field geophysical units.
- Geophysical targets: BIF Hill East, Anomaly 2, Explorer 42 (extensions).
- Known mineralised ironstones nearby.



Regional Setting:

The Tennant Inlier

- Warramunga Province
- Davenport Province

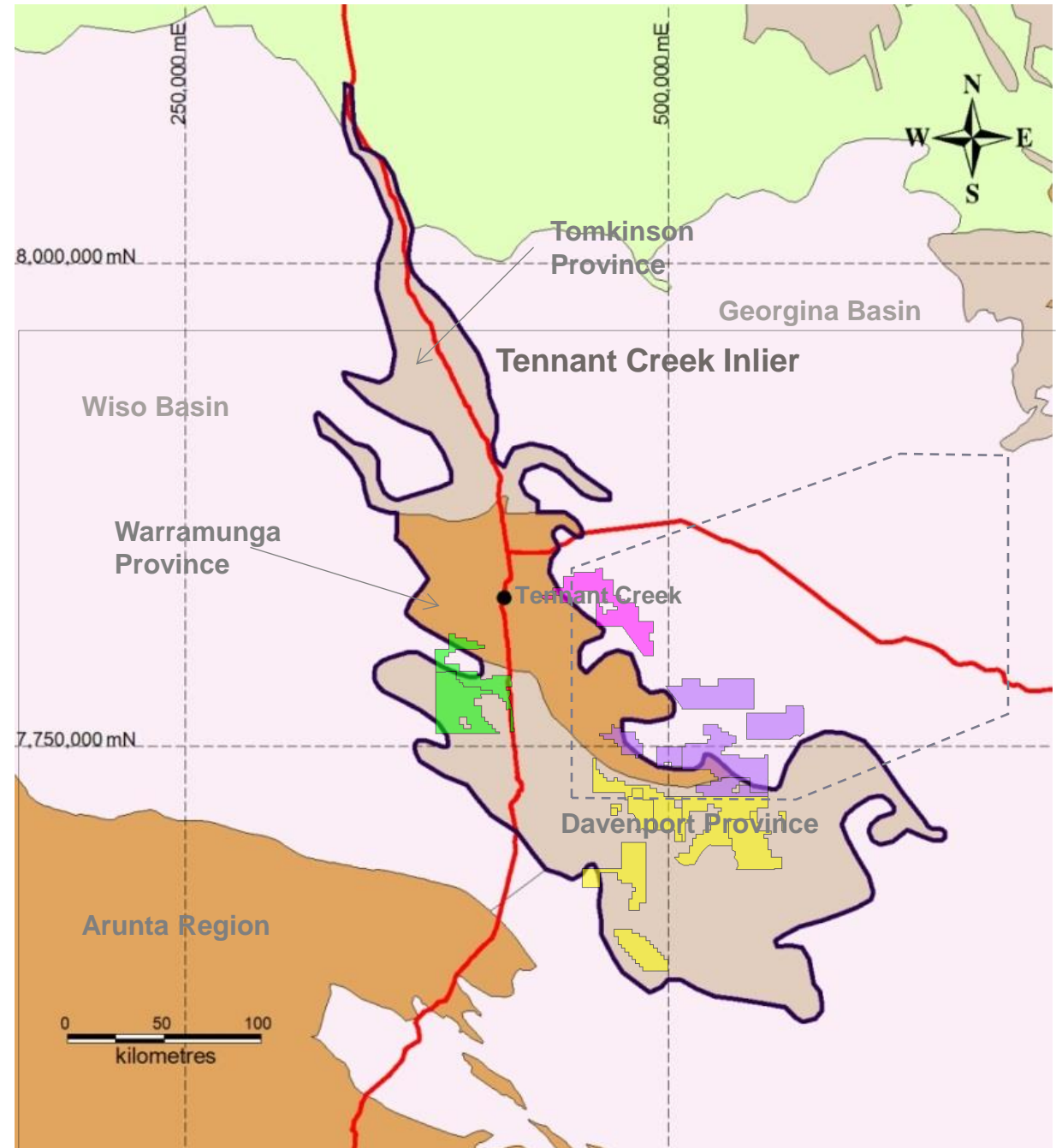
To the West and East:

- Georgina and Wiso Basin
- Cambrian Cover Rocks

KRR had Early entry to Barkly
Precompetitive Area

Early review work highlighted:

- 1) The Wiso and Georgina Basin cover was not as deep as expected
- 2) Academics suggested younger ages for some gold mineralisation events in the region indicating the potential for significant discoveries in stratigraphy younger than the Warramunga Formation.



Exploration Models:

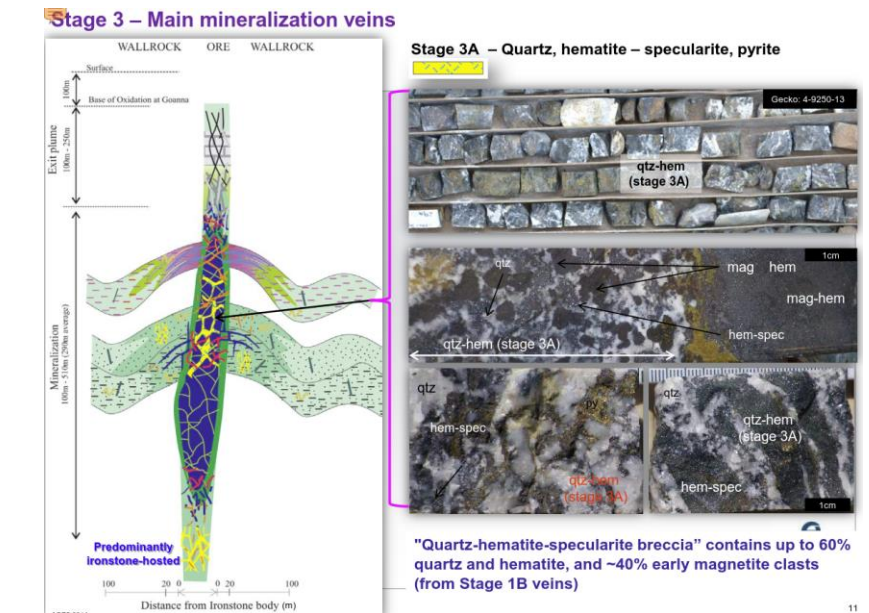
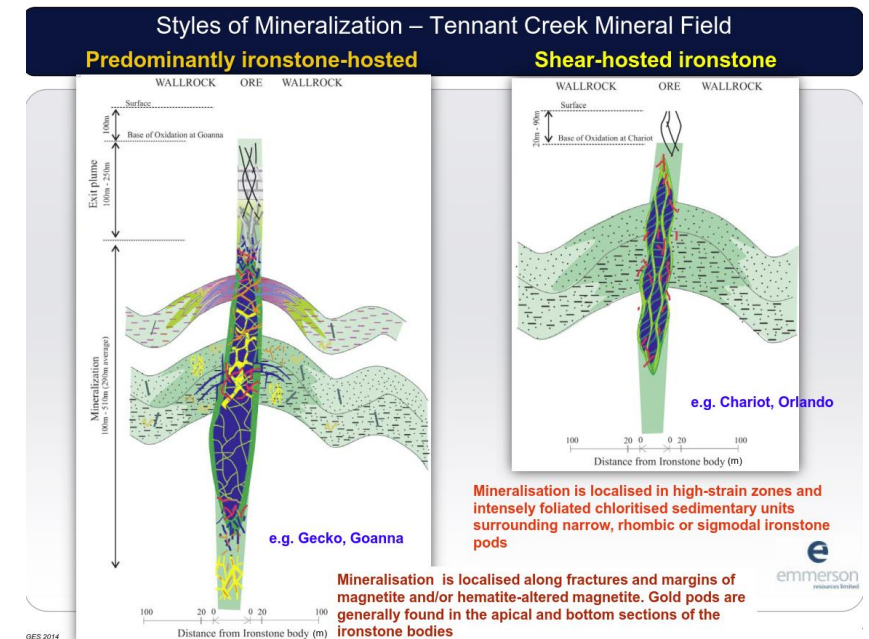
Target Model 1:

Tennant Creek Style Iron Oxide Copper Gold (IOCG) deposits

- Typically, within Warramunga equivalent rocks.
- Mineralisation is associated with magnetite/hematite bodies, often in fold hinges and intersections of structures.
- Geophysical targets: Classic coincident magnetic/gravity anomalies

Target Model 2:

- Gold mineralisation hosted in Stratigraphy younger than the Warramunga Formation (Ooradidgee Group)
- Both Tennant Creek Style Ironstones and shear/vein hosted gold mineralisation



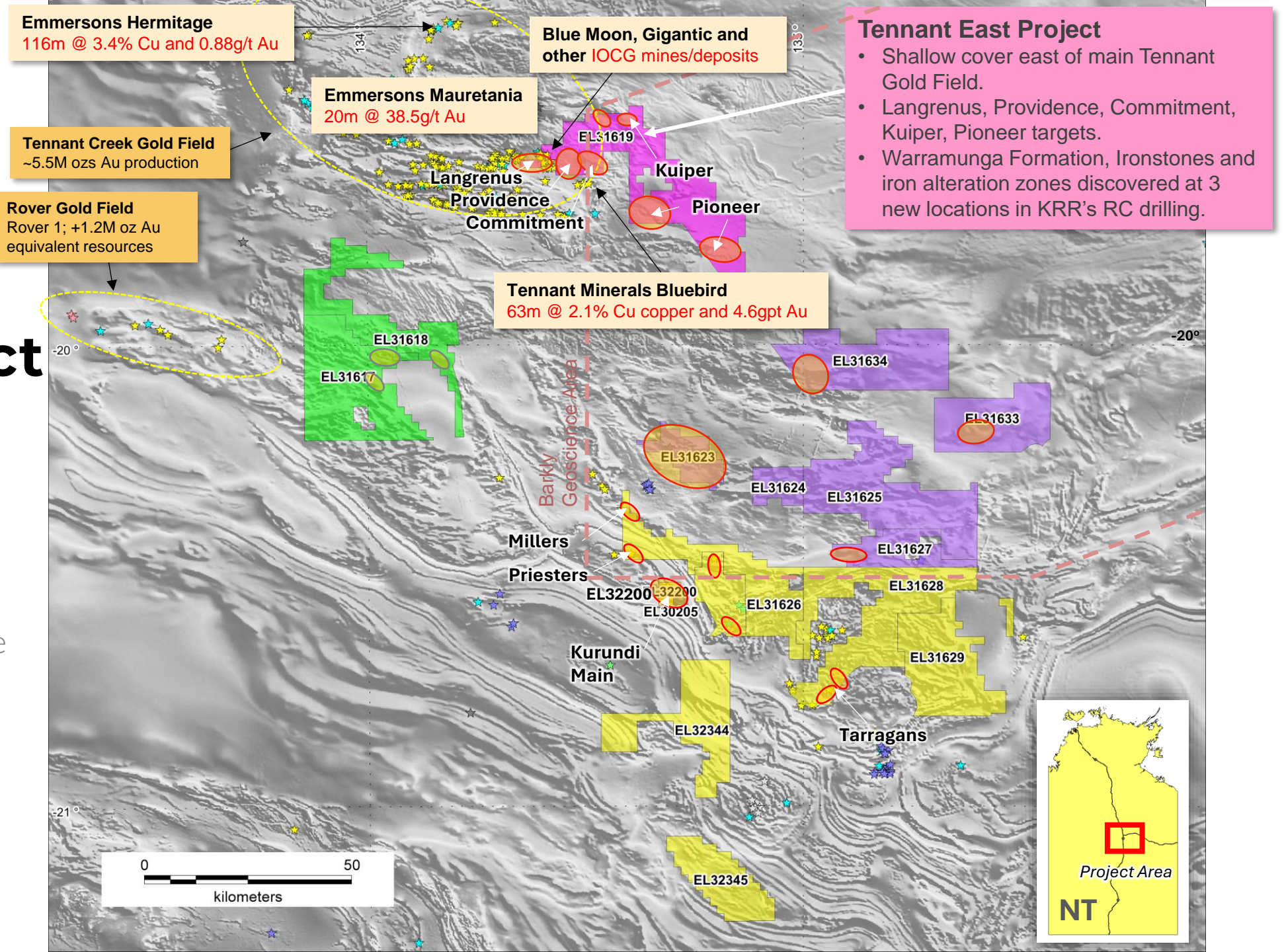
From: An Integrated Geological Model for Tennant Creek Style Au-Bi-Cu Mineralization, Northern Territory, Australia
AG Cuisson, GA Osborne, SC Russell and RT Bills. AGES 2014

Tennant East Project

Edge of the Tennant Creek Field

Cambrian cover gets deeper to east

Next slide: zoom in on Langrenus, Providence and Commitment



Langrenus

- Quartz Hematite Ironstone discovered along strike of Hopeful Star and Mauretania Trend.
- Significant geochemically anomalous RC results up to: 0.2g/t Au, 0.79% Cu, 34g/t Ag and 53ppm Bi.

Mauretania
20m @ 38.5g/t Au
(Emmersons Resources)

Gigantic, Blue Moon, Metallic Hill Mines (Emmerson Resources)

Explorer 195

Commitment

- Geochemically anomalous ironstones discovered under shallow Cambrian cover (38m).

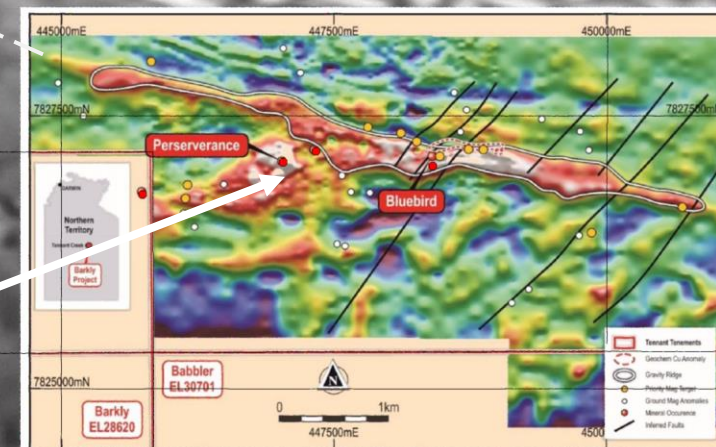
Providence

- Intersection of E-W and NW gravity trends.
- New ironstones and iron alteration zones discovered.
- Anomalous gold values up to 0.1g/t Au on newly tested gravity trend (RC results).
- 0.91% Copper and 65.3ppm Bismuth on main NW trending gravity anomaly in RC results.

Bluebird/Perseverance

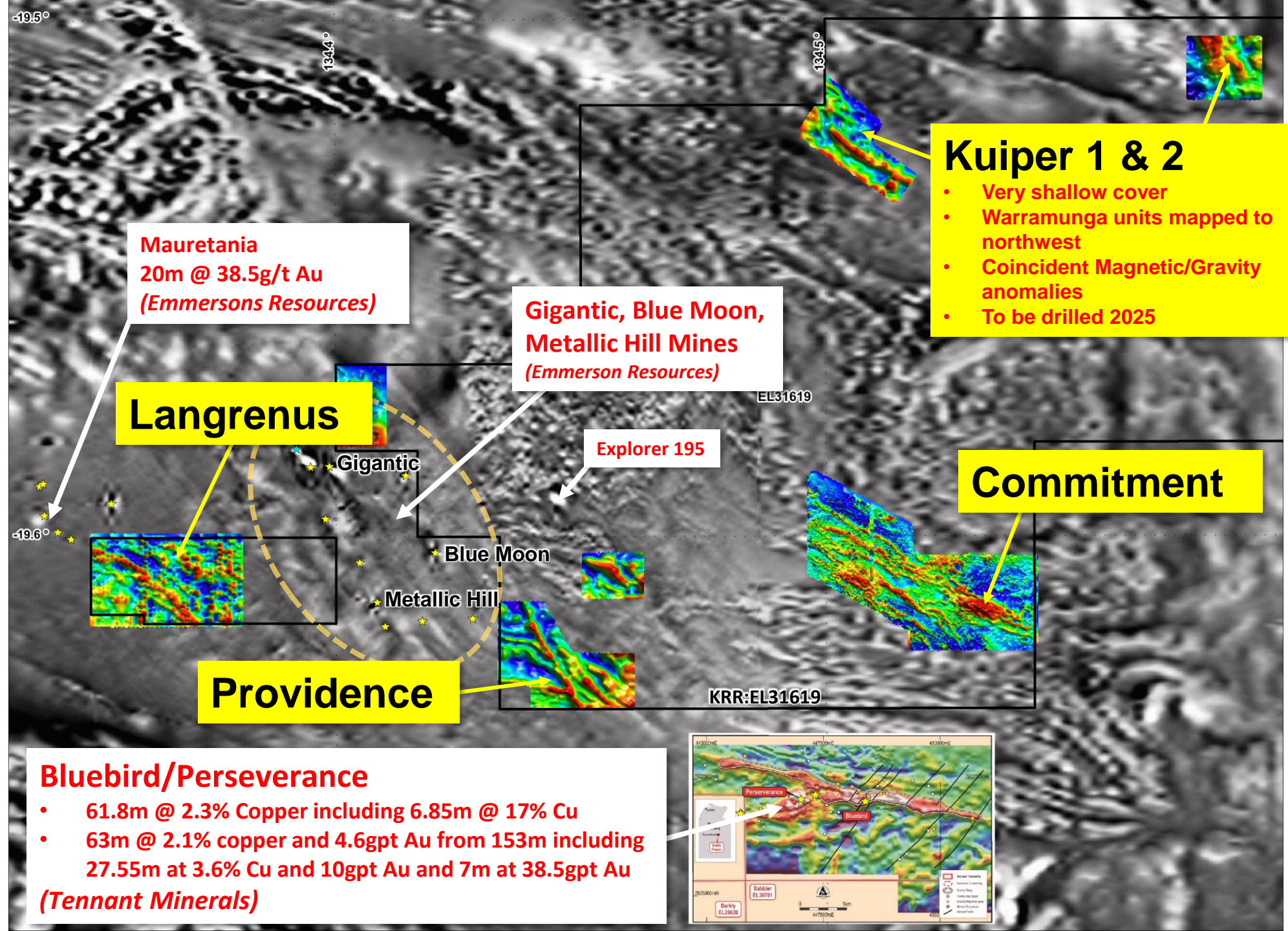
- 61.8m @ 2.3% Copper including 6.85m @ 17% Cu
- 63m @ 2.1% copper and 4.6gpt Au from 153m including 27.55m at 3.6% Cu and 10gpt Au and 7m at 38.5gpt Au
(Tennant Minerals)

5km



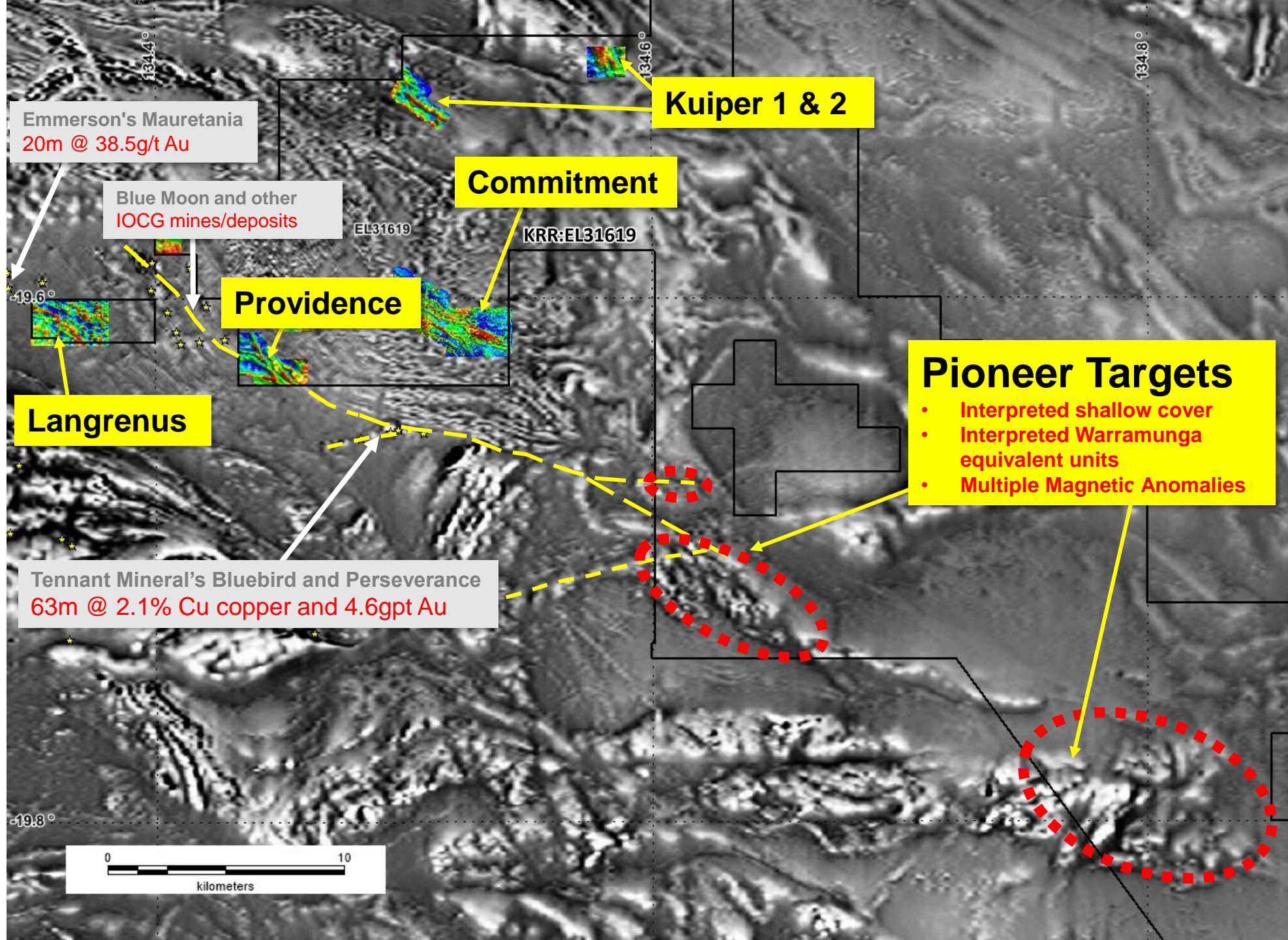
Tennant East Project

Kuiper Targets in relation to Langrenus, Providence and Commitment



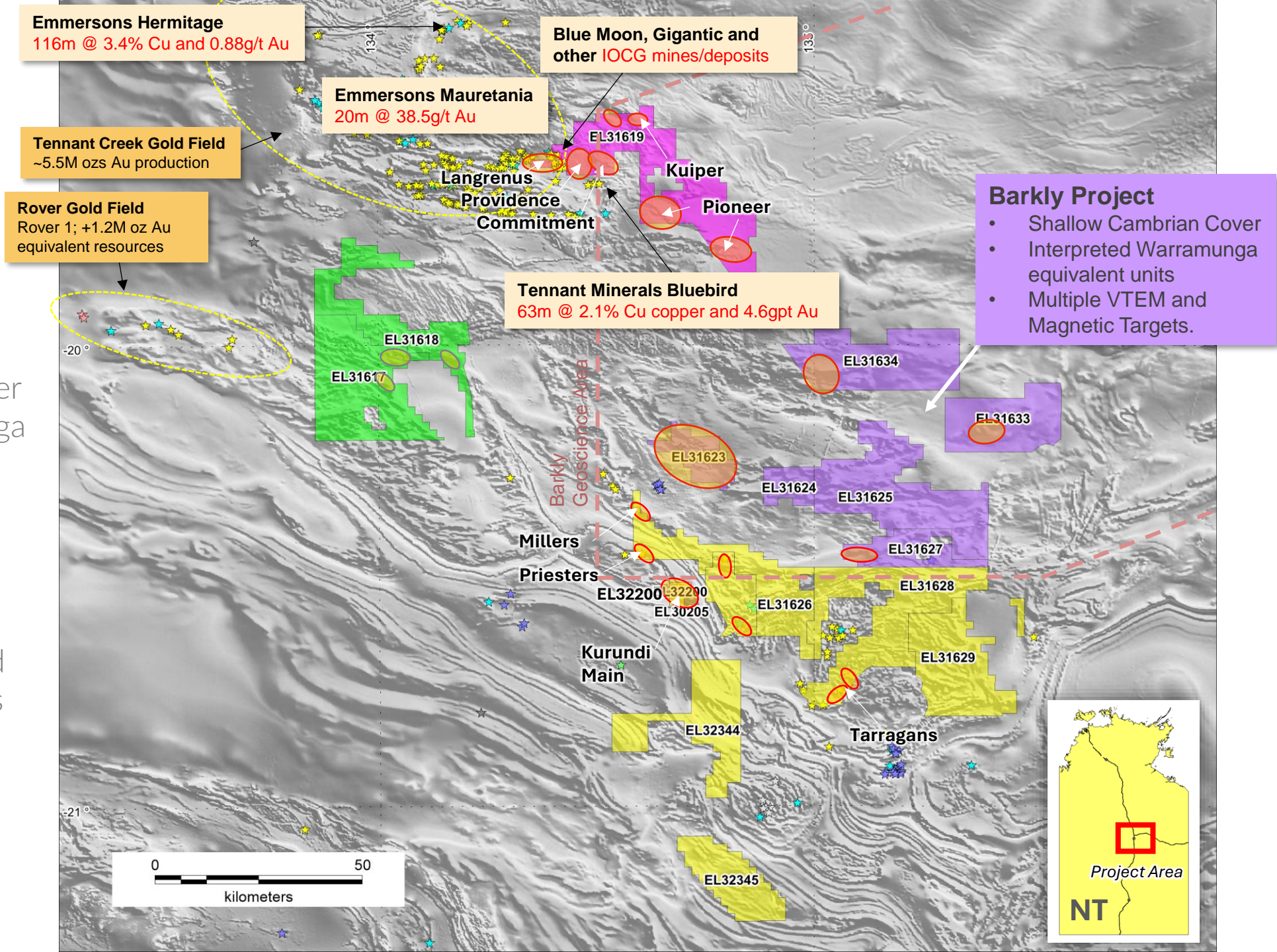
Tennant East Project

Pioneer Targets in relation to Langrenus, Providence and Commitment



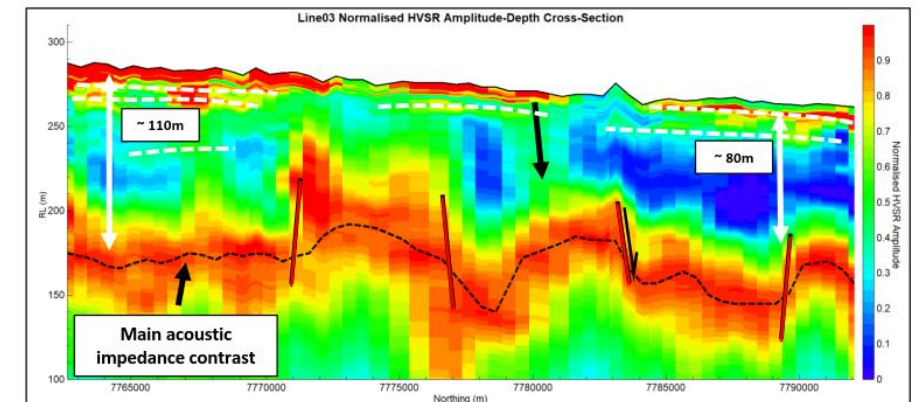
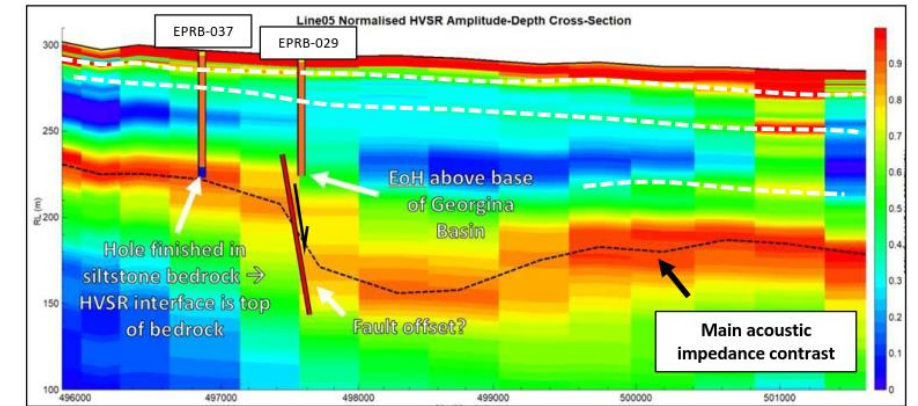
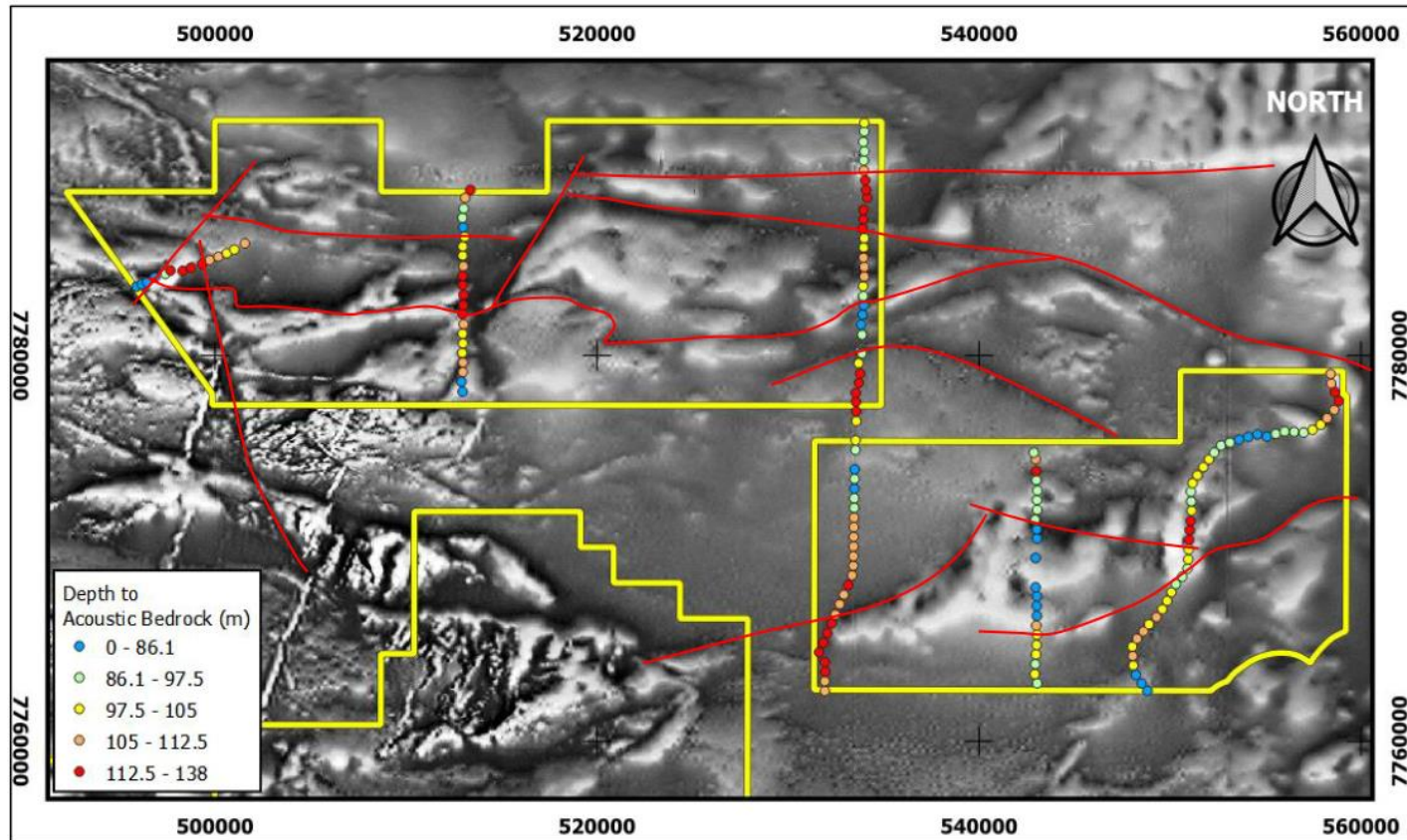
Barkly Project

- Shallow Cambrian Cover
- Interpreted Warramunga equivalent units (along trend from outcrops in 250K mapping)
- Multiple VTEM and Magnetic Targets
- Detailed magnetics and passive seismic surveys completed



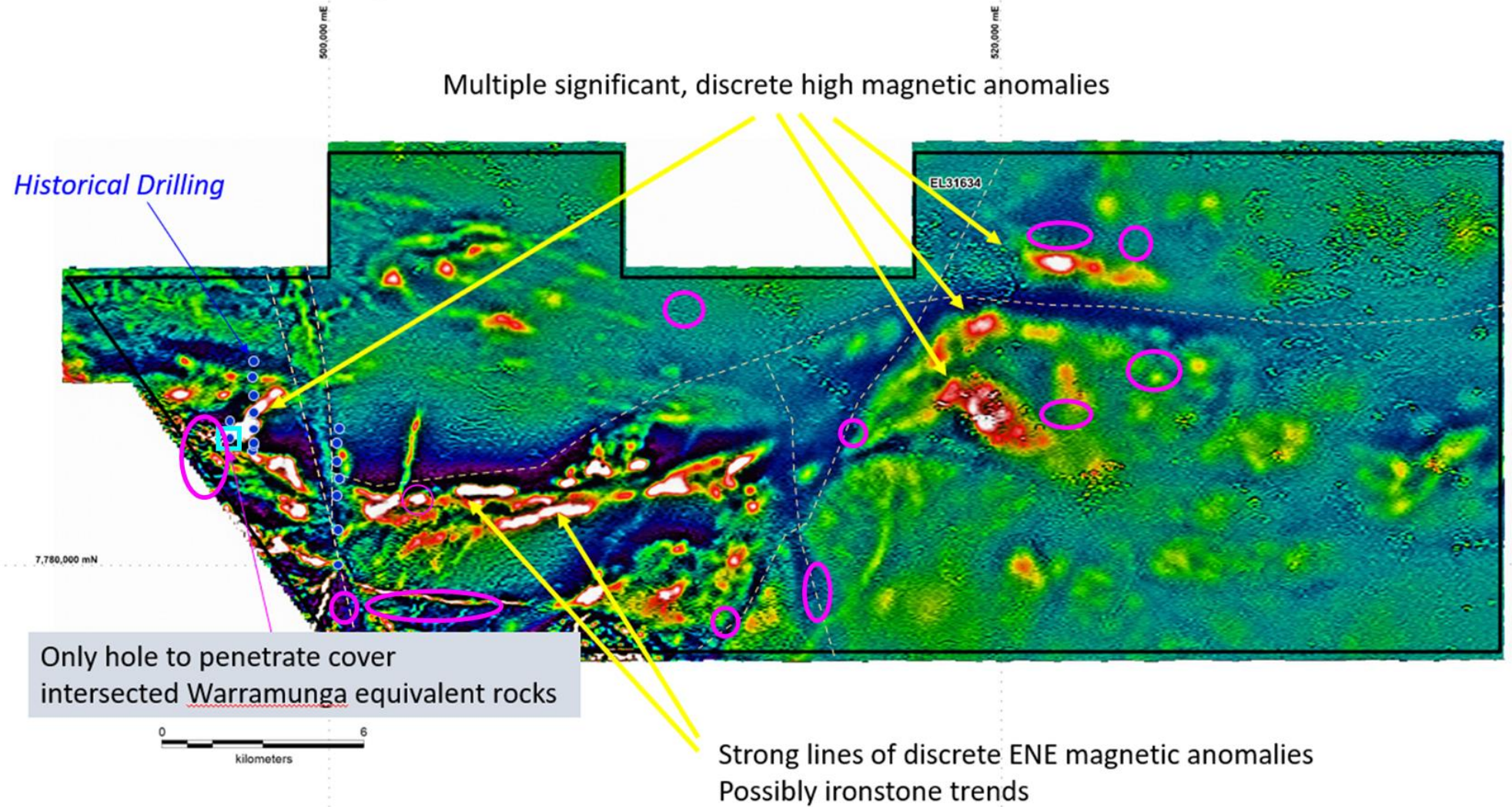
EL31633 and EL31634 - Passive Seismic Lines

Passive Seismic work has helped interpret depth to basement



EL31634

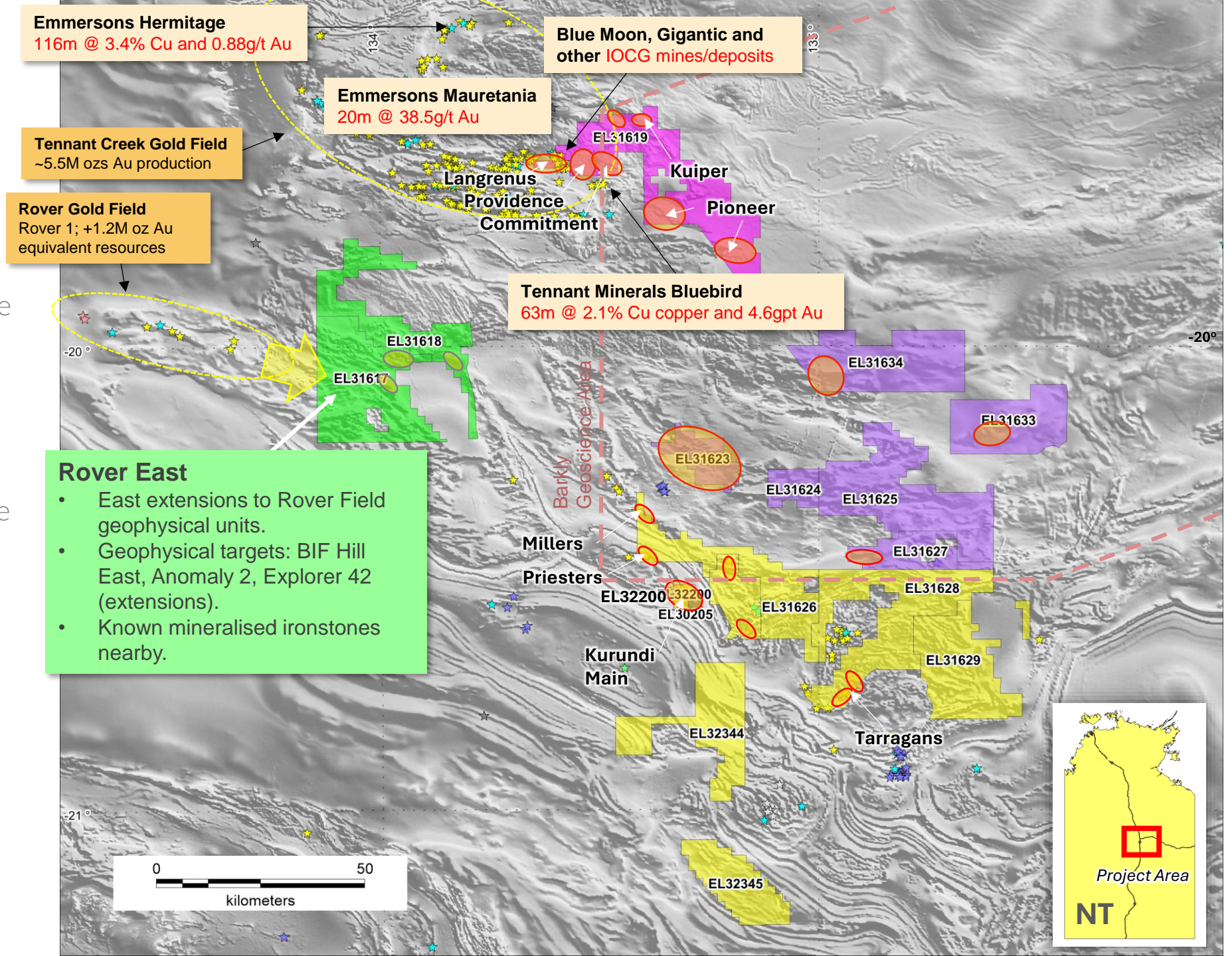
EL31634 – 2021 Airborne magnetics



- IOCG Targets in magnetics and VTEM geophysics
- 80m Cambrian cover

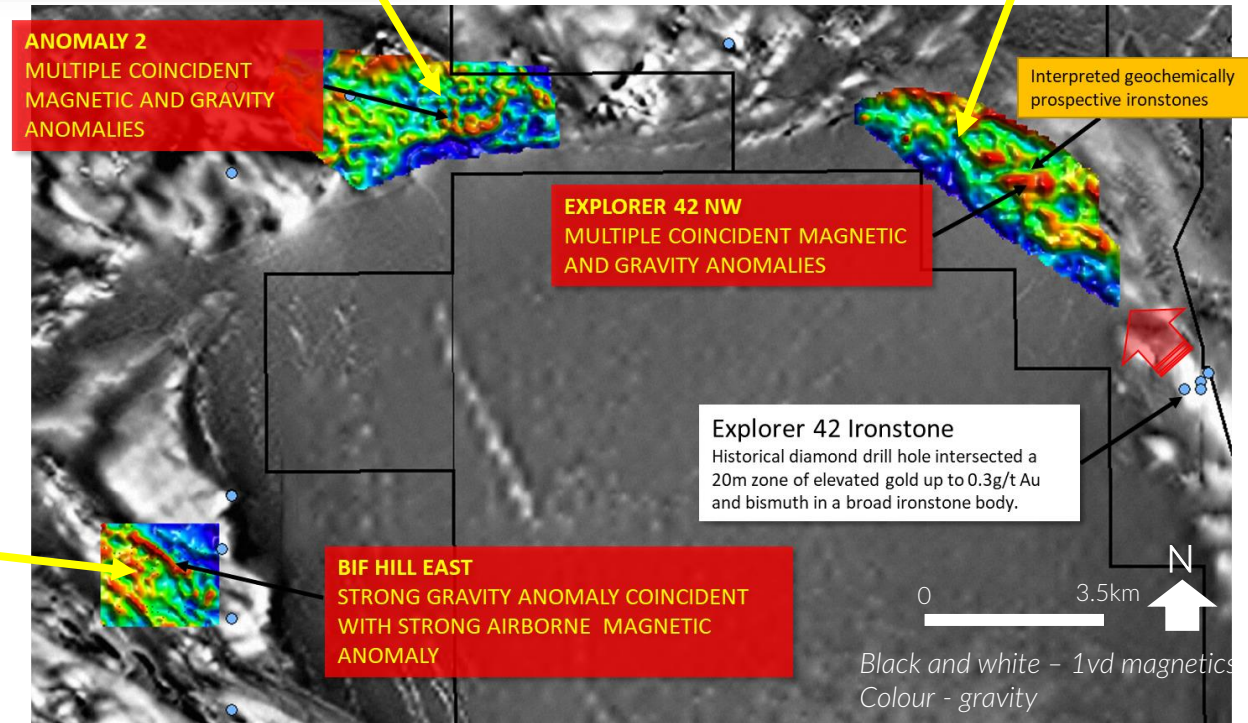
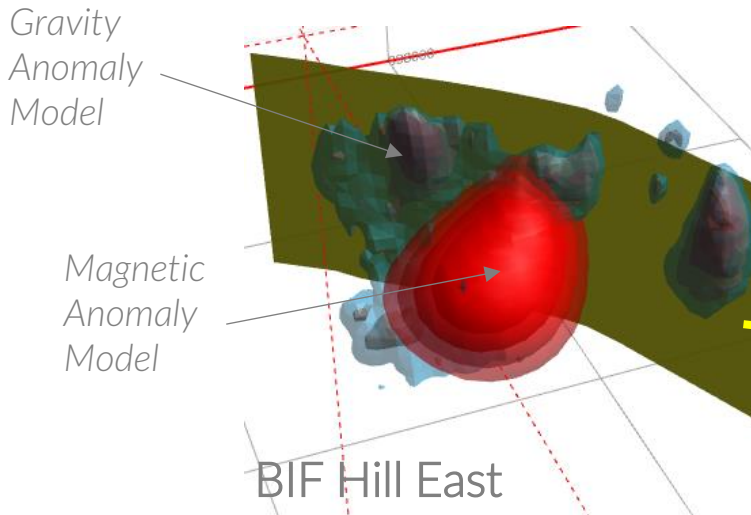
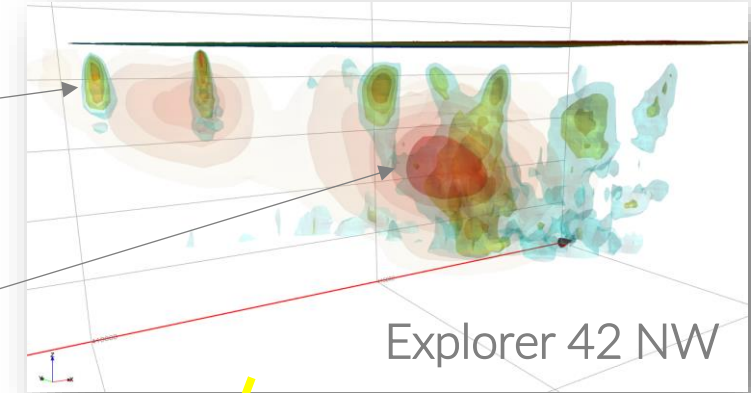
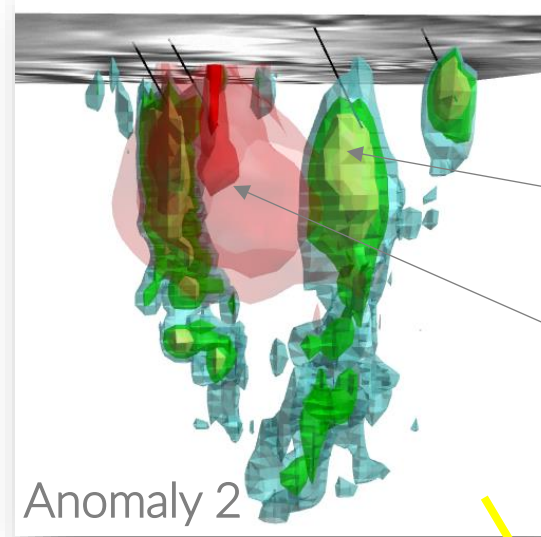
- Situated along strike of the Rover mineral field
- Multiple coincident magnetic and gravity targets
- Geochemically prospective ironstones intersected in historic drilling

Rover East Project



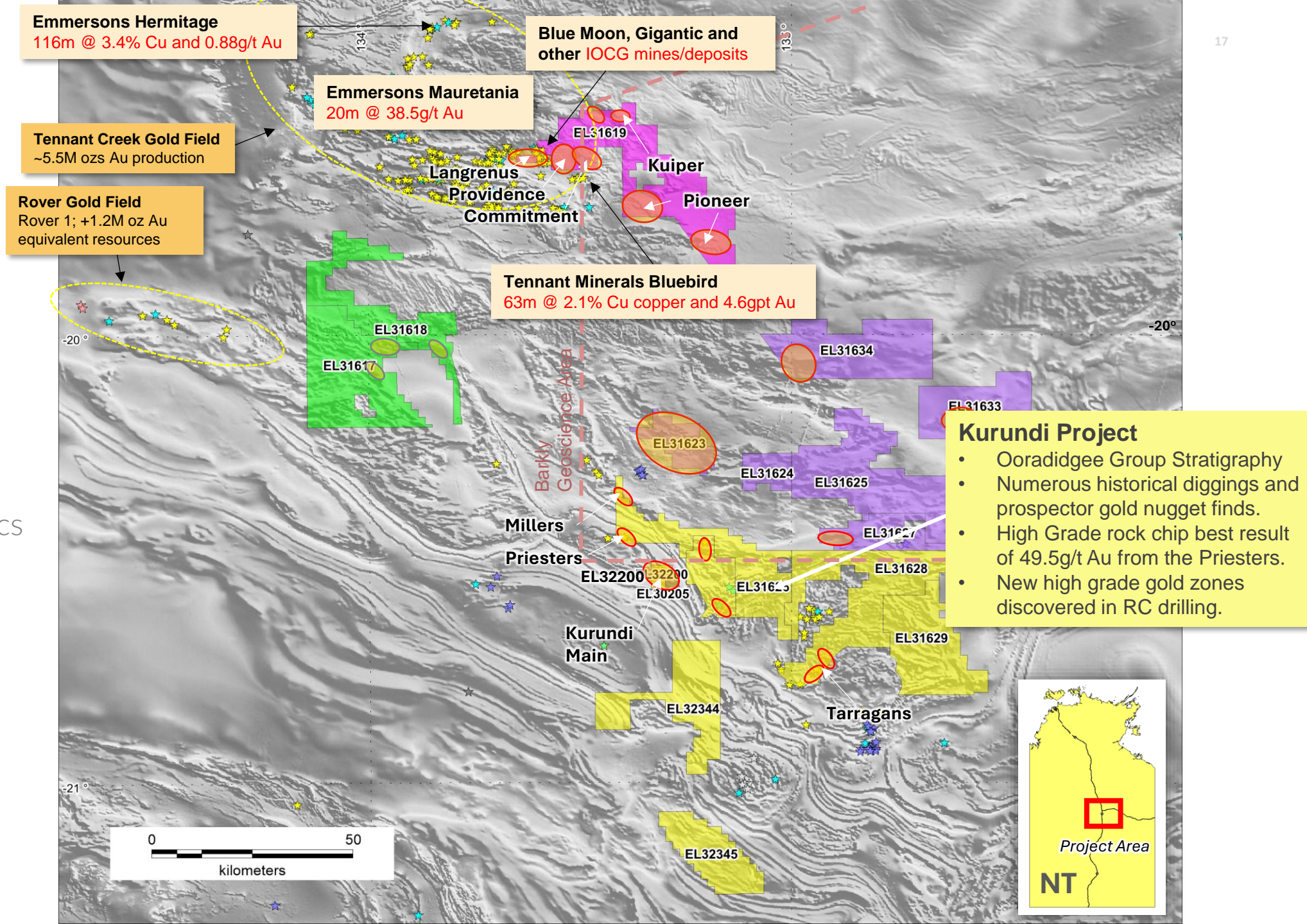
Rover East Project

- Coincident Magnetic/Gravity Targets
- Structural Complexity
- Known geochemically anomalous ironstones (Explorer 42)



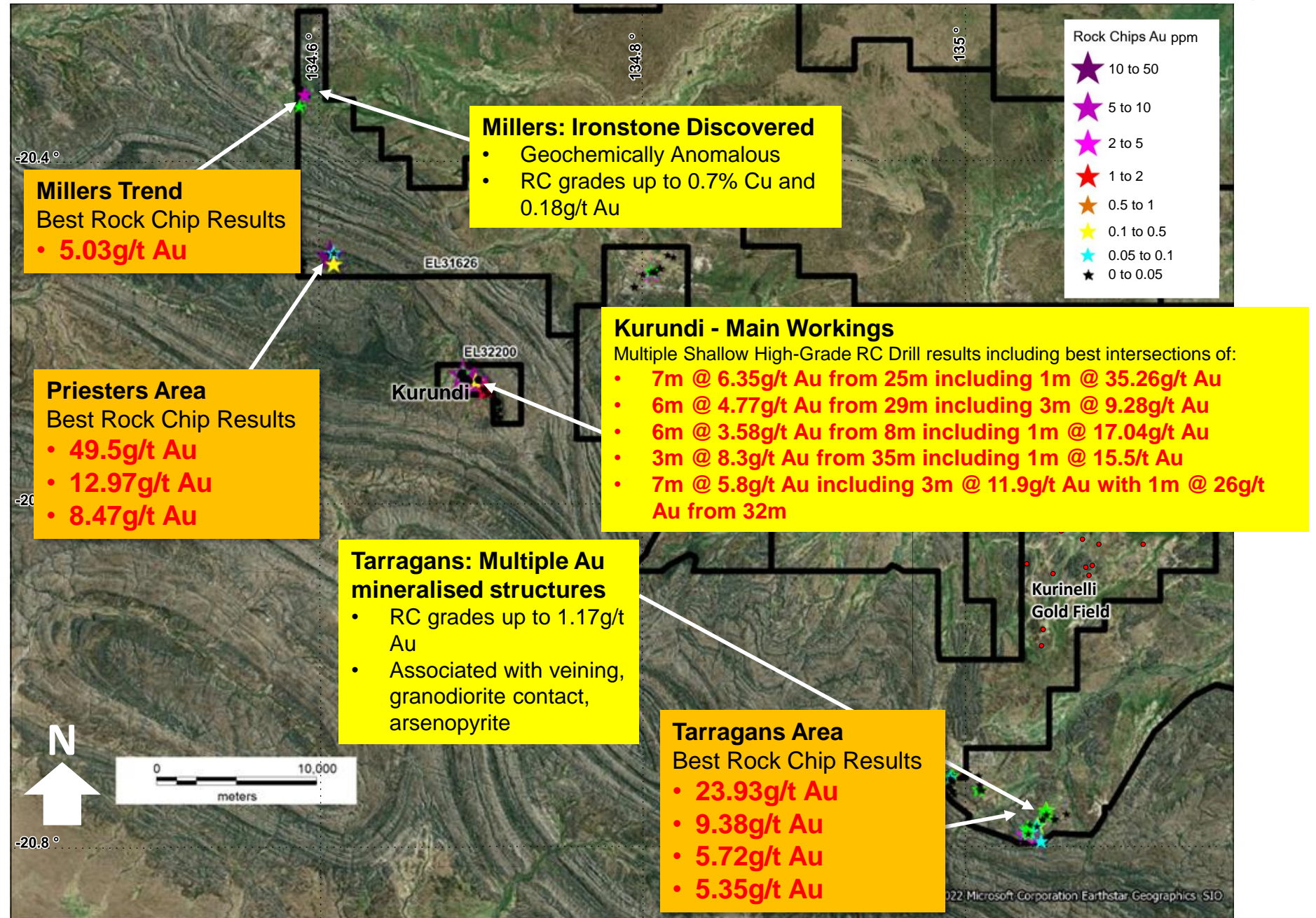
Kurundi Project

- Ooradidgee Group targets
- NOT under cover
- Association with the Edmirindgee Volcanics and surrounding sandstones
- Anticlinal/Dome structures



Kurundi Project

- Results Overview



Kurundi

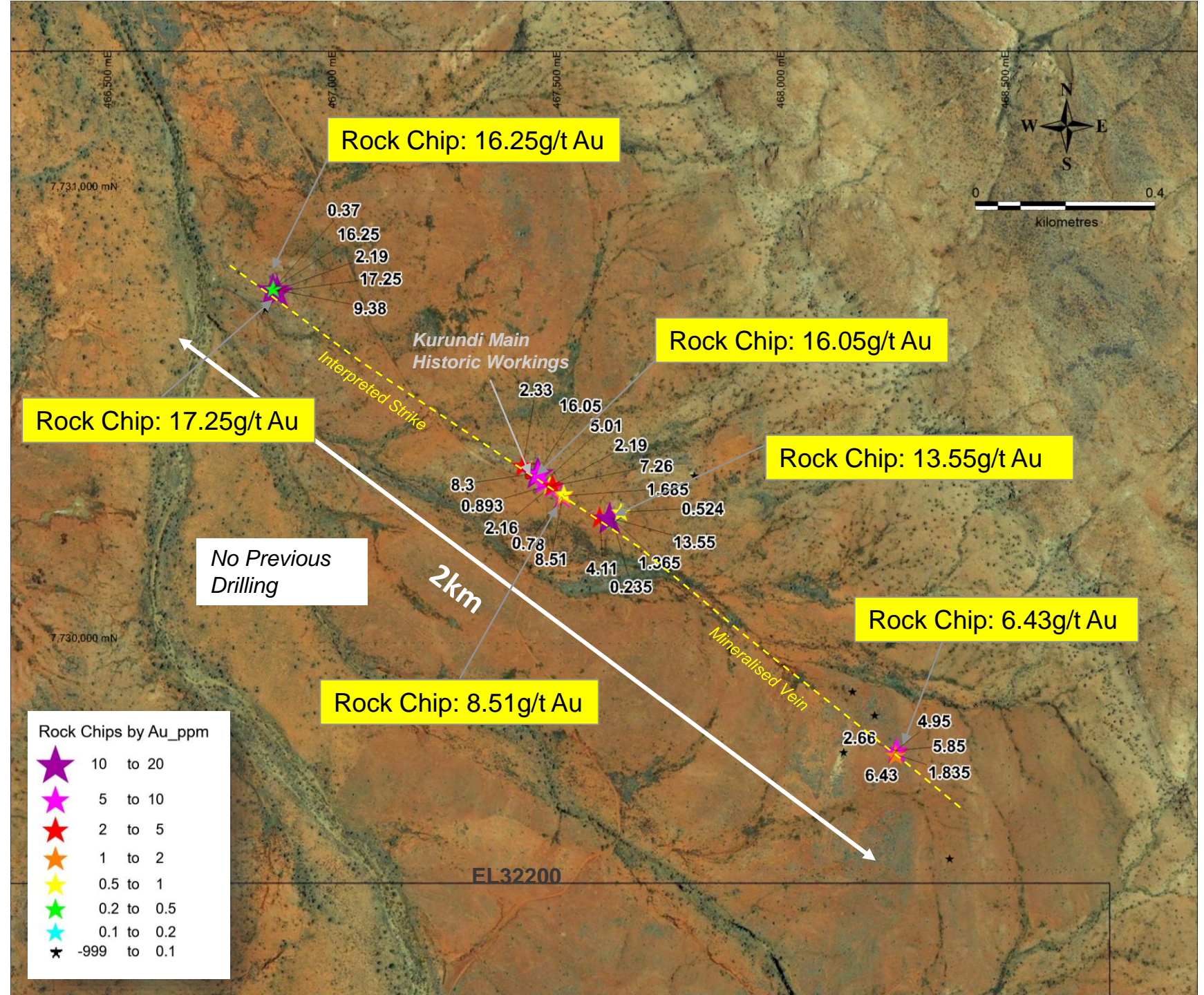
Initial Reconnaissance returned excellent rock chip results along a 2km strike:

Best Rock Chip Results:

- **16.05g/t Au**, 141ppm Ag, 6.4% Cu from veining at the main Kurundi workings
- **13.55g/t Au**, 124ppm Ag, 0.37% Cu from veining over 100m SE of the main Kurundi Workings
- **17.25g/t Au**, 115ppm Ag from veining 700m NW of the Kurundi workings
- **16.25g/t Au**, 138ppm Ag, 0.18% Cu from veining 700m NW of the Kurundi workings

- **Multiple high grade gold results**
- **Along an interpreted 2km strike**

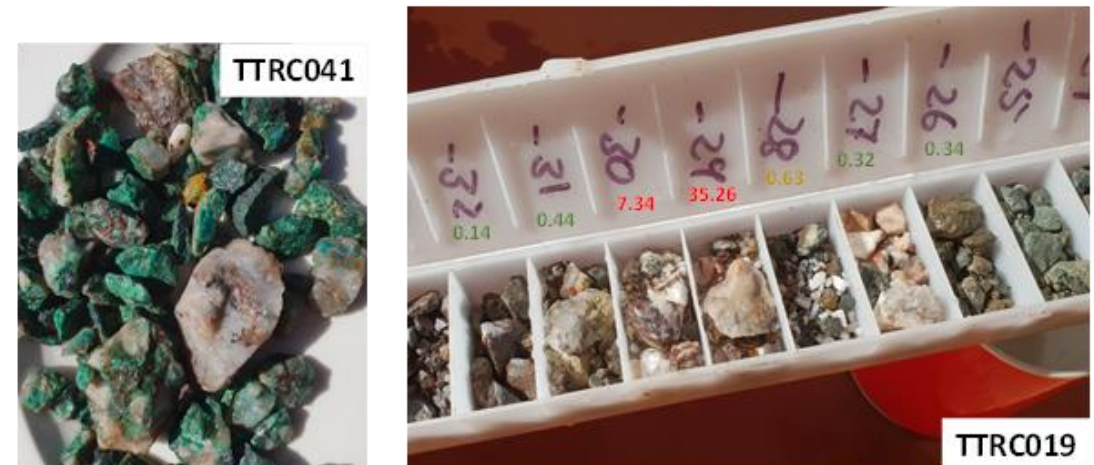
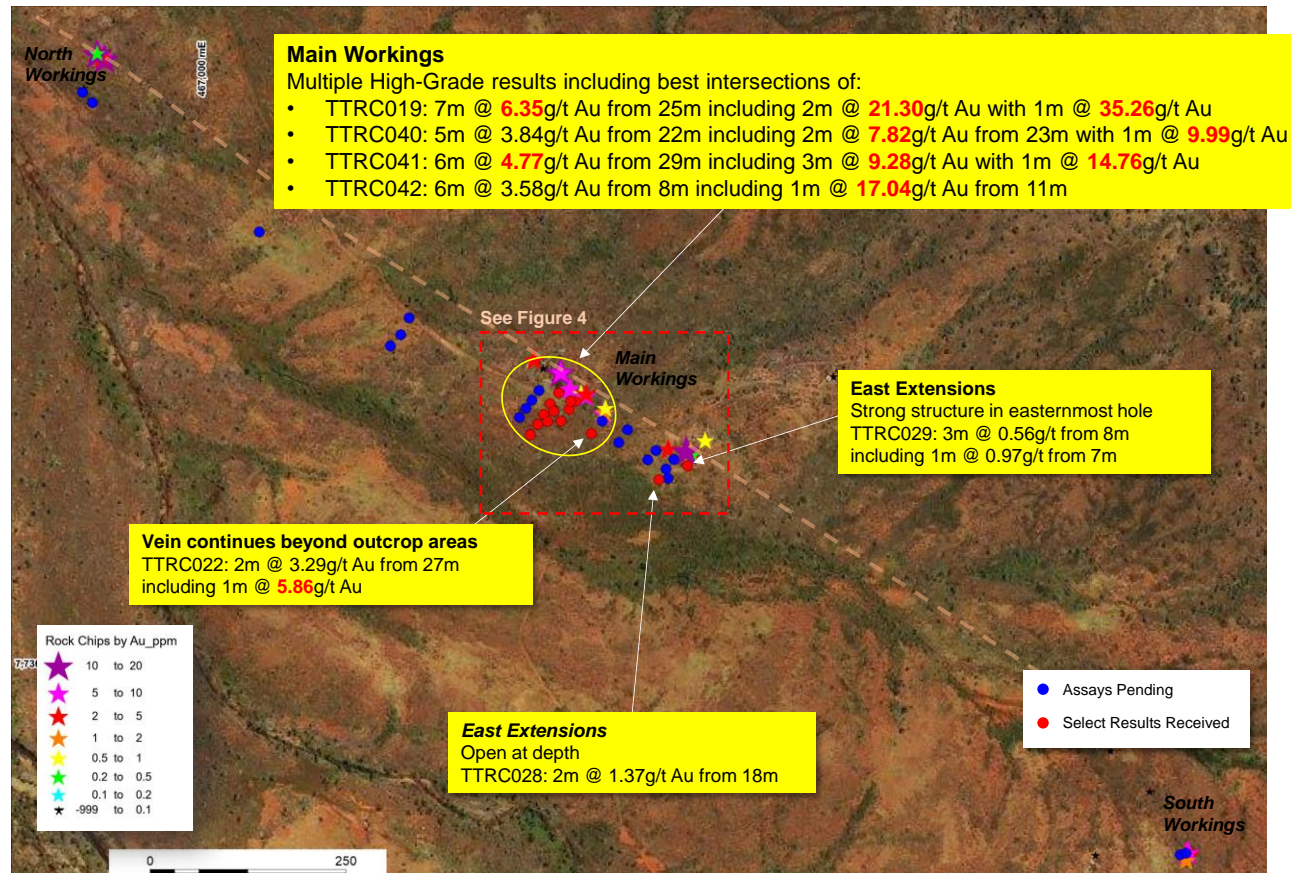
- **Alluvial Gold Potential** – Tenement contains main creek that collects runoff from the whole anticline that contains multiple high grade nuggety gold deposits



Kurundi Drill Results

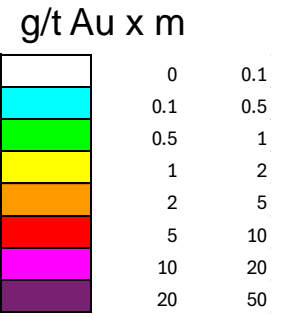
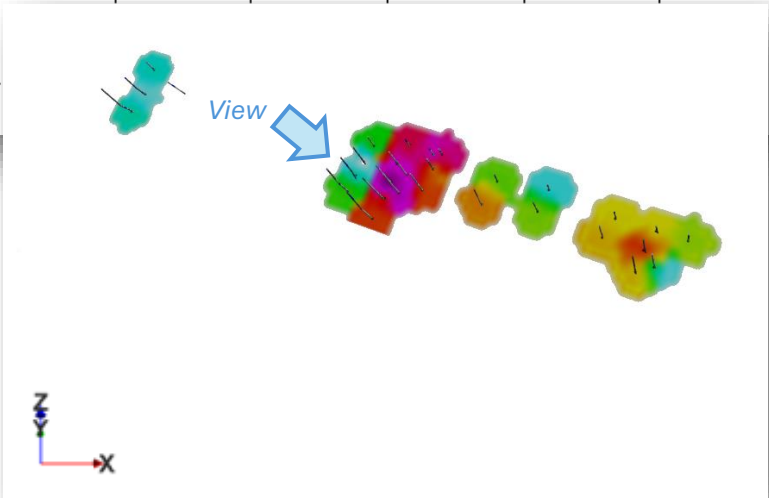
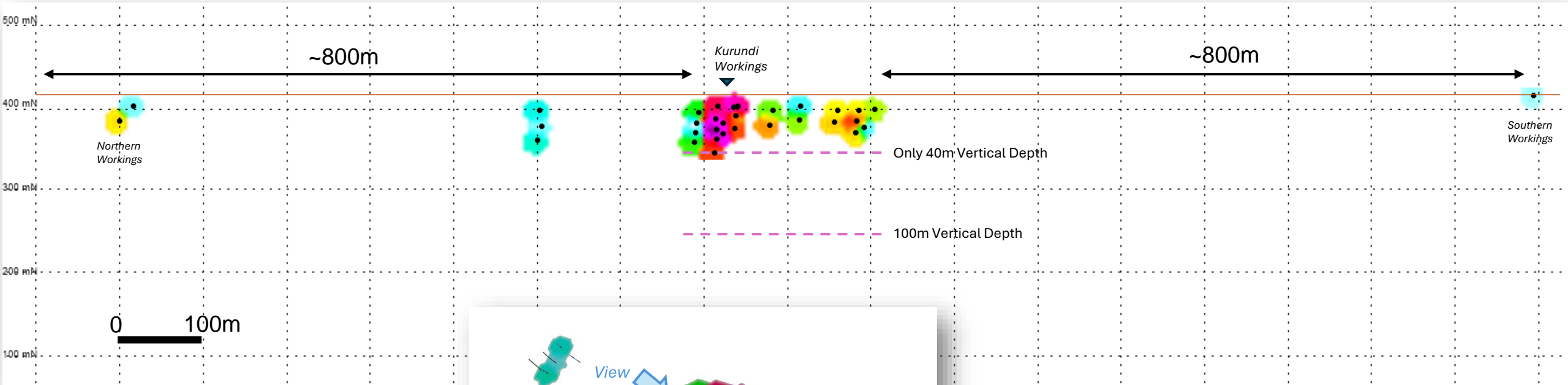
2022/24 RC drilling returned high grade gold results from a shallow dipping mineralised quartz vein within a broader shear zone

- **7m @ 6.35g/t Au** from 25m including **1m @ 35.26g/t Au**
- **6m @ 4.77g/t Au** from 29m including **3m @ 9.28g/t Au**
- **6m @ 3.58g/t Au** from 8m including **1m @ 17.04g/t Au**
- **3m @ 8.3g/t Au** from 35m including **1m @ 15.5/t Au**
- **7m @ 5.8g/t Au** including **3m @ 11.9g/t Au** with **1m @ 26g/t Au** from 32m



Long Projection of Kurundi Main 2022 Results – view perpendicular to vein

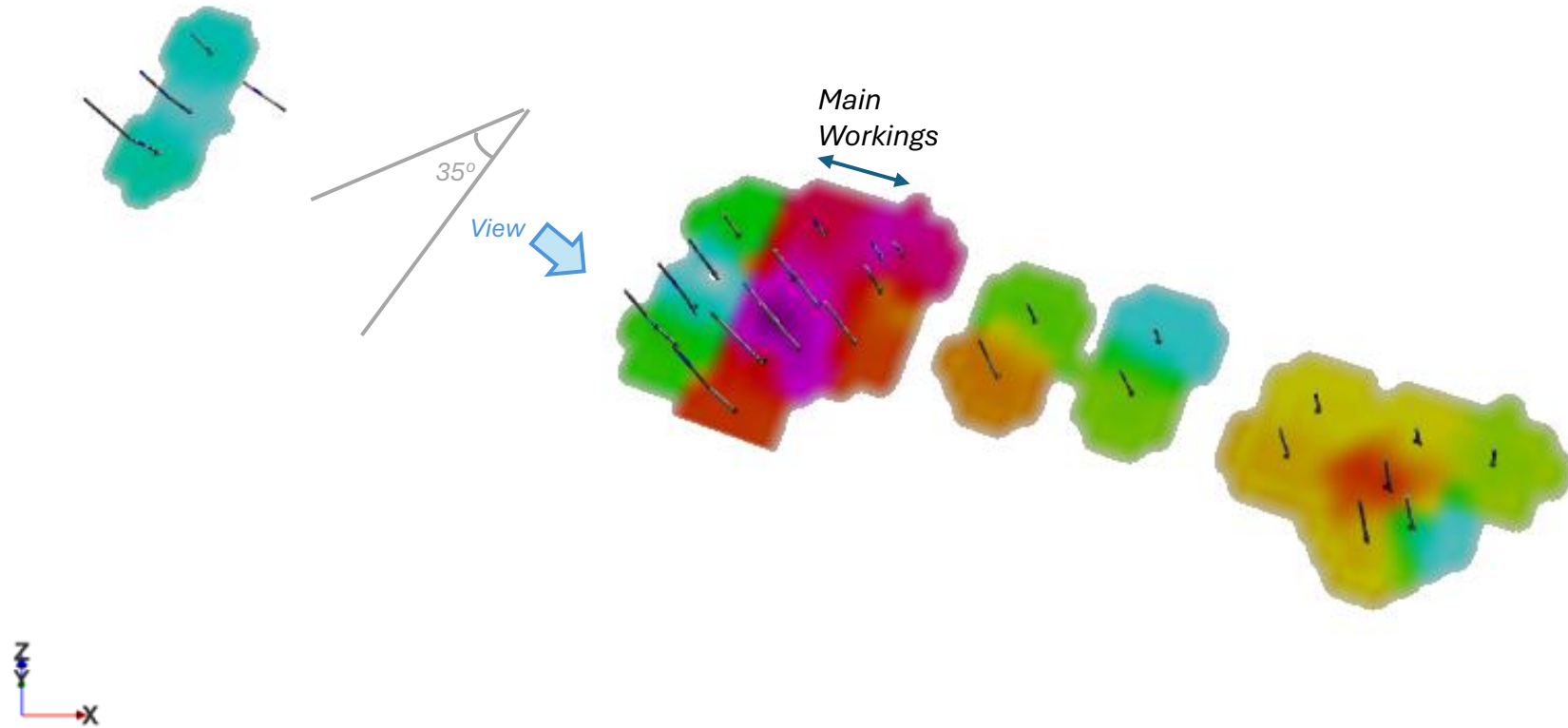
Coloured by intersection grade x width



Long Projection of Kurundi Main 2022 Results – projection perpendicular to vein

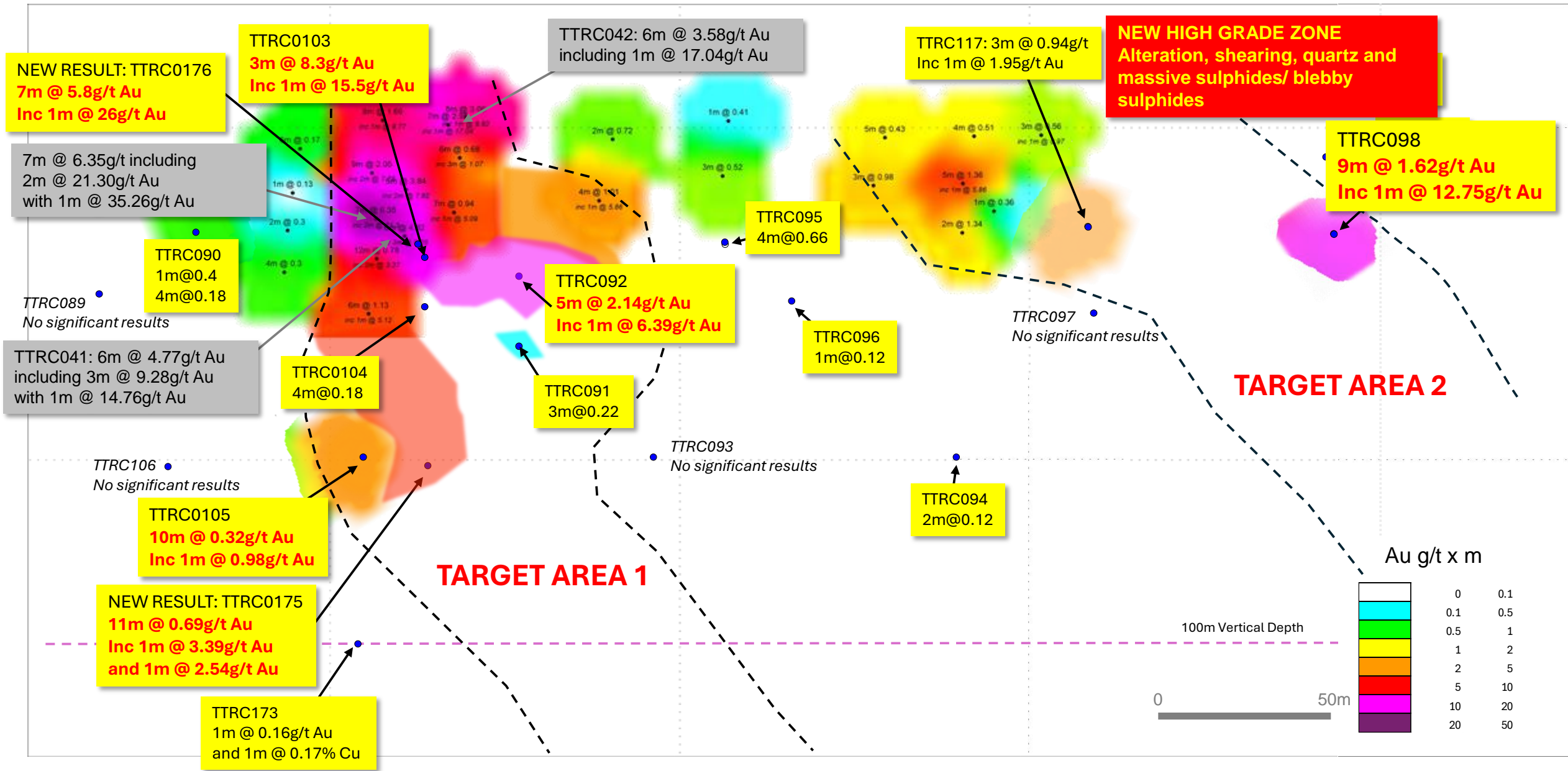
Coloured by intersection grade x width

3D View



Long Projection of Kurundi Main Area With 2024 Results

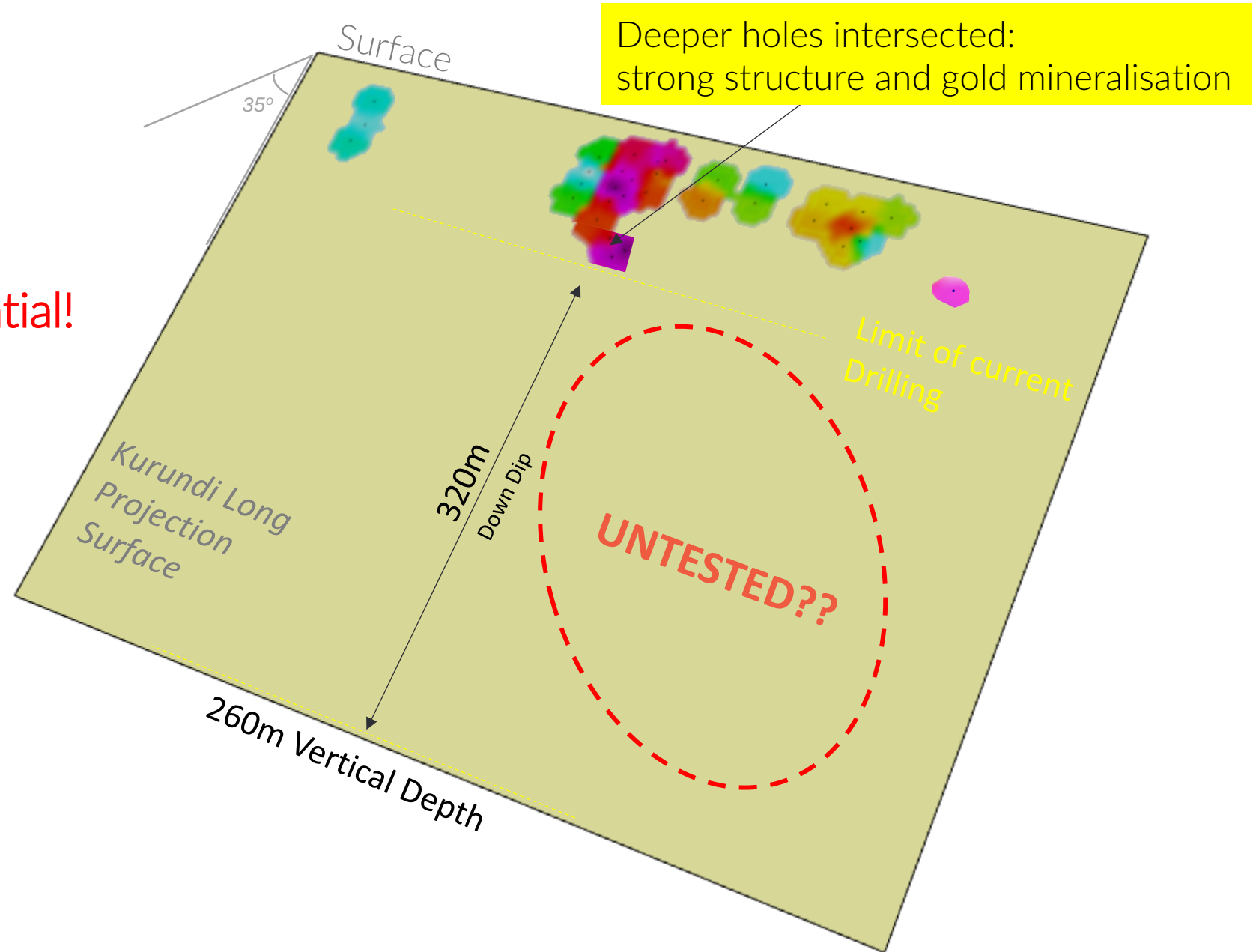
Long projection view of the Main Kurundi mineralized zone beneath the central workings area. The view is perpendicular to the main vein which dips approximately 35° towards 215°.



Kurundi

Barely Tested Depth Potential!

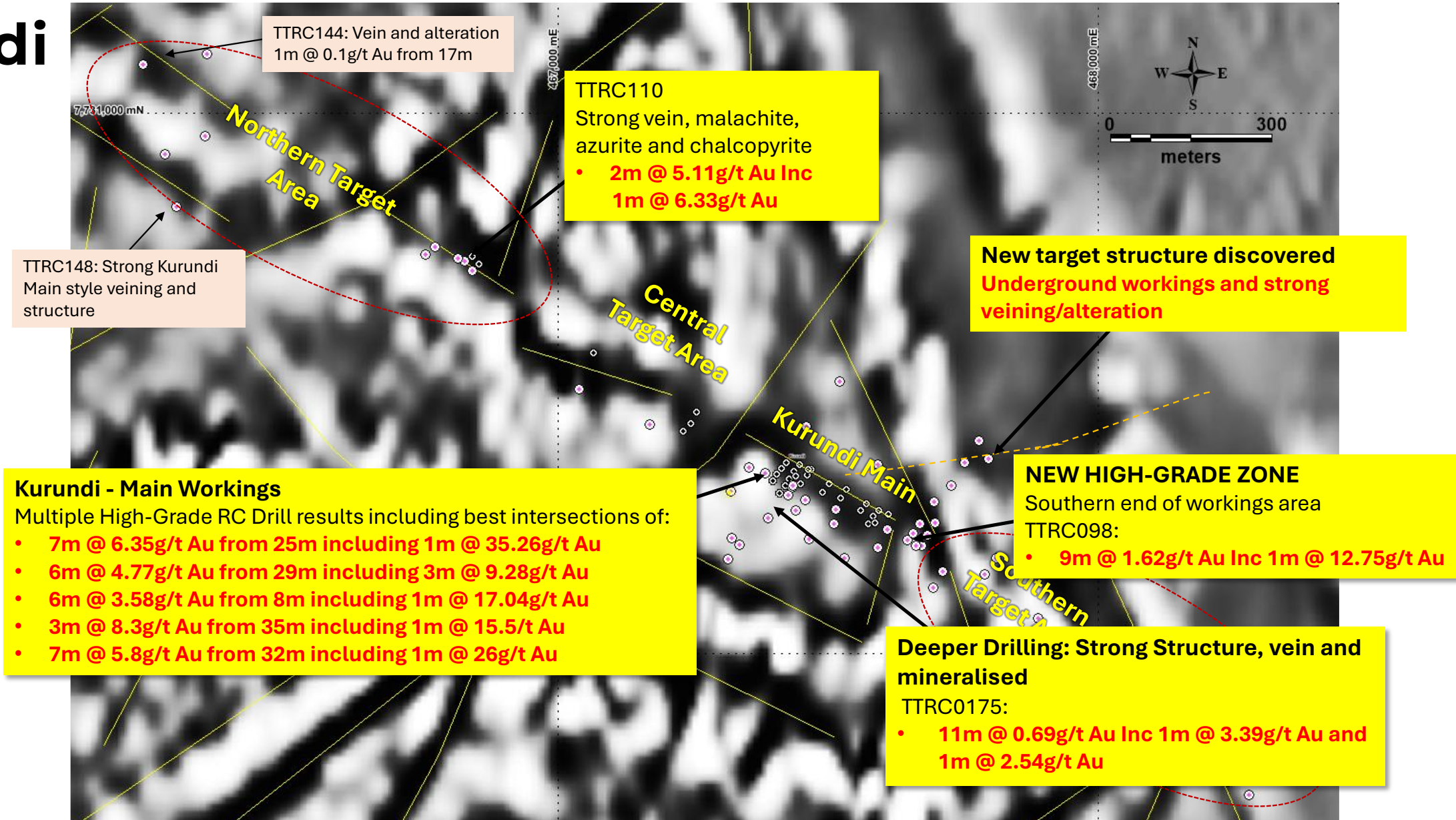
3D conceptual image showing extension of long projection plane to a 260m vertical depth demonstrating the RC drillable down dip potential on the Kurundi Structure



Drone Magnetics (1vd) with best 2022/2024 RC drill results.

The presence of veining, shearing and alteration reduces the magnetic signature of the host Proterozoic basalt and can be seen in the 1VD magnetic image, assisting in targeting of extensions and new mineralised structures

Kurundi



Conclusions

Exploration has:

- Confirmed presence of Warramunga equivalent rocks under thin Cambrian cover at multiple target areas
- Shown that Cambrian Cover is shallow as interpreted
- Intersected significant structures, iron alteration zones and geochemically anomalous ironstones at multiple locations giving excellent target areas for follow up work
- Added confidence to KRR's exploration model targeting IOCG deposits in Warramunga equivalent rocks under Cambrian cover
- The strong persistent mineralisation and structure at Kurundi adds confidence to other gold targets in the Kurundi Project area (hosted by Ooradidgee Group rocks)
- The use of multiple geophysical approaches, combined with interpreted geology and prediction of signatures from known to unknown, has enabled the generation of quality exploration targets.
- Multiple quality geophysical targets still to be tested with work already commenced for 2025
- Depth extensional drilling planned to commence at Kurundi in April 25

