

Transformational acquisition of Thaduna and Green Dragon Copper Deposits, WA

June 2026

Portfolio of copper resources, drill-ready exploration targets and expansive exploration upside



BOA

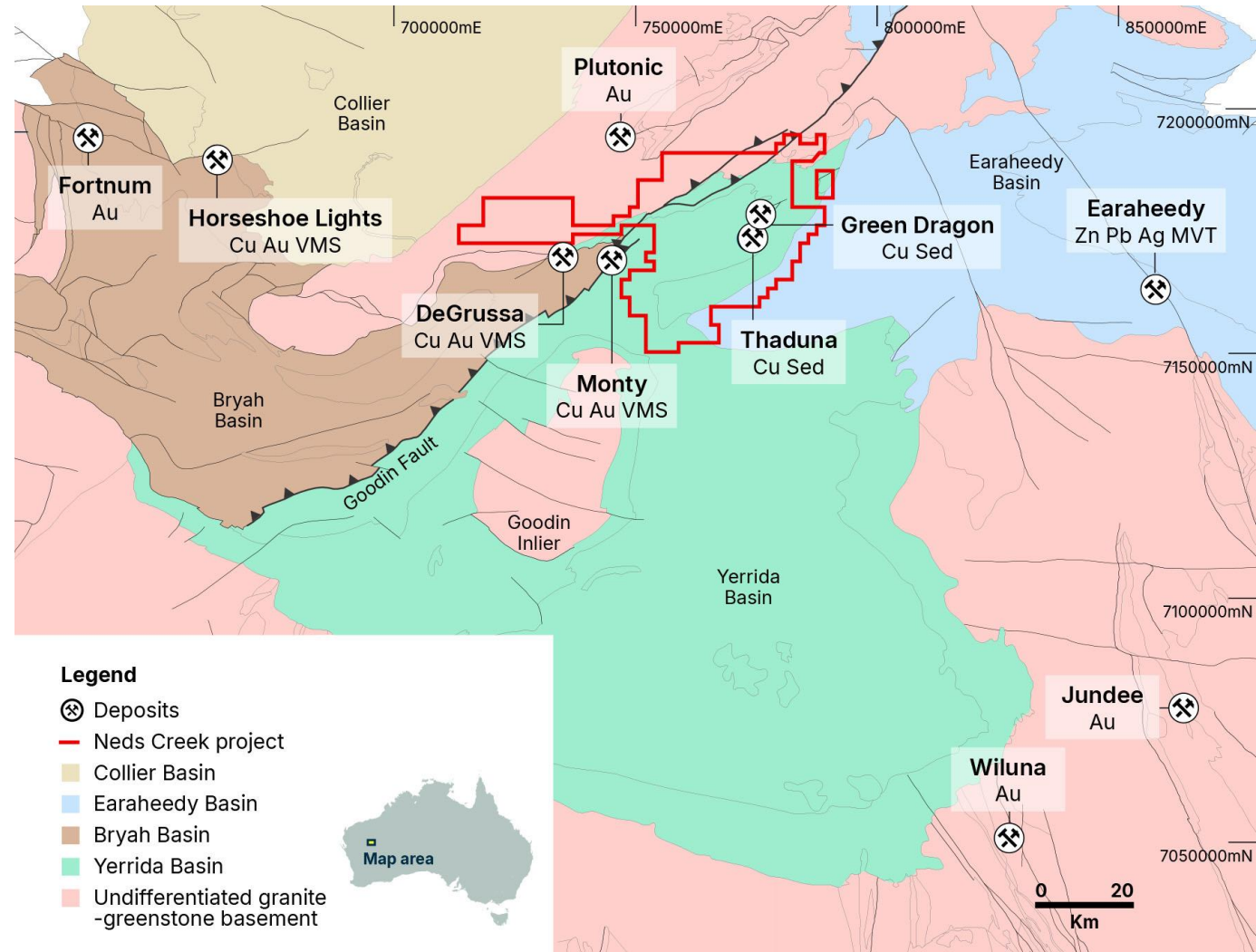
Resources

Neds Creek Copper Project, Murchison Copper Belt, WA

Cu

- Acquisition of **Thaduna and Green Dragon copper deposits** and additional exploration tenements in the Neds Creek Copper Project^{F1}
- Thaduna and Green Dragon contain a combined **Mineral Resource Estimate of 5.3 Mt @ 2.3% Cu for 121 Kt contained Cu**^{F1}
- Acquisition consolidates and expands BOA's footprint in the Murchison Copper Belt to cover ~1,378km² and include:
 - **Thaduna and Green Dragon Mining Leases**
 - 7 Granted Exploration Licences^{F4}
 - 5 Granted Prospecting Licences
 - 11 Exploration Licence applications
- **Sandfire Resources to become a substantial shareholder** with approximately 6.2%
- **Adrian Griffin** joins board as **Non-Executive Director**
- Cash position of approx. **\$3.2M supports the transaction and 2026 drilling plans**^{F3}

Post transaction tenement holdings in the Murchison Copper Belt, WA



Corporate summary



Strong shareholder base, funded for transaction and planned drilling

Capital structure	Shares	Options
Pre Transaction	290,622,246	469,386
Consideration	155,424,587	76,919,407
Post Transaction	446,046,833	77,388,793

\$0.057

Share price²

\$16.6M

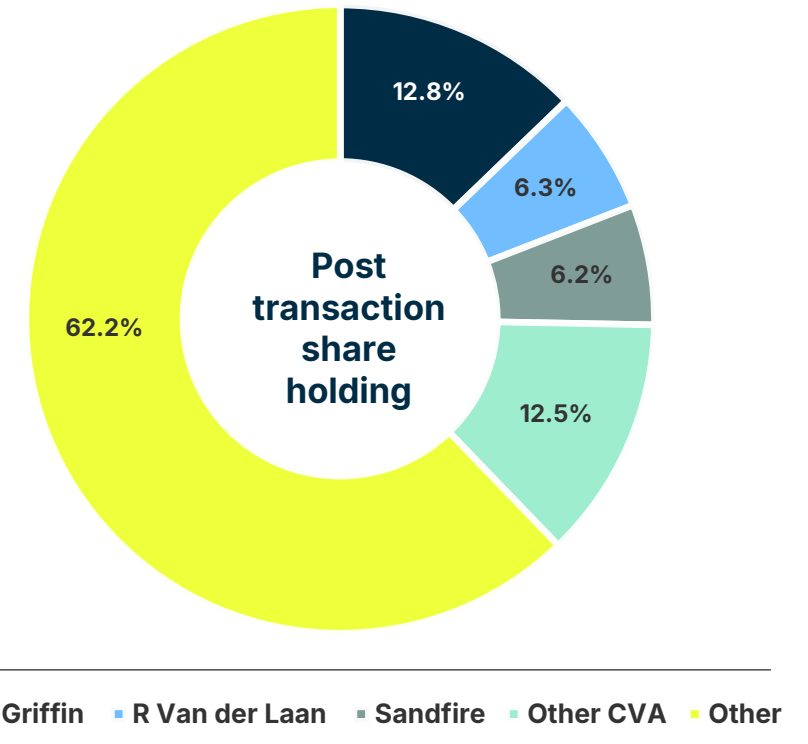
Market Cap²

\$3.2M

Cash³

\$0M

Debt



1. Unlisted options BOAAB (469,386 at \$0.42, expiring 30/06/2026) and CVA consideration options (76,919,407 at \$0.10, expiring 3 years from issue, subject to shareholder approval)

2. Pre-transaction: Market close 17 June 2026

3. As reported by BOA to the ASX "Mar26 Quarterly Activities Report", 30 April 2026

Post transaction board and management



Board and team with extensive experience in capital markets, resource exploration and discovery and growing shareholder value.



Cath Norman

Chair, Managing Director



Graeme Purcell

Director



Adrian Griffin

Director



Mark Tomlinson

Director

David Reid, Exploration Manager

Nik Karakashov, Senior Geologist and Exploration Manager Lithium and Nickel (WA)

Alex Knight, Group Accountant

Lisa Wynne, Company Secretary

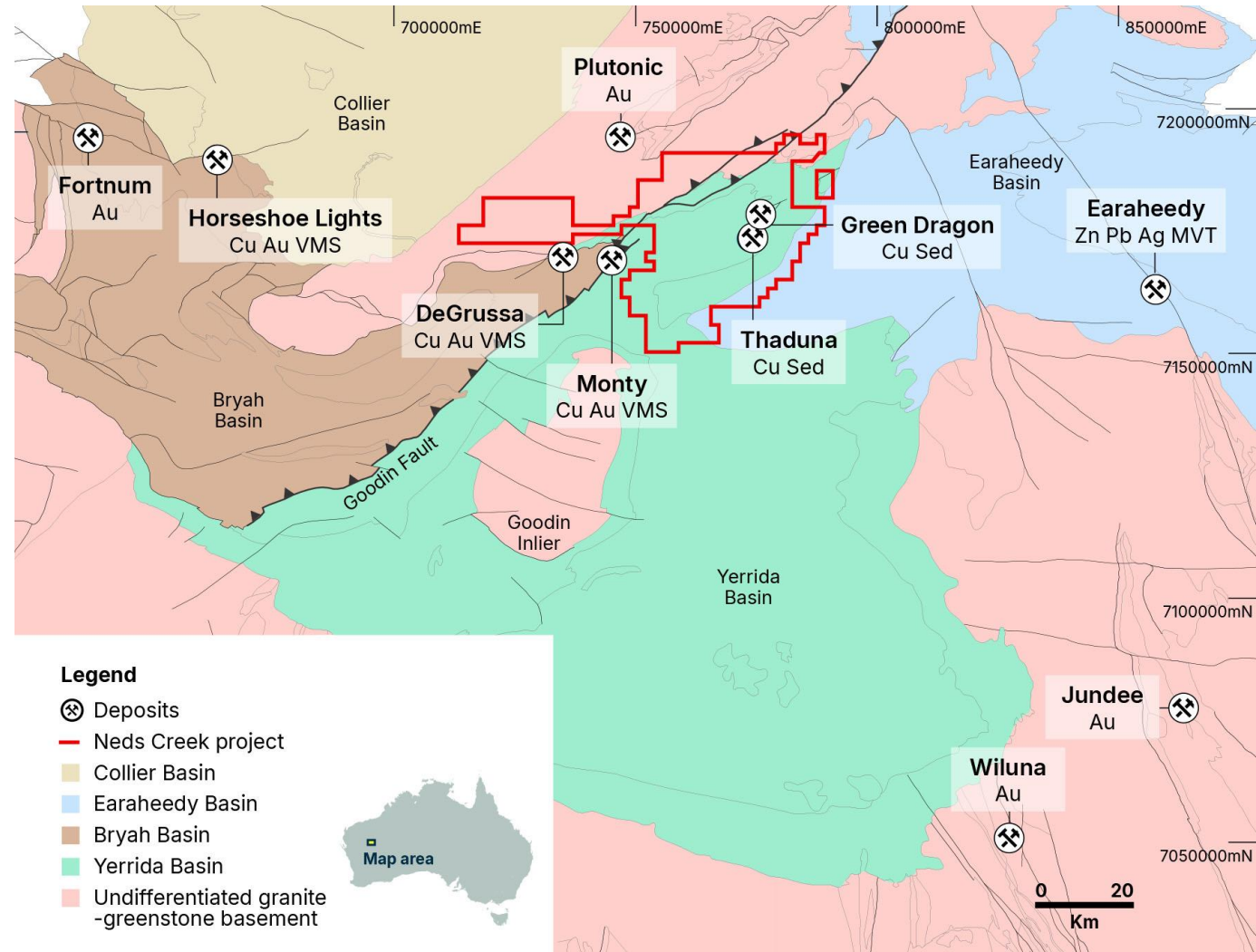


Acquiring Thaduna and Green Dragon Copper Deposits

Cu

- Materially strengthens BOA's copper portfolio by adding advanced JORC 2012 compliant copper resources
- **Provides a significant platform for resource growth and potential future development**
- 100% ownership creates a controlling position within the northern portion of the Yerrida Basin
- Multiple prospects, lightly tested, **with ore grade intersections** already identified for immediate drill testing
- **Resource definition and exploration drilling planned to commence late July 2026**

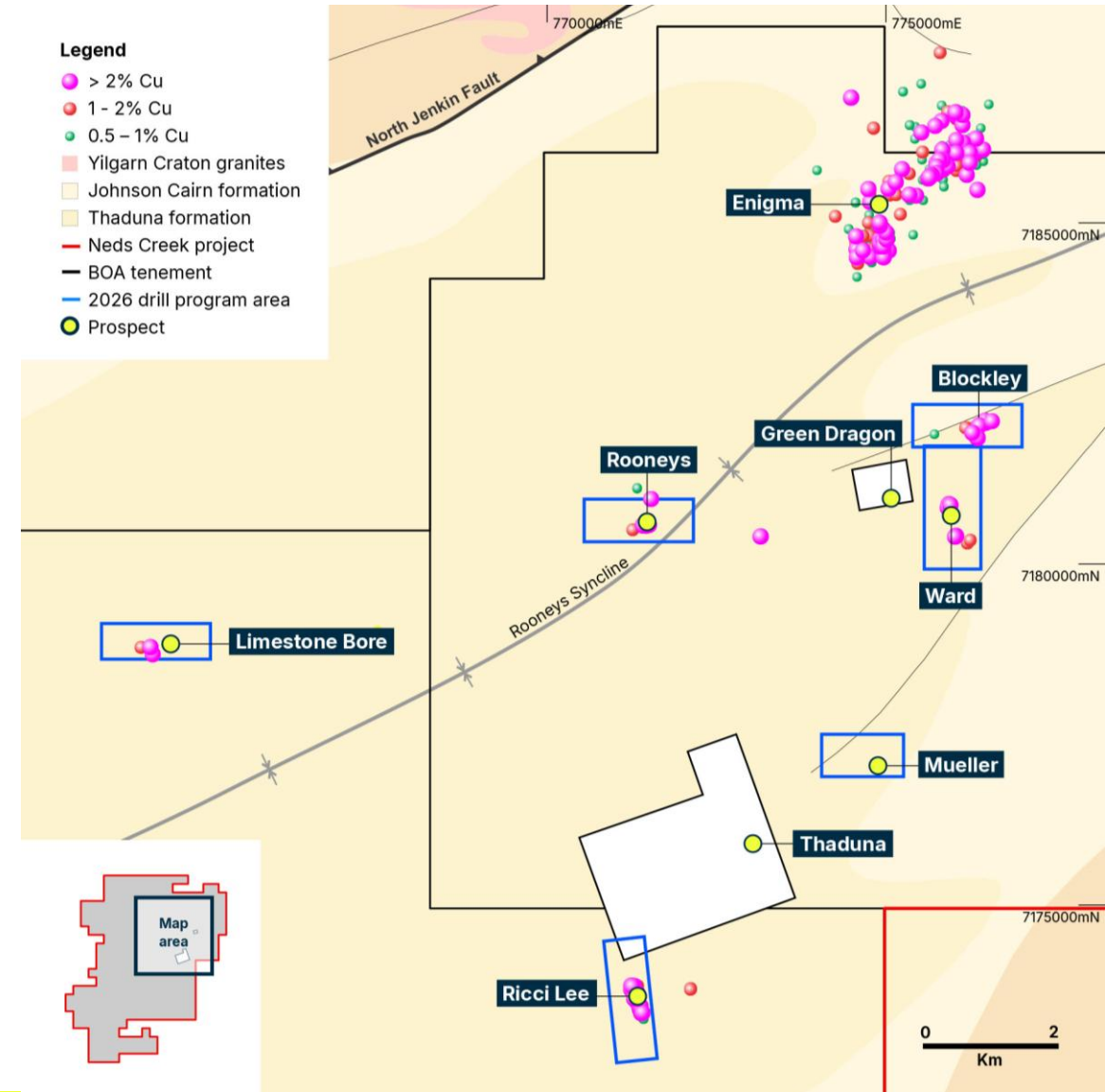
Post transaction tenement holdings in the Murchison Copper Belt, WA



Neds Creek Project - Resources and exploration focus



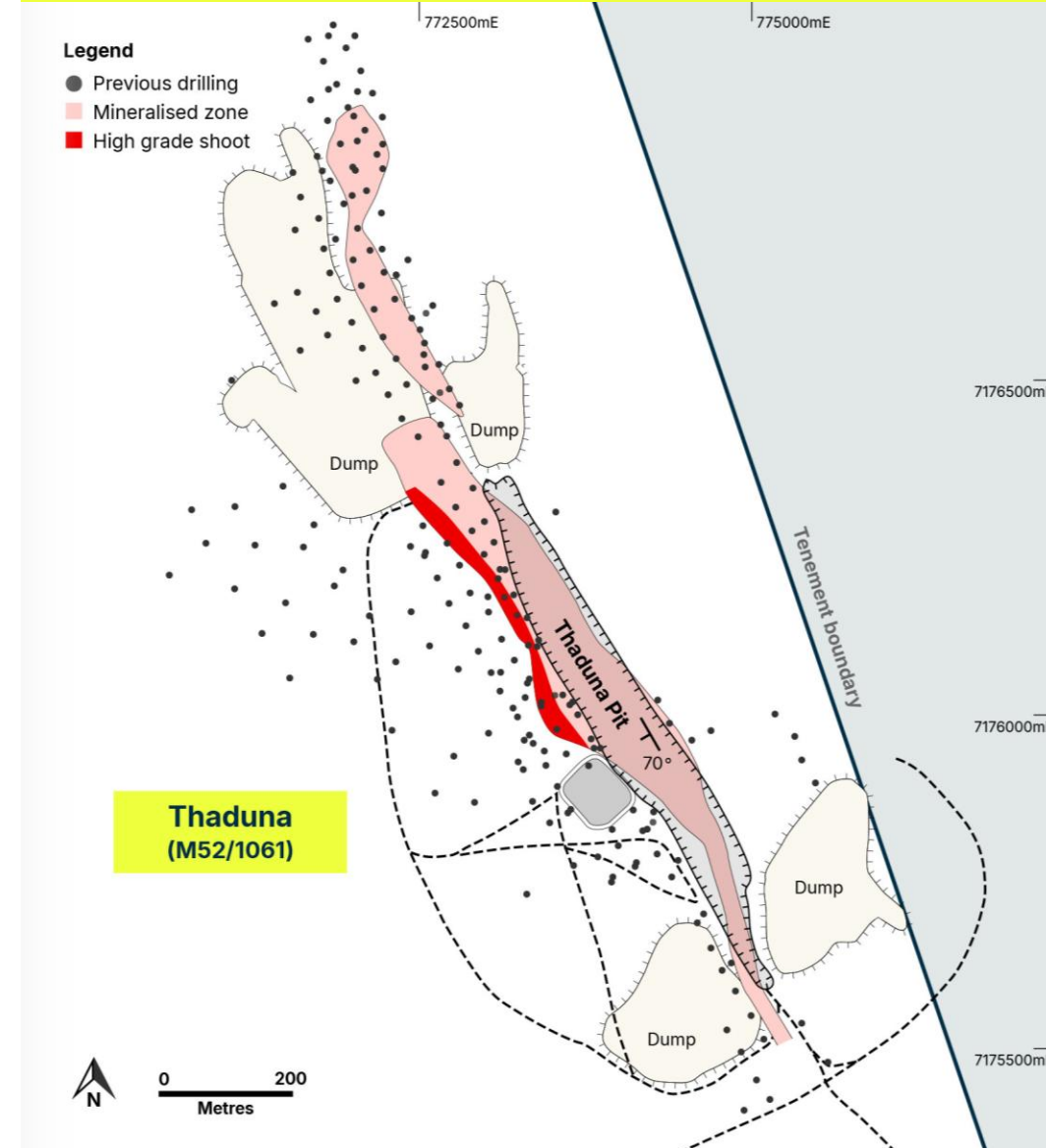
- Focus on northern Yerrida Basin, exploring known structurally controlled epigenetic copper deposits with the potential for stratigraphically controlled mineralisation
- **6 high-priority targets identified from exploration**
- Simple exploration model, Thaduna and Green Dragon analogues
- Structural targets with good geochemical and geophysical signatures
- Hosted in Thaduna Formation sediments
- **Ricci Lee** is the most advanced – **priority focus of 2026 drilling for immediate resource definition**^{F2}
- Other targets have ore grade intersections^{F2}
- 2026 focus to identify mineralisation controls – structural, stratigraphic
- Improved understanding enables broader basin-scale targeting (eg Enigma)



Thaduna copper deposit

- Resource of **4.1 Mt at 2.5% for 103 kt Cu^{F1}**
- Historical small-scale open pit from 1960s-70s
- 1,500m strike, NNW trending, steeply dipping
- Hosted in a carbon-filled brittle fault, with quartz-carbonate veining to >600m vertical depth
- **Open at depth**
- Lightly explored along structural trend, **potential repetitions along strike**

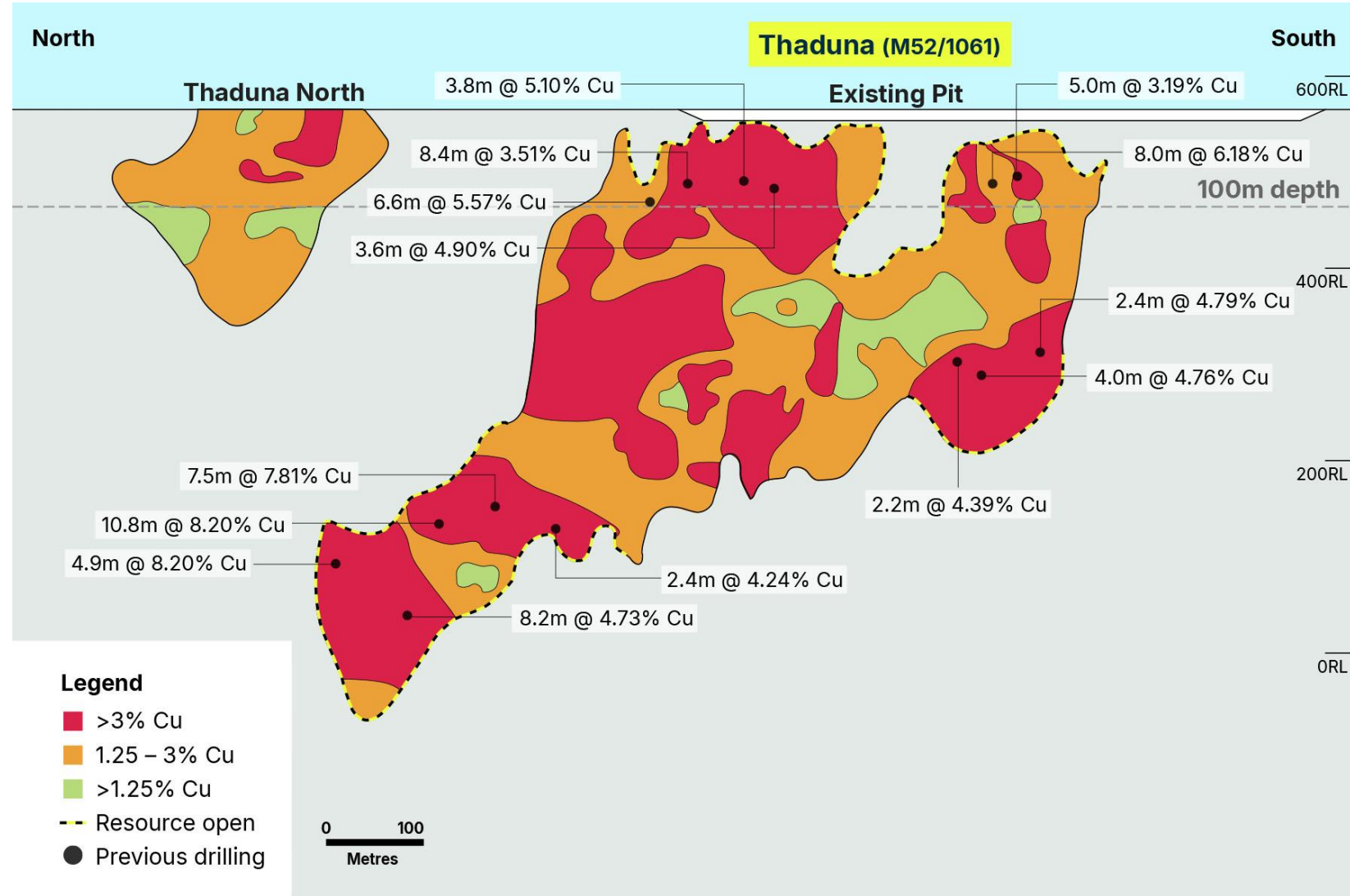
Resources	Category	Tonnes (Mt)	Cu (%)	Cu (Kt)
Thaduna	Indicated	2.0		
	Inferred	2.1		
	Total	4.1	2.5%	103
Green Dragon	Indicated	0.8		
	Inferred	0.4		
	Total	1.2	1.5%	18
Total Resource	Indicated	2.8		
	Inferred	2.5		
	Total	5.3	2.3%	121



Thaduna copper deposit ^{F1}

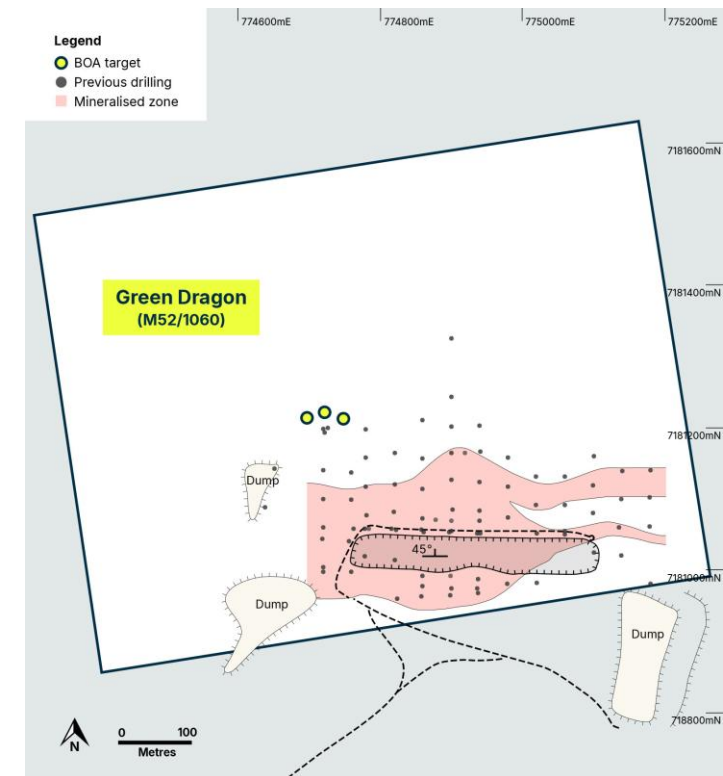
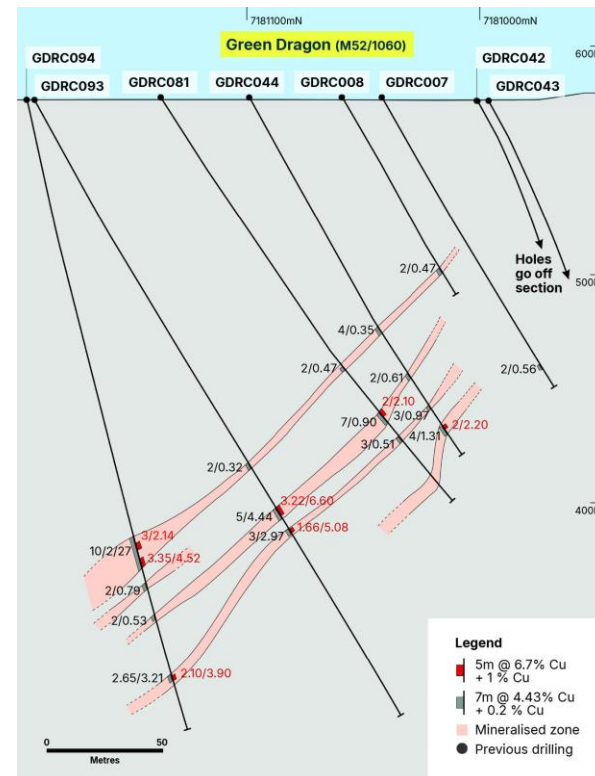
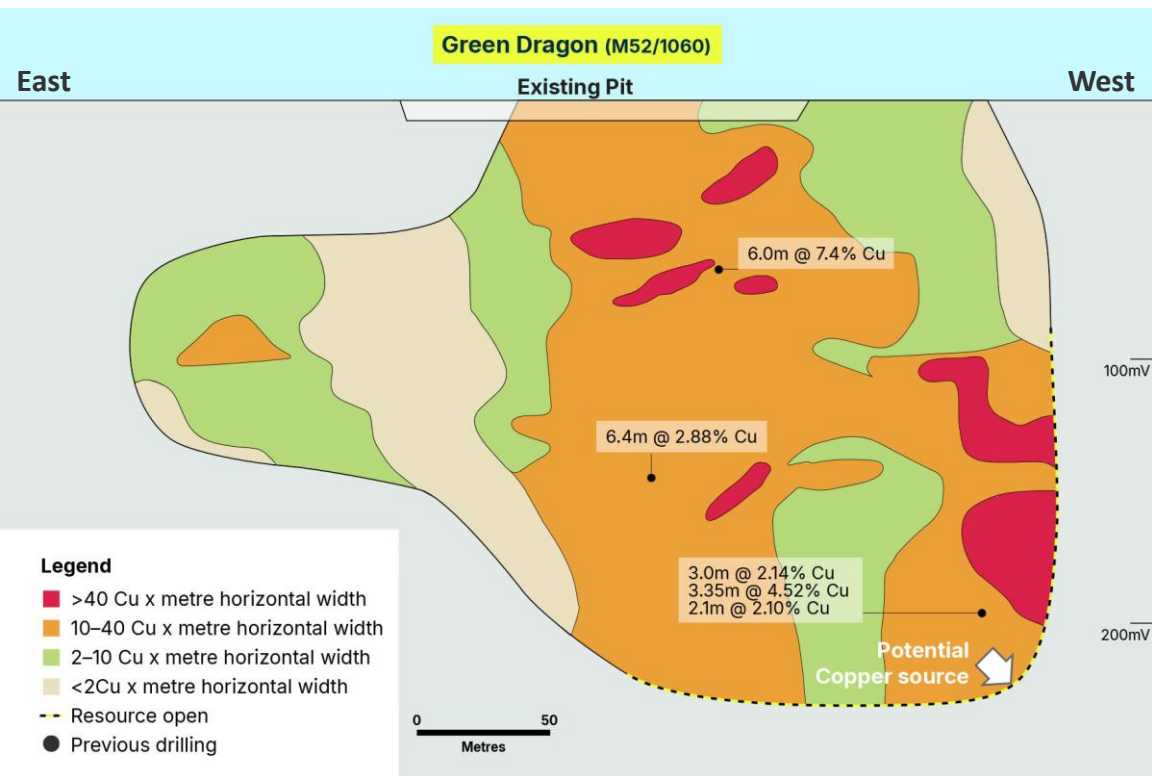
Cu

- Potential for resource growth by drill testing:
 - Upper portion and margins of resource envelope
 - **Open at depth** (down plunge)
- Moderate northerly plunge control
- Copper sulphide mineralogy displays vertical zonation (chalcopyrite to bornite) with increasing grade at depth
- Test for repetitions along strike of NNW trending Thaduna structural corridor



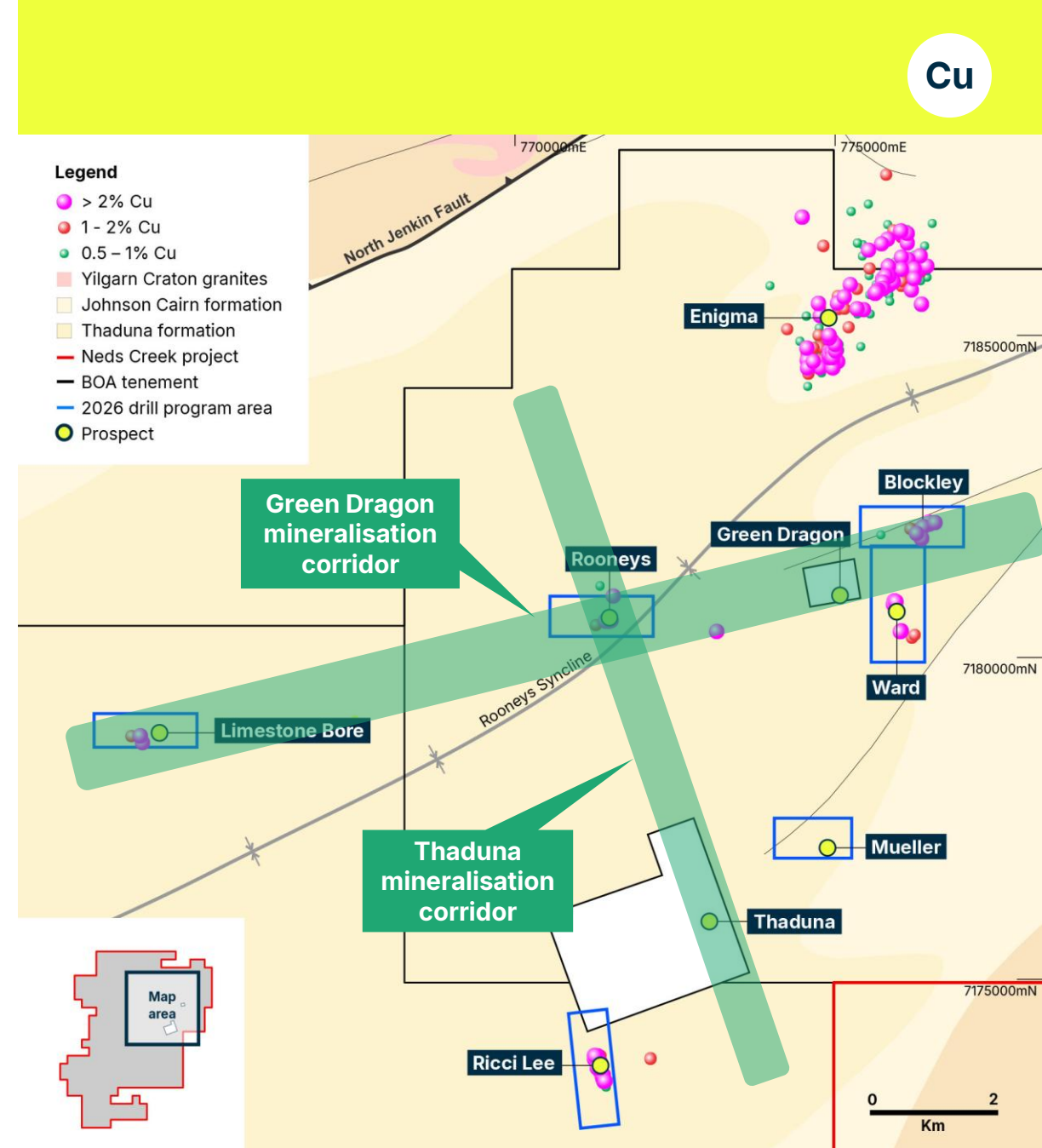
Green Dragon copper deposit ^{F1}

- Resource of **1.2 Mt at 1.5%** for **18 kt Cu**
- Historical small-scale open pit from 1960-70s, 300m strike, EW trending, moderately dipping to north
- Multiple lodes hosted in carbon-filled brittle fault zone to >200m vertical depth
- Open at depth (down dip and potential west plunge), primary target for drill testing to increase dimensions and upgrade resource
- Test for repetitions along strike of EW trending structural corridor



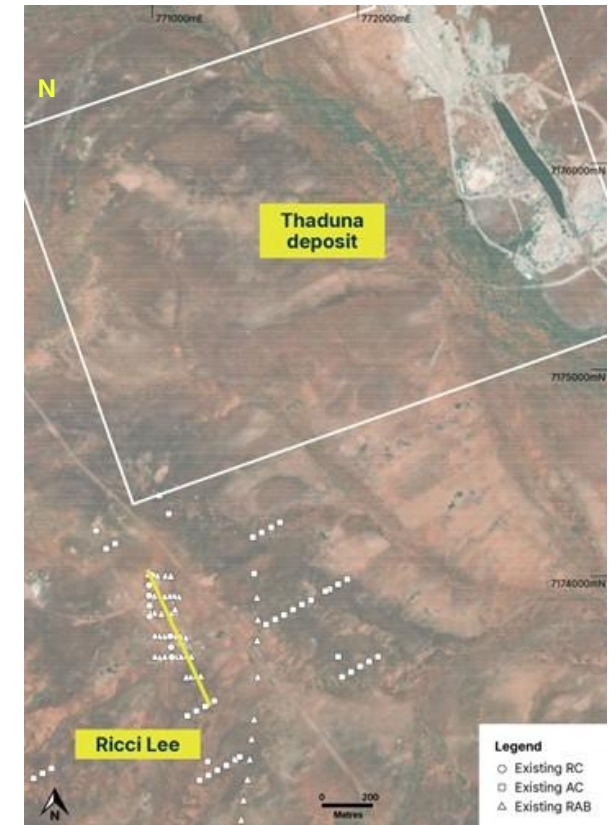
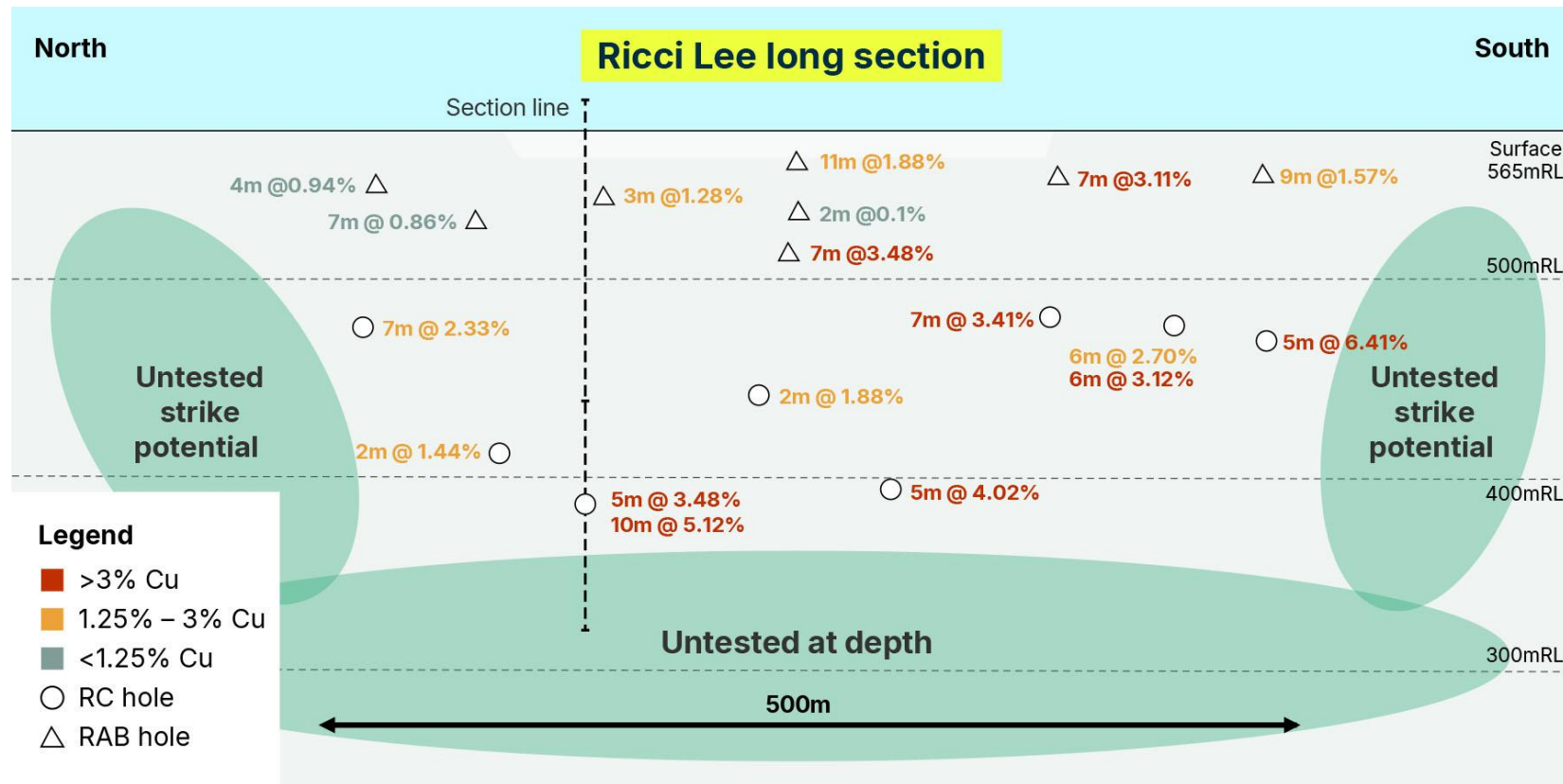
Other prospects

- **Multiple targets ready to drill**^{F2}
- Simple, straightforward exploration model and methodology
- Known **copper mineralised structural corridors** from Thaduna and Green Dragon
- **6 priority prospects** identified for drill testing – Ricci Lee priority for resource definition drilling
- Extensive geophysical, geochemical and drill datasets currently being integrated into **machine learning models to assist with additional target generation**, ranking and prioritisation
- **Ongoing exploration to expand pipeline for look-alike copper targets**



Ricci Lee Prospect

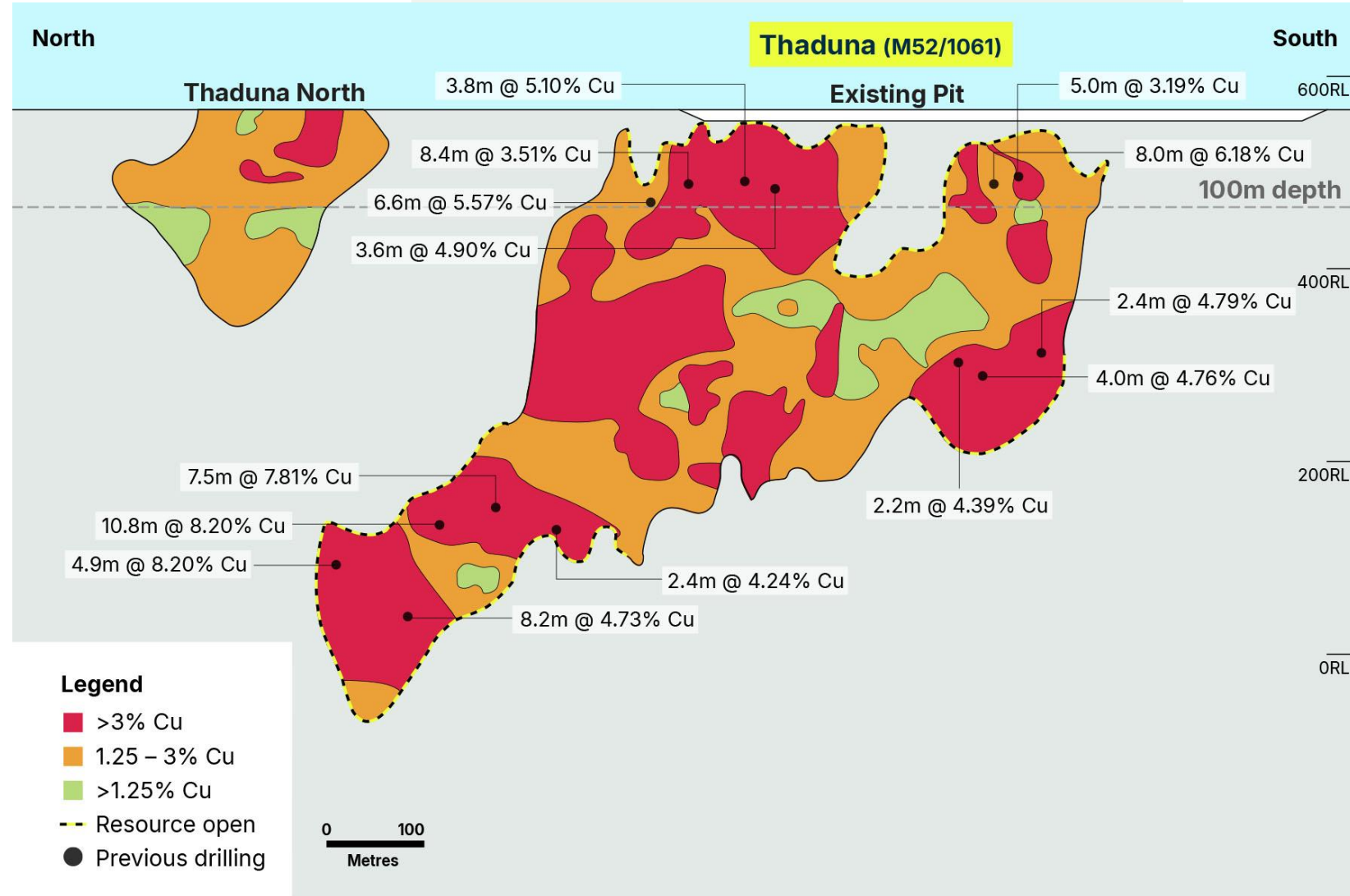
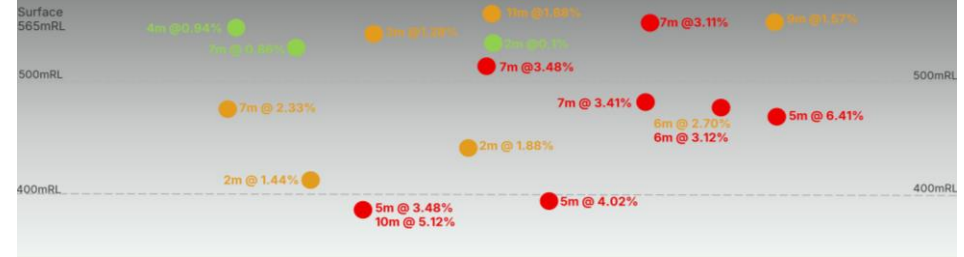
- Historic 1960s small-scale copper mine
- Analogue to the Thaduna copper deposit, sub-parallel and 2km to the southwest, hosted in the same stratigraphy and structural setting
- Mineralisation over **500m strike and 200m depth** defined by broad RC and RAB drilling^{F2} – **mineralisation open laterally and at depth**
- **Priority for resource definition drilling in 2026**



Ricci Lee Prospect vs Thaduna Deposit

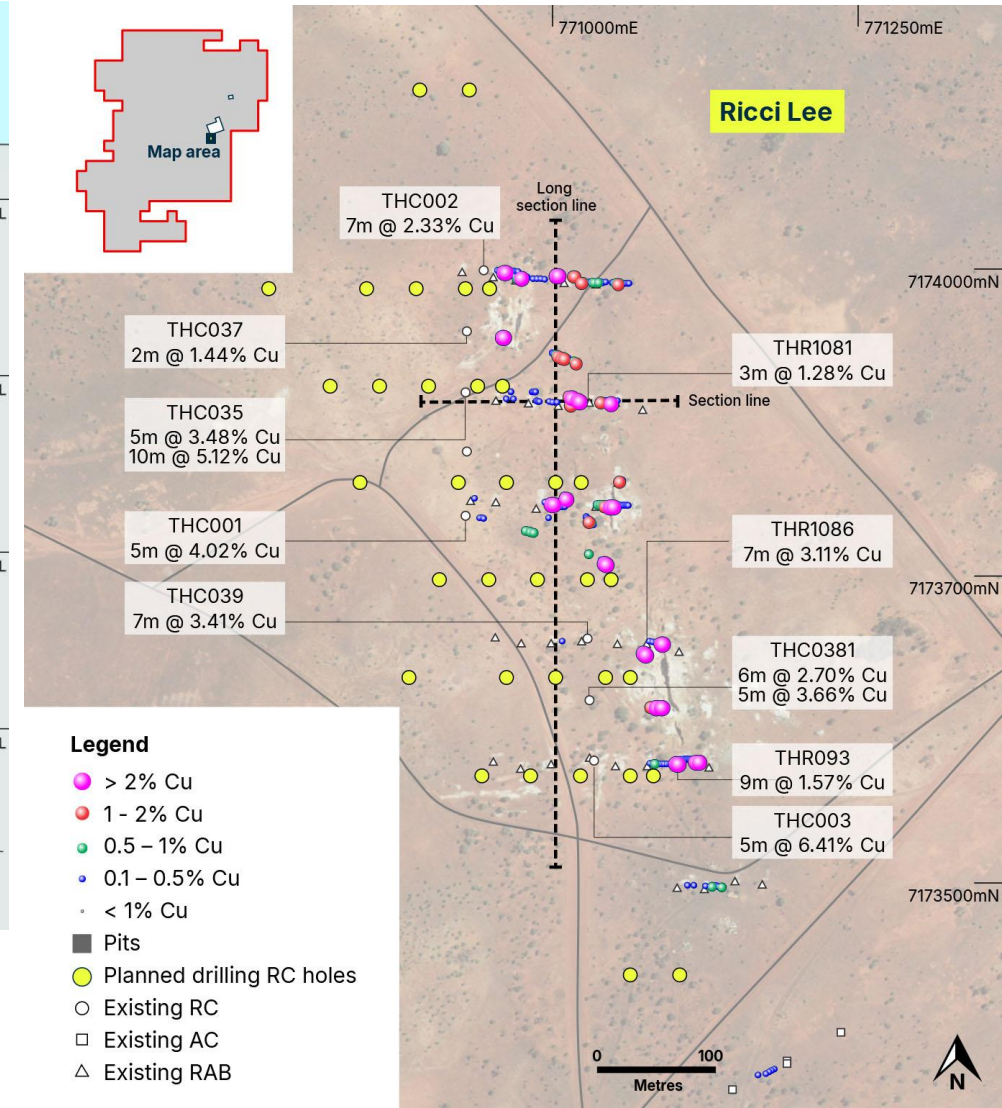
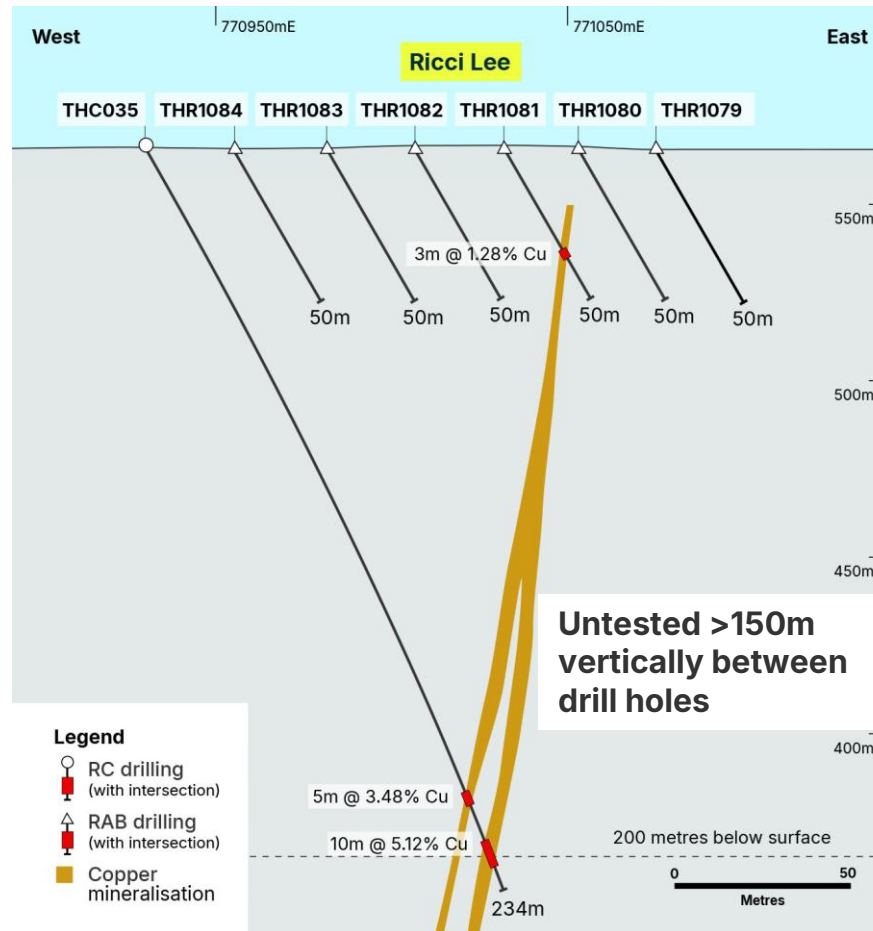
- Comparison of Ricci Lee drilling results and Thaduna Resource in long section and at **equal scale**
- Thaduna deposit is ~103 kt Cu, hosted in a carbon-filled brittle fault, with quartz-carbonate veining to >600 m vertical depth
- Moderate northerly plunge control
- Copper sulphides transition with depth from chalcopyrite to bornite (increased copper grade)
- **Mineralisation style, setting and scale used as a model at Ricci Lee**
- Ricci Lee mineralisation intersected 200m vertically, open at depth
- Initial focus of drilling for 2026

Ricci Lee long section showing copper intercepts



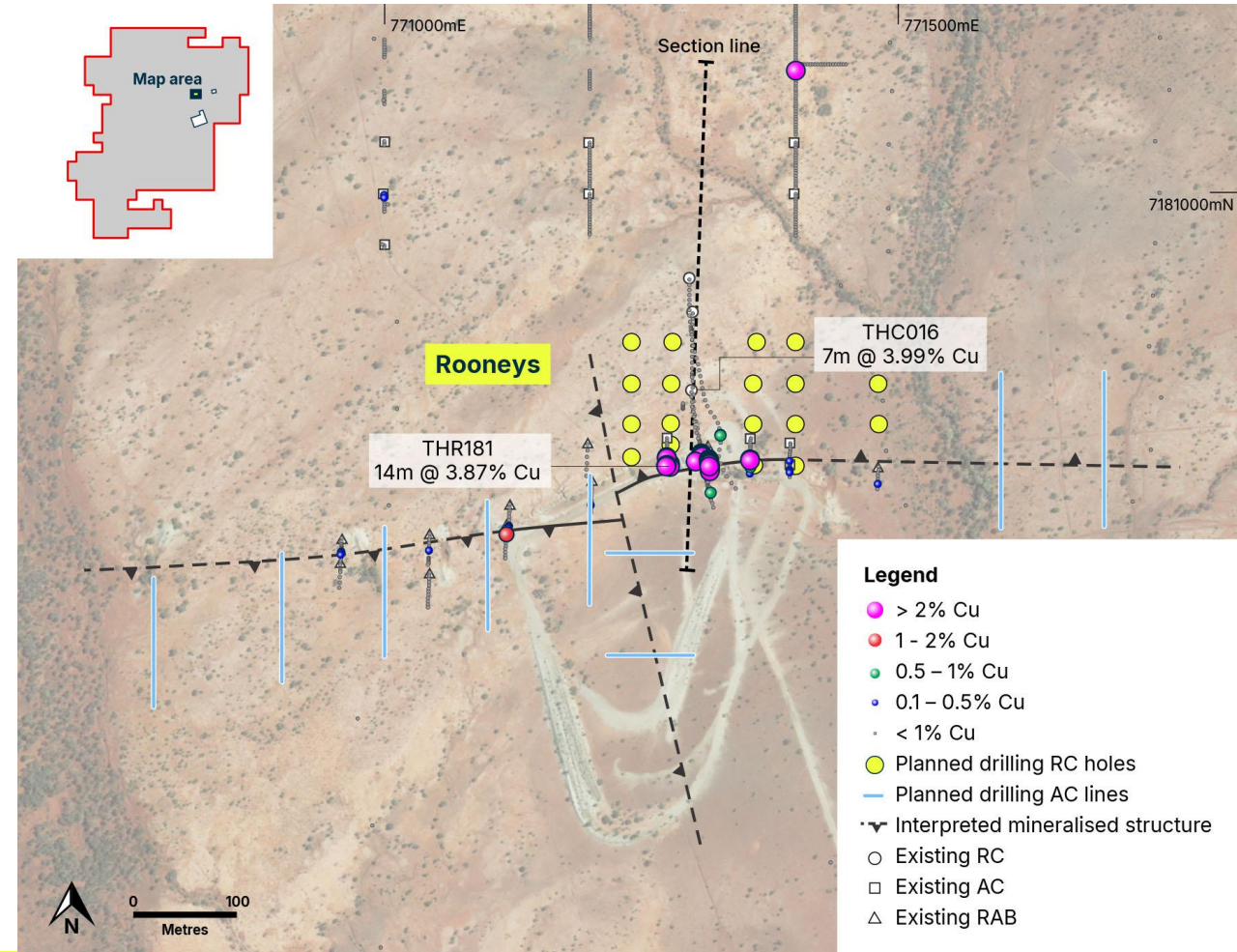
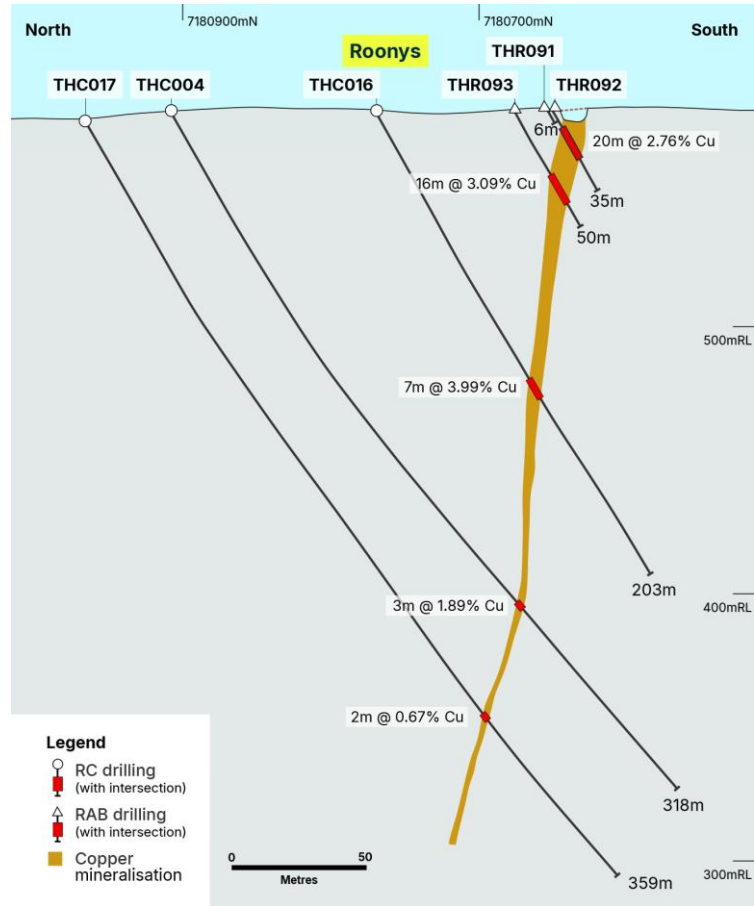
Ricci Lee Prospect - 2026 drill plan

- Mineralisation identified from RAB drilling testing of historic workings 2007
- Significant high-grade mineralisation defined by 8 RC holes 2010 – 2013^{F4}
- **No follow up drilling undertaken**
- Simple grid-based RC drill program, test up dip, down dip and strike potential
- Establish controls to mineralisation (eg plunge)
- **35 RC holes for 5,500m**
- Drilling planned late July 2026



Rooneys Prospect - 2026 drill plan

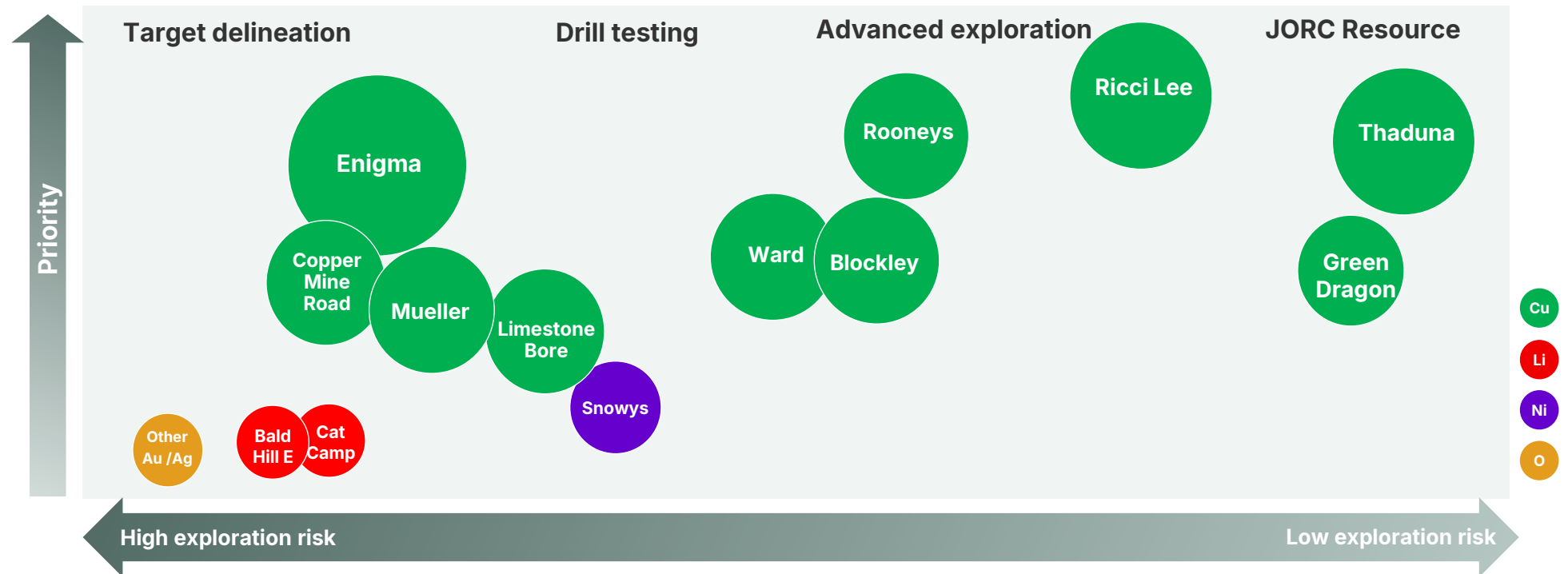
- 3.5km west of Green Dragon
- Previous drilling confirmed copper mineralisation, including:
 - **14m @ 3.87% Cu** (THR181)
 - **7m @ 3.99% Cu** (THC016) F4
- RC drill program testing 200m of potential strike mineralisation
- AC drilling to test strike, additional structures
- Second priority for H2 drilling program



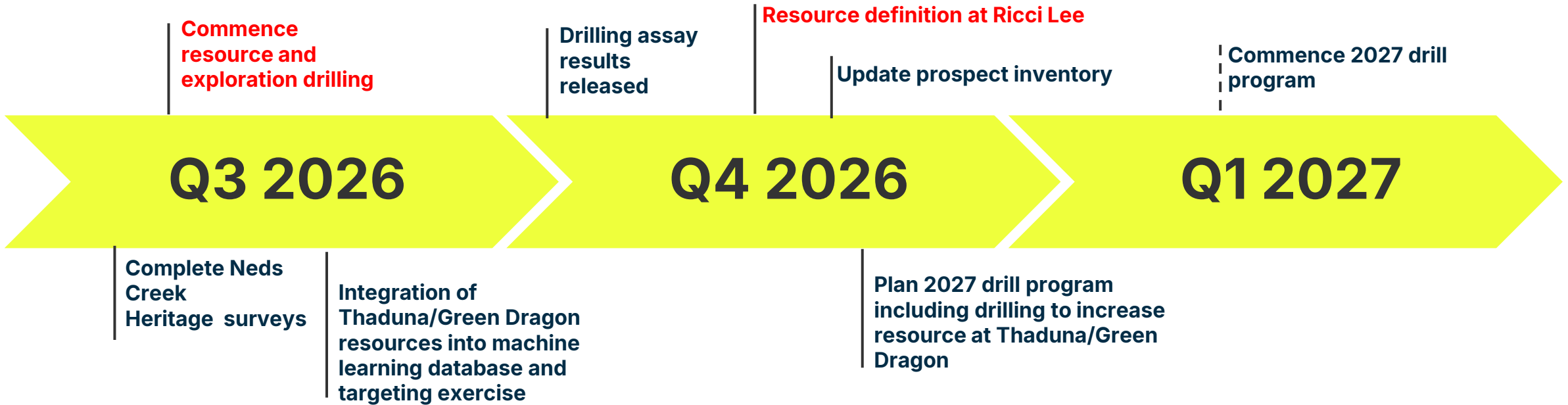
BOA: Building copper resources over 2026

- Copper focused exploration and mining tenements now covering ~1,378km²
- **Six high-priority targets identified**, including the **advanced Ricci Lee prospect - first drilling focus for rapid resource growth**
- Comprehensive data collation and machine learning target generation and ranking
- **Drilling programs planned for 2026** to define and grow **copper resources and test advanced targets**

Planning for success in 2026



Drilling to drive resource definition and newsflow



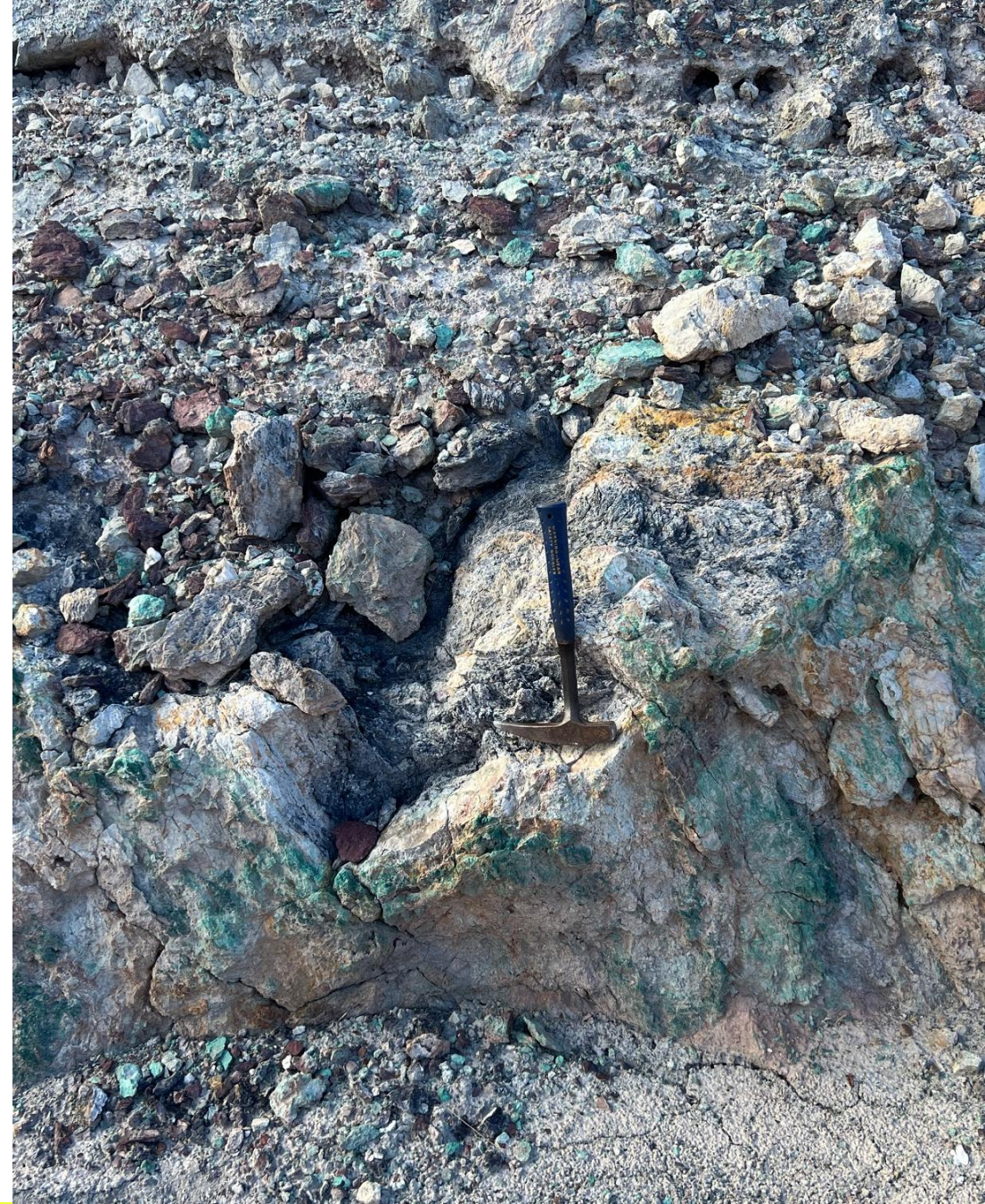
Proposed transaction timetable

Event	Indicative date
ASX announcement of transaction	25 June 2026
Notice of Meeting dispatched	July 2026
Shareholder meeting	August 2026
Satisfaction or waiver of remaining conditions	September 2026
Completion of transaction	September 2026

BOA Resources

- Transformational copper acquisition includes JORC resources and immediate and long-term value uplift potential
- Balance sheet to execute 2026 drilling and strategy
- Strong exploration team with prior discoveries and proven capital market execution
- Commitment to disciplined capital allocation and strong governance

**Drilling to grow BOA
copper resources
to economic scale in 2026**



Disclaimer

Forward Looking Statements

This presentation is not an offer for financial products in any jurisdiction or a financial product recommendation. The information in this presentation is an overview and does not contain all information necessary for investment decisions. In making investment decisions in connection with any acquisition of financial products, investors should rely on their own examination of BOA Resources Ltd ("BOA" or the "Company") and consult with their own legal, tax, business and/or financial advisers.

The information contained in this presentation has been prepared in good faith by the Company. However, no representation or warranty expressed or implied is made as to the accuracy, correctness, completeness or adequacy of any statements, estimates, opinions or other information contained in this presentation. To the maximum extent permitted by law, BOA, its directors, officers, employees and agents disclaim liability for any loss or damage which may be suffered by any person through the use or reliance on anything contained in or omitted in this presentation.

Certain information in this presentation refers to the intentions of BOA, but these are not intended to be forecasts, forward-looking statements or statements about future matters for the purposes of the Corporations Act or any other applicable law. The occurrence of events in the future is subject to risks, uncertainties and other factors that may cause the Company's actual results, performance or achievements to differ from those referred to in this announcement. Accordingly, BOA, its directors, officers, employees and agents, do not give any assurance or guarantee that the occurrence of the events referred to in this announcement will occur as contemplated.

Competent Person's Statement

The information in this document that relates to Thaduna and Green Dragon Exploration Results, being the data used to generate the mineral resource estimate, is based on data collected and compiled under the supervision of Mr David Reid, who was Exploration Manager for Ventnor Resources Limited (completed over 90% of the exploration used in the mineral resource estimate), and is now the Exploration Manager for BOA Resources Ltd. Mr Reid, BSc (Geology), is a registered member of the Australian Institute of Geoscientists and has sufficient experience that is relevant to the style of mineralisation and type of deposit under consideration and the activity being undertaken to qualify as a Competent Person under the 2012 edition of the Australasian Code for Reporting of Exploration Results, Mineral Resources and Ore Reserves (JORC Code). Mr Reid consents to the inclusion of the data in the form and context in which it appears.

The information in this document that relates to the Thaduna and Green Dragon Mineral Resources is based on, and fairly reflects, information compiled by Mr Matt Bampton, who is an employee of

Cube Consulting Pty Ltd and a Member of the Australian Institute of Geoscientists. Mr Bampton is not an employee of BOA Resources Limited. Mr Bampton has sufficient experience relevant to the style of mineralisation and type of deposit under consideration and to the activity which he is undertaking to qualify as Competent Person as defined in the 2012 Edition of the Australasian Code for the Reporting of Exploration Results, Mineral Resources, and Ore Reserves (JORC Code). Mr Bampton consents to the disclosure of information in this document in the form and context in which it appears.

JORC Compliance Statement

Footnotes:

- F1 As announced to the ASX by BOA, "BOA Acquires Copper Deposits in the Neds Creek Project WA", 25 June 2026
- F2 As announced to the ASX by BOA, "BOA entry into WA Murchison Copper Belt", 27 November 2025
- F3 As reported in BOA Quarterly report to the ASX "Mar26 Quarterly Activities Report", 30 April 2026
- F4 As reported to the ASX by BOA "Tenements granted at Neds Creek Copper Project ", 16 June 2026

The Company confirms that:

- It is not aware of any new information or data that materially affects the information included in the previous market announcements referred to in footnotes 1 - 4; and
- All material assumptions and technical parameters underpinning the estimates in those announcements continue to apply and have not materially changed.

Contact us



Cath Norman

Chair, Managing Director
cnorman@boaresources.com

Nathan Ryan

Investor Relations
nathan.ryan@nwrcommunications.com.au

info@boaresources.com
boaresources.com

© BOA Resources Limited
ACN 149 582 687

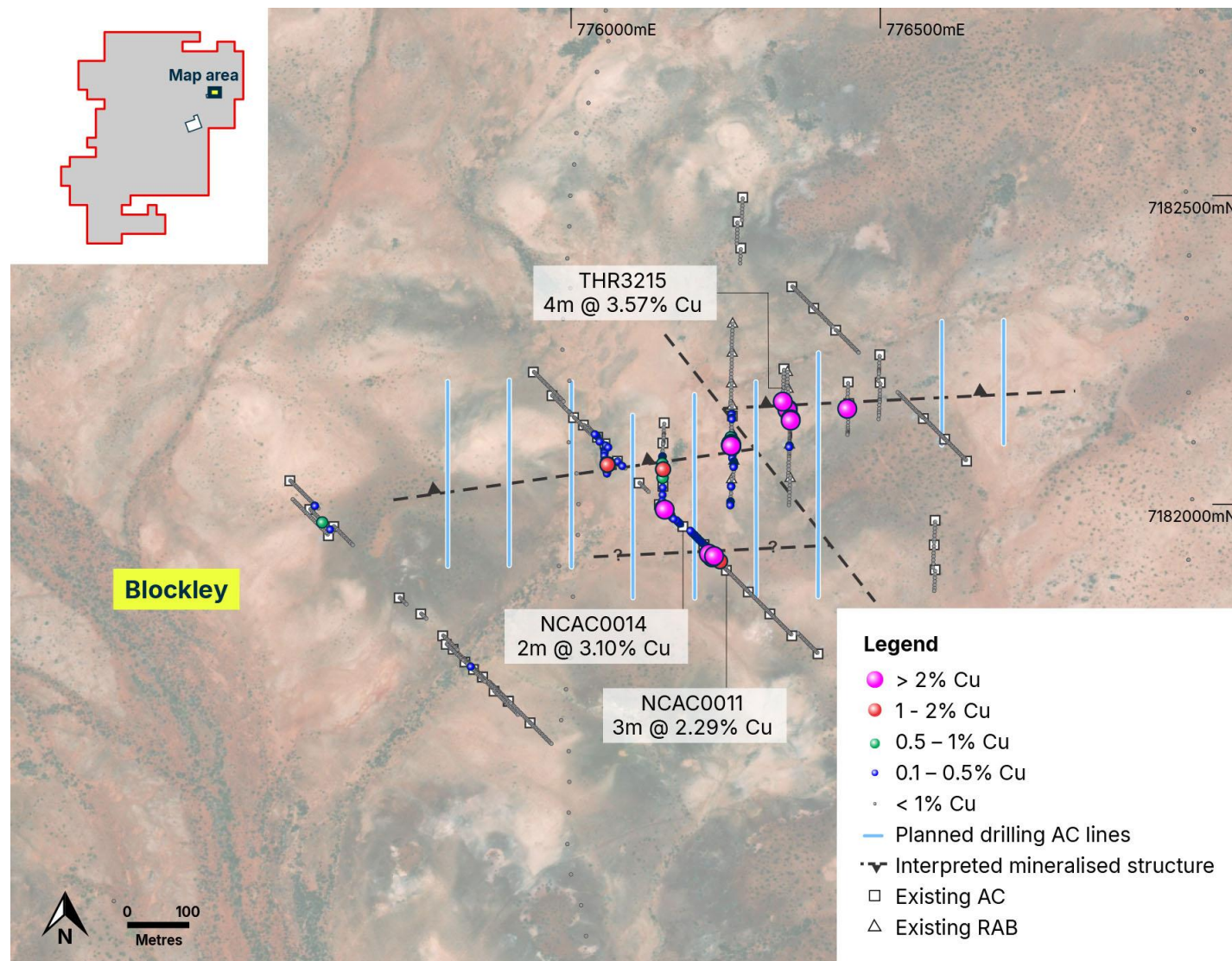
The background of the lower half of the page is a landscape photograph showing a wide, flat plain with scattered green trees and shrubs under a clear blue sky. In the distance, there are two prominent, rounded hills or mounds of earth. Overlaid on this image is the company logo. The letters 'BOA' are rendered in a large, bold, sans-serif font. The 'B' and 'O' are light blue, while the 'A' is bright yellow. To the right of 'BOA', the word 'Resources' is written in a smaller, bold, yellow sans-serif font.

Additional Slides



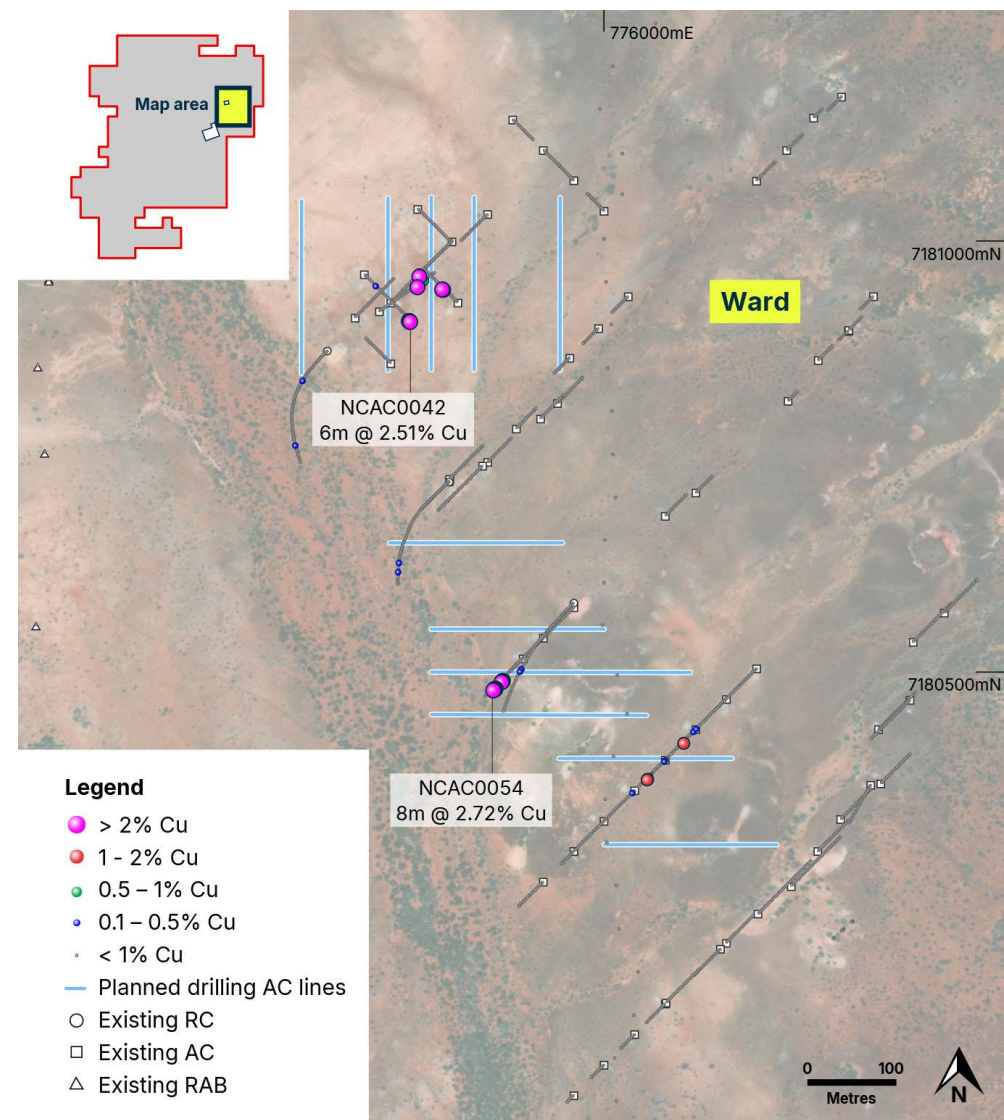
Blockley Prospect - 2026 drill plan

- 1.5km northeast of Green Dragon (previously referred to by earlier explorers as Northeast Green Dragon)
- Historic RAB and AC drilling has intersected an interpreted Green Dragon-oriented structure that may be offset by a second, Thaduna-oriented structure
- Southerly-oriented RAB drilling returned up to 4m @ 3.57% Cu from 56m, THR3215
- Northwest-oriented AC drilling also intersected copper mineralisation on an additional structure of uncertain orientation, including **2m @ 3.10% Cu** (NCAC0014) and **3m @ 2.29% Cu** (NCAC0011)^{F4}
- Mineralisation is hosted within the Thaduna Formation, but is proximal to the contact with the Johnson Cairn Formation
- AC drilling designed to confirm structural orientations and test continuity and grade of mineralisation
- Follow up RC drilling as warranted



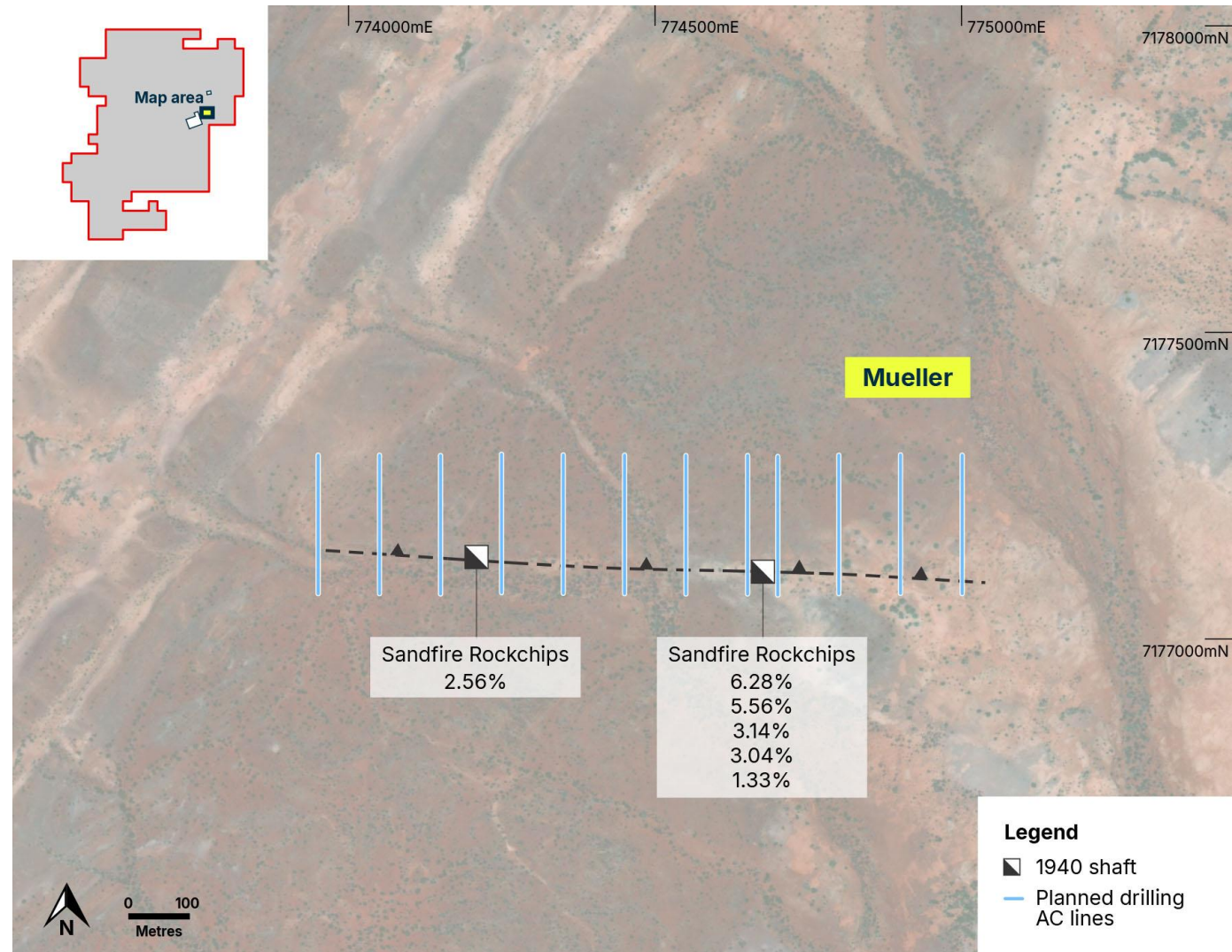
Ward Prospect - 2026 drill plan

- The Ward prospect lies less than 1km east of, and along strike from, Green Dragon and approximately 1km south of Blockley
- Earlier explorers referred to Ward as East Green Dragon
- Two targets have been identified at Ward
- The northern target is interpreted as an east-west extension of Green Dragon and has returned prior AC intersections of up to **6m @ 2.51% Cu** (NCAC0042)^{F6}
- The southern target comprises northwest-striking, Thaduna-oriented structures exposed in outcrop and 1960s costeans. Previous AC drilling returned up to **8m @ 2.72% Cu** (NCAC0054)^{F4}
- Planned AC drilling designed to test structural orientations and continuity of mineralisation



Mueller Prospect - 2026 drill plan

- The Mueller prospect lies approximately 2km northeast of Thaduna
- The mineralised Green Dragon-oriented structure was identified by BOA through mapping and sampling originally completed in the 1960s
- Subsequent sampling by CRA Exploration and Sandfire from the historic shafts and spoil returned encouraging grades^{F4}
- BOA mapping and interpretation of magnetic data indicates the Mueller structure is east-west trending, extends for several kms
- East-west structure is intersected by a northwest-striking, Thaduna-oriented structure, reflected in both surface drainage and magnetic data
- No previous drilling has been completed on the Mueller structure
- AC drilling designed to confirm structural orientations and test continuity of mineralisation



Limestone Bore Prospect - 2026 drill plan

- The Limestone Bore prospect lies approximately 8km to the west of Thaduna and is interpreted to be positioned within the Green Dragon structural corridor
- Previously named the 1470 Anomaly, Limestone Bore was identified from a 5m deep RAB hole drilled in 2006
- Previous drilling intersected an interpreted east-west trending Green Dragon-oriented structure, including intersections of up to:
 - **3m @ 3.01% Cu** (THR2954) and
 - **10m @ 1.28% Cu** (NCAC0391)^{F4}
- A series of AC drill lines is planned to test this orientation and assess the strike extent, dip and tenor of copper mineralisation

