



Leading the Lithium charge out of Namibia, Africa

Critical Battery Metals Exploration
Namibia and Australia

INVESTOR PRESENTATION // June 2023



DISCLAIMER

This presentation has been prepared and issued by Askari Metals Limited (the "Company") to inform interested parties about the Company and its progress. The material contained in this presentation sets out general background information on the Company and its activities. It does not constitute or contain an offer or invitation to subscribe for or purchase any securities in the Company nor does it constitute an inducement to make an offer or invitation with respect to those securities. No agreement to subscribe for or purchase securities in the Company will be entered into on the basis of this presentation.

The information supplied is in summary form and does not purport to be complete. The Company, its directors, officers, employees, agents, affiliates and advisers have not verified the accuracy or completeness of the information, statements and opinions contained in this presentation. Accordingly, to the maximum extent permitted by law, the Company makes no representation and gives no assurance, guarantee or warranty, express or implied, as to, and takes no responsibility and assumes no liability for, the authenticity, validity, accuracy, suitability or completeness of, or any errors in or omission from, any information, statement or opinion contained in this presentation.

You should neither act nor refrain from acting in reliance on this presentation material. This overview of the Company does not purport to contain all information that its recipients may require in order to make an informed assessment of the Company's prospects. You should conduct your own investigation and perform your own analysis in order to satisfy yourself as to the accuracy, and completeness of the information, statements and opinions contained in this presentation and when making any decision in relation to this presentation or the Company. The information in this presentation does not take into account the objectives, financial situations or needs of any particular individual. You should consider seeking independent professional advice based on your own objectives. To the extent permitted by law the Company, its directors, officers, employees, agents, affiliates and advisers exclude any and all liability (including, without limitation, in respect of direct, indirect or consequential loss or damage or loss or damage arising out of negligence) arising as a result of the use of anything contained in or omitted from this presentation.

All statements, other than statements of historical fact, included in the presentation, including without limitation, statements regarding forecast cash flows, future expansion plans and development objectives of the Company are forward-looking statements. Although the Company believes that the expectations reflected in such forward-looking statements are reasonable, they involve subjective judgement, assumptions and analysis and are subject to significant risks, uncertainties and other factors, many of which are outside the control of, and are unknown to the Company. Accordingly, there can be no assurance that such statements or expectations will prove to be accurate and actual results and future events may differ materially from those anticipated or described in this presentation. Historic information is not an indication or representation about the future activities of the Company.

The Company disclaims any obligation or undertaking to disseminate any updates or revisions to any information contained in this presentation reflect any change in expectations, events, conditions or circumstances on which that information is based.

This presentation is provided on a strictly private and confidential basis, to be used solely by the recipient. Neither this presentation nor any of its contents may be reproduced or used for any other purpose without the prior written consent of the Company. In accepting this presentation, the recipient agrees that it is provided solely for its use in connection with providing background information on the Company and that it is not used for any other purpose.

COMPETENT PERSONS' STATEMENT

The information in this report that relates to Exploration Targets, Exploration Results or Mineral Resources is based on information compiled by Johan Lambrechts, a Competent Person who is a Member of the Australian Institute of Geoscientists. Mr. Lambrechts is a full-time employee of Askari Metals Limited, who has sufficient experience that is relevant to the style of mineralisation and type of deposit under consideration and to the activity being undertaken to qualify as a Competent Person as defined in the 2012 edition of the Australasian Code for Reporting of Exploration Results, Mineral Resources and Ore Reserves. Mr. Lambrechts consents to the inclusion in the report of the matters based on his information in the form and context in which it appears.

MAJOR HIGHLIGHTS

▶ Flagship African lithium project

The Uis Lithium Project in Namibia is located in a highly mineralised and spodumene rich pegmatite belt:

- Namibia is mining friendly and heavily under-explored for lithium
- Grades up to 3.3% Li₂O from initial reconnaissance sampling
- Abundance of visible spodumene with >300 mapped pegmatites

🔧 RC drilling completed with diamond drilling scheduled

9,907m of maiden exploration drilling programs completed across 173 drill holes

Campaign identified a significant ~112m lithium-bearing mineralised pegmatite

Diamond drilling scheduled to test pegmatite depth extensions and produce fresh un-oxidised mineralisation

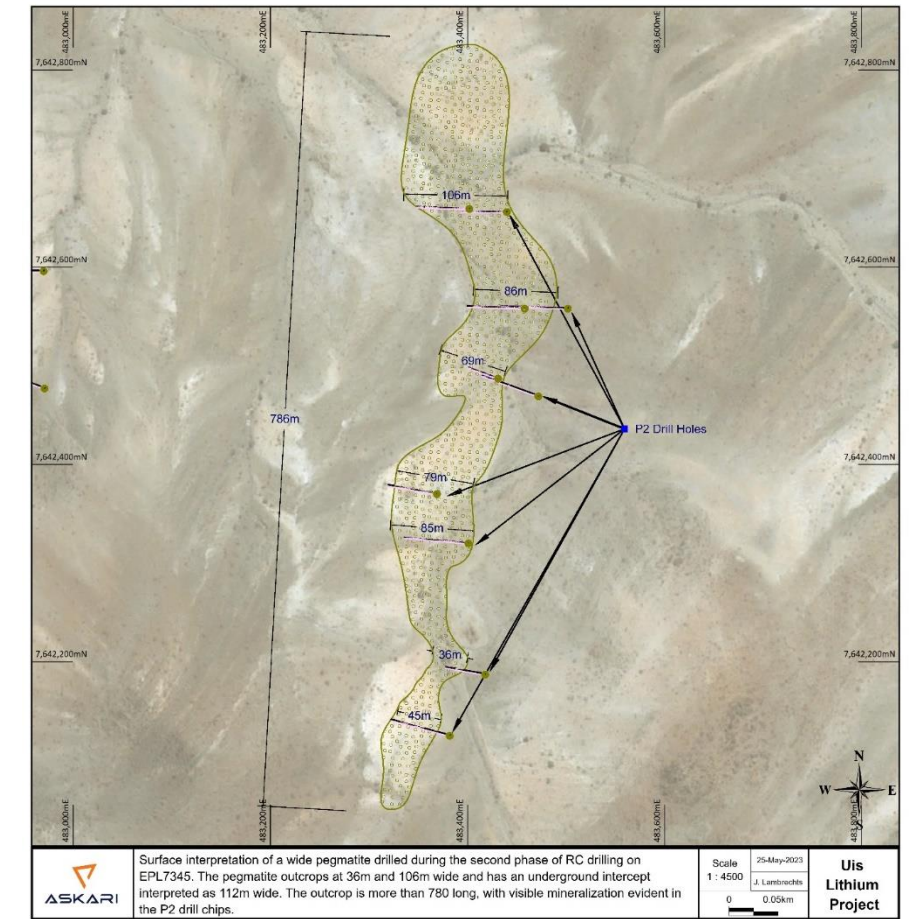
📈 Lithium team and global demand

Collectively our management and Board including the MD of Winsome Resources, has the pedigree to find and progress lithium assets on a global stage

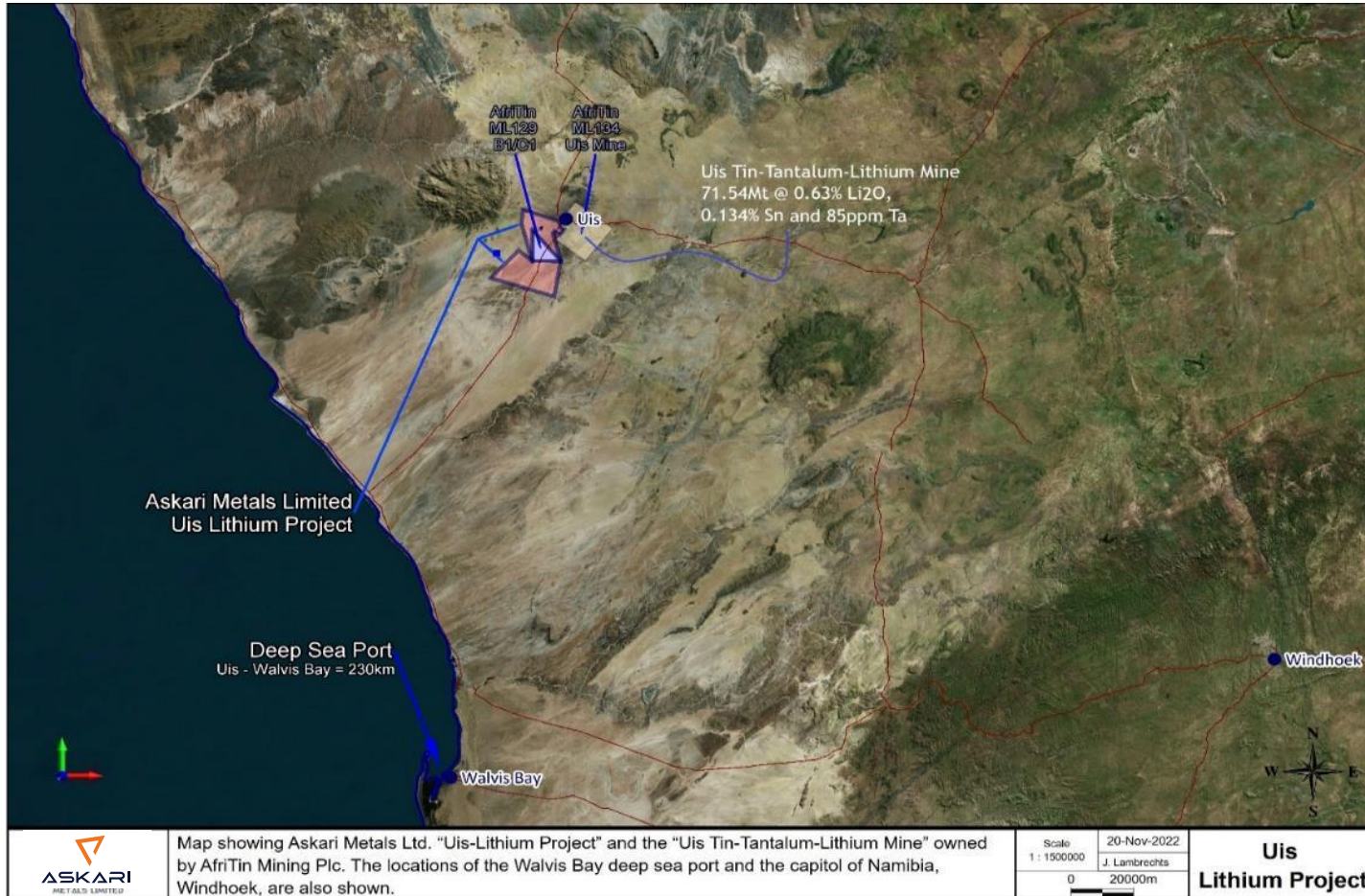
High quality spodumene concentrate, suitable for conversion in high Nickel battery applications, is the next frontier of lithium demand as a global deficit in supply looms

Source: ASX, Company platform (ASX. AS2)

'Uis Lithium-Tantalum' project



FLAGSHIP ASSET: 'UIS LITHIUM PROJECT'



Covers an area of 310km² less than 2.5km from Andrada Mining Ltd's (LSE: ATM) operating Uis Mine, which has a JORC (2012) Mineral Resource of 81Mt @ 0.73% Li₂O

High-grade pegmatite samples collected from surface – an abundance of **spodumene** and some **lepidolite** are visible in pegmatites within old workings

Assay results:

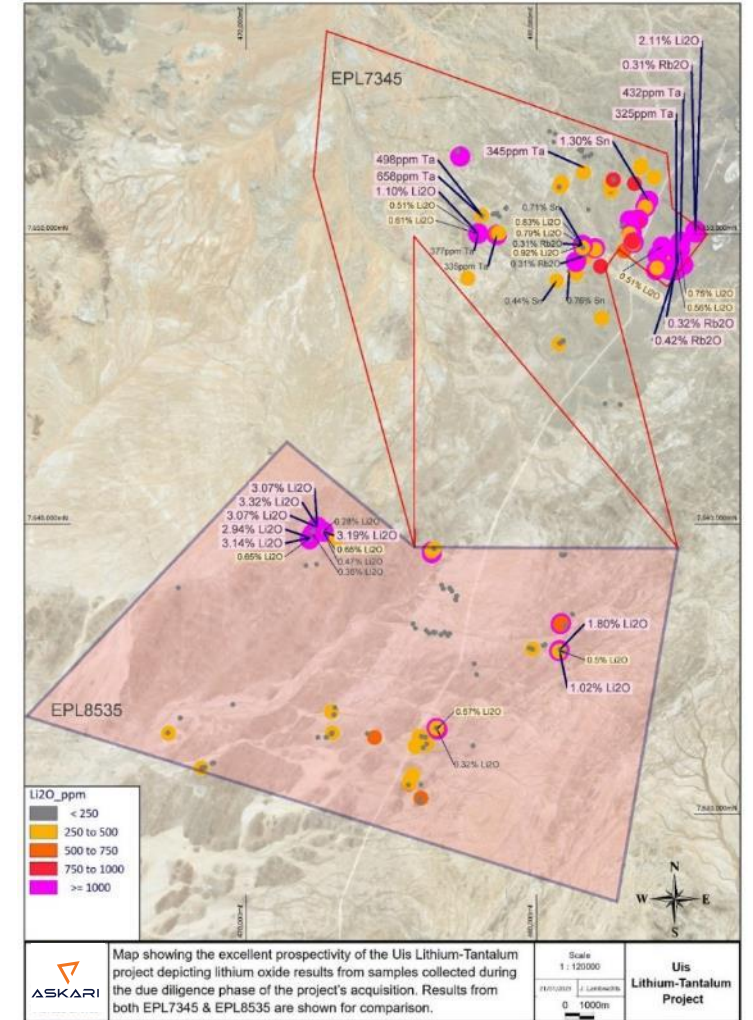
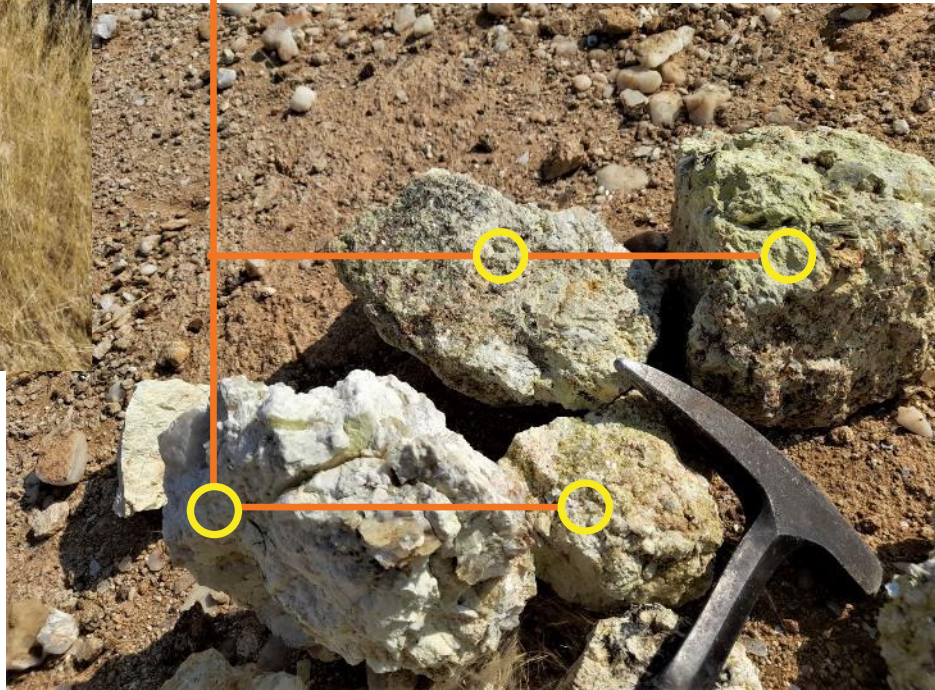
- **3.3% Li₂O** as well as 3.2% Li₂O, 2.1% Li₂O, 1.8% Li₂O, 1.1% Li₂O, 0.92% Li₂O, 0.83% Li₂O and 0.79% Li₂O
- **3.2% Sn** as well as 1.3% Sn, 0.76% Sn and 0.71% Sn
- **4280 ppm Ta** as well as 658 ppm Ta, 498 ppm Ta, 432 ppm Ta, 377 ppm Ta and 345 ppm Ta
- **7,980 ppm Rb** as well as 4,214 ppm Rb, 3,387 ppm Rb, 3,110 ppm Rb and 2,990 ppm Rb

HIGH-GRADE LITHIUM MINERALISATION

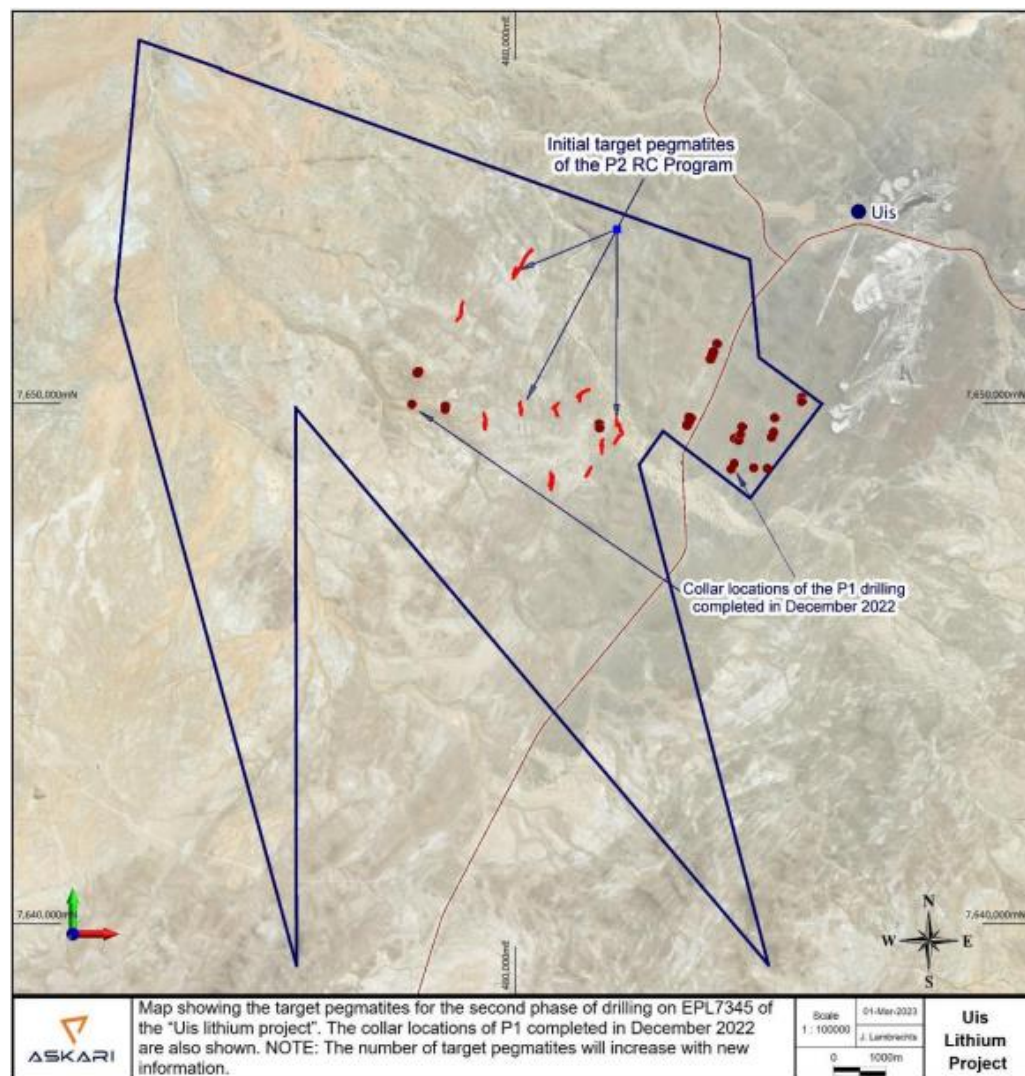


Pegmatite outcrop on the Uis Lithium Project on EPL 8535

Spodumene mineralisation observed in large rocks identified at the mine workings on EPL 7345



PHASE II RC DRILLING COMPLETED (EPL 7345)



- Second phase RC drilling campaign in EPL 7345 for a total of 3,367m across 55 drill holes
- Program focused on previously untested mapped and identified pegmatites reported to have visible lithium mineralisation at surface
- Project-wide detailed mapping identified additional pegmatites drilled and tested during the current drilling phase
- Follows on from inaugural 3,017m drilling program completed in December 2022

SIGNIFICANT PEGMATITE INTERSECTION ON EPL 7345

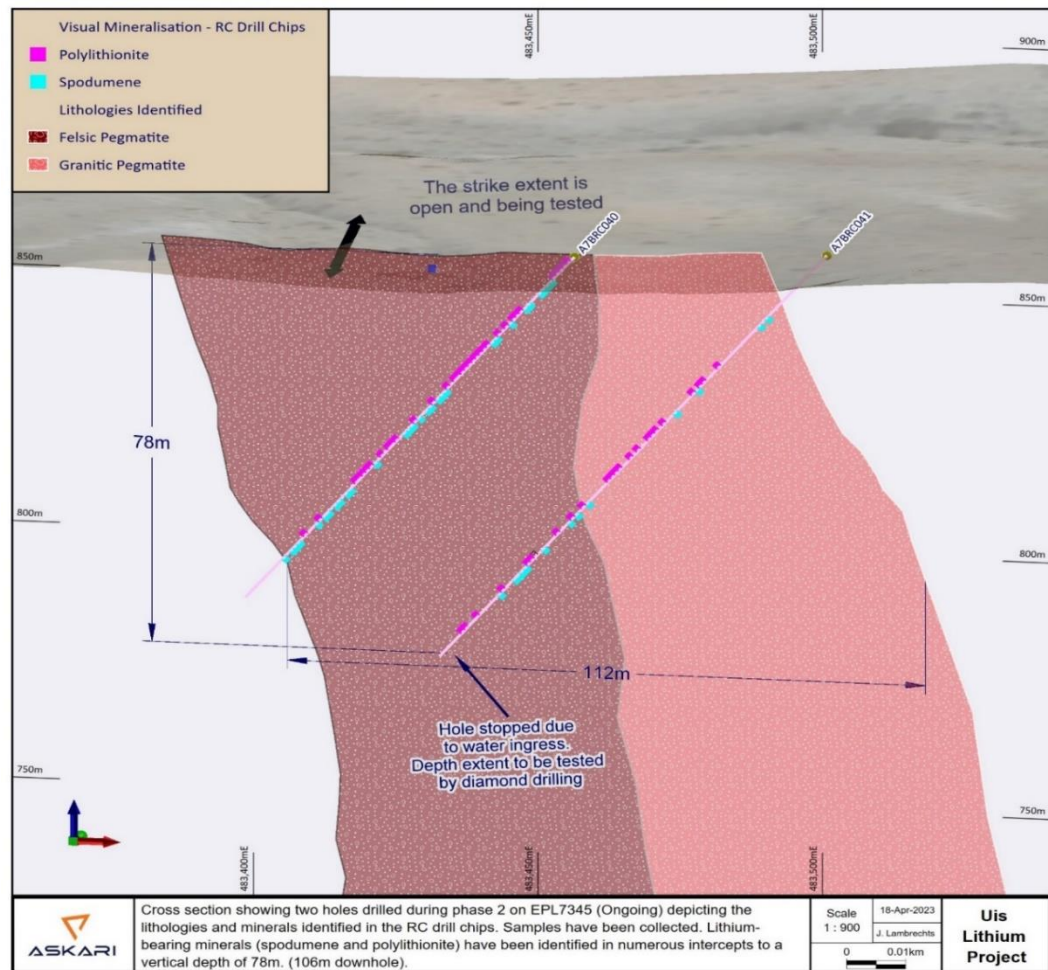
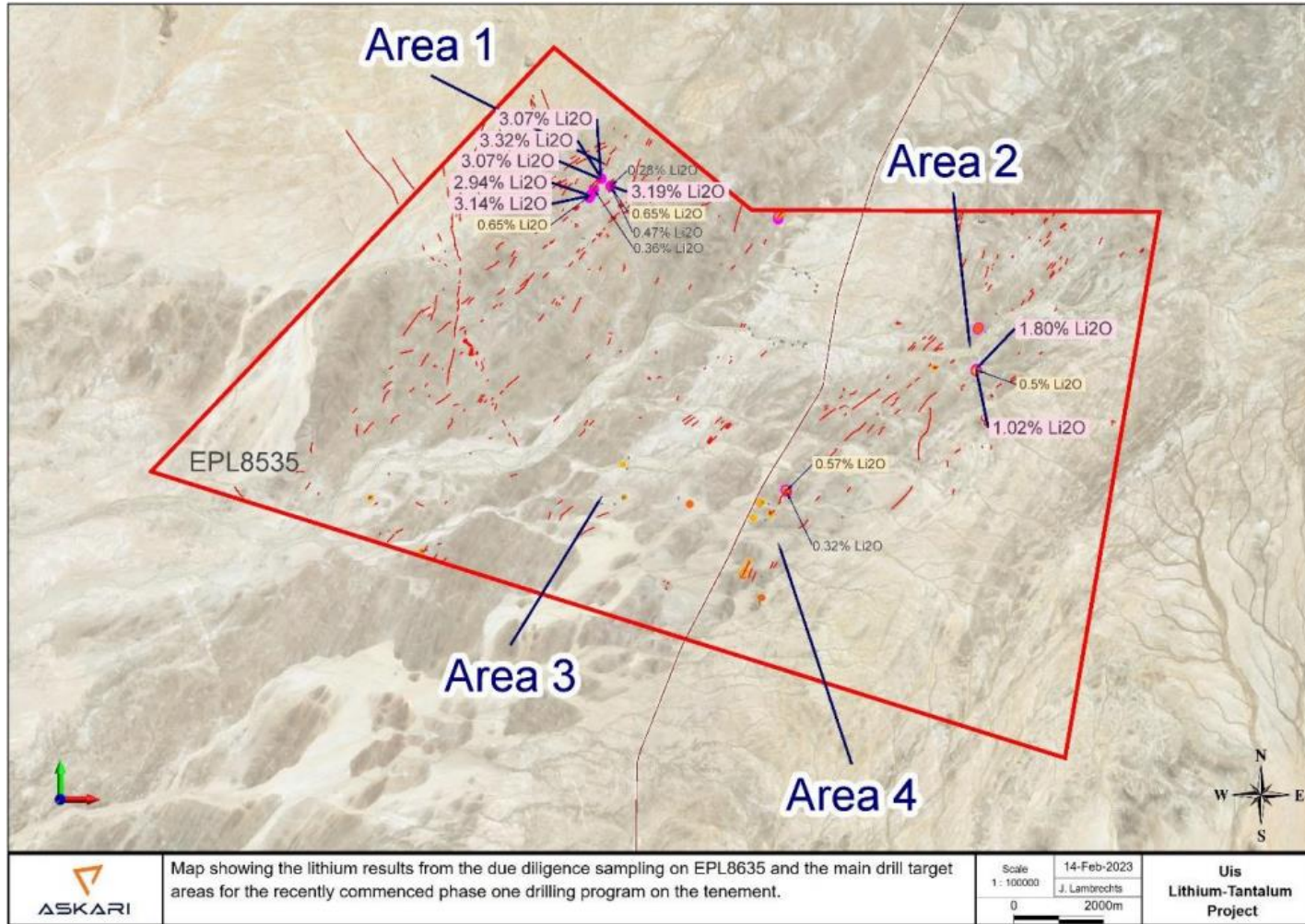


Figure 3: cross section of a wide lithium-bearing pegmatite intersected during the second phase of drilling on EPL 7345

- Drilling has reached an area where several encouraging spodumene-bearing pegmatites were identified in the recent mapping and sampling program
- This resulted in a wide drill intercept of a lithium-bearing pegmatite on EPL 7345, with a width of 112 metres with several polyolithionite and spodumene occurrences also identified from the drill chips
- Water prevented the holes from drilling all the way through the pegmatite, but this intersection is considered very significant
- Diamond drilling to commence in early July 2023 for a minimum of ~1,500m to test depth and strike extensions as well as drill test deeper mineralisation beneath the water aquifer targeting fresh un-oxidized mineralisation

PHASE I RC DRILLING COMPLETED (EPL 8535)



- Phase I RC drill program completed on EPL 8535 for a total 3,523m across 59 drill holes
- Four separate target zones were drill tested focused on previously mined pegmatites as well as larger untested pegmatites
- First phase drilling campaign tested high-grade lithium targets identified through due diligence work in Area 1
- Drill campaign also tested larger pegmatite bodies identified in Areas 2,3 and 4
- Mapping on EPL 8535 will inform the second phase of drilling currently underway

ACHIEVEMENTS AND OUTLOOK



OCT - NOV
2022

Initial phase of RC drilling completed at EPL 7345
Total 59 drill holes and approx. 3,000m



JAN - FEB
2023

Phase I RC drilling underway at EPL 8535
Phase II RC drilling underway at EPL 7345



FEB - MAR
2023

Further acquisitions being evaluated to expand the landholding of the Uis Lithium Project



MAR - APR
2023

Assay results from Phase I RC drilling at EPL 7345
Phase II RC drilling on EPL 7345 completed for a total of 3,367m across 55 drill holes
Phase I RC drilling on EPL 8535 completed for a total of 3,523m across 55 drill holes



MAY - JUNE
2023

Assay results from Phase I RC drilling at EPL 8535
Assay results from Phase II RC drilling at EPL 7345
Project-wide detailed mapping completed at EPL 8535



JULY - AUG
2023

Diamond drilling to commence on EPL 7345 at significant ~112m wide pegmatite
Visual core and mineralisation identified through diamond drilling
Phase II RC drilling at EPL 8535



SEPT - OCT
2023

Assay results from Phase II RC drilling at EPL 8535
Assay results from Diamond Drilling at EPL 7345



NOV - DEC
2023

Phase III RC drilling at EPL 8535
Additional diamond drilling on EPL 7345 designed to delineate a maiden JORC (2012) Mineral Resource at the Uis Lithium Project



DEVELOPMENT & PRODUCTION

RESOURCE GROWTH

TARGETED EXPLORATION

- Initial RC drilling programs completed at Uis Lithium Project – a total of 173 drill holes and 9,907m
- Significant lithium-bearing mineralised pegmatite ~112m wide intersected at EPL 7345
- Diamond drilling to commence ASAP testing depth and strike extensions and targeting fresh un-oxidized mineralisation beneath water aquifer

- Maiden JORC Resource targeted at the Uis Lithium Project ~12 months
- Grid-based and detailed diamond drilling to focus on resource delineation and expansion
- Acquisition of complimentary and strategic project areas located within the highly prospective Uis pegmatite belt
- Metallurgical testing and bulk samples to be undertaken using core from diamond drilling

- Strategic development and down-stream processing capabilities of Huayou Cobalt to drive the Uis Lithium Project forward
- Focus is on the development of a large tonnage and low-cost open pit mining operation
- Progressive development and exploration of other complimentary and strategic project areas

EXPERIENCED TEAM



Mr Robert Downey
CHAIRMAN

Mr Downey was admitted as a barrister and solicitor of the Supreme Court of Western Australia in December 1999.

In 2001 Mr Downey joined Blakiston & Crabb, an independent resource / corporate / commercial law firm based in Perth.

While at Blakiston & Crabb, Mr Downey specialised in advising oil and gas and mining companies in relation to a wide range of legal issues.



Mr Gino D'Anna
EXECUTIVE DIRECTOR

Mr D'Anna has significant primary and secondary capital markets experience and extensive experience in resource exploration, public company operations, administration and financial management.

Over the past 12 years, Mr D'Anna has raised in excess of \$200 million for public and private companies.

Mr D'Anna has experience in Canadian Government and First Nations relations in the mining sector and has worked in numerous jurisdictions including Australia, Botswana, Namibia and Canada.



Mr Chris Evans
TECHNICAL DIRECTOR
- LITHIUM

Mr Evans has a strong lithium and civil engineering background with close to 20 years demonstrated success in managing large scale construction and mining development projects and operations across various commodities.

As Chief Operating Officer, Mr Evans was responsible for building and bringing into operation the Pilgangoora lithium mine and processing facility which was recently acquired by Pilbara Minerals (ASX:PLS) in a deal valued at more than \$200 million.



Mr Johan Lambrechts
VICE PRESIDENT
- EXPLORATION & GEOLOGY

Mr Lambrechts has demonstrable public company experience in large and small companies and possesses significant expertise in both opencut and underground operations, managing teams ranging from 3 to 475 people in a range of appointments.

He has successfully managed multiple contracts and projects ranging from diamond and RC drilling to infrastructure construction and ore reclamation.

EXPERIENCED TEAM



Mr Paul Fromson
CFO / COMPANY SECRETARY

Mr Fromson, B.Com, CPA, AICD, is a finance professional who has more than 30 years industry experience, including over 23 years with ASX listed resource companies.

He has held a variety of senior positions including Company Secretary, Chief Financial Officer and Director in exploration and mining companies.



Mr Cliff Fitzhenry
**CHIEF EXPLORATION
& PROJECT MANAGER**

Mr. Fitzhenry is a seasoned Geologist with 19 years' experience, beginning his career with Anglo Platinum on the Bushveld Complex and has subsequently worked on mining and exploration projects throughout Africa.

Mr. Fitzhenry holds MSc and BSc Honours (cum laude) degrees from the University of KwaZulu Natal (South Africa) and is a Registered Professional Natural Scientist in South Africa.



Mr Corne Coetser
SENIOR GEOLOGIST

Mr. Coetser received his BSc Earth science degree from the University of Stellenbosch Western Cape, South Africa.

He has worked in multiple commodities for TSX and ASX listed companies with experience in geological and surveying platforms providing innovative methods for mining and exploration industry enhancing company growth.

CORPORATE SNAPSHOT

SHARES ON ISSUE AND MARKET CAPITALISATION

Shares on issue (ASX: AS2) (incl. escrowed holdings)	74,323,352
Share Price (as at 9 June 2023)	A\$0.265
Market Cap (undiluted)	A\$19.7 million

OTHER SECURITIES

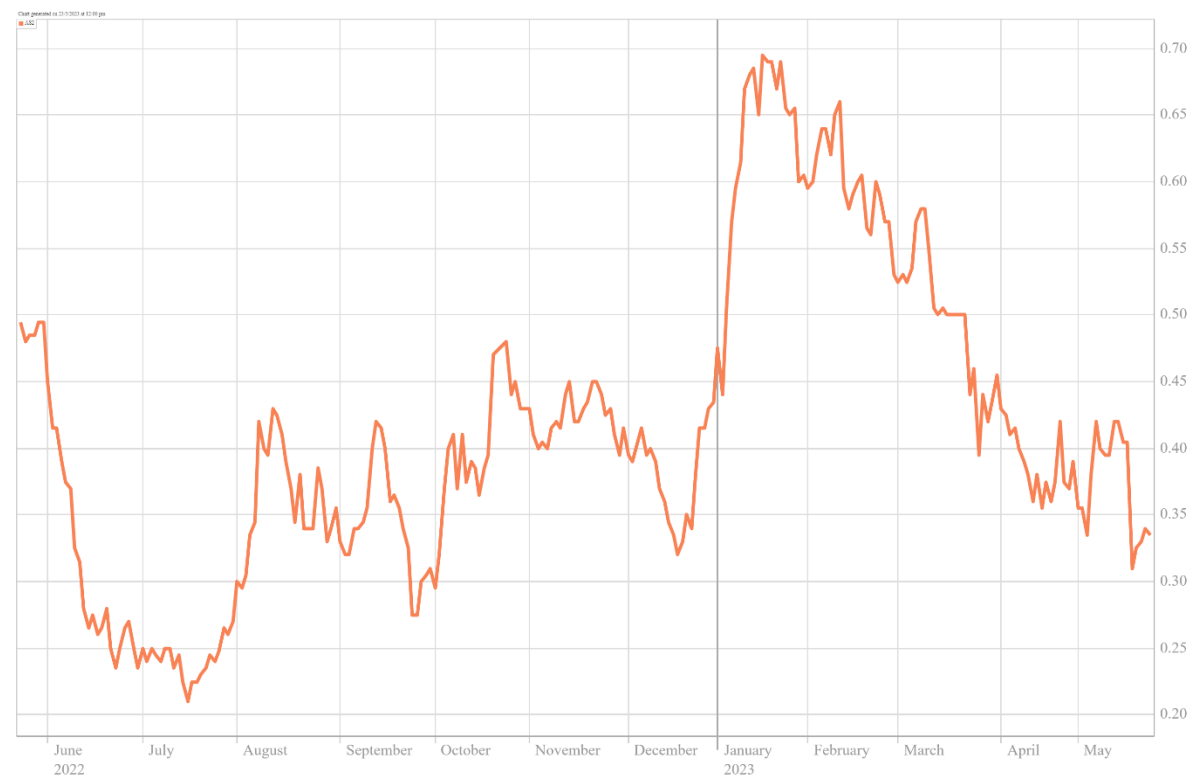
Listed Options (ASX: AS2O)	16,776,495
Unlisted Options (various ex. prices)	5,281,250
Performance Rights	12,280,000

OTHER CAPITALISATION METRICS

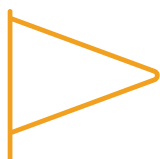
Cash (as at 31 May 2023)	A\$5.0 million
Enterprise Value	A\$14.7 million
Debt	Nil

Source: ASX, Company platform (ASX. AS2)

ASX: AS2 SHARE CHART – JUNE 2022 TO PRESENT



INVESTMENT OPPORTUNITY



NAMIBIAN FLAGSHIP PROJECT

The Uis Lithium Project in Namibia is located in a **highly mineralised, spodumene rich pegmatite belt** with a history of prior production and exploration success

- Grades up to 3.3% Li₂O from initial reconnaissance sampling
- Mining friendly environment
- >300 mapped pegmatites
- Abundance of visible spodumene
- High-grade lithium, tin, tantalum and rubidium deposits

Namibia is **heavily under-explored** for lithium

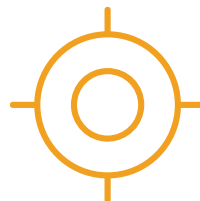


RC DRILLING COMPLETED WITH DIAMOND DRILLING TO COMMENCE

Maiden **exploration drilling programs have been completed** at the Uis Lithium Project, involving a total of **9,907m** RC drilling across **173** drill holes

Initial exploration campaign has identified a **significant ~112m lithium-bearing mineralised pegmatite**

Diamond drilling **to test depth extensions** of this pegmatite and produce fresh **un-oxidised** mineralisation



EASTERN PILBARA LITHIUM PORTFOLIO

District scale opportunity **strategically located next to recent discoveries** and world-class deposits leveraged to regional success

- >2,100 km² in the eastern Pilbara close to existing deposits and new discoveries
- Major infrastructure to support future exploration and development
- Multiple exploration targets identified with field programs ongoing



GLOBAL SUPPLY SHORTFALL

A number of analysts are predicting potential **lithium supply shortfall** due to:

- Limited number of active lithium mines globally
- Delay between new lithium discoveries and production
- Growing demand from EV market and other energy storage solutions as world moves towards 2050 Net Zero goals



NICKEL BATTERY APPLICATIONS

High quality spodumene concentrate, suitable for conversion in high Nickel battery applications, is the **next frontier of lithium demand** as a global deficit in supply looms

Appendices

ADDITIONAL PORTFOLIO - COPPER AND GOLD ASSETS

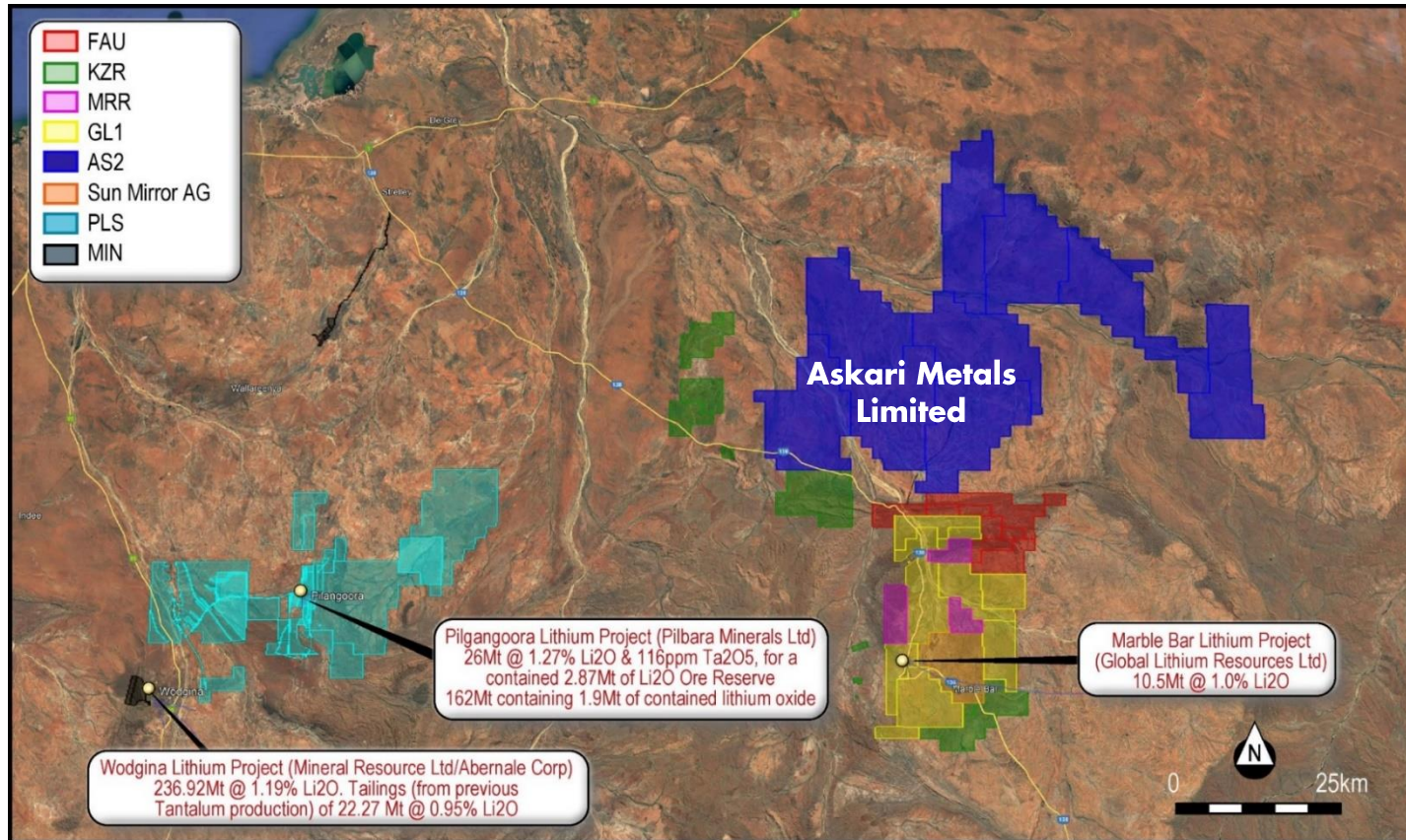
AUSTRALIA



- **Burracoppin Gold Project** hosts significant shallow high-grade gold mineralisation including 3m @ 17.4 g/t Au from 73m downhole
 - A total of 1,540 drill holes completed including 220 RC holes and 1,315 RAB holes - JORC (2012) resource estimation modelling underway
- **Horry Copper Project** boasts high-grade copper mineralisation including 8.5% Cu with 0.71 g/t Au and 42 g/t Ag; 3.7% Cu with 0.63 g/t Au and 12 g/t Ag; 1.0% Cu with 5 g/t Ag
 - Phase I RC drilling completed for 2,096m across 29 drill holes
- High-grade copper mineralisation at **Callawa Copper Project** with the strike remaining open in all directions, including: 6.78% Cu, 4.35% Cu, 2.02% Cu and 1.85% Cu
- Historic drilling at **Mt Maguire Gold Project** has identified an anomalous gold zone but remains largely untested demonstrating significant exploration potential – historic drilling includes 2m @ 12.14g/t Au from 35m; 1m @ 3.84g/t Au from 33m; and 5m @ 2.67g/t Au from 36m
- **Springdale Project** hosts significant gold potential as well as REE, Copper, Zinc, Lead, Cobalt and Manganese – significantly under-explored

EASTERN PILBARA LITHIUM PORTFOLIO

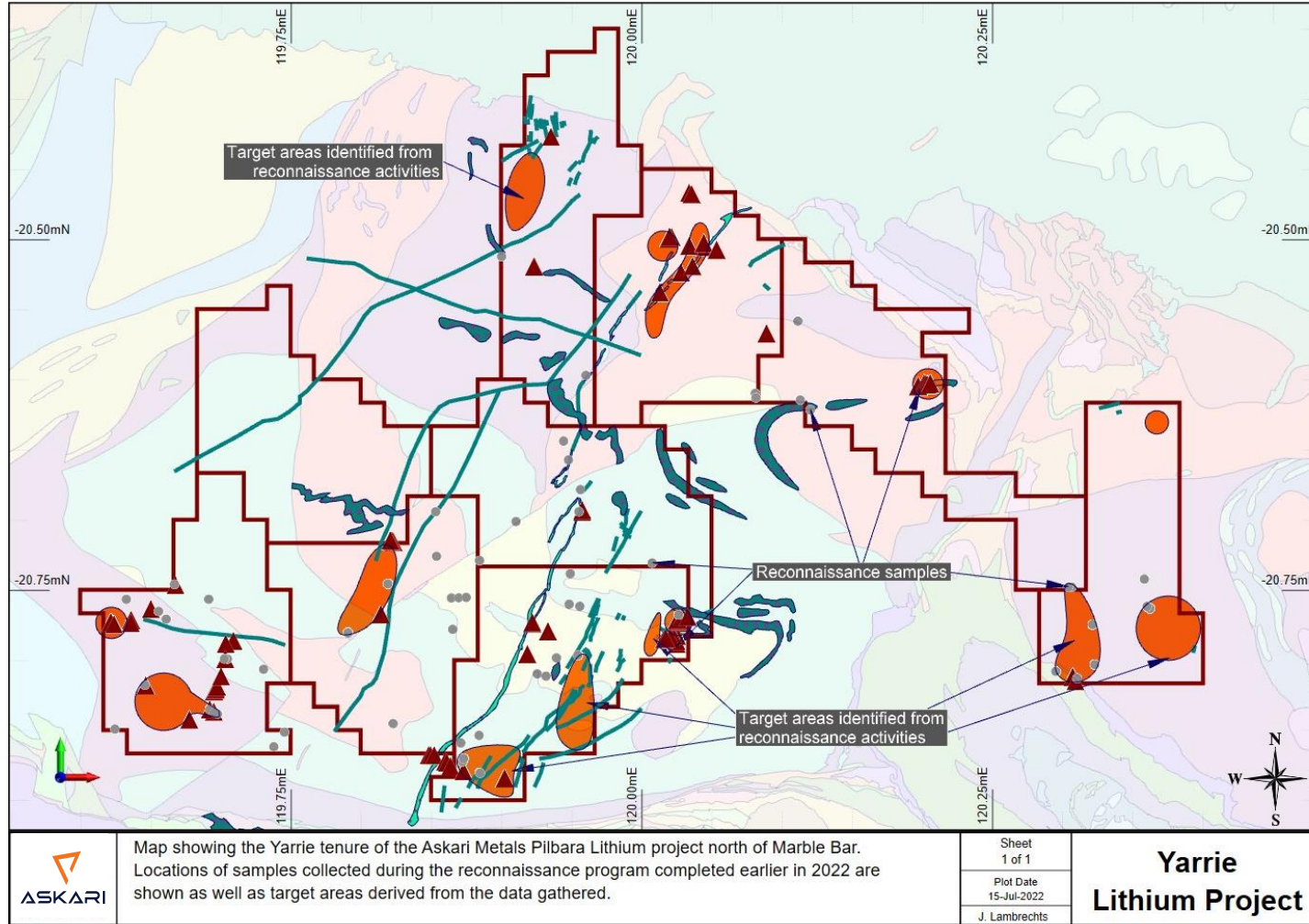
WESTERN AUSTRALIA



- Expansive Eastern Pilbara lithium portfolio strategically located next to recent discoveries and world-class deposits
- >2,100 km² in the eastern Pilbara close to existing deposits and new discoveries
- Major infrastructure to support future exploration and development
- Multiple exploration targets identified with field programs ongoing
- Soil and rock sampling program completed – 11 high-priority targets generated
- Soil auger and shallow Aircore drilling is planned

YARRIE LITHIUM PROJECT

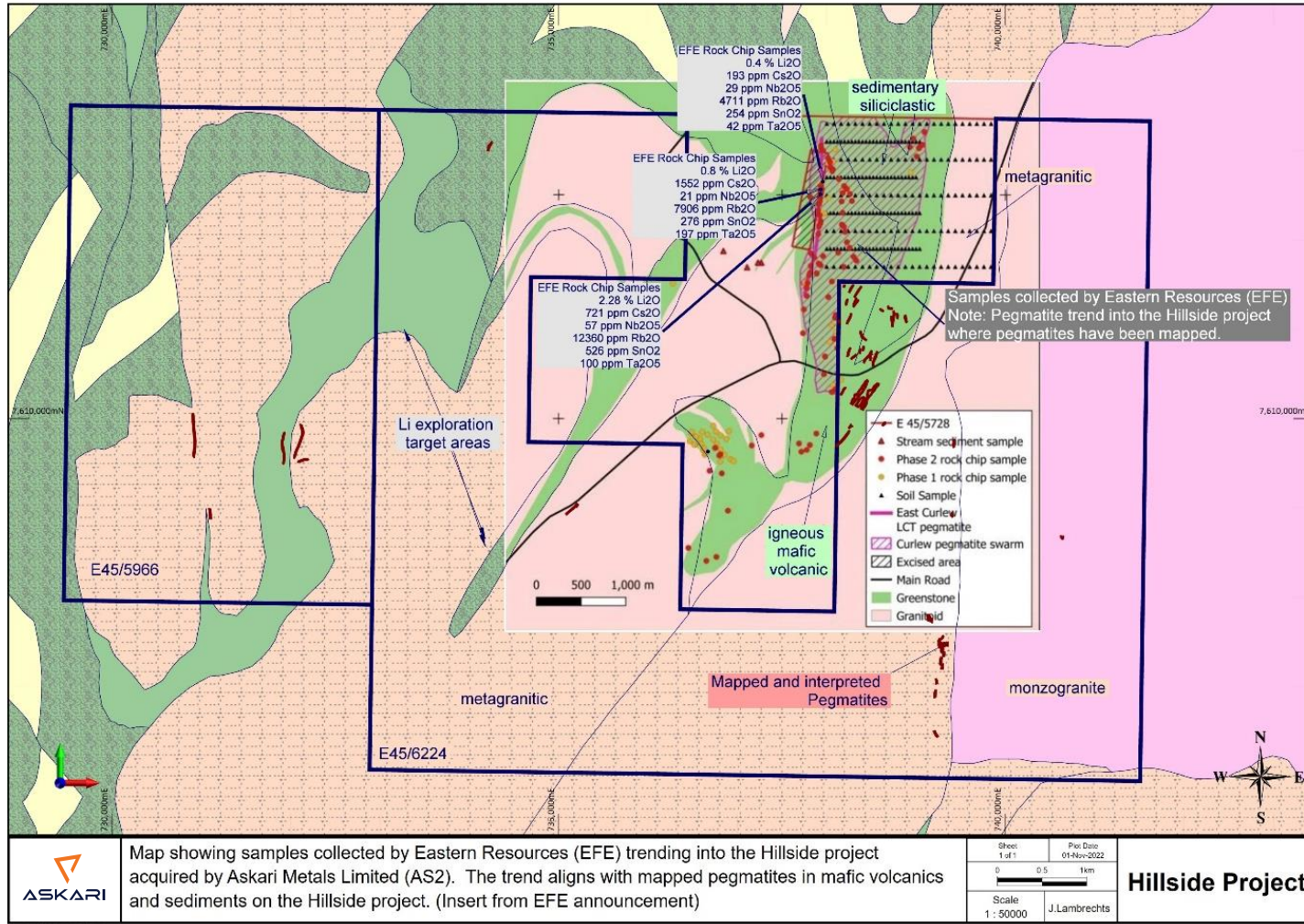
WESTERN AUSTRALIA



- Phase I project-wide lithium exploration program resulted in more than eleven (11) target areas being generated
- Target areas are based on identified lithium and LCT-type pegmatite pathfinder minerals from the collection of stream sediment samples, soil samples and rock samples
- Target areas correlate with hyperspectral survey results
- 129 Rock Samples and 238 Stream Sediment Samples were collected from all nine tenements
- Multiple mapped pegmatites

HILLSIDE LITHIUM PROJECT

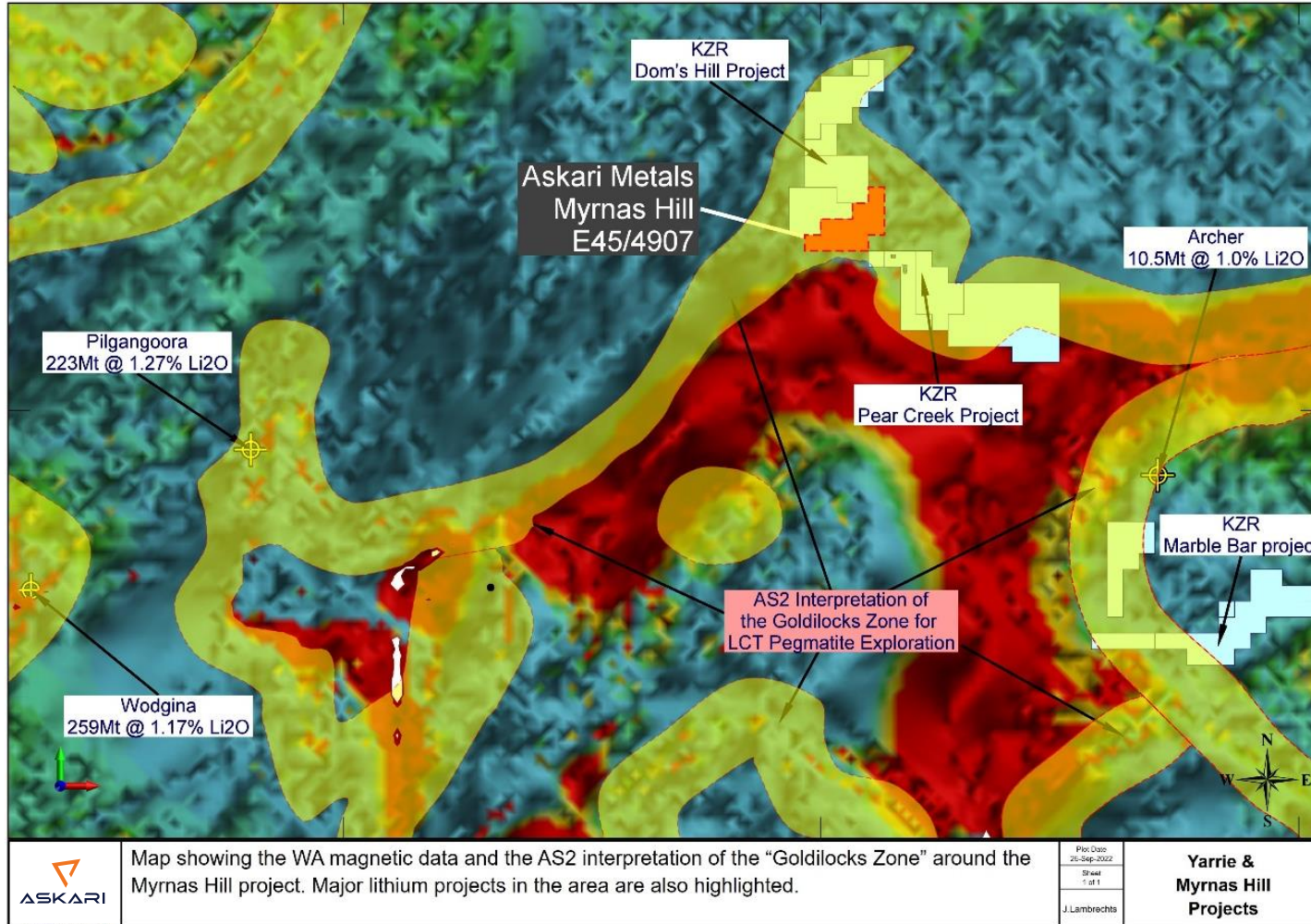
WESTERN AUSTRALIA



- Significant exploration potential - under-explored for lithium and has never been drill tested, highlighting a significant opportunity to make a greenfields lithium discovery
- Recent regional exploration success in close proximity to the Hillside Lithium Project
- Geological targeting has identified several areas of high-priority exploration zones
- There are hundreds of pegmatite outcrops in the greenstones within the Hillside Lithium Project greenstone area

MYRNAS HILL LITHIUM PROJECT

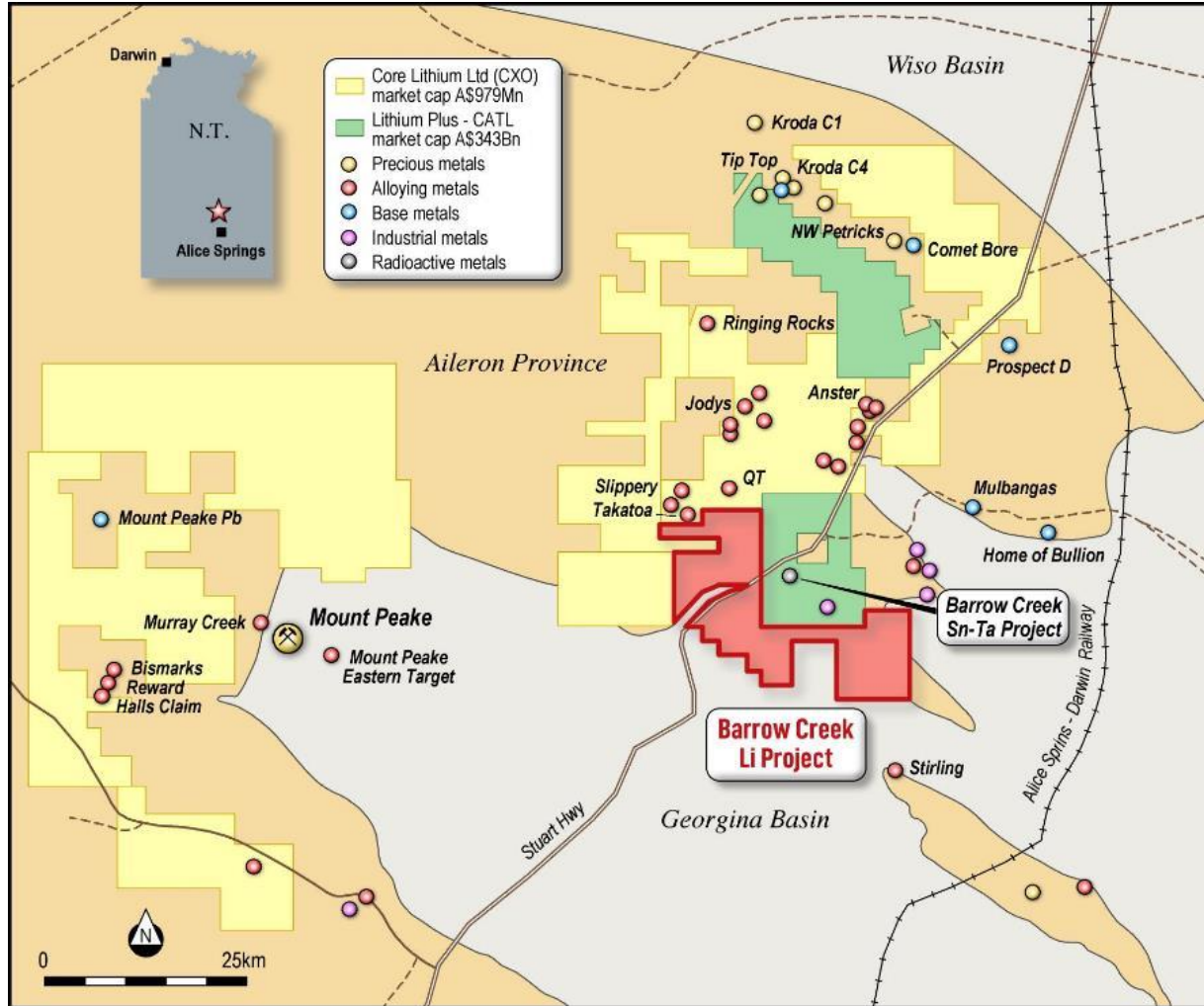
WESTERN AUSTRALIA



- Highly prospective for Lithium-Tin-Tantalum (Li-Sn-Ta) mineralisation
- Located ~ 50km from the world-class Pilgangoora Lithium Mine (ASX. PLS) – similar geological setting with target host rocks strongly analogous to that of the nearby world-class Pilgangoora and Wodgina Lithium Mines
- Located adjacent to KZR / SQM JV at DOM's Hill Lithium Project and KZR Pear Creek Lithium Project – recent exploration success by KZR has identified broad highly anomalous soil sample results and high-grade rock chip sample results
- Sits exclusively within the LCT Pegmatite "Goldilocks Zone"

BARROW CREEK LITHIUM AND REE PROJECT

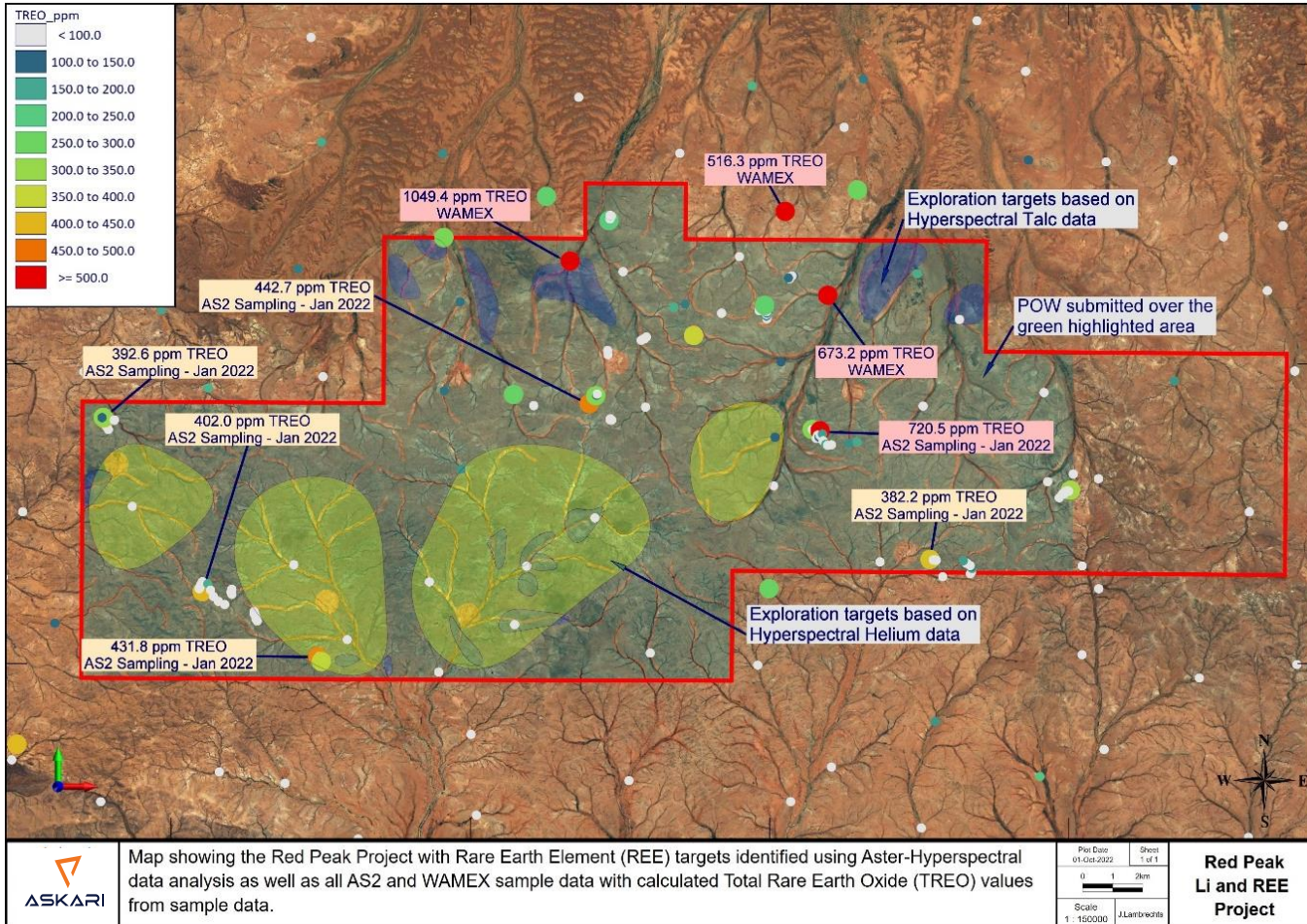
NORTHERN TERRITORY



- Extensive LCT-type pegmatites mapped and sampled
- Currently awaiting approval of permits to allow initial drilling to commence
- Strategically positioned with neighbouring Core Lithium and Lithium Plus Minerals
- Results from field reconnaissance program identified prospectivity for Rare Earth Elements, with Total Rare Earth Oxide (TREO) results of up to 4,553 ppm TREO
- Field research program underway with UWA and Core Lithium

RED PEAK REE PROJECT

WESTERN AUSTRALIA



- Located in the highly sought after Gascoyne Region of WA
- Adjacent to and along strike of Krakatoa Resources Limited – Mt Clere REE Project
- Initial sampling of the pegmatites has confirmed REE mineralisation
- Soil auger program to confirm REE mineralisation in enriched monazite sands

SampleID	La_ppm	Ce_ppm	Pr_ppm	Nd_ppm	La2O3	Ce2O3	Pr2O3	Nd2O3	TREO
AS202527	173	284	30.3	103	202.89	332.65	35.46	120.14	720.54
AS201996	121	153	18.7	58	141.91	179.21	21.88	67.65	442.75
AS201989	94.6	152	20.3	70.1	110.95	178.04	23.76	81.76	431.79
AS202666	76.1	142	19	66.3	89.25	166.32	22.24	77.33	402.04
AS202659	87.2	154	16.3	47.5	102.27	180.38	19.08	55.40	392.64
AS201819	66.6	116	13.4	49.5	78.11	135.87	15.68	57.74	382.18
AS202512	82.9	137	14	46.8	97.23	160.47	16.38	54.59	356.63
AS201994	79.8	144	13.6	41.1	93.59	168.67	15.92	47.94	349.75
AS201801	52.4	80.6	11.4	47	61.45	94.41	13.34	54.82	320.38
AS202660	55.2	111	12.4	43.3	64.74	130.01	14.51	50.51	296.29
AS202000	62.4	99.1	12.1	40	73.18	116.08	14.16	46.66	278.98
AS202525	49.7	82.5	9.6	35.4	58.29	96.63	11.23	41.29	226.26
AS202549	41.7	87.9	7.85	26.6	48.91	102.96	9.19	31.03	210.22

Questions...

For further information, please contact:

Mr Gino D'Anna

Executive Director

Askari Metals Limited

M +61 400 408 878

E gino@askarimetals.com

Mr Johan Lambrecht

VP Exploration and Geology

Askari Metals Limited

M +61 431 477 145

E johan@askarimetals.com

ASX References and Compliance



Information contained within this announcement has been prepared based on reliance on ASX announcements as noted in the table below:

5 June 2023	Askari Turns Attention to Next Phase of Exploration at Uis
1 June 2023	Exploration Team Strengthened to Fast-Track Uis Lithium
25 May 2023	AS2 Completes Acquisition of Remaining 10% Interest at Uis
17 May 2023	Askari Intersects Broad Lithium Pegmatites in Uis Drilling
9 May 2023	Global Lithium Battery Supplier Completes Investment in AS2
13 April 2023	Askari Provides Exploration Update at Uis Lithium Project
11 April 2023	Askari Completes Acquisition of Initial 90% Interest EPL7345
30 March 2023	AS2 Completes Acquisition of Initial 80% interest in EPL8535
28 March 2023	Barrow Creek REE Exploration Program Completed
22 March 2023	Huayou Cobalt to make Strategic Investment in Askari Metals
07 March 2023	Phase II RC Drilling Underway at EPL 7345
15 February 2023	Phase I RC Drilling Underway at EPL 8535 - Uis Li Project
06 February 2023	High Grade Lithium, Tin and Tantalum Results at EPL 8535
02 February 2023	Project-Wide Detailed Exploration Underway at Uis Li Project
25 January 2023	Barrow Creek Exploration Highlights High-Grade REE Potential
17 January 2023	RC Drilling Program at Horry Delivers High-Grade Results