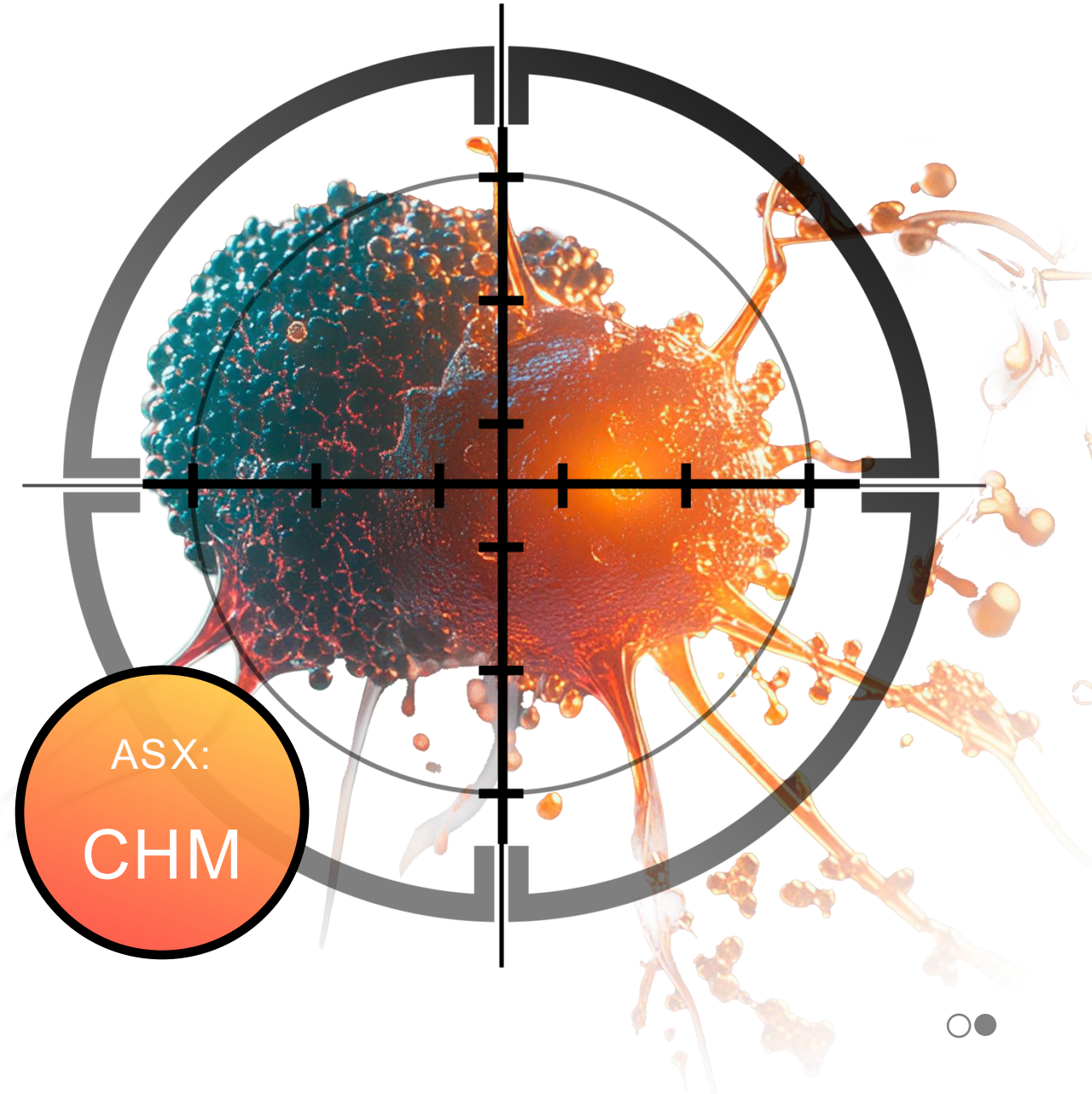




CHIMERIC

PIONEERS IN CELL THERAPY

CHM CDH17 Update
September 2025



ASX:
CHM



DISCLAIMER

Certain statements contained in this presentation, including, without limitation, statements containing the words “believes,” “plans,” “expects,” “anticipates,” and words of similar import, constitute “forward-looking statements.” Such forward-looking statements involve known and unknown risks, uncertainties and other factors that may cause the actual results, performance or achievements of Chimeric (collectively, “Chimeric” or the “Company”) to be materially different from any future results, performance or achievements expressed or implied by such forward-looking statements.

Such factors include, among others, the following: the risk that our clinical trials will be delayed and not completed on a timely basis; the risk that the results from the clinical trials are not as favourable as we anticipate; the risk that our clinical trials will be more costly than anticipated; and the risk that applicable regulatory authorities may ask for additional data, information or studies to be completed or provided prior to their approval of our products.

Given these uncertainties, undue reliance should not be placed on such forward-looking statements. The Company disclaims any obligation to update any such factors or to publicly announce the results of any revisions to any of the forward-looking statements contained herein to reflect future events or developments except as required by law.

This presentation may not contain all the details and information necessary for you to make a decision or evaluation. Neither this presentation nor any of its contents may be used for any other purpose without the prior written consent of the Company.



INVESTMENT HIGHLIGHTS

4

4 Phase 1 clinical trials
under 3 FDA INDs at 4 leading US centres



Multiple clinical updates
in the next 12 months



Experienced leadership team
in cell therapy clinical development



CHM CDH17
the FIRST CDH17 CAR-T in clinical trials



First in class
CLTX-CAR for brain cancer



Robust and long life
patent portfolio

CORPORATE PROFILE

Stock code	ASX:CHM
Share price	\$0.003
52-week range	\$0.002-\$0.017
Market cap	~\$10m
Shares on issue	~3.2b



LEADERSHIP TEAM

EXPERTS IN CELL THERAPY DEVELOPMENT & COMMERCIALISATION



 Dr Rebecca McQUALTER
Chief Executive Officer



 Dr Jason LITTEN
Chief Medical Officer



 Dr Stephanie ASTROW
Chief Scientific Officer

EXPERIENCE

50+ Years of Cell Therapy Experience

EXPERTISE

50+ Development Programs

RESULTS

5/7 FDA-Approved CAR T Cell Therapies

AMGEN

juno
THERAPEUTICS

Celgene

Kite

YESCARTA

TECARTUS

NOVARTIS

Fcete
THERAPEUTICS

artiva

KYMRIAH[®]
(tisagenlecleucel)
Suspension for IV infusion

Abecma

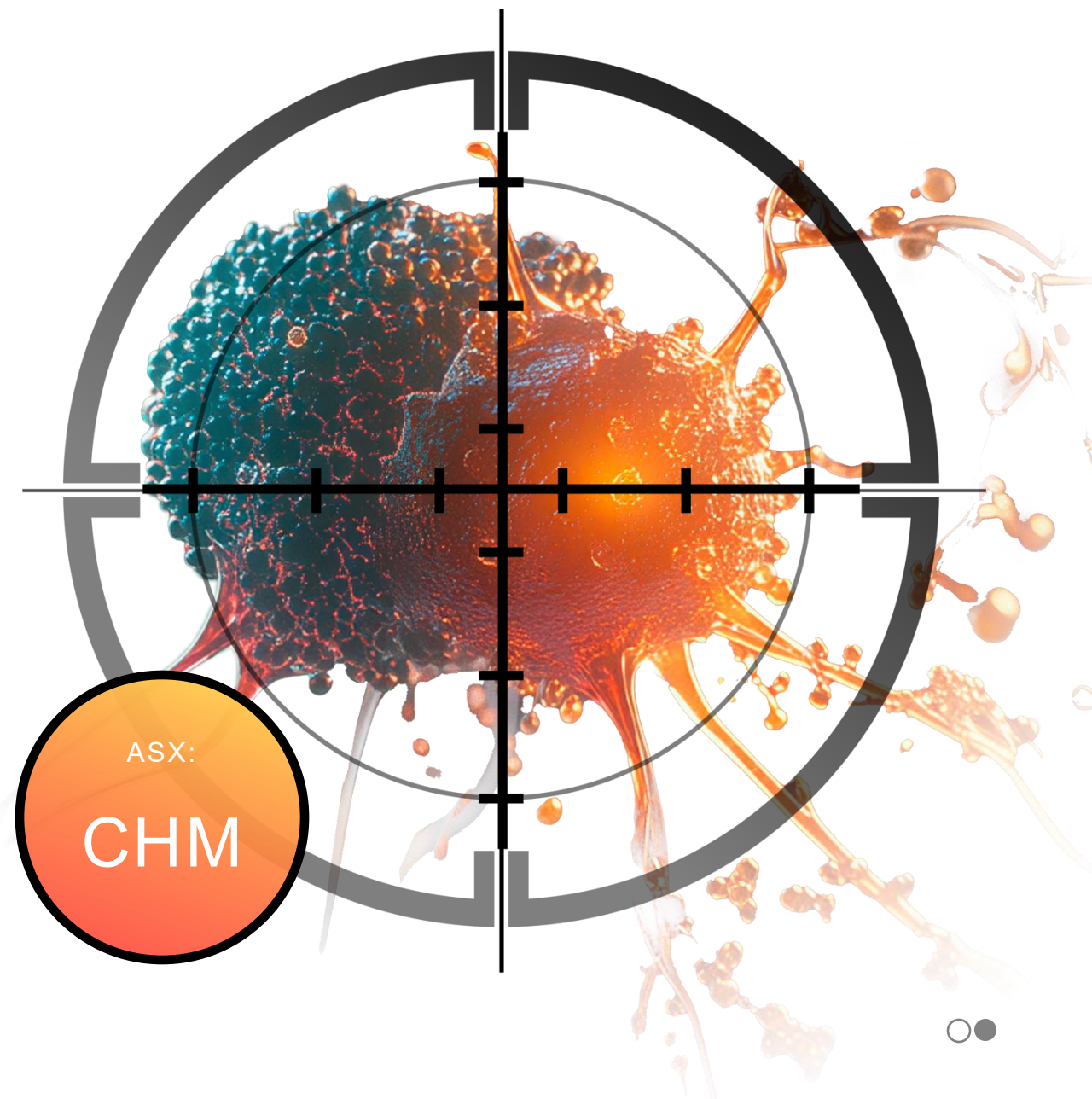
Breyanzi



CHM CDH17

Clinical Trial Update

September 2025





CDH17 OVERVIEW



Over a decade of development at the world-renowned cell therapy centre, The University of Pennsylvania



Compelling pre-clinical efficacy in gastric, pancreatic and neuroendocrine Cancers



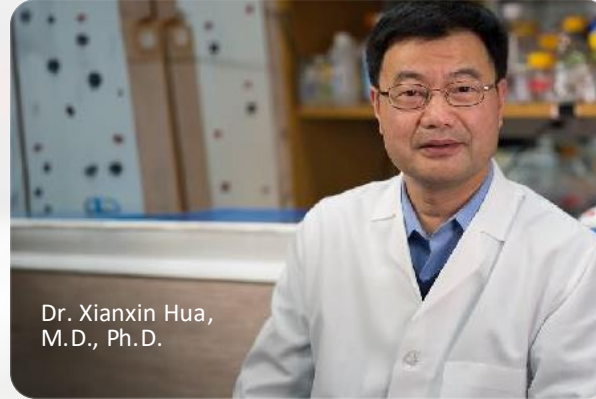
Pre-clinical models indicate no toxicity in healthy cells



This is the first CDH17 CAR-T Cell Therapy in clinical trials in the world



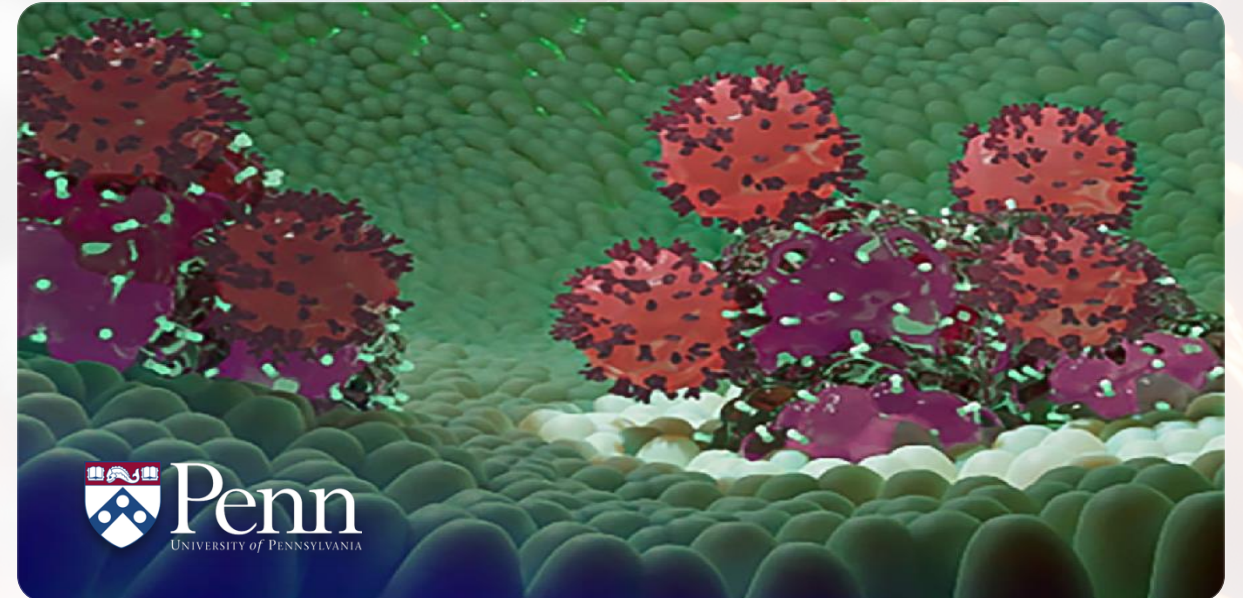
CDH17 is protein on the surface of Gastrointestinal cancers (green on purple cell in picture)



Dr. Xianxin Hua,
M.D., Ph.D.



Dr. Carl June M.D.

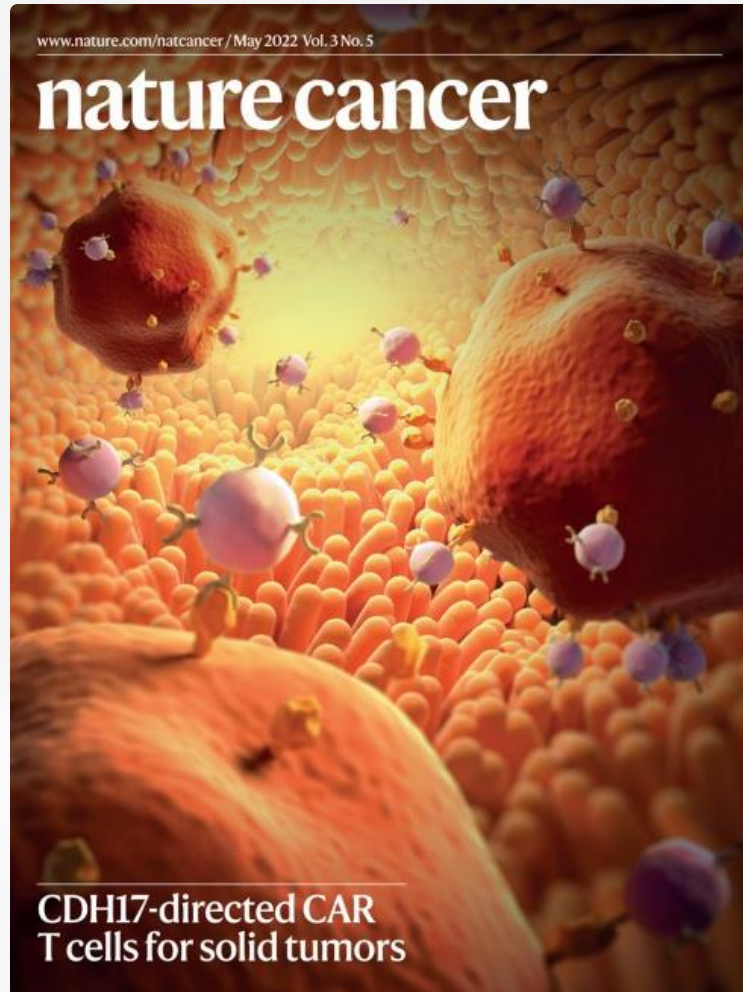




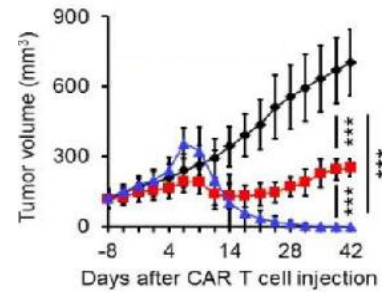
ENCOURAGING PRE-CLINICAL RESULTS

CDH17 CAR T induced complete eradication of tumours with no relapse in seven mouse models

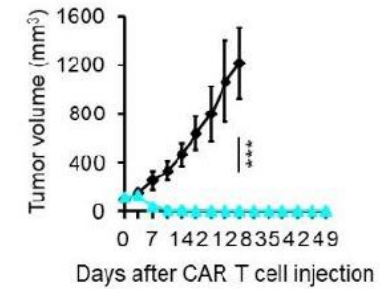
7



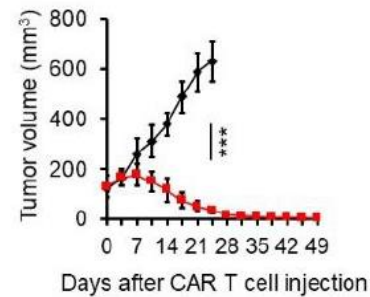
NEUROENDOCRINE TUMOURS



GASTRIC CANCER



PANCREATIC CANCER



CHM CDH17
CAR-T



Source: Feng et al., Nature Cancer, 2022



CHM CDH17 CAR-T PHASE 1 RECRUITING

The first CDH17 CAR T cell therapy in clinical trials globally

CHM CDH17 CAR-T

Technology from:



PHASE 1/2 TRIAL OPEN

4 sites actively recruiting

PERSONALISED CAR-T: AUTOLOGOUS

4 prestigious sites recruiting: Sarah Cannon, UPenn, UChicago, Emory

FDA IND clearance: Nov 23

Manufacturing: 10/10 successful runs; GMP Compliant

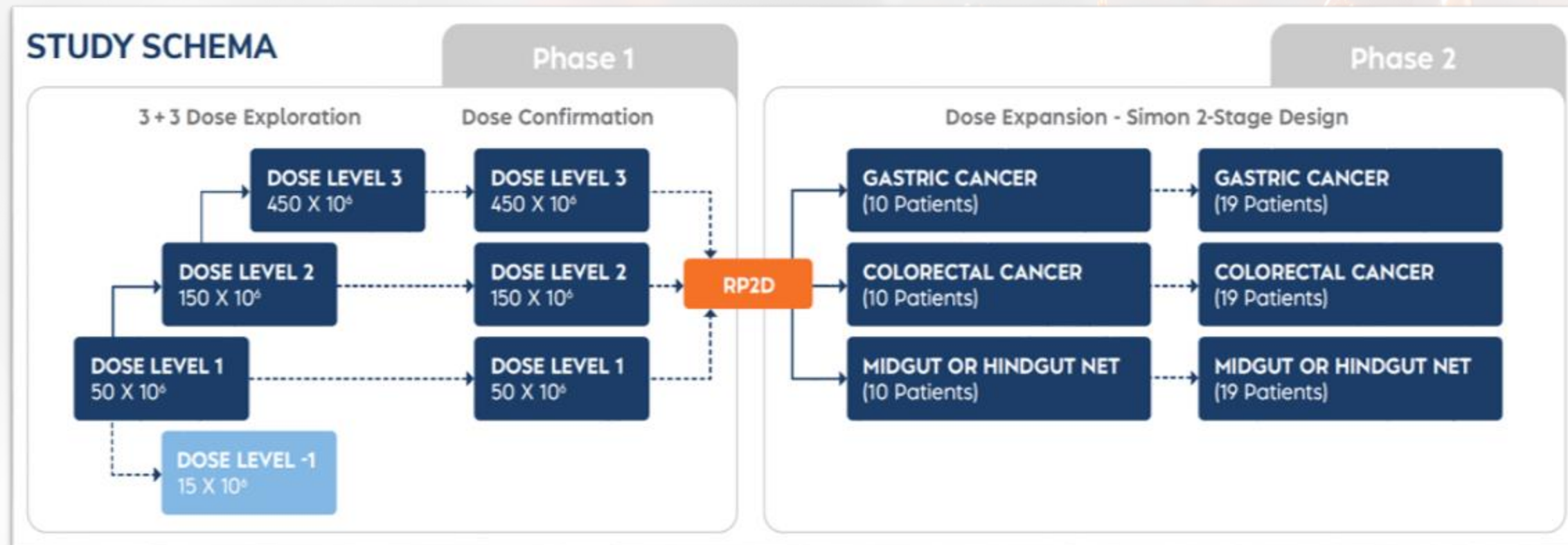
Phase 1/2 Trial Open in Colorectal, Gastric and Neuroendocrine Cancers

10 patients enrolled: 8 patients treated, 2 awaiting dosing assignment

N= up to 15 patients



Phase 1/2 Clinical Trial of CHM CDH17 Design



[NCT06055439](https://clinicaltrials.gov/ct2/show/study/NCT06055439)



CHM CDH17 PROGRESS AS AT 8 SEPTEMBER 2025

Dose Level	Status	Notes
1 50m	Completed	4 patients treated 1 patient remains on study
2 150m	Recruitment ongoing	4 patients treated
3 450m	Recruitment underway	2 patients awaiting dosing assignment
Manufacturing	GMP compliant	10 out of 10 successful runs



CLINICAL PRELIMINARY RESULTS

DOSE LEVEL 1 COMPLETED

50m Cells	Tumour Type	Status
Patient 1	CRC	No follow up
Patient 2	NET	Stable Disease until day 150 progression Grade 1 CRS
Patient 3	CRC	Stable Disease at day 270
Patient 4	CRC	Progressive Disease at day 28

CRC= Colorectal Cancer (Bowel Cancer)

NET= NeuroEndocrine Tumour (Intestinal NET)



CLINICAL PRELIMINARY RESULTS

DOSE LEVEL 2 Ongoing

150m Cells	Tumour Type	Status
Patient 5	CRC	Stable Disease 90days Tumour Shrinkage 12%
Patient 6	NET	Treated. Pending Day 28 scan Grade 3 CRS
Patient 7	CRC	Treated.
Patient 8	CRC	Treated.

CRC= Colorectal Cancer (Bowel Cancer)

NET= NeuroEndocrine Tumour (Intestinal NET)



CHM CDH17 PROGRESS

RECRUITMENT UNDERWAY

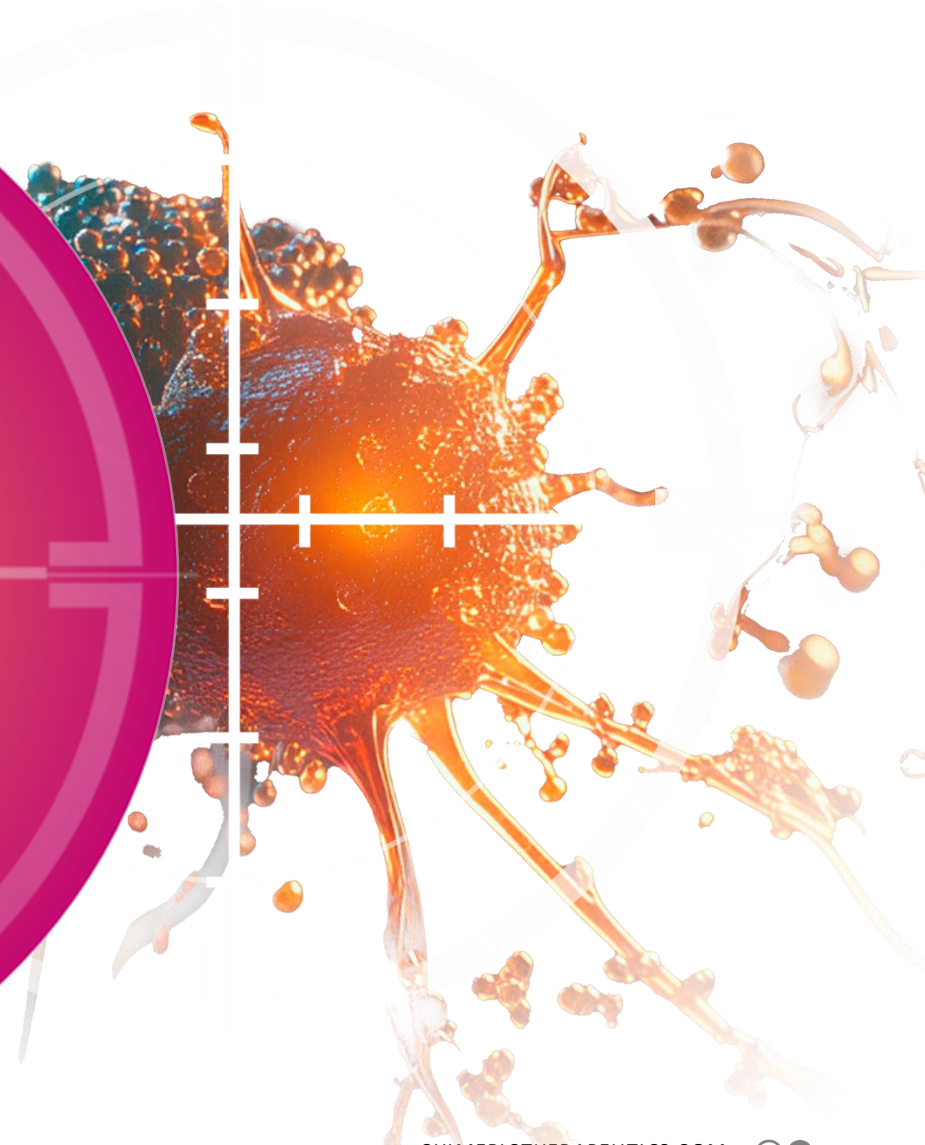
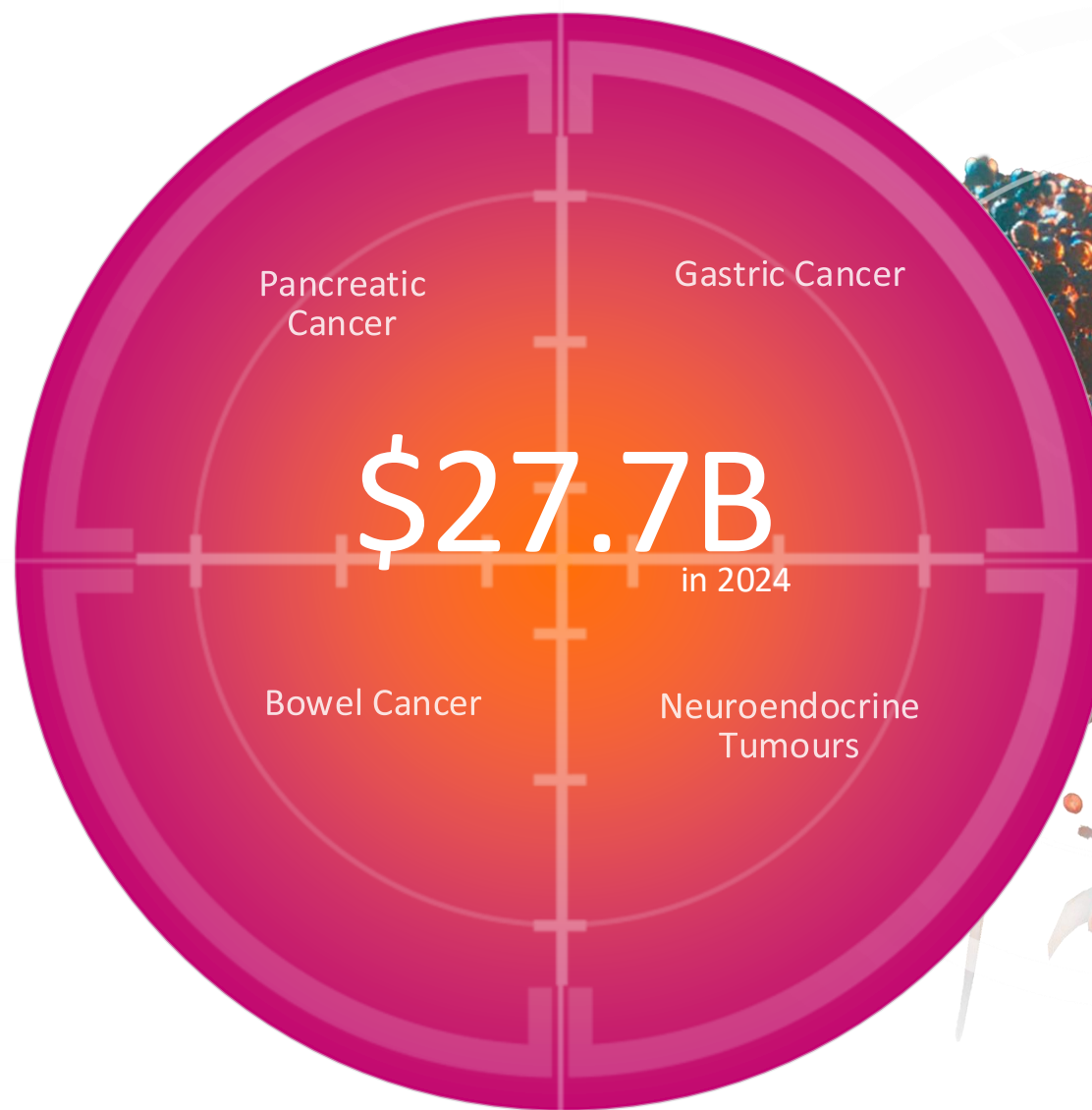
TBD Dose of Cells	Tumour Type	Status
Patient 9	NET	Manufactured. Dose yet to be assigned
Patient 10	NET	Manufactured. Dose yet to be assigned
TBD		
TBD		

CRC= Colorectal Cancer (Bowel Cancer)

NET= NeuroEndocrine Tumour (Intestinal NET)



TOTAL GLOBAL MARKET SIZE





SUMMARY + FY26 CATALYSTS

●●
CHM CDH17
CHM 2101

8 patients treated
10/10 manufacturing runs
Anti-tumour activity observed
No safety issues to date
No off-target effects

FY26 Deliverables

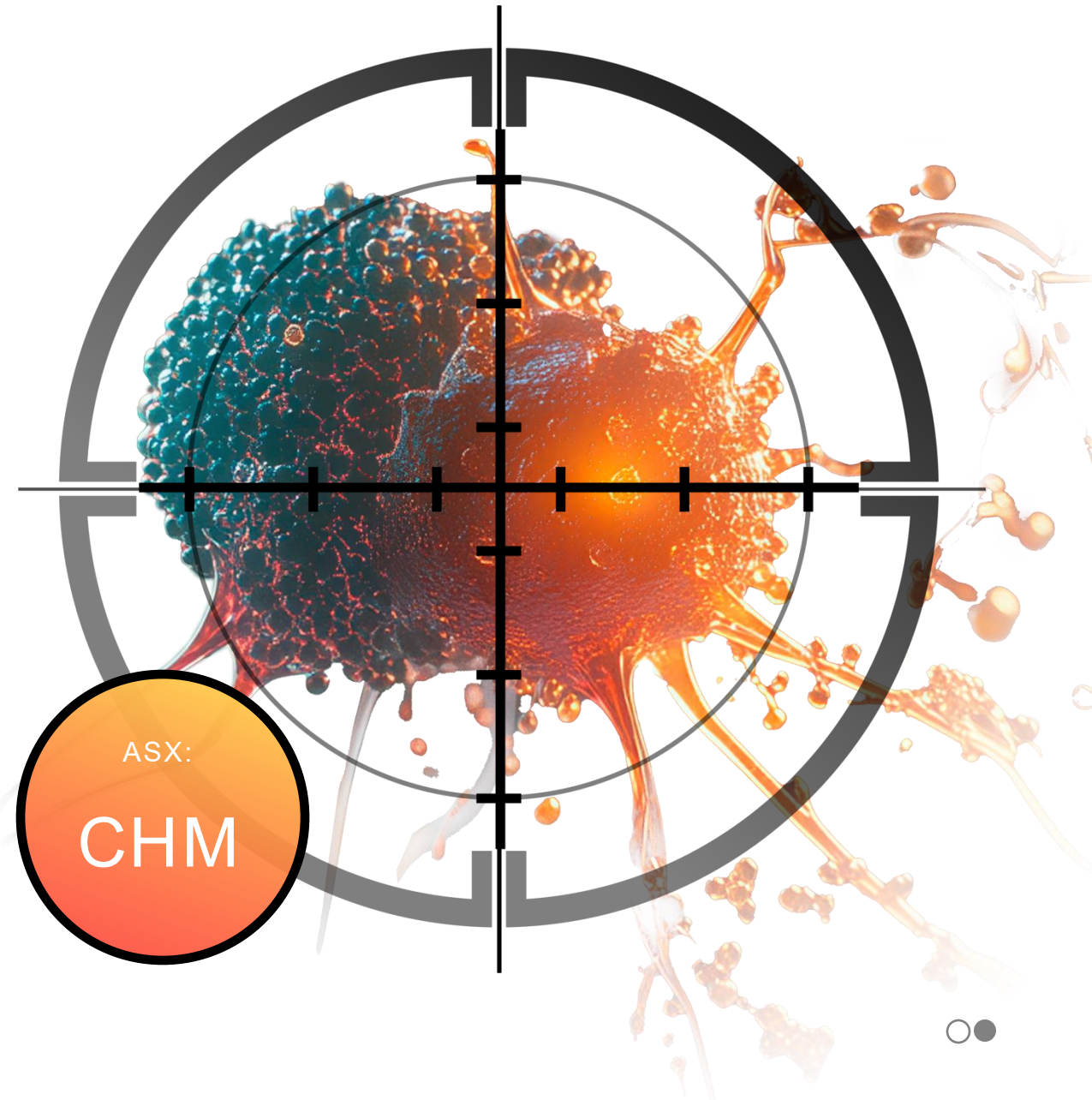
Complete Dose level 2
Commence Dose level 3 (if appropriate)
Conclude Phase 1
Phase 2 readiness



CHIMERIC

PIONEERS IN CELL THERAPY

investors@chimerictherapeutics.com





CHM: BROAD PORTFOLIO

3 novel cell therapies; 4 clinical trials

CHM CDH17 CAR-T

Technology from:



PHASE 1/2 TRIAL OPEN

4 sites active

CHM CORE-NK 'OFF THE SHELF' NK

Technology from:



PHASE 1B
TRIAL OPEN

MD Anderson

PHASE 1B
TRIAL OPEN

Case Western

CHM CLTX

Technology from:



Phase 1A completed: COH

PHASE 1B TRIAL

1 site active



CHM CDH17 CAR T

TARGET COMPETITORS IN DETAIL

	Preclinical		Phase 1	
Cell Therapy	CDH17 CAR T Ospedale San Raffaele	CHM CDH17 CDH17 CAR NK Chimeric Therapeutics	CHM CDH17 CDH17 CAR T Chimeric Therapeutics	
	ARB011 CDH17 NK/T Arbele Bio	ARB001 CDH17 CAR T Arbele Bio		
	CDH17 CAR T +IL7/21 Eastern Theater General Hospital of PLA			
Non-Cell Therapy	CDH17 x pCAD ADC Novartis	AMT-676 CDH17 ADC Multitude Therapeutics	TORL-3-600 CDH17 ADC TORL Biotherapeutics	Cabotamig (ARB202) CDH17 ADC Arbele Bio
	CDH17 A4 CDH17 mAb Oxford Biotherapeutics	ARB101a CDH17 ADC Arbele Bio	BI 905711 CDH17xTRAILR2 bsAb Boehringer Ingelheim	

Updated 03Jul24

Legend

- Chimeric programs
- T cell therapies
- NK or NK/T therapies
- Australian biotech

CHM
CDH17

CHM 2101

