



ARGENT MINERALS LIMITED ASX:ARD

INVESTOR PRESENTATION

OCTOBER 2022

DISCLAIMER

This investor presentation (Presentation) has been prepared by Argent Minerals Limited (ABN: 89 124 780 276) (Argent Minerals, Argent or the Company). It should not be considered as an offer or invitation to subscribe for or purchase any securities in the Company or as an inducement to make an offer or invitation with respect to those securities. No agreement to subscribe for securities in the Company will be entered into on the basis of this Presentation.

This Presentation contains summary information about Argent Minerals, its subsidiaries and their activities which is current as at the date of this Presentation. The information in this Presentation is of a general nature and does not purport to be complete nor does it contain all the information which a prospective investor may require in evaluating a possible investment in Argent Minerals.

By its very nature exploration for minerals is a high-risk business and is not suitable for certain investors. Argent Minerals securities are speculative. Potential investors should consult their stockbroker or financial advisor. There are a number of risks, both specific to Argent Minerals and of a general nature which may affect the future operating and financial performance of Argent Minerals and the value of an investment in Argent Minerals including but not limited to economic conditions, stock market fluctuations, silver, lead, zinc, copper and gold price movements, regional infrastructure constraints, securing drilling rigs, timing of approvals from relevant authorities, regulatory risks, operational risks and reliance on key personnel and foreign currency fluctuations.

Certain statements contained in this Presentation, including information as to the future financial or operating performance of Argent Minerals and its projects, are forward-looking statements that:

- may include, among other things, statements regarding targets, estimates and assumptions in respect of mineral resources and mineral reserves and anticipated grades and recovery rates, production and prices, recovery costs and results, capital expenditures, and are or may be based on assumptions and estimates related to future technical, economic, market, political, social and other conditions;
- are necessarily based upon a number of estimates and assumptions that, while considered reasonable by Argent Minerals, are inherently subject to significant technical, business, economic, competitive, political and social uncertainties and contingencies; and,
- involve known and unknown risks and uncertainties that could cause actual events or results to differ materially from estimated or anticipated events or results reflected in such forward-looking statements.

Argent Minerals disclaims any intent or obligation to update publicly any forward-looking statements, whether as a result of new information, future events or results or otherwise. The words 'believe', 'expect', 'anticipate', 'indicate', 'contemplate', 'target', 'plan', 'intends', 'continue', 'budget', 'estimate', 'may', 'will', 'schedule' and similar expressions identify forward-looking statements.

All forward-looking statements made in this Presentation are qualified by the foregoing cautionary statements. In particular, the corporate mission and strategy of the Company set forth in this Presentation represents aspirational long-term goals based on current expectations. Investors are cautioned that forward-looking statements are not guarantees of future performance and accordingly investors are cautioned not to put undue reliance on forward-looking statements due to the inherent uncertainty therein.

No verification: Although all reasonable care has been undertaken to ensure that the facts and opinions given in this presentation are accurate, the information provided in this Presentation has not been independently verified.

All production related images in this presentation are not Argent Minerals Limited assets, including the images on the cover and in the header.

CAPITAL STRUCTURE

Capital Structure

Ordinary shares (ASX:ARD)	885.6M
Share price (Avg Oct 2022)	\$0.017
Market Capitalisation	\$15.05M
Cash	\$1.4M
Un-Listed Options	21M
ASX Listing	3 April 2008
Top 20 shareholders	40.3%

Board & Management

Peter Michael	Chairman (Non-Exec)
Pedro Kastellorizos	Managing Director BSc, MAusIMM
George Karageorge	Director (Non-Exec) App BSc, MAusIMM
David Greenwood	Director (Non-Exec) BSc (Hons)
Kavi Bekarma	Company Secretary BSc, MPA, CA



KEY HIGHLIGHTS



- Argent Minerals agrees to acquire 100% ownership of the Copperhead Project within the highly prospective Gascoyne Region, Western Australia
- The acquisition will ensure and enable short to long term value and significant news flow for all shareholders.
- Significant emerging Mineral Province with Major Companies and Acquisitions surrounding the tenement portfolio.
- Exploration will concentrate on the discovery of Copper-Zinc-Nickel-REE and PGE.
- Acquisition fits in with the Argent Minerals base metal strategy in WA and NSW.

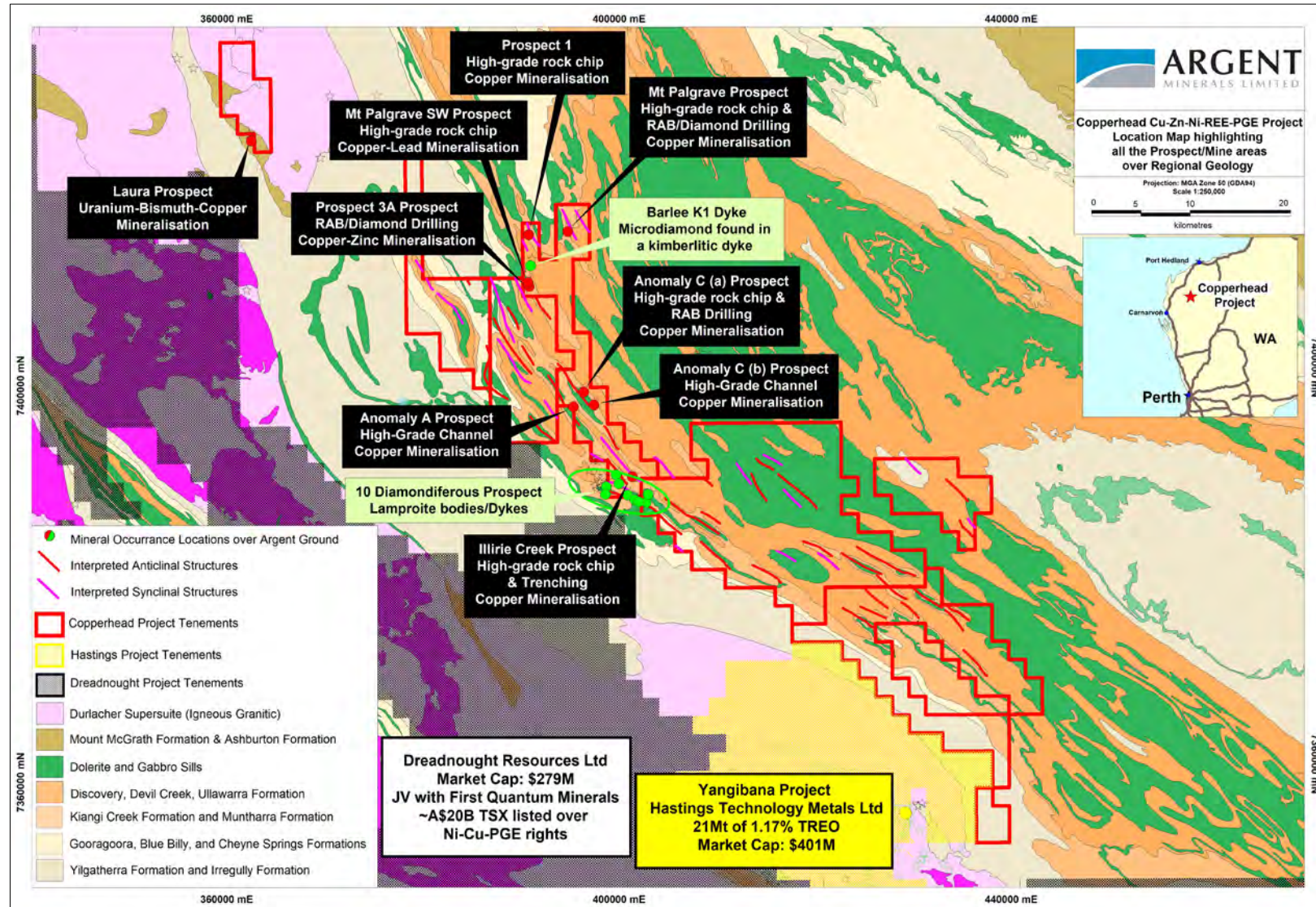


COPPERHEAD CU-ZN-REE NI-PGE ACQUISITION



- Major Acquisition of ~1,038 km² of granted exploration licenses across 9 Exploration Licence within the highly prospective underexplored region of Upper Gascoyne, Western Australia
- Project location is approximately 270km east-northeast of Carnarvon
- Significant emerging Mineral Province with Major Companies and Acquisitions

- Project contains 6 Cu Projects with the portfolio
- ASX: RIO –Rio Tinto Limited (A\$36.5B)
- ASX: FMG –Fortescue Metals (A\$60B)
- TSX:FQM (A\$20B) \$15.5M JV with Dreadnought over Ni-Cu-PGM Rights
- ASX: HAS -Hastings Technology Metals (A\$401M)
- ASX: DRE –Dreadnought (A\$340M)
- ASX:LNR –Lanthanein Resources (A\$40M)



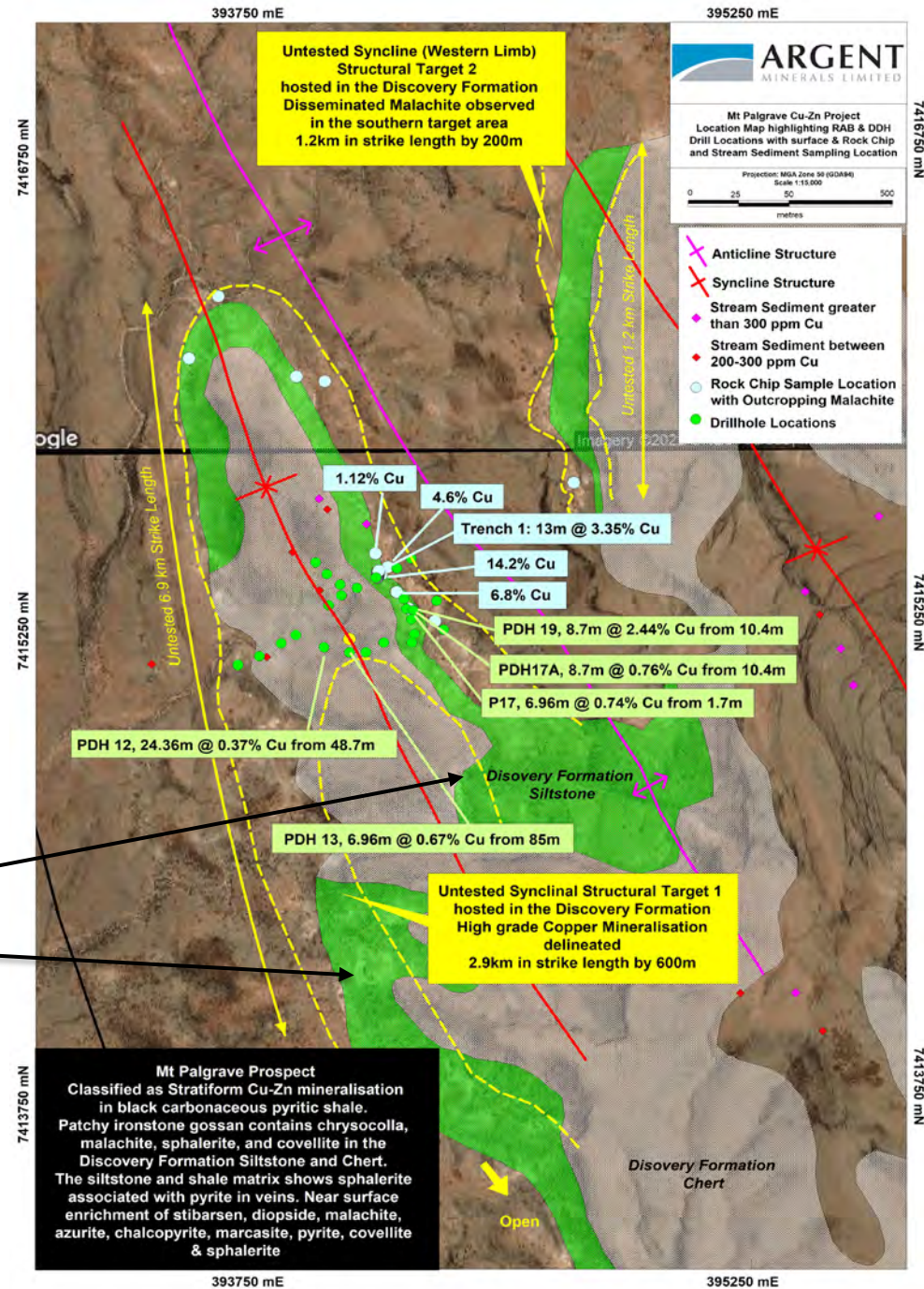


- Discovery Formations are major targets for sediment-hosted base-metal deposits and hosts stratabound copper and zinc mineralization at Mount Palgrave and Illirie Creek.
- Discovery Formation and Narimbunna Dolerite display numerous domal and folding patterns reflecting synclines and anticlines - potentially hosting Cu & Ni-PGE mineralisation.
- Southeast project tenement contains a monzogranite of the Duralcher Supersuite, which is also hosts Hastings Technology Metals, Yangibana REE deposit located adjacent to the Project tenements in the south. This north-western tenement also contains mapped pegmatite dykes which are considered prospective for REE.
- Known base metal mineralisation within the project appears to be preferentially located along carbonaceous and pyritic shales of the Discovery and Kiangi Creek Formations oriented along or close to synclinal/anticline/faults and are considered important for future target exploration.

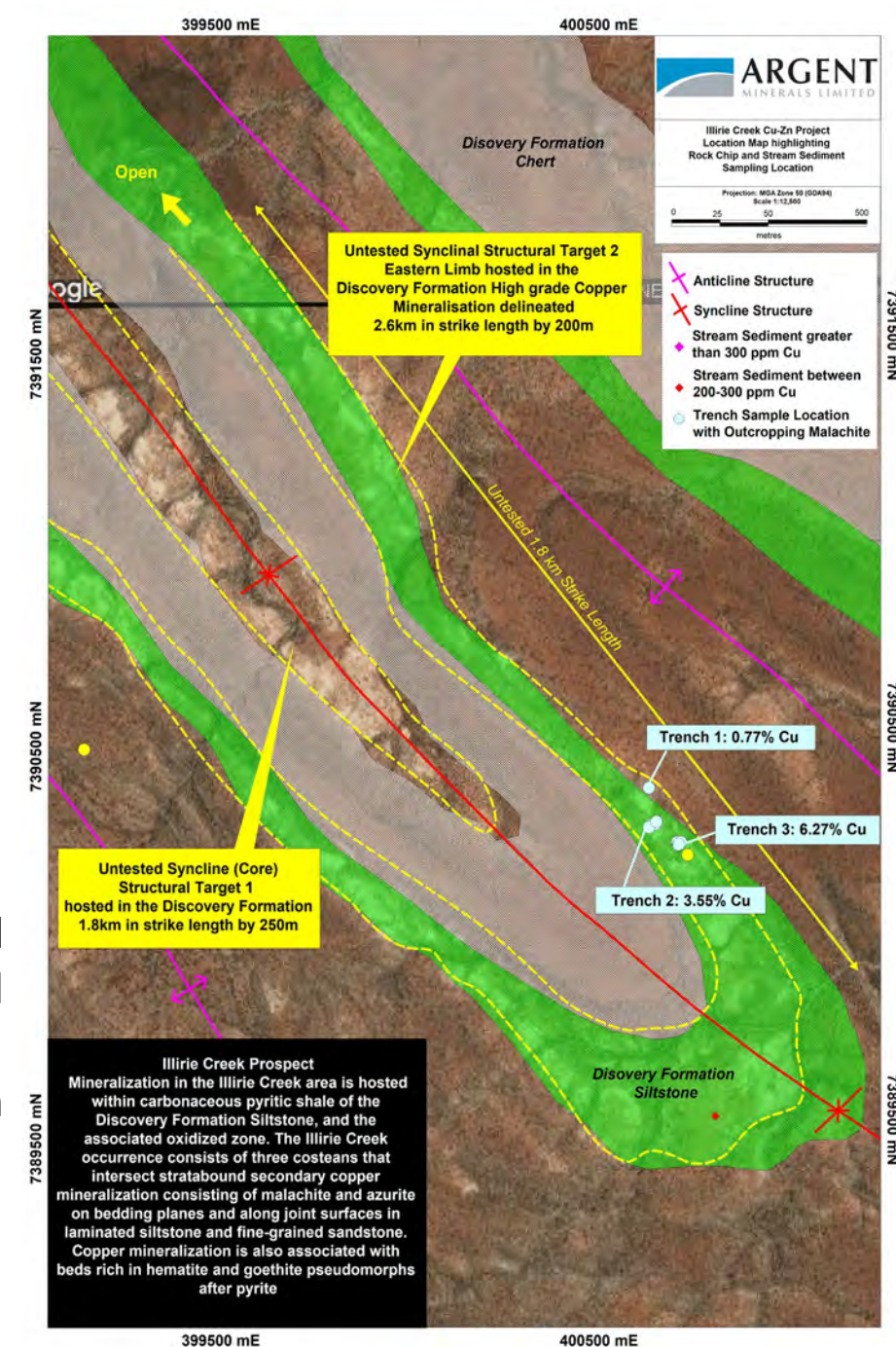
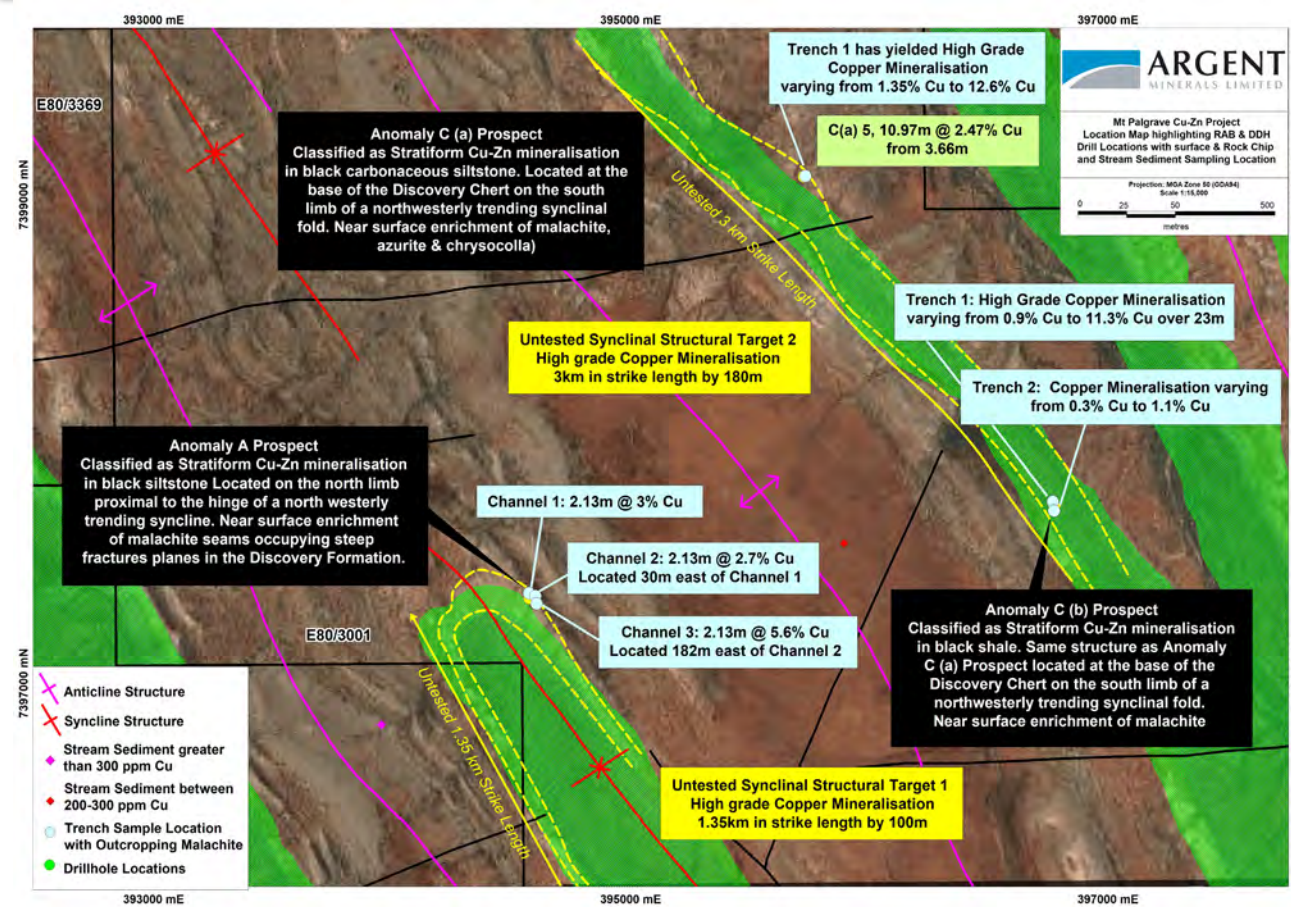
MT PALGRAVE PROSPECT WITH UNTESTED TARGETS

- Mt Palgrave Copper-Zinc Project is situated within the northern portion of E80/3001.
- Only exploration was conducted in 1967 with high grade copper mineralisation delineated at surface and near depth.
- Mineralisation is hosted within the Discovery Formation along synclinal structures.
- Extensive structural and lithological targets have been defined.

Excellent ground control based on the Discovery Formation Siltstones (highlighted as light coloured zone)



E80/3001 MORE CU PROSPECTS & UNTESTED TARGETS



- Extensive structural control copper mineralisation hosted within poorly tested synclinal zones – copper is associated with the Discovery Formation Siltstones
- No follow up drilling from shallow copper mineralisation intersected from 1967 drilling campaign
- Extensive structural and lithological targets have been defined.

REE TARGETS WEST OF HASTINGS PROJECT REE DEPOSIT

Regional Thourium Radiometrics highlight potential REE targets.

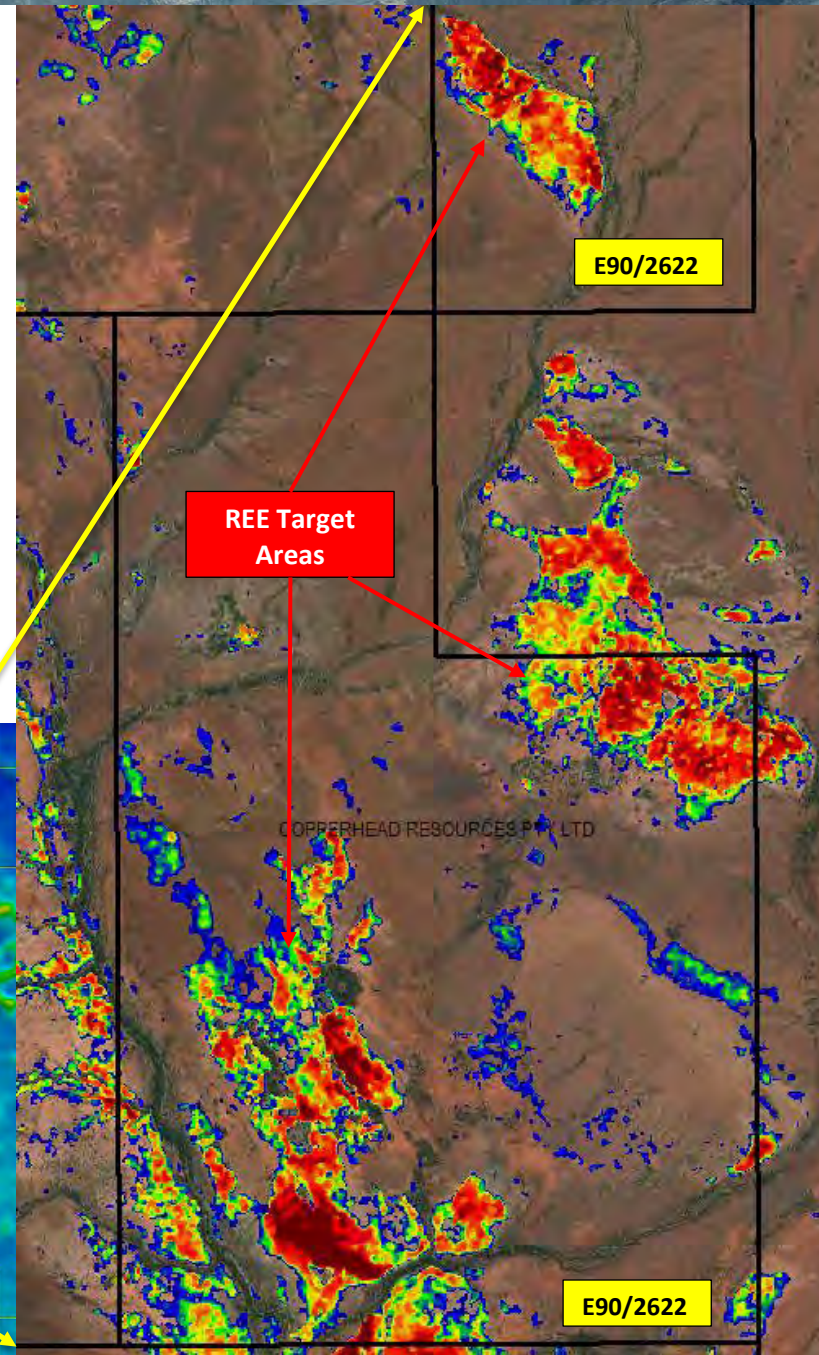
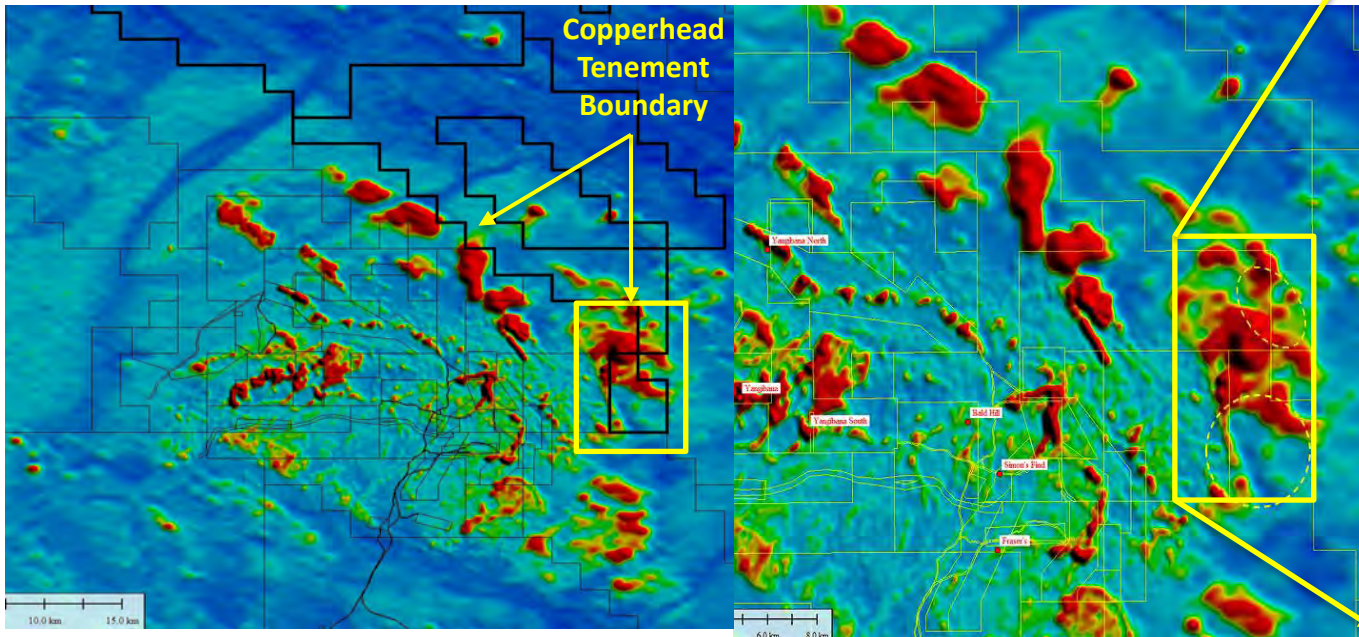
Targeted as it borders the same mapped geology as Hasting's Yangibana REE deposit, comprising: Durlacher supersuite (igneous granitic complex) bordering metasedimentary siliciclastic.

Further work by LNR (high grade rock chips from REE bearing ironstones) highlights potential for REE's

Structure continuous from Copperhead south into the LNR tenure

LNR Lyon 16 and 17 prospects on this border with Lyon 22 structure striking toward the Copperhead tenure

True colour image of targets with Spectral endmember 14 (Fluorapatite) targets highlighted, agreeing with the Th-radiometrics. These represent high value targets



HIGHLY PROSPECTIVE REGIONAL LITHOLOGICAL & STRUCTURAL TARGETS



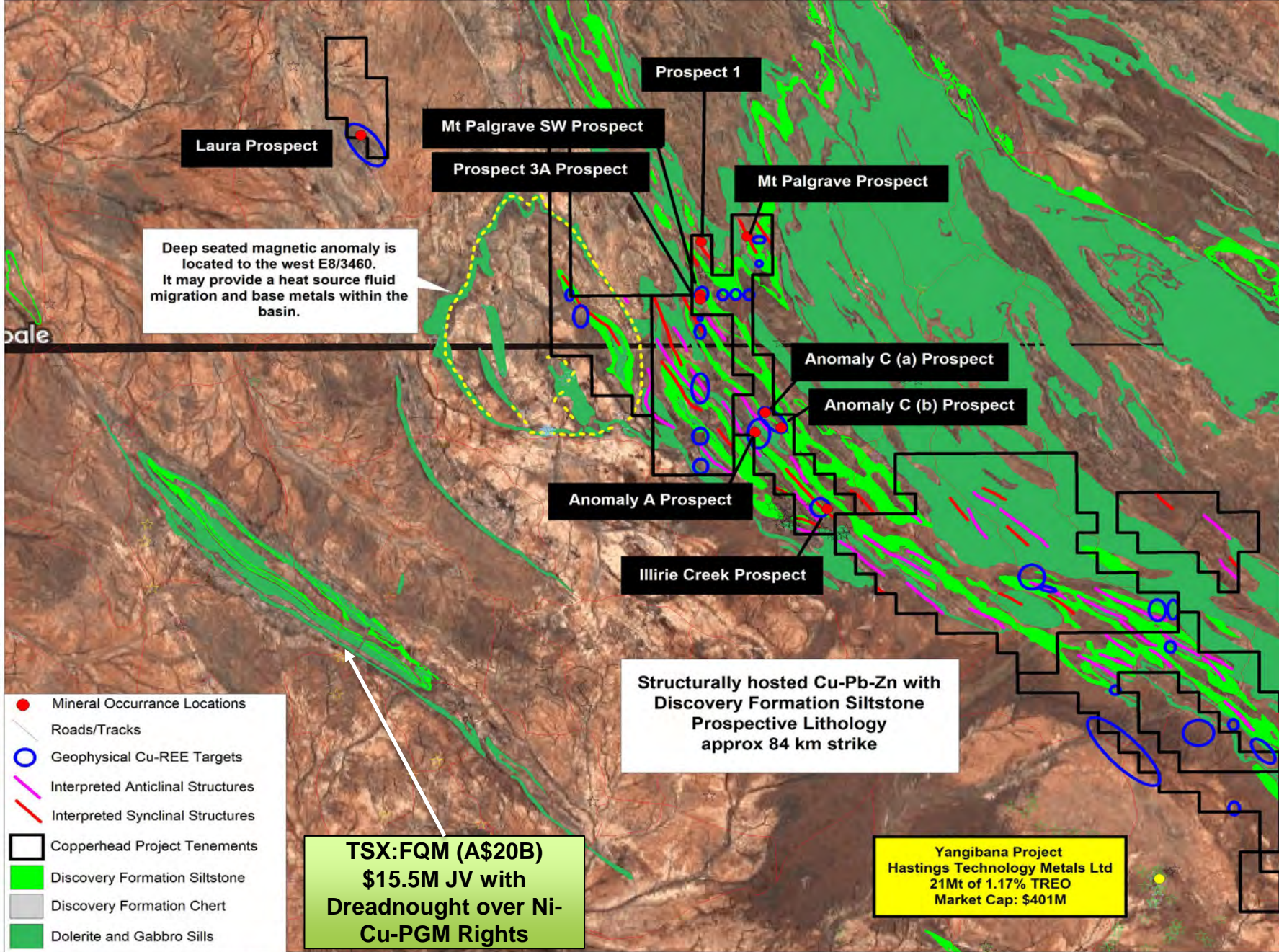
350000 mE

400000 mE

450000 mE

7425000 mN

7425000 mN



Deep seated magnetic anomaly is located to the west E8/3460. It may provide a heat source fluid migration and base metals within the basin.

Laura Prospect

Mt Palgrave SW Prospect

Prospect 3A Prospect

Prospect 1

Mt Palgrave Prospect

Anomaly C (a) Prospect

Anomaly C (b) Prospect

Anomaly A Prospect

Illirie Creek Prospect

Structurally hosted Cu-Pb-Zn with Discovery Formation Siltstone Prospective Lithology approx 84 km strike

Copperhead Cu-Zn-Ni-REE-PGE Project Location Map highlighting Cu-REE Targets with Regional Structural & Lithological Zones

Projection: MGA Zone 50 (GDA94)
Scale 1:500,000



Layered Mafic Ni-Cu-PGE Gabbro/Dolerite Sills Prospective Lithology approx 76 km strike

- Mineral Occurrence Locations
- Roads/Tracks
- Geophysical Cu-REE Targets
- Interpreted Anticlinal Structures
- Interpreted Synclinal Structures
- Copperhead Project Tenements
- Discovery Formation Siltstone
- Discovery Formation Chert
- Dolerite and Gabbro Sills

TSX:FQM (A\$20B)
\$15.5M JV with Dreadnought over Ni-Cu-PGM Rights

Yangibana Project
Hastings Technology Metals Ltd
21Mt of 1.17% TREO
Market Cap: \$401M

350000 mE

400000 mE

450000 mE

7375000 mN

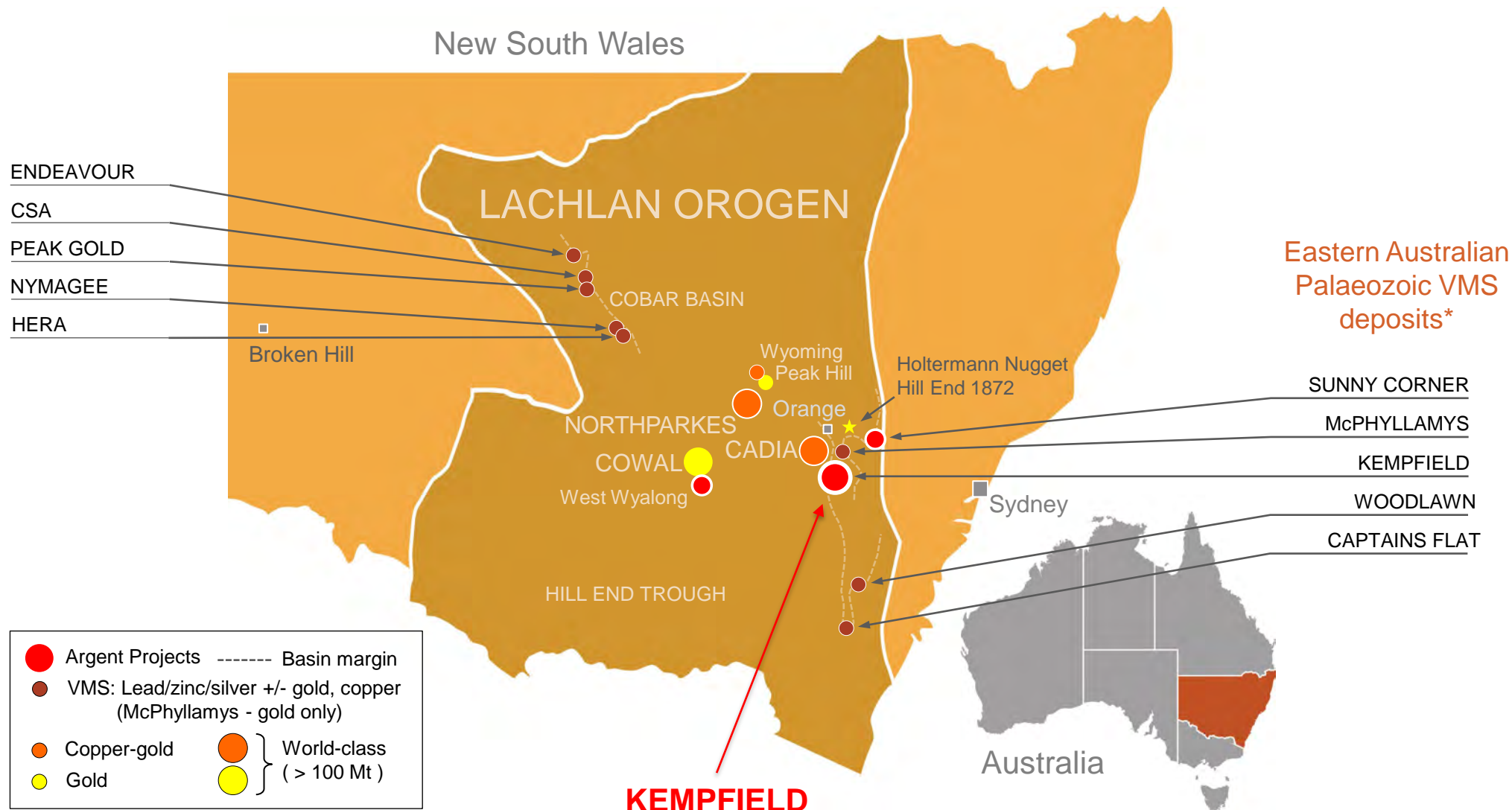
7375000 mN



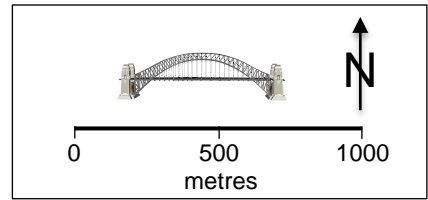
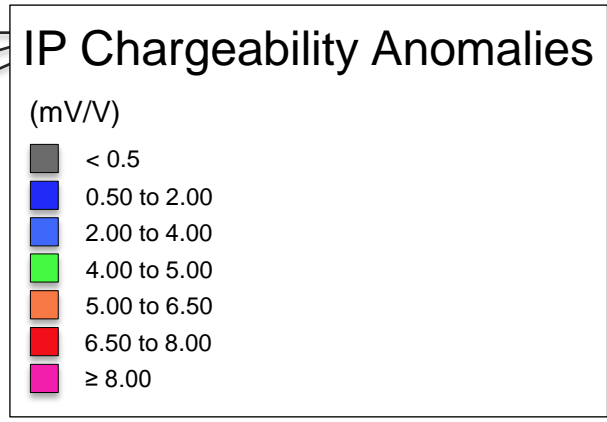
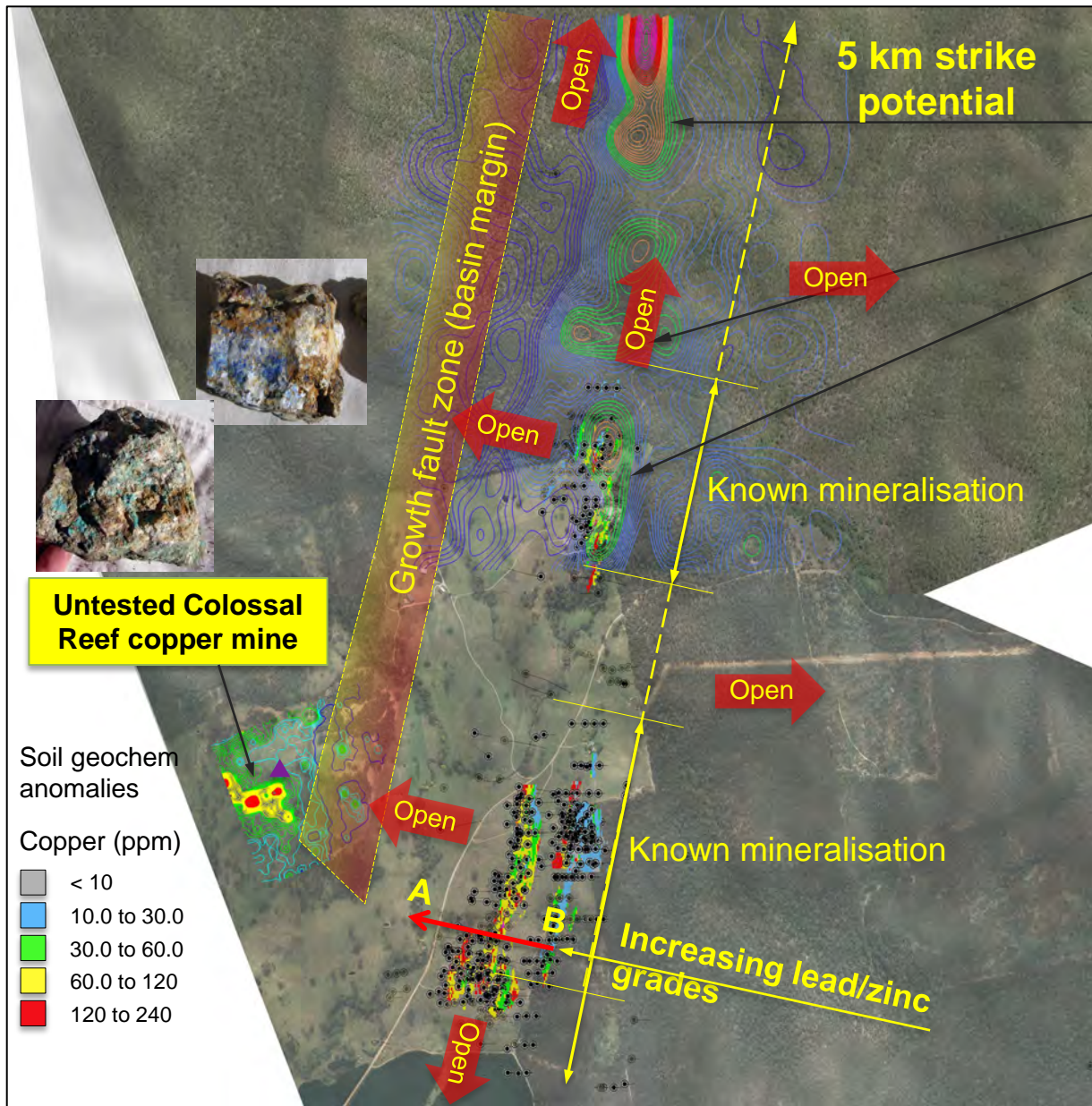
- The Copperhead project has undergone very limited historical exploration and is considered prospective for high prospective and underexplored Cu-Zn-Ni-PGE-REE within the underexplored Gascoyne Region.
- A total of 26 target areas of interest have been defined across the project tenements. These include 21 base metal and 5 REE targets selected over known mineralised trends, within favourable lithology and where anomalous responses are evident.
- Potential structural strataform Cu-Zn mineralisation hosted within the Discovery Formation has been estimated to be over **84km** within the Project areas.
- Layered mafic Ni-Cu-PGE potential within the gabbro/dolerite lithology has over **76km** within the Project areas.

KEMPFIELD STRATEGICALLY POSITIONED IN WORLD-CLASS NEIGHBOURHOOD

- HIGHLY PRODUCTIVE GEOLOGICAL TERRANE
- COMPELLING PEER GROUP: RICH VMS DEPOSITS AT BASIN MARGINS



SUBSTANTIAL OPEN HIGHLY PROSPECTIVE UNTESTED AREAS



EXPLORATION STRATEGY INTERPRETED LENS/ FEEDER FOCUS



View toward the North-East

**INTERPRETED VMS LENS AND
FEEDER ZONE AREAS**
(conceptual targets shown- untested)

**Colossal Reef
Copper mine**

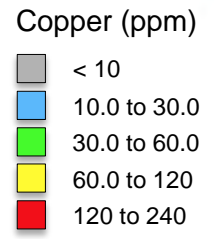
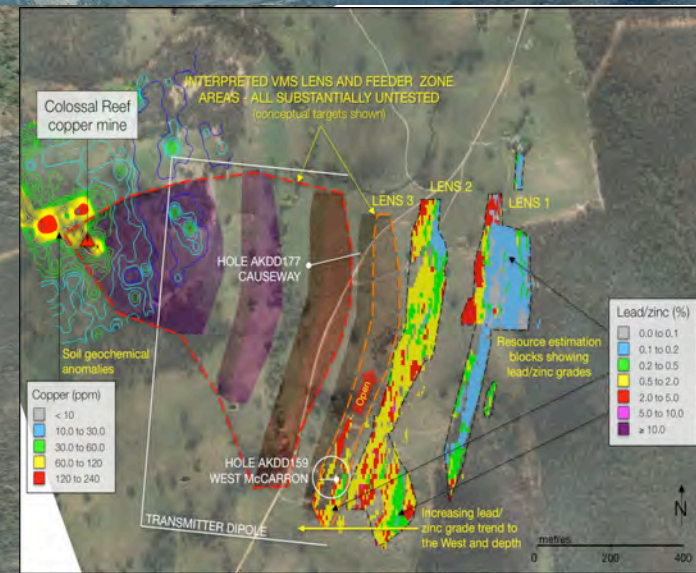
Quarries Zone

LENS 1

LENS 2

LENS 3

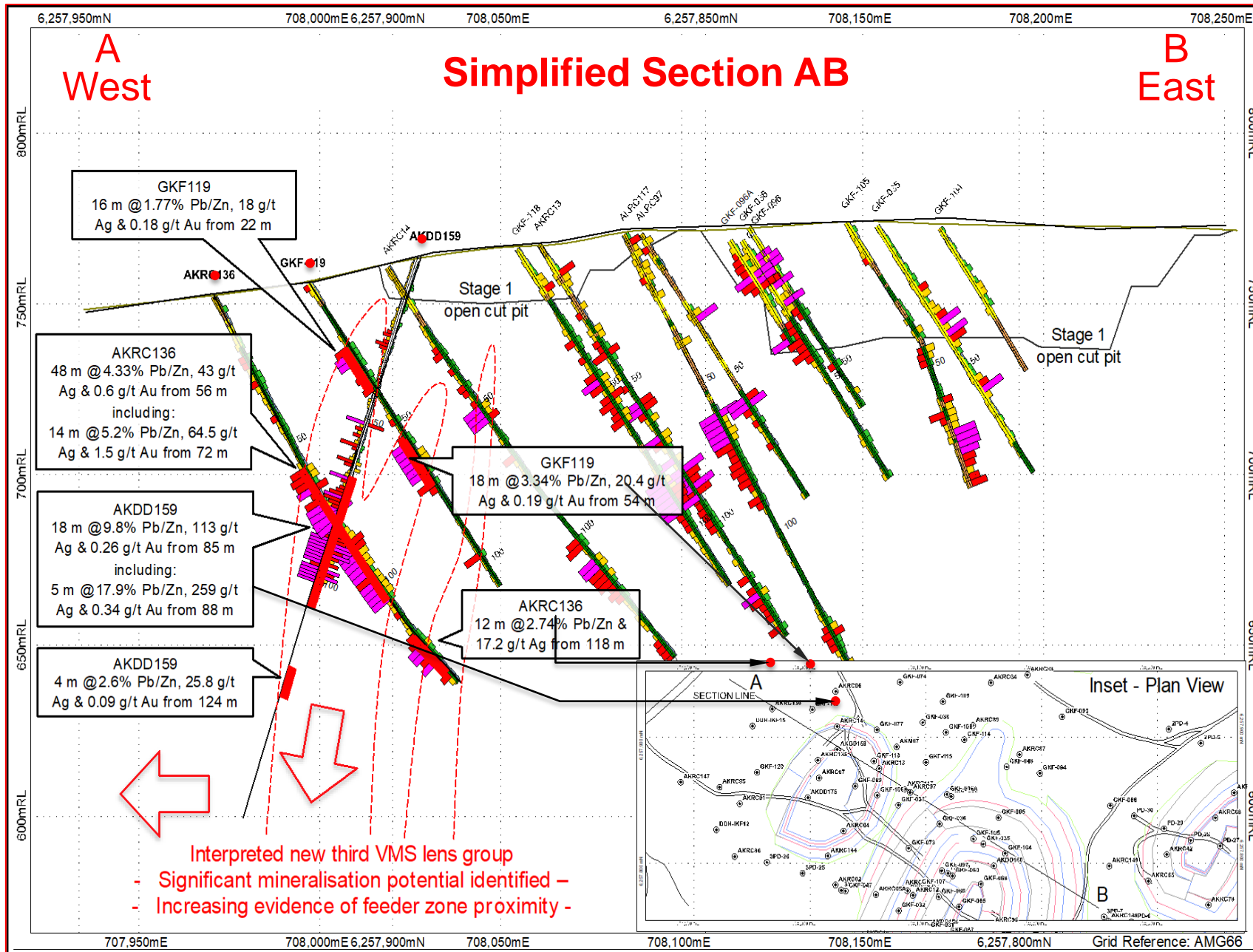
Increasing lead/zinc grade
trend to the West and at
depth



Competent Persons Statement

The information in this report that relates to Exploration Targets and Exploration Results is based on information compiled by Pedro Kastellorizos. Mr. Kastellorizos is the Managing Director & Chief Executive Officer of Argent Minerals Limited is a Member of the AusIMM of whom have sufficient experience relevant to the styles of mineralisation under consideration and to the activity being reported to qualify as a Competent Person as defined in the 2012 Edition of the Australasian Code for Reporting of Exploration Results, Mineral Resources and Ore Reserves. Mr. Kastellorizos has verified the data disclosed in this release and consent to the inclusion in this release of the matters based on the information in the form and context in which it appears.

RICH INTERCEPTS NEW THIRD VMS LENS

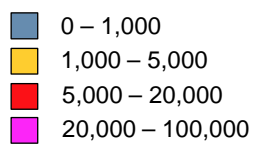


HISTOGRAM LEGEND

Base metals grade (Zn)

Histograms on left hand side of drillholes

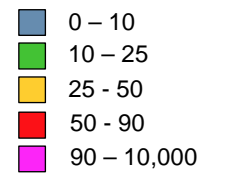
Base metals grade (ppm)



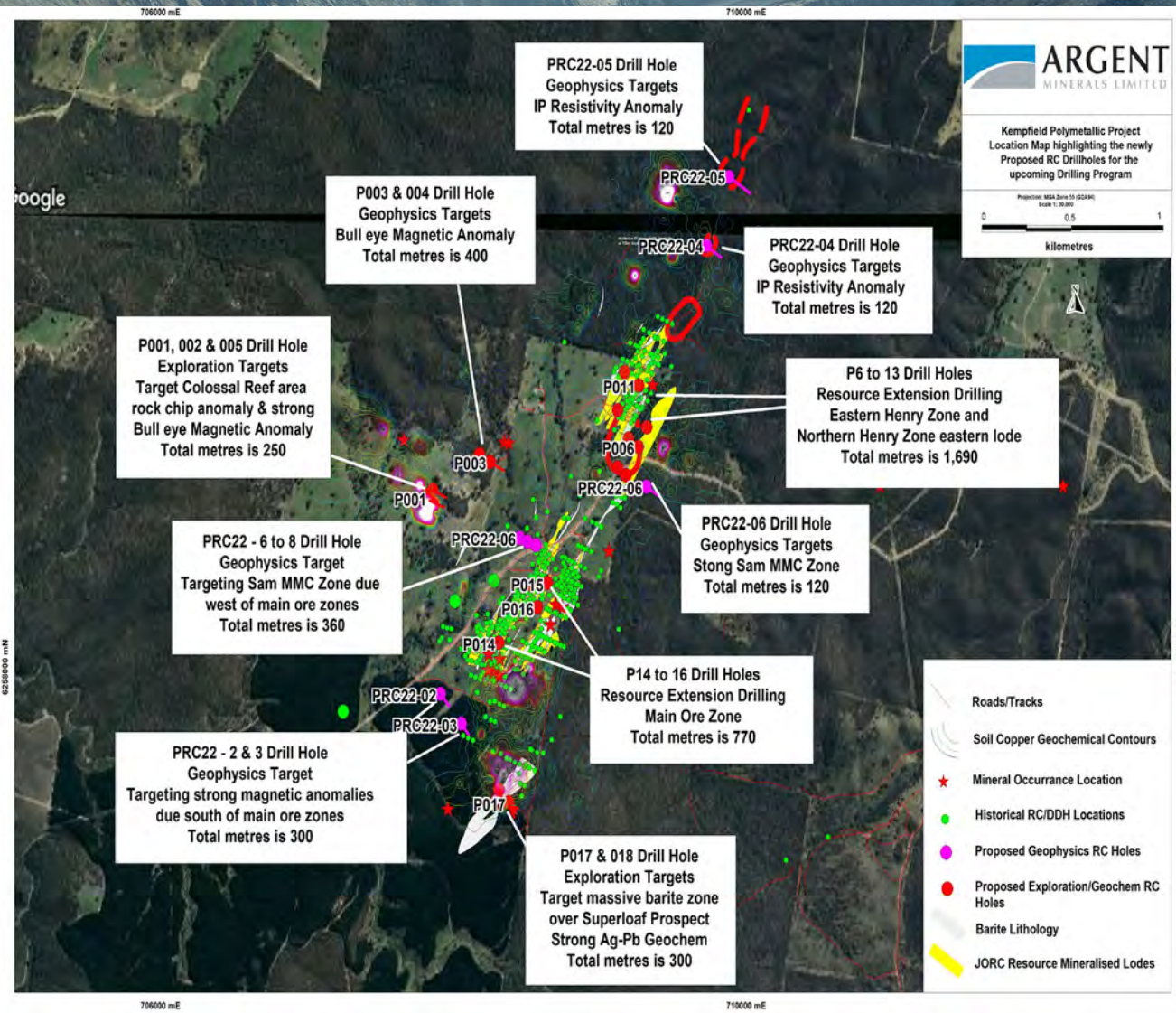
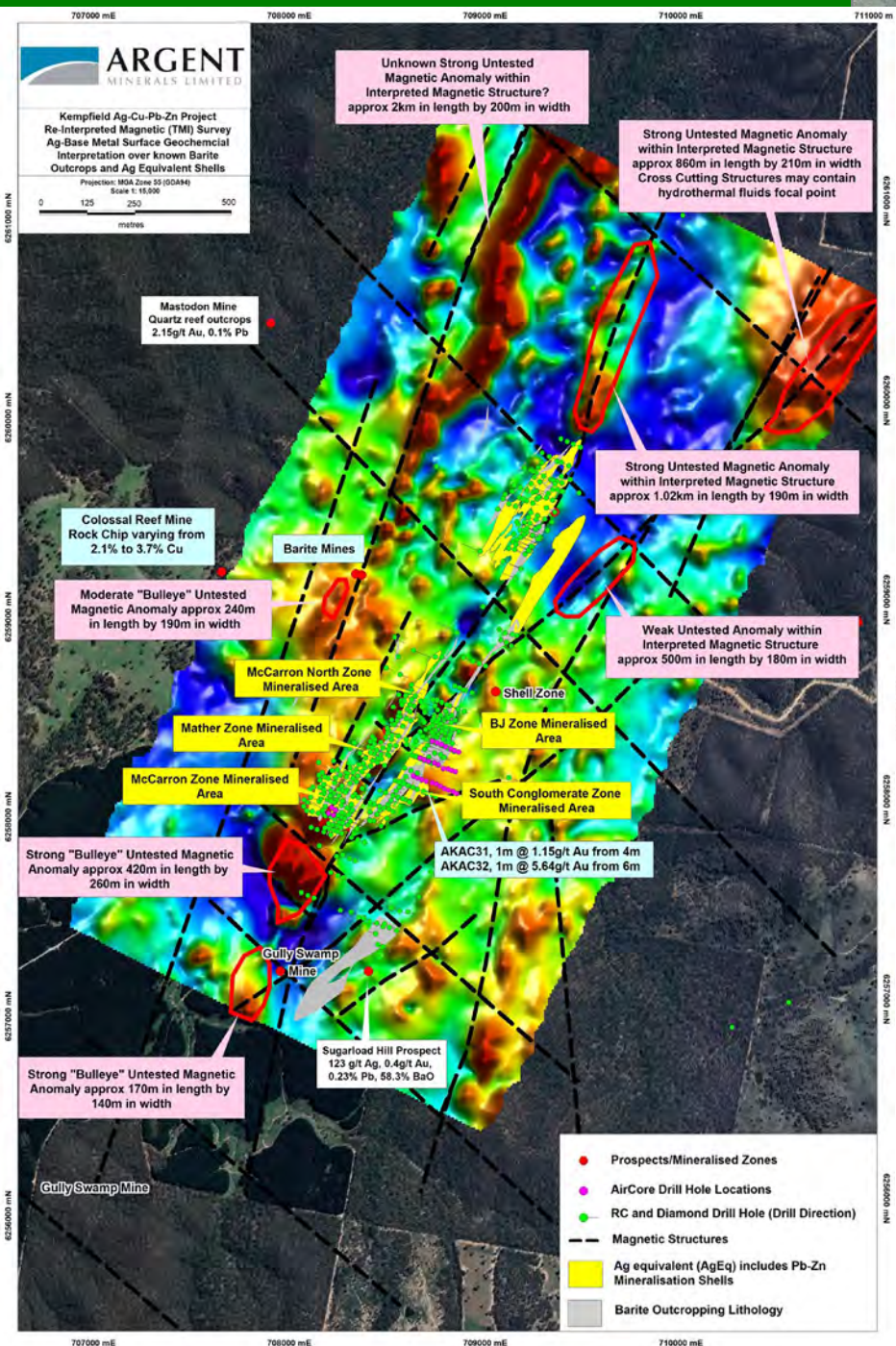
Precious metals grade (Ag)

Histograms on right hand side of drillholes

Ag Grade (ppm)



KEMPFIELD RESOURCE UNTESTED TARGETS



- Resource Drilling Program will include 3,000m
- Exploration/Geophysics Target Drilling will include over 2,000m

Copperhead 1st Reconnaissance Program

01

Ground Exploration Reconnaissance and Rock Chip Program will commence before December 2022 (approx. 100-200 samples).

Drilling Program over Kempfield

02

Resource and Geophysics RC Program targeting 3,000m will commence over Kempfield during the 1st Quarter 2023.

Further Ground Geochem & Airborne EM Survey

03

Further geochemical sampling programs and Airborne EM Survey will be flown over all the major copper prospects in order to define sulphide mineralisation at depth during the 1st Quarter 2023.

RC Drilling over Copperhead Project

04

RC drilling program over Copperhead Project targeting base metal and nickel-PGE mineralisation during the 2nd quarter 2023.

CONTACT US & THANK YOU

ASX:ARD



Level 2, 7 Havelock Street West Perth, WA 6005

Managing Director

Pedro Kastellorizos

Email

pedro@argentminerals.com.au

Telephone

0427 482 787



www.argentminerals.com.au

